

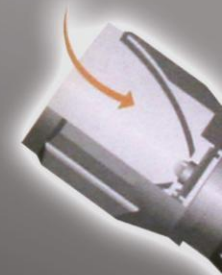


2700 PORT ROAD
COLUMBUS, OH 43217
PHONE: 1-800-837-8558
FAX: 614-497-5822

ALUMINUM

TrueSpot® Reflector:

- Precision spot
- Useful beam pattern



Trap Blister Packaging:

- Eliminates excess waste
- PET packaging
- 15% Package size reduction



Aluminum Series:

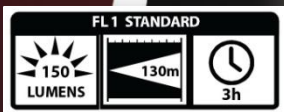
The 150 Lumen LED Battery Power Indicator Flashlight features Dorcy's exclusive TrueSpot® reflector technology. Providing world class brightness and an intense beam of light through a High Flux LED that produces 150 lumens of light output and projects a 130 meter beam distance.

The flashlight is constructed of aluminum alloy, and contains a polycarbonate lens making it extremely durable. The LED flashlight is o-ring sealed against dust and moisture making it weather resistant.

This flashlight has a tail cap push button switch with a battery power indicator light. The battery power indicator LED shines green to indicate greater than 20% battery power remaining, or shines red to indicate less than 20% battery power remaining.

The 150 Lumen LED Battery Power Indicator Flashlight comes complete with 3 AAA cell batteries, allowing for 3 hours of continuous use.

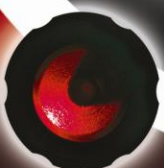
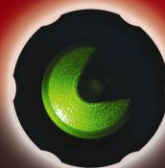
Tail Cap Push Button On / Off Switch



Aluminum Alloy Construction



41-4297



Greater Than 20% Battery Power Remaining

Less Than 20% Battery Power Remaining

Polycarbonate Lens

Tail Cap Switch:

- Durable Push Button Switch
- Battery Power Indicator



DORCY®

ALUMINUM



Dorcy Item No.	Description	UPC	Case Pack	Inner Pack	Case Wt.	Case Cube	Case Dimensions				
		035355-					L	x	W	x	H
41-4297	150 Lumen - 3AAA LED Battery Indicator Flashlight	44297-7	3	-	2.07	0.271	12.40	x	4.10	x	9.20



41-4297

Dorcy Item No.	Lumen Output	Beam Distance	Run Time	Weather Resistant	Battery Type	Batteries Required	Feature 1	Feature 2	Feature 3
41-4297	150 (L)	130 (m)	3 (h)	Weather Resistant	AAA	3 - Included	Aluminum Alloy Construction	Tail Cap Battery Indicator Switch	Battery Indicator - Green Greater than 20%; Red Less than 20% Battery Power