



First Mate II

Handheld Thermal Night Vision Cameras

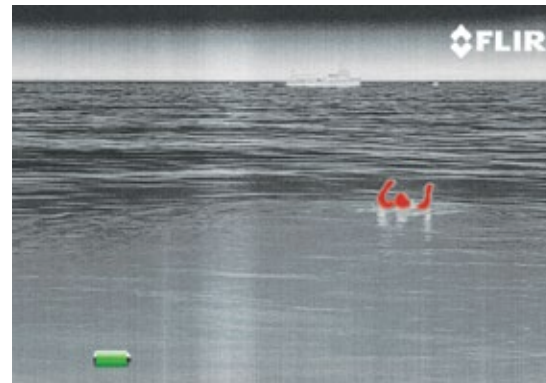
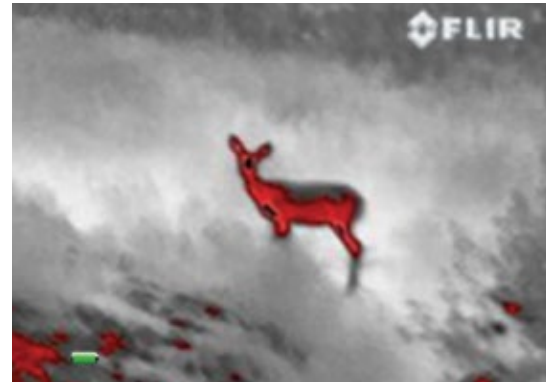


See at Night. Stay Safe.

More affordable. More features.

First Mate II thermal imaging cameras make pictures from heat, not light. So no matter how much light is available – from pitch black to moonlight to severe midday glare – thermal imagers display clear infrared video. In complete darkness, you can see other vessels, landmarks, rocks, buoys, floating debris and other obstacles.

First Mate II's new **InstAlert™** feature highlights the hottest objects in a scene in red. This is extremely valuable when you're trying to avoid hazards in your path or in crew overboard situations, when time is of the essence to save a life.



Seeing Red: First Mate II's new **InstAlert™** Detection

InstAlert™

First Mate II MS-Series

Ultra-compact yet loaded with features, First Mate II MS-Series literally fits in the palm of your hand. Choose from two models:

- MS-224 includes a 240 x 180 infrared detector and freeze frame functionality
- MS-324 includes a 320 x 240 infrared detector and 2x E-zoom
- Both have White Hot, Black Hot and InstAlert palettes

Learn more: www.FLIR.com/MS-Series

Detection Range Performance†

MS-224



MS-324



† = Actual object detection range performance may vary depending on camera setup, environmental conditions, and user experience. All specifications are subject to change without notice. Visit www.FLIR.com/Maritime for the most up-to-date specifications.



Detection Range Performance†

HM-324 XP+



First Mate II HM-Series

With the HM-Series, you get everything the MS-Series has to offer, plus the ability to store still images and video on an SD card.

- White Hot, Black Hot and InstAlert palettes
- 4 rechargeable AA NiMH batteries (also runs on Li-Ion and Alkaline)
- Video out through RCA Jack

Learn more: www.FLIR.com/HM-Series



HM-307 XP+ (7° Lens)



First Mate II BHM-Series

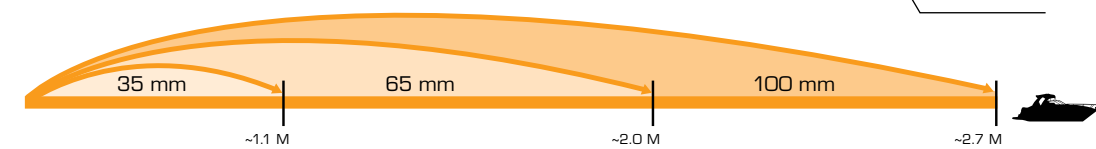
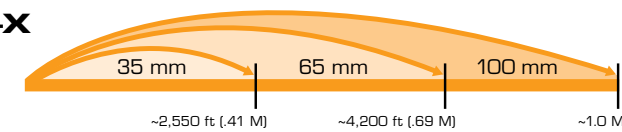
Bi-ocular comfort, long-range viewing capability, and the option of 640 x 480 resolution make First Mate II BHM-Series a valuable accessory to anyone who spends more time on the water than they do on land.

- White Hot, Black Hot and InstAlert palettes
- Lenses sold separately (choose from 35 mm, 65 mm or 100 mm)
- 4 rechargeable AA NiMH batteries (also runs on Li-Ion and Alkaline)

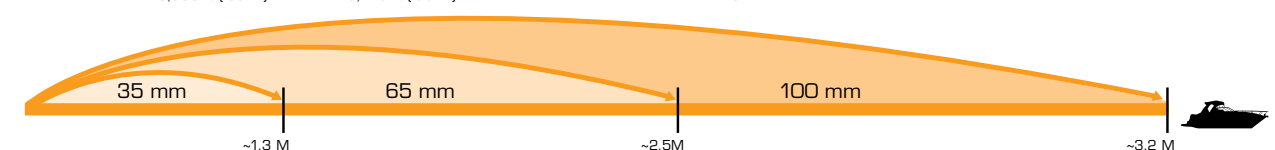
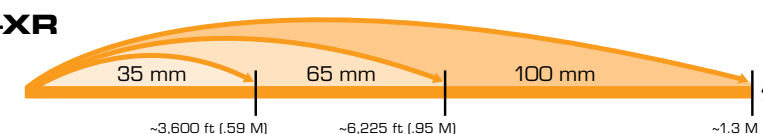
Learn more: www.FLIR.com/BHM-Series

Detection Range Performance†

BHM-X



BHM-XR





First Mate II

Specification	MS-Series (MS-224 & MS-324)	HM-Series (HM-224, HM-224 Pro, HM-324 XP+ & HM-307 XP+)	BHM-Series (BHM-X & BHM-XR)
Resolution	240 x 180 or 320 x 240	240 x 180 or 320 x 240	320 x 240 (X) or 640 x 480 (XR)
Field of View	24° x 18°	HM-224, HM-224 Pro & HM-324 XP+: 19 mm: 24° x 18° with optional 2x Extender: 12° x 9° HM-307 XP+: 65 mm: 7° x 5°	X: 35 mm: 13° x 10° 65 mm: 7° x 5° 100 mm: 5° x 3° XR: 35 mm: 18° x 14° 65 mm: 10° x 8° 100 mm: 6° x 4°
E-Zoom	MS-324: 2x	2x (not available on HM-224)	X: 2x; XR: 2x & 4x
Video Out	N/A	NTSC or PAL through RCA jack	NTSC or PAL through RCA jack
Data Storage	N/A	HM-224: N/A HM-224 Pro: Store still images on SD card HM-324 XP+ & HM-307 XP+: Store still images and video on SD card	Store still images and video on SD card
Battery Type/Operating Life Per Charge	Rechargeable Internal Li-Ion Battery/5-7 hours nominal	4 rechargeable AA batteries; NiMH (included), Li-Ion, or Alkaline/ >5 hours (NiMH)	4 rechargeable AA batteries; NiMH (included), Li-Ion, or Alkaline/ >5 hours (NiMH)
Operating Temperature	-4°F to 122°F (-20°C to 50°C)	HM-224 & HM-224 Pro: 32°F to 122°F (0°C to 50°) HM-324 XP+ & HM-307 XP+: -4°F to 140°F (-20°C to 60°C)	-4°F to 140°F (-20°C to 60°C)
Weight	12.9 oz.	HM-224, HM-224 Pro, HM-324 XP+: 1.45 lbs. HM-307 XP+: 2.2 lbs.	w/ 35 mm: 2.84 lbs. w/ 65 mm: 3.05 lbs. w/ 100 mm: 3.06 lbs.
Environmental Rating	IP-67	IP-67	IP-67 (camera body only)
Size (L x W x H)	6.70" x 2.31" x 2.44"	HM-224, HM-224 Pro, HM-324 XP+: 9.36" x 3.30" x 2.60" HM-307 XP+: 11" x 3.33" x 2.62"	w/ 35 mm: 10.5" x 6.5" x 2.6" w/ 65 mm: 11.5" x 6.5" x 2.6" w/ 100 mm: 13.0" x 6.5" x 2.6"
Warranty	2-Year Standard (free upgrade to 3-Year Extended after product registration)		

For complete specifications on each camera model, please visit: www.FLIR.com/Maritime



PORTLAND
Corporate Headquarters
FLIR Systems, Inc.
27700 SW Parkway Ave.
Wilsonville, OR 97070
USA
PH: +1 877.545.5094

NASDAQ: FLIR