

Ecofan[®]

HEAT POWERED STOVE FAN

Creates its own electricity!

Cuts fuel costs up to 18%

Increases your comfort faster

Runs silently



*Choose your
Colour*

www.ecofan.com

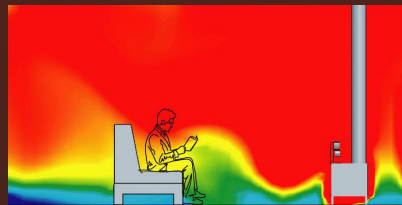


The Genuine Ecofan® Heat Powered Stove Fan

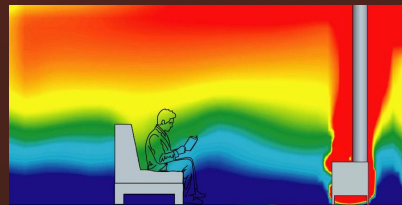
Ecofans circulate warm air throughout the room to increase your comfort. These fans are designed to sit on top of a free standing stove and create their own electricity without using household energy or batteries. Ecofans start automatically when placed on top of a stove and adjust their speed with the stove temperature. As the stove heats up, the Ecofan runs faster. As the stove cools down the fan slows and automatically shuts off. Ecofan designs have evolved from the original Canadian invention to the current models that provide greater efficiency and maximum airflow.

Up to 18% Fuel Savings!

Only the genuine Ecofan has been tested by representatives from the Faculty of Engineering at the University of Waterloo, the leading technical university in Canada. These tests have proven that using an Ecofan can reduce fuel usage up to 18%. This saving also translates into a reduction of particulate and carbon emissions. The use of an Ecofan not only saves you money, it helps the environment.



Heat displacement with an Ecofan®



Heat displacement without an Ecofan®

*Software simulation

How Ecofan® Works

Ecofans use thermoelectric generation to transform heat into electricity using the “Seebeck Effect”. The patented Ecofan design creates a hot and cold side on the module and when this occurs, electrons will flow within the module and electricity is generated to operate the fan!

Truly Unique

A genuine Ecofan makes an ideal gift for anyone looking for something truly unique that will provide years of enjoyment and added comfort. For 19 years this one of a kind fan has been satisfying home and cabin owners throughout the world.



810 UltraAir



812 AirMax



806 BelAir

For lower stove top temperatures

AIRFLOW	125 CFM	175 CFM	140 CFM
SINGLE BOX DIMENSIONS	8.7”(L) x 5.6”(W) x 10.9”(H)	10.5” (L) x 5.5” (W) x 12.5” (H)	10.5”(L) X 5.25”(W) x 12.5”(H)
WEIGHT	2.5 lbs.	3.8 lbs.	3.25 lbs.
OPERATING TEMPERATURE	100°C - 345°C 212°F - 650°F	85°C - 345°C 185°F - 650°F	75°C - 200°C 167°F - 392°F
MASTER CASE	4 UNITS	4 UNITS	4 UNITS
CASE DIMENSIONS	11.75”(L) x 11.5”(W) x 18.25”(H)	21.5”(L) x 11.5” (W) x 13.5” (H)	21.5”(L) x 11.5”(W) x 13.5”(H)
WEIGHT	11 lbs.	15 lbs.	15 lbs.
UPC CODE	Gold 810CA-BBX - 0 62503 81000 5 Nickel 810CA-KBK - 0 62503 81001 2 Black 810CA-XBX - 0 62503 81004 3	812AM-BBX - 0 62503 81204 7 812AM-KBK - 0 62503 81205 4 812AM-XBX - 0 62503 81217 7	806CA-BBX - 0 62503 80606 0 806CA-KBK - 0 62503 80607 7 806CA-XBX - 0 62503 80608 4