

**HDS<sup>®</sup>** 

20  
15

**LOWRANCE<sup>®</sup>**





Trolling

LOWRANCE

←	+	⊗
Mode	Spot-Lite	Prop
⬅	⏻	➡
Left	Standby	Right
-	↗	
Spot-Down	Set-Point	

Menu

High Chirp

HDS9

HDS12







7" HDS III

9" HDS III

12" HDS III

**HDS** III  
**NEW**

**NEW** Easier To Use – multi-touch and improved interface, faster processor. Today's Best Fishfinder Technologies Built In – CHIRP Sonar, StructureScan® HD, DownScan Imaging™, TrackBack™ | Connected Like No Other – NMEA 2000, Ethernet, Wireless, Bluetooth\*, World's best upgrade options | Broadband Radar™, SmartSteer® for Outboard Pilot and PinpointGPS, SonicHub®, engine connectivity, etc. | Most Mapping Options – The most compatible options in the market, Insight Genesis®, GoFreeShop downloads, chart sharing, dual-chart view, and many more proven Lowrance technologies. \*Coming this Spring

## PINPOINTgps

MotorGuide® and Lowrance® have brought their leading trolling motor, GPS navigation, and fishfinder/chartplotter technologies together to bring anglers a new level of functionality and boat control. This seamlessly integrated technology package is sure to open up exciting new fishing strategies for anglers everywhere. Anchor, Jog, Heading Lock, Route Record/Playback and Cruise Control can be operated from a compatible HDS® display. Plot a course or recall a route at the desired depth or structure. Pinpoint GPS Gateway Kit (8M0092085) available every where MotorGuide Xi5 trolling-motors are sold.

## OUTBOARDpilot\*

Everything you need in one box to fit an autopilot to your outboard motor. When connected to a compatible HDS® unit, the Outboard Pilot can steer to a waypoint or along a route, select a turn pattern or simply hold a constant heading.  
**Kits include:** Point-1 Heading and GPS Sensor, NAC-1 Autopilot Computer, PUMP-1 Hydraulic Pump – 0.8L reversible hydraulic pump or HELM-1 cable-steer helm drive unit, Standby-Auto button and Micro-C network components. \*Coming this Spring

- Outboard pilot hydraulic pack      **000-11748-001**
- Outboard pilot cablesteer pack      **000-11749-001**



# HDS<sup>®</sup>

FISHFINDERS / CHARTPLOTTERS

05 | 06

HDS<sup>®</sup> SERIES



1280x800 with Brilliant SolarMax™ Display



Dual micro-SD Card Slots



Upgradeable Software

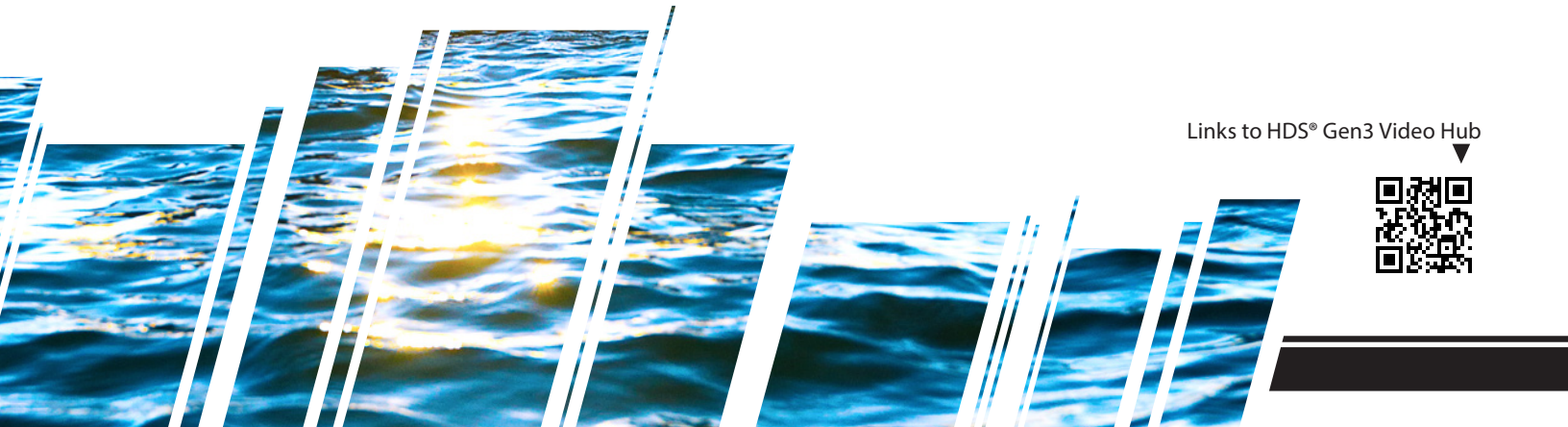


The **All-NEW**, Lowrance® High Definition System (HDS®) combines a brighter, multi-touch display and enhanced processor with leading-edge fishfinder technologies — including CHIRP Sonar, Broadband Sounder™, StructureScan® HD, DownScan Imaging™ and Trackback™ view — plus the latest advances in navigation and user interface — including internal 10Hz GPS, dual microSD-card slots, touch-plus-keypad operation and built-in wireless connectivity — all in one easy-to-use display.

Options ▶



Links to HDS® Gen3 Video Hub







**12"** **HDS III**  
Brilliant SolarMax™ Display



83/200 kHz/LSS/Insight	<b>000-11798-001</b>
50/200 kHz/Insight	<b>000-11796-001</b>
83/200 kHz/Insight	<b>000-11795-001</b>
Insight, No transducer	<b>000-11794-001</b>

**9"** **HDS III**  
Brilliant SolarMax™ Display



83/200 kHz/LSS/Insight	<b>000-11793-001</b>
50/200 kHz/Insight	<b>000-11791-001</b>
83/200 kHz/Insight	<b>000-11790-001</b>
Insight, No transducer	<b>000-11789-001</b>

**7"** **HDS III**  
Brilliant SolarMax™ Display



83/200 kHz/LSS/Insight	<b>000-11788-001</b>
50/200 kHz/Insight	<b>000-11786-001</b>
83/200 kHz/Insight	<b>000-11785-001</b>
Insight, No transducer	<b>000-11784-001</b>



# HDS<sup>®</sup> ADVANTAGES

## EASY TO SEE

LED-backlit, multi-touch, widescreen display

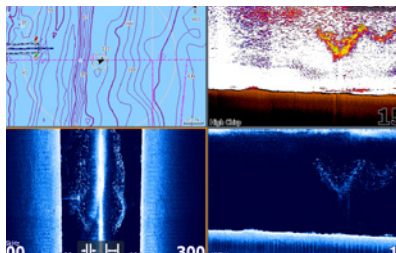
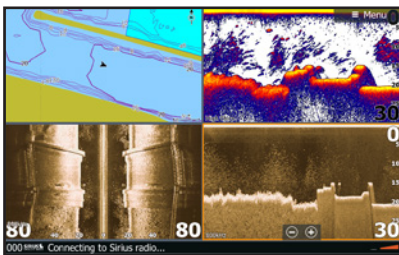
## EASE-OF-USE

Improved Lowrance<sup>®</sup> interface with multi-touch screen or full keypad control provides lightning-fast, fingertip access to all HDS<sup>®</sup> features.



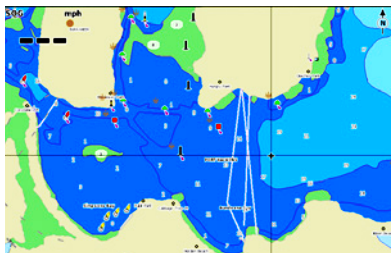
## MOST ADVANCED TECHNOLOGY

A revolutionary step forward in product design for Lowrance<sup>®</sup>. Wireless connectivity and Bluetooth. Today's best fishfinder technologies built in – CHIRP Sonar, StructureScan<sup>®</sup> HD, DownScan Imaging<sup>™</sup>, StructureMap<sup>™</sup> and TrackBack<sup>™</sup>



## FIND

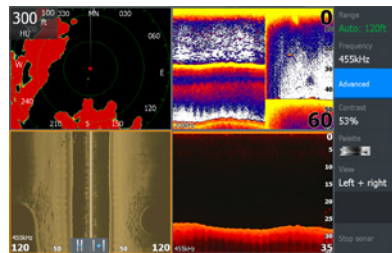
Unparalleled Lowrance<sup>®</sup> target separation and the industry's best view of fish holding near the bottom. View CHIRP Sonar and StructureScan<sup>®</sup> HD at the same time to get the best possible view of fish and structure. Widest CHIRP transducer selection — Hi/Med/Lo frequency ranges, or dual frequency transducers for multiple CHIRP ranges.



## NAVIGATE

10 Hz, internal GPS antenna. Built-in Insight USA<sup>®</sup> or Navionics<sup>®</sup> cartography, with real-time StructureMap<sup>™</sup> overlay capability. Compatible with Insight HD<sup>™</sup>, Navionics Platinum+ and Freshest Data, and Fishing Hotspots PRO<sup>®</sup> and C-MAP.

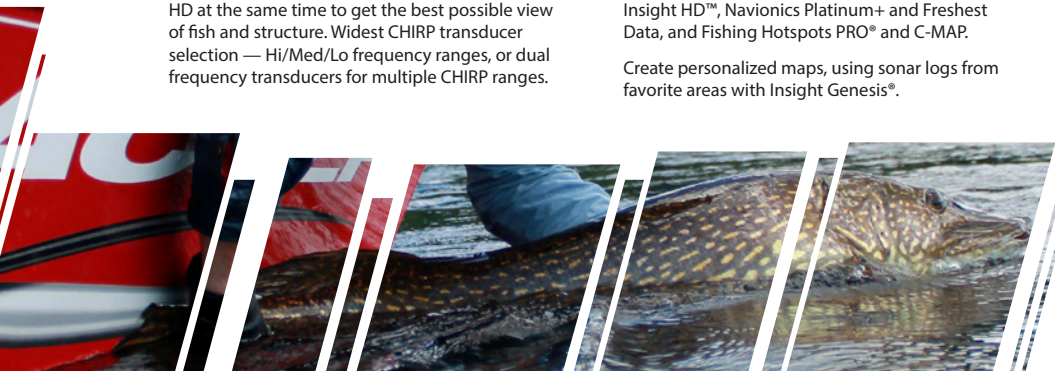
Create personalized maps, using sonar logs from favorite areas with Insight Genesis<sup>®</sup>.



## DOMINATE

Full boat integration and system control. Manage entire electronics system on boat including any NMEA 2000<sup>®</sup> certified device, other HDS<sup>®</sup> displays, engine interfacing and a complete line of Lowrance<sup>®</sup> data sensors from fuel flow to GPS.

Easy-to-install Ethernet connects and shares sonar, radar, charts and navigation data across multiple HDS<sup>®</sup> displays. Plus, video input on all three sizes of HDS<sup>®</sup> Gen3 for underwater or night-vision cameras.





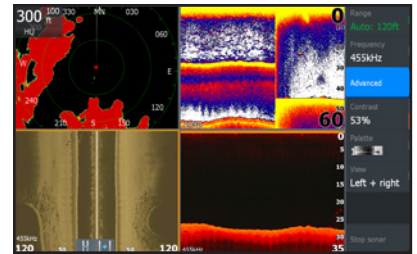
## MORE IS BETTER

Plug-and-play compatibility with Lowrance® performance modules — Broadband Radar™, SonicHub® Marine Audio, SiriusXM® Marine Weather and audio, Class B AIS and DSC VHF — as well as industry-leading technologies, such as SmartSteer® control for MotorGuide PinpointGPS and the Lowrance® Outboard Pilot.



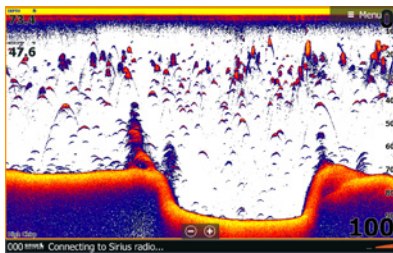
## QUICK ADJUSTMENTS

With an enhanced, faster processor and intuitive user-interface features — including scrolling menus, cursor assist, snap-to setting markers and innovative preview panes with quick-touch slider bars.



## STAYING CONNECTED

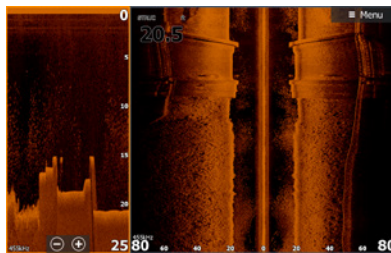
GoFree™ cloud enabled integrated wireless connectivity. Use the Lowrance® GoFree™ Control and Shop Apps to view and control select HDS® Gen3 displays wirelessly using supported tablets and smartphones. And, to download / upload maps and new software.



### CHIRP SONAR

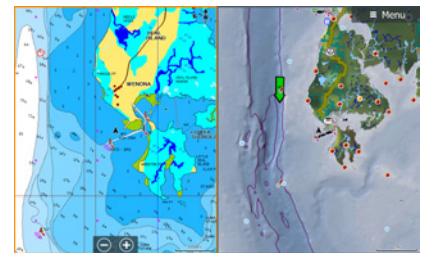
Built-in CHIRP Broadband Sounder™ adds CHIRP ranges: 40-60, 85-145, 130-210kHz (transducer dependent) for improved target separation and screen clarity. CHIRP provides better target separation and a clearer sonar screen over our already industry best Broadband Sonar.

The No. 1 advantage of Lowrance® CHIRP sonar is in detecting individual targets when they are holding close to the bottom or to structure.



### STRUCTURESCAN™ HD OPTIONS

True Left/Right/DownScan Imaging™ the only sonar-imaging solution with dedicated side- and down-looking views for the best possible picture around and below your boat.



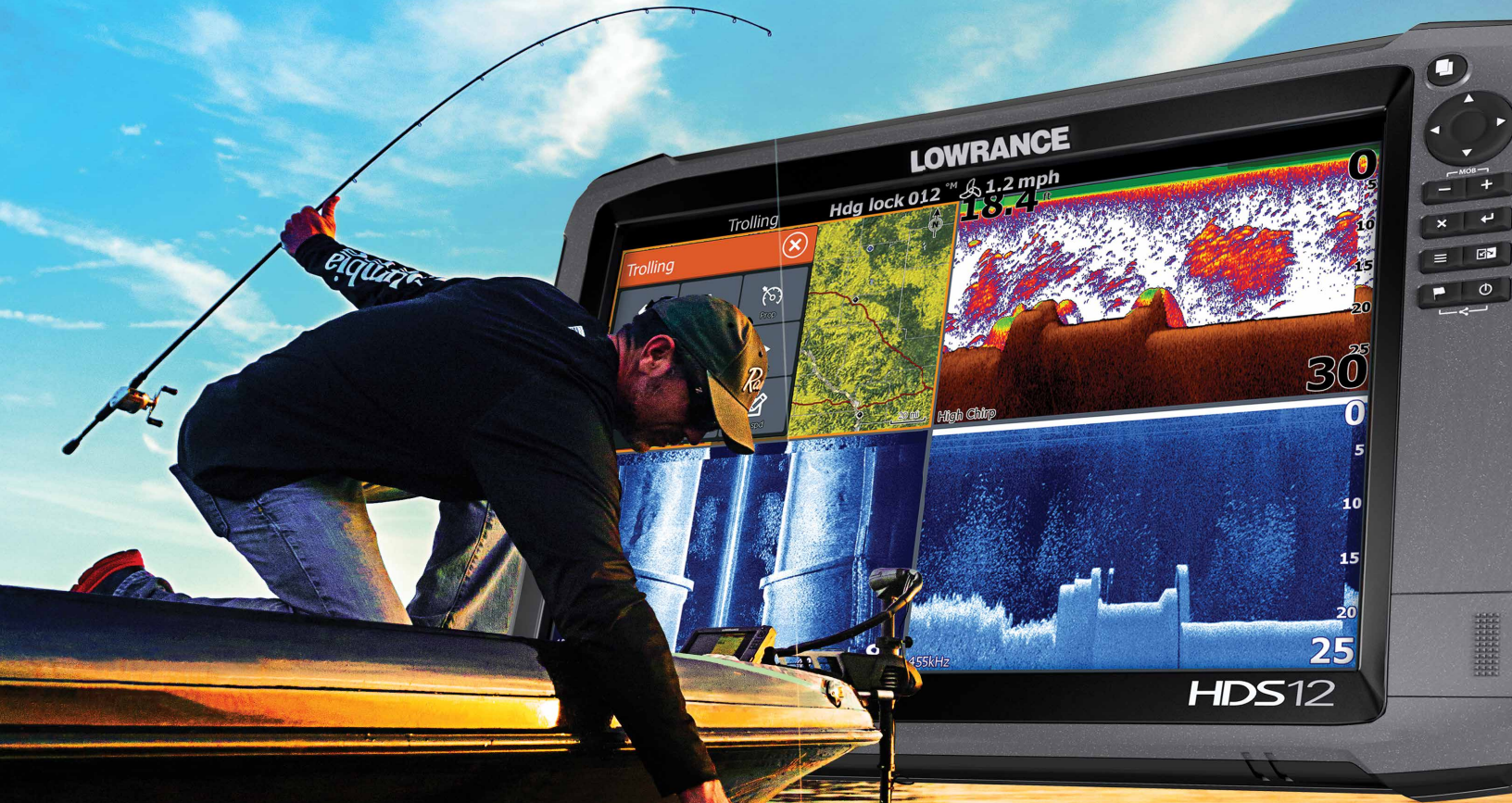
### MULTI-VIEW/ CHART SHARING

View Lowrance® and Navionics® mapping data simultaneously. Or, any combination of compatible third party mapping products. Lowrance® Ethernet enables chart sharing that shares maps across network of HDS® Gen3 units, saving high cost of additional chart-cards.



# HDS<sup>®</sup> III

FOR ANGLERS WHO WANT IT ALL



A unique combination of professional-level features plus easy-to-use operation makes the new HDS III Series of fishfinders/chartplotters both exclusive and yet somehow effortless.

**See it. Believe it.**

- Superior Lowrance<sup>®</sup> target separation
- Visibly better screens
- Obviously faster interface
- Full boat integration and system control

The next generation has arrived. To see how Lowrance Gen3 can make you a better angler visit [lowrance.com/wantitall](http://lowrance.com/wantitall).

COMING TO A DEALER NEAR YOU III

**GO FREE**

Download and upload maps, software, and apps direct to your fishfinder / chartplotter.

**FIND. NAVIGATE.  
DOMINATE.**

**LOWRANCE**  
WWW.LOWRANCE.COM