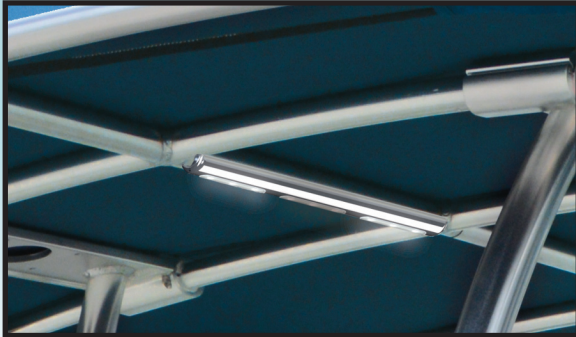


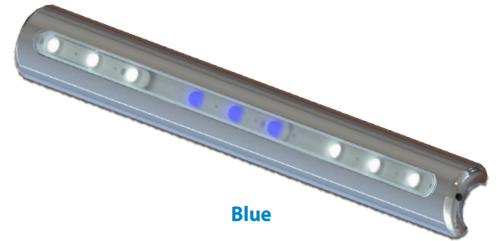
LED T-TOP LIGHT



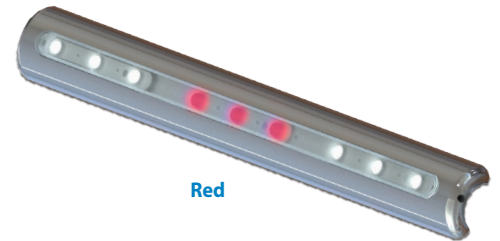
Unique, low profile LED deck light designed to fit 1" IPS pipe (1.315" OD). Ideal for t-tops, towers, railings.

FEATURES AND BENEFITS

- 7.2 Watt
- Compact design bolts directly to 1" IPS pipe
- Powerful 1080 lumen output with 90° spread
- Powerful 540 lumen output when red/blue light running
- 12-24 volt applications
- Very low power consumption (1.8 amps @ 12V)
- 8' hidden power cable
- Able to switch from white lights to blue or to red light



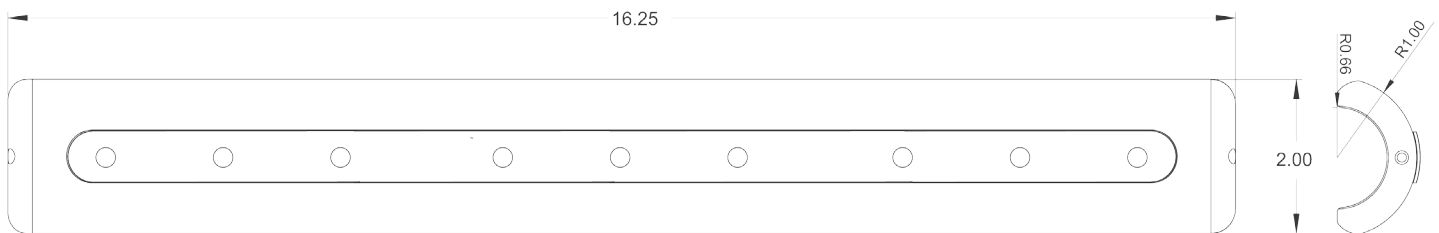
Blue



Red

MATERIAL CHARACTERISTICS

- Bright dip anodized Aluminum housing
- LED chips are silicone potted for IP67 Waterproof



All dimensions are shown in inches



Part #	Description	LED Color	UPC	Unit of Measure	Std. Pk.
F38-9600BXZ-B-1	LED T-Top Light for Pipe	White to Blue	630838084226	Each	6
F38-9600BXZ-R-1	LED T-Top Light for Pipe	White to Red	630838084233	Each	6