

# WOODS/RAINY VERSION 4

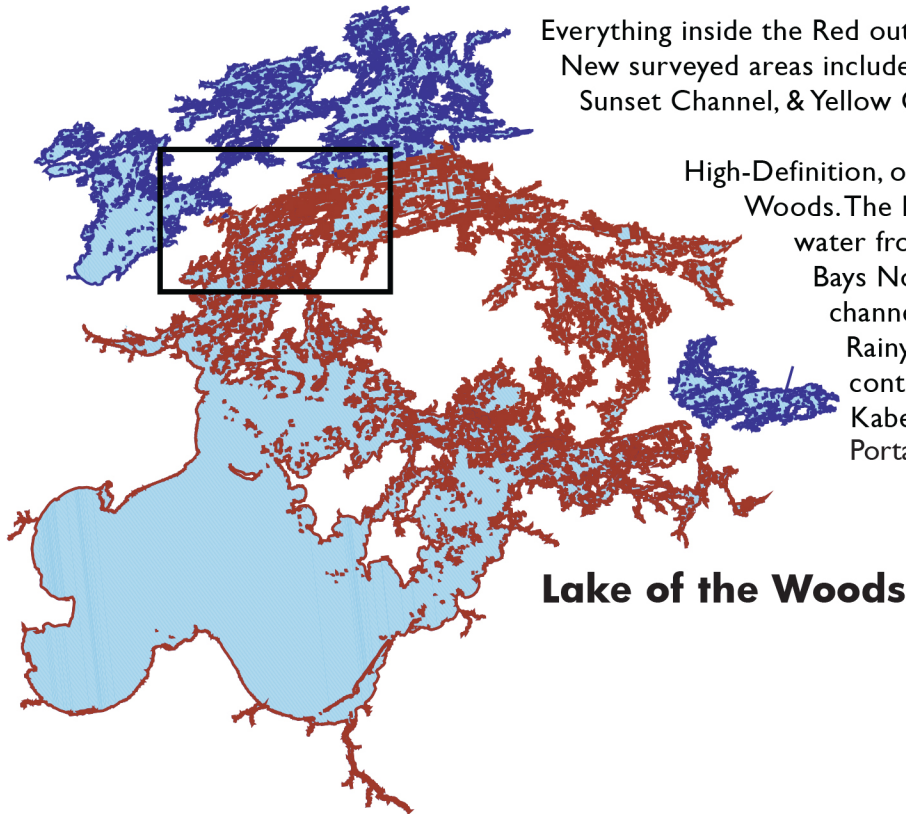
HUMMINBIRD® COMPATIBLE SD CARD COVERAGE



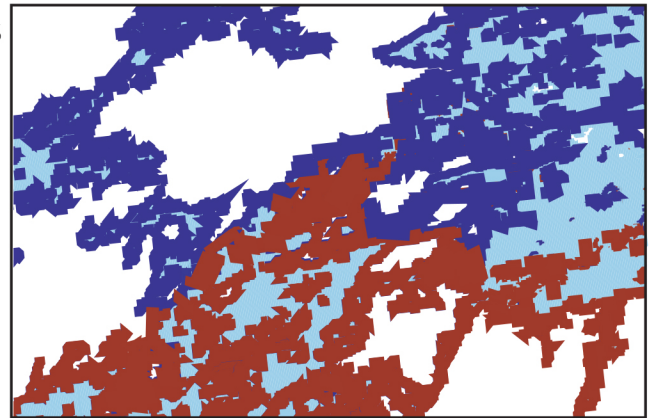
Everything inside the Red outline will display High-Definition, one-foot contours. New surveyed areas include Blueberry Inlet, Deadbroke Channel, Long Bay, Sunset Channel, & Yellow Girl Bay. Also includes detailed roads and base map.

High-Definition, one-foot Contours for nearly all of Lake of the Woods. The High-Definition detail covers all U.S. and Canadian water from Big Narrows through Big Traverse & Sabaskong Bays North to Sioux Narrows and west beyond Deadbroke channel (750,000 total surveyed acres). Rainy Lake & the Rainy River now including High-Definition, one-foot contours for Redgut & Rice Bay, all of Lakes Kabetogama, Namakan, Sand Point, and Crane. Portage Bay and Outer Bay not yet surveyed.

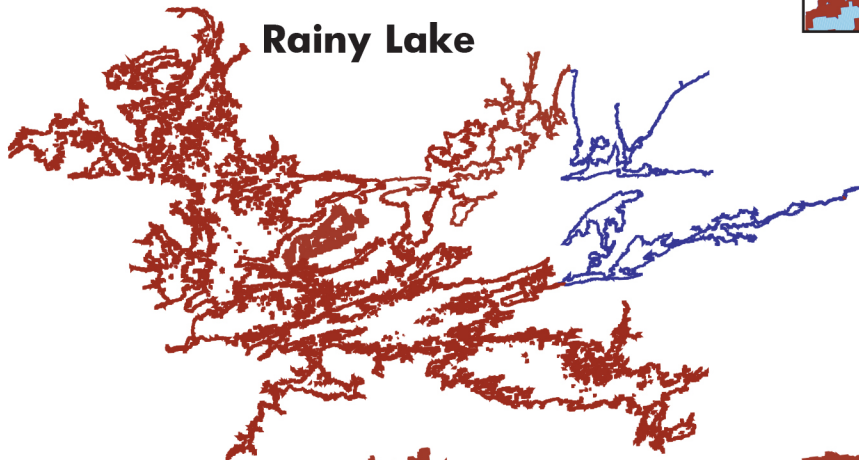
*Blue areas not surveyed, no contours.*



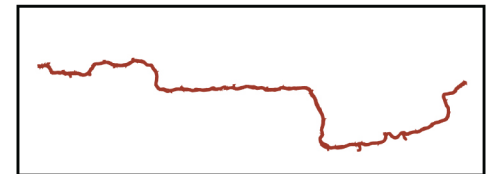
**Lake of the Woods**



**Inset- Big Narrows**



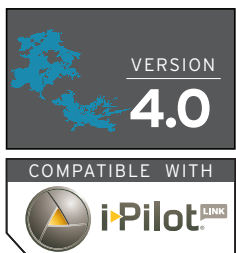
**Rainy Lake**



**Rainy River**



**Namakan Lake**



**Kabetogama Lake**

**Sand Point**

**Crane Lake**

This coverage map applies to the following LakeMaster® Woods/Rainy HPWRC4 Chart

# Woods/Rainy Updated Surveys

*Updated water in yellow from version 3.*



**South East portion of Lake of the Woods**  
*Updated water in yellow.*  
**PAGE 2**  
*Note: The lake elevation at the time of survey was 1059 feet*