



# TOWER X MARINE SPEAKER SYSTEM

Enclosed two-way marine audio tower speaker with 1" (25mm) horn loaded compression tweeter



## Engineered for the ultimate sound experience.

The JBL Tower X Marine Speaker system is ready to take your next outdoor adventure to the next level. The fully marinated speakers deliver a JBL pro sound experience complete with RGB lighting to bring it to life. Their rigid Polypropylene long-throw woofer cones deliver great bass to ensure you never miss a beat, coupled with a titanium horn-loaded compression tweeter and fidelity for accurate reproduction. The woofer and tweeter assembly incorporates a patent pending design that helps to project the sound over the stern of the boat, directly to the wave rider's sweet spot, while providing great sound inside the boat.

## Features

- ▶ Patent Pending Design
- ▶ Marine Rated
- ▶ High Output Design
- ▶ Multi-color RGB Lighting
- ▶ 360-degree Bracket Design
- ▶ Individually Voiced
- ▶ Harman Standard Reliability Testing
- ▶ JBL Industrial Design



# TOWER X MARINE SPEAKER SYSTEM

Enclosed two-way marine audio tower speaker with 1" (25mm) horn loaded compression tweeter

## Features and Benefits

### Patent Pending Design

JBL Tower X Marine Speakers include a patent pending angled face speaker design that points the speakers at the rider's listening position instead of the water at the back of the boat. This provides the rider with excellent sound quality, reduces the smearing effect caused by your music reflecting off the water, and an enjoyable listening experience for everyone else inside the boat.

### Marine Rated

For JBL, failure is not an option. Extreme care was taken to engineer marine-grade materials & components that overcome the demands of harsh marine environments. We will not rest until we are sure your product will survive for years to come.

### High Output Design

At JBL, we want to bring your concert to the water. The JBL Tower X includes long-throw polypropylene woofer cone and rubber surround, coupled with a 1-inch horn-loaded titanium compression tweeter to make sure you get the deep bass, smooth highs, superior sound quality and extreme power handling you expect.

### Multi-color RGB Lighting

JBL Tower X speakers come standard with multi-color RGB LED lighting engineered to withstand the harshest environment and keep the party going all night long. Hard-wire directly to the speaker to choose from one of seven color options out of the box, or connect to your existing RGB lighting control system to operate seamlessly with your existing RGB components.

### 360-degree Bracket Design

JBL Tower X Marine Speakers feature a rugged 360-degree rotating bracket design adjustable to 1.75in. to 3in. bar sizes. An added bonus is the ability to thread your wiring directly from the bar through the bottom bracket and into the speaker enclosure to limit exposed wiring and allow for a clean install.

### Individually Voiced

For many brands, off-the-shelf speakers and a cursory approval of frequency response curves are good enough. That's not the case with JBL. We don't only listen to our speakers against the competition – we voice them against each other to ensure each line has the consistent JBL sound signature that's known and sought out by those who care about their audio. This is just part of an extensive development process undertaken by some of the best transducer engineers in the world to provide the finest listening experience at any price point.

### Harman Standard Reliability Testing

JBL speakers have to undergo a testing process that would destroy lesser speakers. JBL freezes them, bakes them, shakes them, and drives them at full power for days at a time. In the case of our marine speakers, we add an intense salt spray and UV test to ensure that they provide years of enjoyment without missing a beat.

### JBL Industrial Design

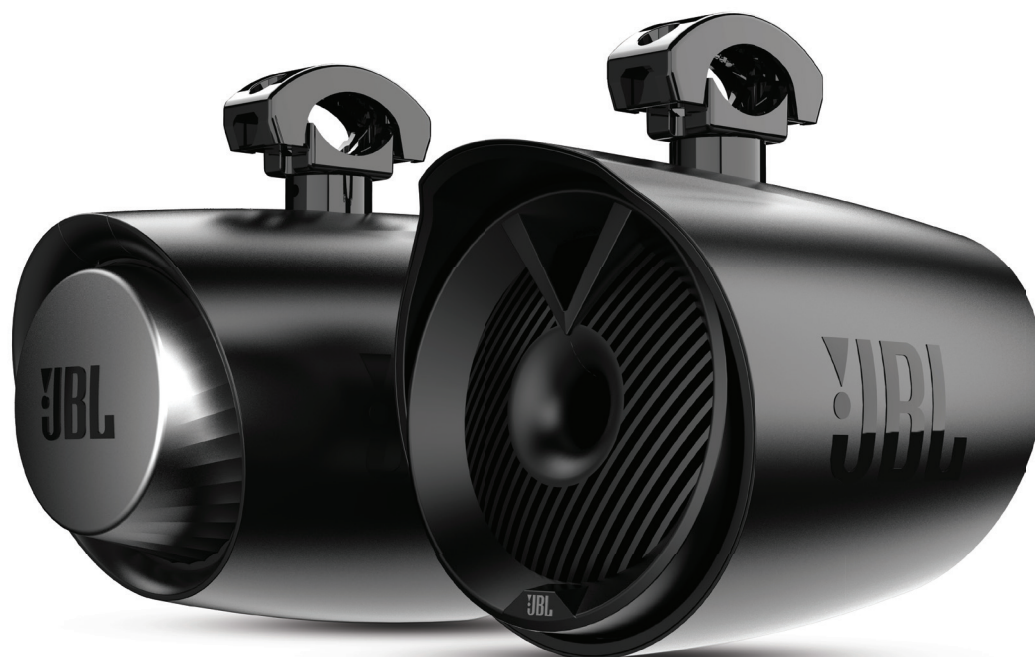
At JBL, we take pride in our iconic design heritage. Our design team took great care to ensure that your JBL Tower X Marine Speakers will look great on your boat. The smooth curve of the enclosure body, angular grille face design with embedded JBL horn logo, and "jet engine" component at the rear of the enclosure all tie together with our classic, current and future design language while concentrating on the design of your boat.





# TOWER X MARINE SPEAKER SYSTEM

Enclosed two-way marine audio tower speaker with 1" (25mm) horn loaded compression tweeter



## What's in the Box

- 2x Enclosed speaker assembly
- 2x Two-piece bracket assembly
- 4x Rubber pad
- Mounting hardware:
  - 2x hex head screws, 2x M6 bolts,
  - 4x M8 x 35mm bolts, 4x M8 x 55mm bolts,
  - 4x Flat washers, 4x Lock-washers,
  - 2x M8 hex-keys, 2x M6 hex-keys
- 2x RGB lighting cable
- 2x Security cable
- 2x Neoprene cover
- 2x JBL sticker
- Quick Start Guide

## Technical Specifications

### Tower X Marine MT6HLB

- Power Handling: 100Wrms, 300W peak
- Sensitivity (@ 2.83V): 90dB
- Frequency Response: 50Hz – 20kHz
- Voice Coil Diameter: 1.5in. (38.5mm)
- Impedance: 4 ohms
- Adjustable bar diameter from 1.75in – 3in. (44.5mm – 76.2mm)

### Tower X Marine MT8HLB

- Power Handling: 150Wrms, 450W peak
- Sensitivity (@ 2.83V): 92dB
- Frequency Response: 40Hz – 20kHz
- Voice Coil Diameter: 1.5in. (38.5mm)
- Impedance: 4 ohms
- Adjustable bar diameter from 1.75in – 3in. (44.5mm – 76.2mm)



HARMAN International Industries, Incorporated  
8500 Balboa Boulevard, Northridge, CA 91329 USA  
www.jbl.com

© 2019 HARMAN International Industries, Incorporated. All rights reserved. JBL is a trademark of HARMAN International Industries, Incorporated, registered in the United States and/or other countries. Features, specifications and appearance are subject to change without notice.