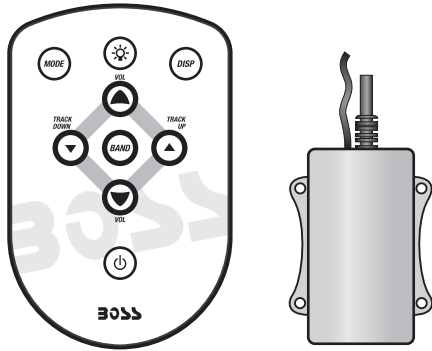


BOSS[®]
AUDIO SYSTEMS

MRF90

Floating, Water-Resistant
Radio Frequency Wireless Remote With White LED LIGHT



Compatible with MR2180UA, MR1650UA, MR1630UA

1. What's Included

1. RF Receiver  x 1 pcs

2. RF Remote Control  x 1 pcs

3. Long Lasting 3V Lithium Battery x 1 pcs

4. User Manual x 1 pcs

5. Weather-Resistant Plastic Remote Holder x 2 PCS

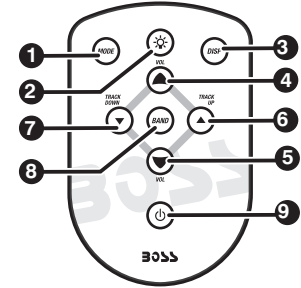
6. Weather-Resistant Self-Tapping Screws x 4 pcs




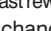

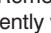
7. Double sided Mounting Tape x 2 pcs

8. Lanyard x 1 pcs



3. Key Functions



1. Press MODE button to change mode.
2. Press and hold Light () button to use the white LED light.
3. Press DISP button to view clock, and other available information.
4. Use Volume up () to raise the sound volume.
5. Use Volume down () to lower the sound volume.
6. Press () button to seek up/select the higher channel /track up in different modes. Or hold this button to tune up/fast channel up/fast forward, etc in different modes.
7. Press () button to seek down/select the lower channel /track down in different modes. Or hold this button to tune down/fast channel down/fast rewind, etc in different modes.
8. Press BAND button to change different band in the AM & FM mode(if available).
9. Press POWER() once to turn on or off the unit.

MRF90

Floating, Water-Resistant
Radio Frequency Wireless Remote With White LED LIGHT

03.2012

BOSS[®]
AUDIO SYSTEMS

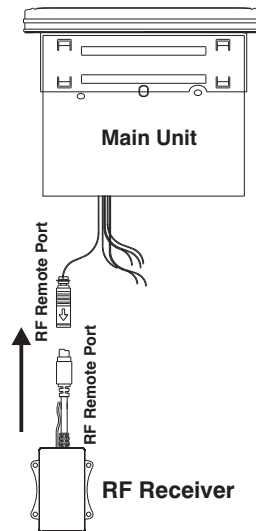
3451 Lunar Court • Oxnard, CA 93030
www.bosssaudio.com
800.999.1236

tech support: www.bosssaudio.com/support



2. Connecting the RF Receiver

Connect the MRF90 black box receiver to the RF remote port connector at the back of the unit securely. Make sure the pins are aligned properly when plugging in, and the connection is secure, use tape to secure the connection if needed. When installing the receiver do not put it in any metal shielding for better reception.



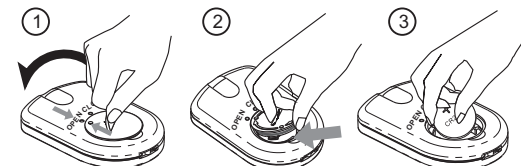
4. Installing/Replacing the Battery

1. On the back of the Remote, remove the battery like pictures below, gently with a coin.
2. Obtain one fully charged Cr2430. Be sure to install the new battery the same way as the old battery.
3. Install the battery cover back into place, being careful to align it with the rubber seal.

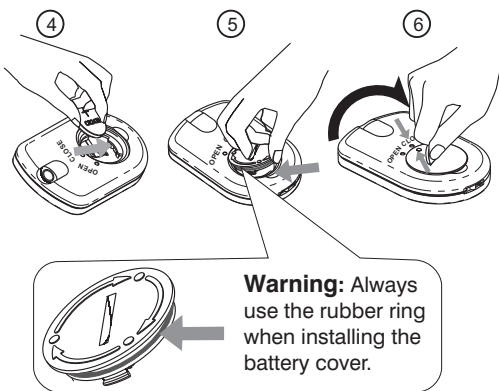
CR2430 Battery Specification (Coin Type Crimp-sealed, Primary Lithium Battery)

Nominal Capacity	280mAh	
Nominal Voltage	3V	
Standard Discharge Current	0.3mA	
Max. Discharge Current	Continuous	6mA
	Pulse	50mA
Temperature Range	-10°C ~ +60°C	
Weight	4.0g	
Dimensions	Height (H)	3.0mm
	Diameter(D)	24.5mm

Remove The Battery Out



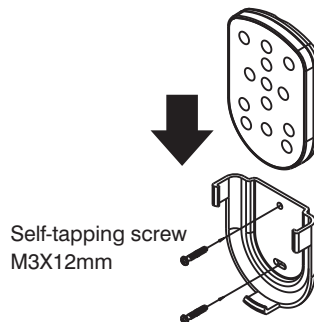
Installing/Replacing the Battery (continued)



7. Remote Cradle Mounting Instructions

There are 2 recommended mounting options:

1. If mounting the cradle on a wood surface, two self tapping stainless steel screws are included. Hold the cradle in place and proceed with the self tapping screws.
2. If mounting on the surface of a SPA, Boat or other fiberglass surface, we've included an adhesive strip that is resist to most SPA chemicals, saltwater and sunlight. Make sure the mounting surface is clean and dry. Then remove the adhesive proactive tape on both sides of the adhesive strip, and apply the strip to the fiberglass surface. You're now ready to mount the cradle. Simply press firmly for a few seconds and it's done. firmly for a few seconds and it's done.



5. How to pair Remotes

Each receiver can support up to 10 Remote Controls at the same time.

Method: Press and hold the DISP button for 5 seconds.

Note: If the receiver is already paired with 10 remotes successfully and you continue to pair new remotes, it will automatically un-pair with the the first remotes paired.

6. Specifications

Remote Control Power: 1 pcs CR2430 Battery

RF Range: Up to 20 Feet

Remote Control Dimensions (H x W x D): 86x 56x12 mm

RF Receiver Dimensions (H x W x D): 76x 42x17 mm

Note: Specifications are typical. Individual units may vary. Specifications are subject to change and improvement without notice.

Reminder: This unit uses 433.92MHz and may interfere with other RF transmissions near this frequency.