

LOWRANCE®



Elite-5 HDI Combo

Operation manual

Copyright © 2013 Navico

All rights reserved.

Lowrance® and Navico® are registered trademarks of Navico.

Fishing Hot Spots® is a registered trademark of Fishing Hot Spots Inc.

Navionics® is a registered trademark of Navionics, Inc.

Navico may find it necessary to change or end our policies, regulations and special offers at any time. We reserve the right to do so without notice. All features and specifications subject to change without notice.

Compliance Statements

Lowrance Elite-5 HDI

- meets the technical standards in accordance with Part 15.103 of the FCC rules
- complies with CE under RTTE directive 1999/5/EC
- complies with the requirements of level 2 devices of the Radiocommunications (Electromagnetic Compatibility) standard 2008

For more information please refer to our website: www.lowrance.com.

Warning

The user is cautioned that any changes or modifications not expressly approved by the party responsible for compliance could void the user's authority to operate the equipment. This equipment has been tested and found to comply with the limits for a Class B digital device, pursuant to Part 15 of the FCC rules. These limits are designed to provide reasonable protection against harmful interference in a residential installation. This equipment generates, uses and can radiate radio frequency energy and, if not installed and used in accordance with the instructions, may cause harmful interference to radio communications. However, there is no guarantee that the interference will not occur in a particular installation. If this equipment does cause harmful interference to radio or television reception, which can be determined by turning the equipment off and on, the user is encouraged to try to correct the interference by one or more of the following measures:

- Reorient or relocate the receiving antenna
- Increase the separation between the equipment and receiver
- Connect the equipment into an outlet on a circuit different from that of the receiver
- Consult the dealer or an experienced technician for help










WARNING: When a GPS unit is used in a vehicle, the vehicle operator is solely responsible for operating the vehicle in a safe manner. Vehicle operators must maintain full surveillance of all pertinent driving or boating conditions at all times. An accident or collision resulting in damage to property, personal injury or death could occur if the operator of a GPS-equipped vehicle fails to pay full attention to travel conditions and vehicle operation while the vehicle is in motion.

Table of contents

Introduction.....	4	Fishing Modes	9
Unit Controls.....	4	Cursor.....	10
Inserting microSD cards	5	Goto cursor.....	10
Basic Operation.....	6	Advanced Mode	11
Setup wizard.....	6	Standby mode	11
Pages	6	Restore defaults	11
Selecting Pages.....	6	Pages	12
Page menus	6	Steer Page.....	12
Accessing the Settings menu	7	Sonar Page.....	12
Accessing menu items.....	8	DownScan page	13
Working with menus	8	Chart Page	13
Dialogs.....	8	Combo pages	14
Entering text	9	Overlay Data.....	15

DownScan Operation	17	Waypoints, Routes, Trails	32
Trackback	17	Routes Screen.....	34
Ping Speed	19	Trails Screen	38
DownScan options.....	20	Orientation	40
Sonar Operation	22	Overlay Data.....	40
Trackback	22	Settings.....	40
Sensitivity	24	Chart Settings.....	41
Colorline	24	Navigation Settings	42
Range	24	Settings	44
Frequency	25	Settings menu.....	44
Ping Speed	25	System.....	44
Fish ID	27	Saving Screenshots.....	46
Sonar Settings	28	Alarms	46
Installation	30	Specifications	48
Chart Operation	31	Index	49

Introduction

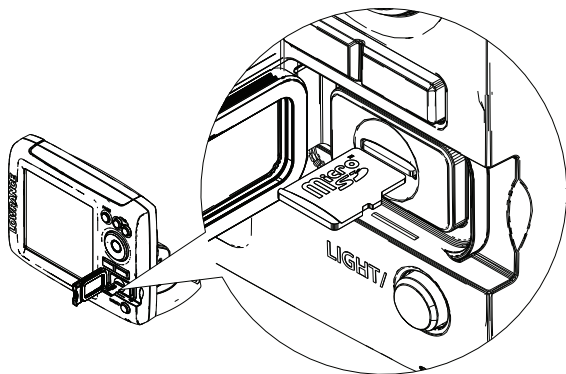
Unit Controls	
	LIGHT/POWER: controls backlight level and turns unit on/off
	KEYPAD: controls cursor & selects items on menus
	PAGES: allows you to select a page to view
	MENU: opens settings, context and page menus
	ENTER: finalizes menu selections; save waypoint at cursor position
	MOB: press and hold both Zoom keys to create a Man Overboard waypoint
	ZOOM KEYS: (+) used to zoom in; (-) used to zoom out
microSD slot: insert a blank microSD card to save screen captures, sonar logs, waypoints, routes and trails; or insert a microSD mapping card to use mapping data	

Getting Started	
Turn unit on/off	To turn on/off the unit, press and hold the LIGHT/POWER key for three seconds.
Man Overboard waypoint	Press the ZOOM IN and ZOOM OUT keys at the same time to set a Man Overboard waypoint. Your system will automatically create an active route back to the MOB waypoint. You must cancel navigation to terminate the function.
Adjusting the backlight	This unit has 11 backlight levels. Press the LIGHT/POWER key to switch backlight levels.
Muting Audio	Select <i>Audio</i> from the System menu. Select <i>Mute</i> and press ENTER .
Selecting a GPS source	Select <i>GPS</i> from the System settings menu. Press MENU , select <i>GPS source</i> and choose the desired source.

Inserting microSD cards

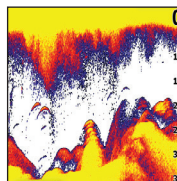
Carefully slide the microSD card into the slot until it clicks into place.

To remove, carefully push in the card until it clicks out of place.

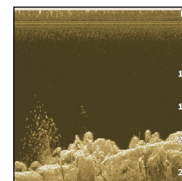


Conventional sonar and DownScan

This unit supports two types of sonar: Conventional and DownScan.



Conventional



DownScan

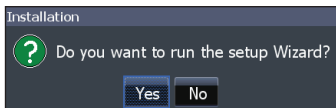
Refer to the “Sonar Operation” section for information about conventional sonar features and settings.

DownScan features and settings are covered in the “DownScan Operation” section.

Basic Operation

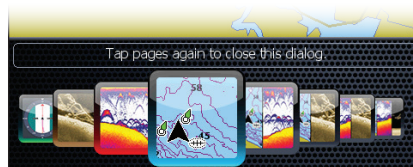
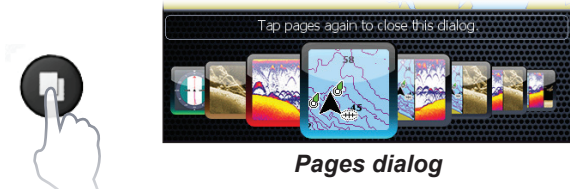
Setup wizard

The Setup wizard will appear when the unit is turned on for the first time. To choose your own settings, do not run the setup wizard. To restart the Setup wizard, restore defaults.



Pages

This unit has eight pages: Steer, DownScan, Sonar, Chart, Chart/Sonar, Chart/DownScan, Sonar/DownScan and Chart/Sonar/DownScan.



Selecting Pages

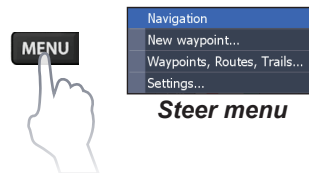
To select a page, press the keypad in the direction of the desired page and press **ENTER**.

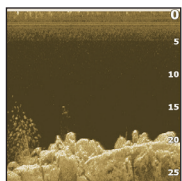
Page menus

The Steer, DownScan, Sonar and Chart pages have menus that can only be accessed when those pages are displayed.

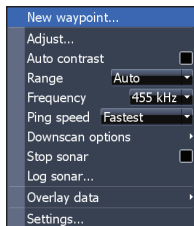


Steer page

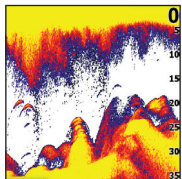




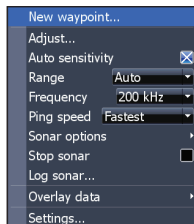
DownScan page



DownScan menu



Sonar page



Sonar menu

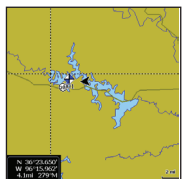


Chart page

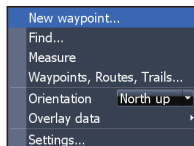
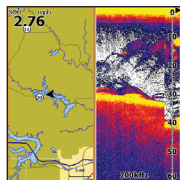
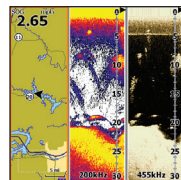


Chart menu

Combo pages



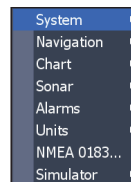
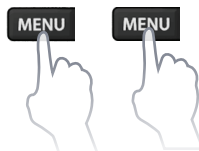
Two-panel page



Three-panel page

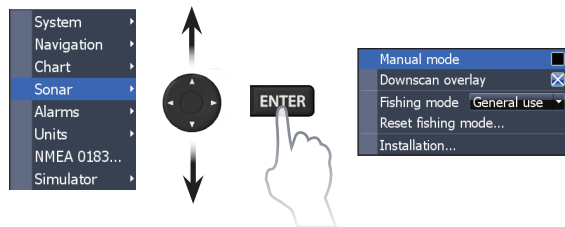
Press the **PAGES** key twice to switch active panels. The page menu for the active page will be displayed when the **MENU** key is pressed.

Accessing the Settings menu



Accessing menu items

The keypad and **ENTER** key are used to select menu items and open submenus. Use the keypad to highlight the desired item and press **ENTER**.



Working with menus

There are several menu types used to make adjustments to options and settings, including scrollbars, on/off features and dropdown menus.

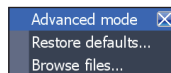
Scrollbars

Select the scrollbar and press the keypad left (decrease) or right (increase).



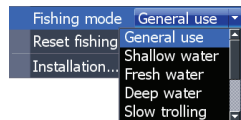
On/Off features

Select an on/off menu item and press **ENTER** to turn it on/off.



Dropdown menus

Access the dropdown menu and press the keypad up/down to select the desired item and press **ENTER**.



NOTE: Press the **MENU** key to exit menus.

Dialogs

Dialogs are used for user input or for presenting information to the user. Depending on the type of entry, different methods are used to confirm, cancel or close the dialog.



Entering text

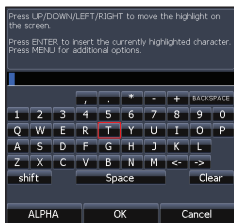
Some functions, like naming a waypoint, route or trail, will require you to input text.

To input text:

1. Use the keypad to select the desired character and press **ENTER**.
2. Repeat Step 1 for each character.
3. When entry is completed, highlight **OK** and press **ENTER**.

Switches letters to uppercase/
lowercase

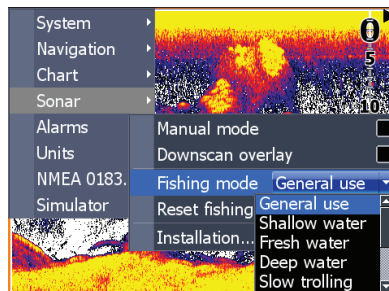
Switches keyboard between ALPHA and
QWERTY layout



Fishing Modes

(Conventional sonar only)

Fishing modes enhance the performance of your unit by providing preset packages of sonar settings geared to specific fishing conditions.



Fishing Mode Options		
General Use	1000ft or less	Coastal
Shallow Water	60ft or less	Shallow weedy bottoms
Fresh Water	400ft or less	Inland/Near coastal
Deep Water	1000ft or more	Offshore
Slow Trolling	400ft or less	Inland/Coastal
Fast Trolling	400ft or less	Inland/Coastal
Clear Water	400ft or less	Inland/Coastal
Brackish Water	400ft or less	Fresh-Saltwater mix
Ice	400ft or less	Ice fishing

Cursor

The keypad moves the cursor around the display, allowing you to scroll the map, select map items and review sonar history.

Press **MENU** and select *Return to vessel* or *Exit cursor mode* to clear the cursor.

Goto cursor

Used to navigate to the cursor.

1. Move the cursor to a desired location and press **MENU**.
2. Select *Goto cursor* and press **ENTER**.

Advanced Mode

Enables advanced features and settings.

The following features are enabled when Advanced mode is turned on:

- Navigation (Enables arrival radius, off-course distance and Bearings setting)
- Alarms (Enables arrival, off course and anchor alarm options)
- NMEA 0183 configuration options
- Units (Enables distance, speed, depth, temperature and bearings configuration options)

Standby mode

Lowers power consumption by turning off sonar and the display.

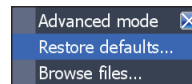
1. Press the **PWR/LIGHT** key to access the Backlight dialog.
2. Select *Standby* and press **ENTER**.
3. Press any key to resume normal operation.



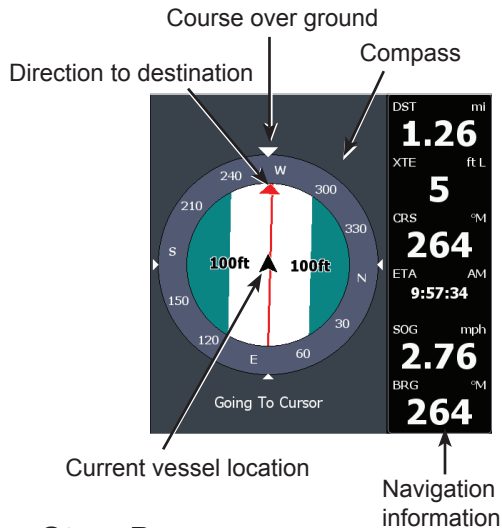
NOTE: *Leaving your unit in Standby mode when your boat is not in use will run down your battery.*

Restore defaults

Sets unit options and settings to default values.



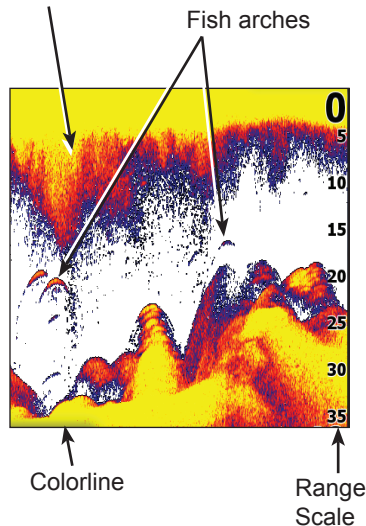
Pages



Steer Page

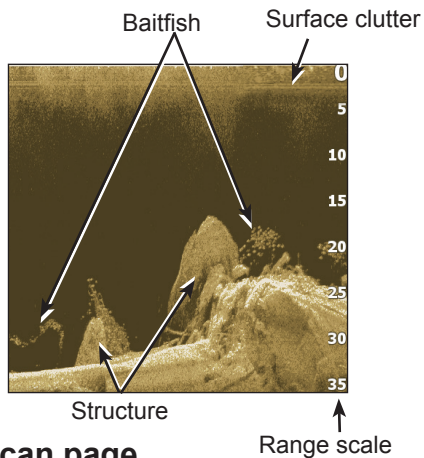
The Steer page has a compass that shows your current track, the direction to your destination, and a digital data navigation panel.

Surface Clutter



Sonar Page

Displays the water column moving from right to left on your unit's screen.



DownScan page

The DownScan page shows the water column moving from right to left. You can overlay DownScan sonar on the conventional sonar page by selecting *DownScan Overlay* on the Sonar settings menu.

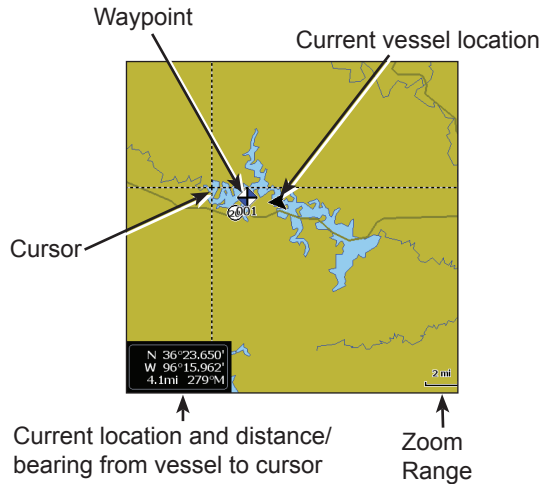
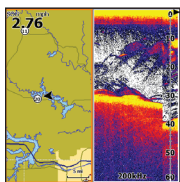


Chart Page

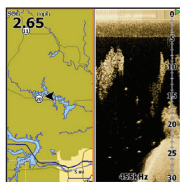
Consists of map that moves in real-time as you move. By default, the map is shown from a birds-eye view with North at the top of the screen.

Combo pages

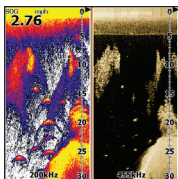
This unit has four pre-configured combo pages.



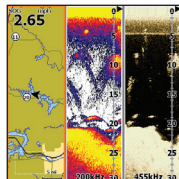
Chart/Sonar



Chart/DownScan



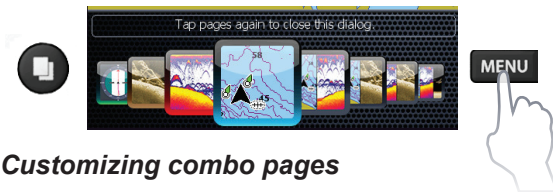
Sonar/DownScan



Chart/Sonar/DownScan

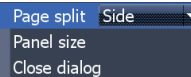


NOTE: Press the **PAGES** key twice to switch active panels.



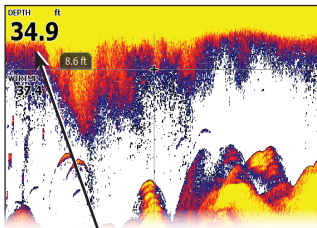
Customizing combo pages

You can adjust the panel size of combo pages and control how the pages will be arranged on the screen: vertically (side) or horizontally (over).



Overlay Data

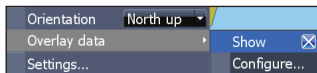
Used to select data shown on the Sonar, DownScan and Chart pages.



Overlay data

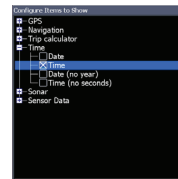
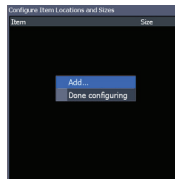
Show

Enables/disables the display of overlay data, allowing you to remove overlay data from the screen without deleting the current overlay data configuration.



Configure

Allows you to select/customize overlay data.



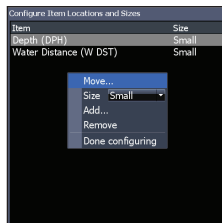
To add overlay data:

1. From the Sonar, Chart or DownScan page, press **MENU**.
2. Select *Overlay data* and press **ENTER**.
3. Select *Configure* and press **ENTER**.
4. Press *Menu* and select *Add*. Press **ENTER**.
5. Select a data category and press **ENTER**.
6. Select the desired data and press **ENTER**.
7. Repeat Steps 5 and 6 to add more data.
8. Press **MENU** and select *Return to Overlays*. Press **ENTER**.
9. Press **MENU**, select *Done Configuring* and press **ENTER**.

Customizing Overlay Data

You can add/remove data and adjust the size and position of overlay data on the screen.

Select the desired overlay data from the “Configure Item Locations and Sizes dialog” and press **MENU**. The configuration menu will appear.



DownScan Operation

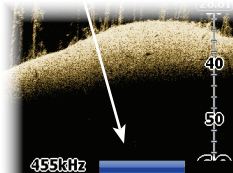
This unit supports two types of sonar: Conventional and DownScan.

The features described in this section are for DownScan sonar. Refer to the “Sonar operation” section for information on conventional sonar features.

Trackback

You can review your sonar history by pressing the keypad to the left until the screen starts to move in reverse and the sonar history bar appears at the bottom of the screen.

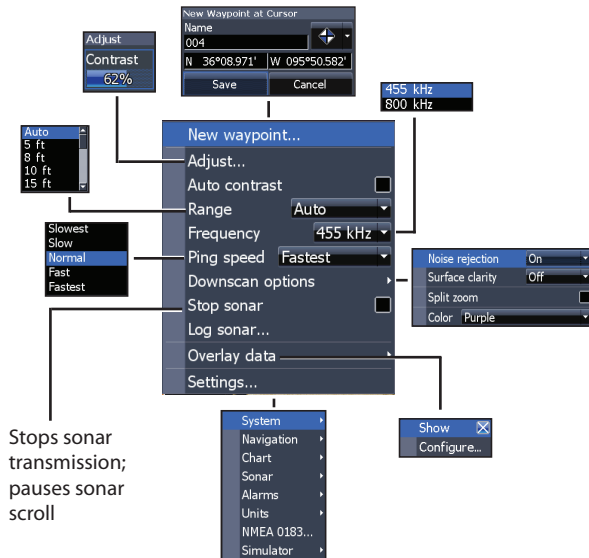
DownScan history bar



Move the sonar history bar all the way to the right to resume normal sonar scrolling, or press **MENU** and select *Exit cursor mode*.

DownScan menu

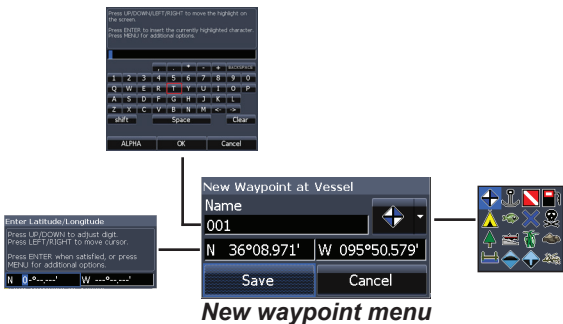
Press **MENU** from the DownScan page to view the DownScan menu.



Stops sonar transmission; pauses sonar scroll

New Waypoint

Places a waypoint at your current position or at the cursor position. From the new waypoint menu, you can input a waypoint name, select an icon and input a desired latitude/longitude.



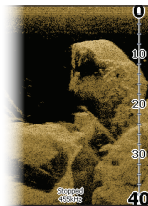
Adjust

Access the Adjust menu to make adjustments to the contrast level.

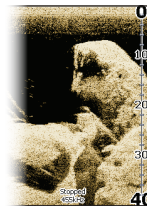


Contrast

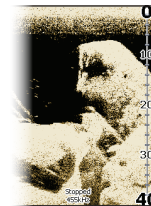
Adjusts the brightness ratio between light and dark areas on the screen, making it easier to distinguish suspended objects from the background.



Contrast set to 40%



Contrast set to 60%



Contrast set to 80%

DownScan units do not have a Sensitivity setting like traditional sonar units. Contrast functions as the sensitivity setting for DownScan units.

Auto Contrast

Automatically adjusts contrast settings to a level that works best with current water conditions.



NOTE: You can make limited adjustments to the contrast level with Auto Contrast turned on. You will have to turn it off to have access to all contrast levels.

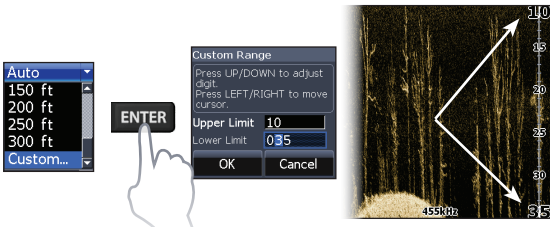
Range

Range settings display the section of the water column from the water surface to the selected depth range.



Custom Range — Upper and Lower Limits

Used to select the upper limit and lower limit of a section of the water column. That allows you to



view a section of the water column that does not include the water surface.

Upper and lower limits must be at least 5 ft (2m) apart.



NOTE: When using a custom range, you may not receive any digital depth readings, or you may receive incorrect depth information.

Frequency

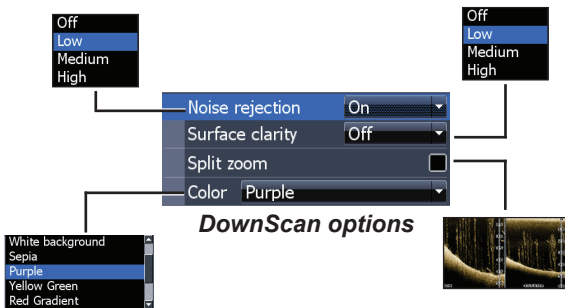
Controls the transducer frequency used by the unit. 800 kHz offers the best resolution, while 455 kHz has greater depth coverage.



Ping Speed

Controls the rate the transducer uses to send sonar waves into the water. Ping speed adjustments can help reduce interference from other transducers.

DownScan options

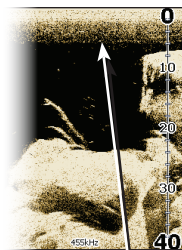


Noise Rejection

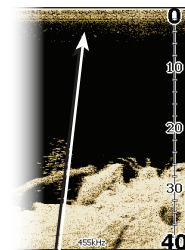
Uses advanced signal processing to monitor the effects noise (boat pumps, water conditions, engine ignition systems, etc.) has on your display, and then filters out undesired signals.

Surface Clarity

Surface Clarity reduces surface clutter by decreasing the sensitivity of the receiver near the surface.



Surface Clarity set to Low



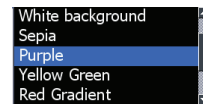
Surface Clarity set to High

Split Zoom

Changes the display to a split zoom view. You can select a 2X or 4X zoom level. Press the +/- keys to zoom in/ zoom out.

Color

Allows you to select a color palette best suited to your fishing conditions.



The white background palette works well for suspended targets. Purple is useful for viewing structure detail and determining bottom hardness. Sepia is best for looking at bottom detail.

Stop Sonar

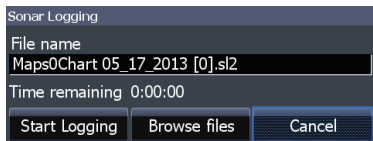
Stops sonar transmission and pauses the sonar chart, allowing you to get a better look at suspended targets and structure.



NOTE: *Sonar history (Trackback) will not be recorded when sonar is stopped.*

Logging Sonar

You can record sonar data and save the file on a microSD card inserted into the unit's card reader.

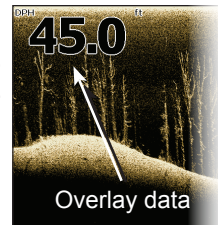


↓
View previously
saved sonar logs

Overlay Data

Allows you to select data to be displayed on top of the DownScan page.

Overlay data setup is covered in the "Pages" section.

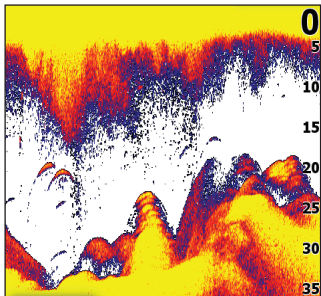


Settings

Accesses the Settings menu. Refer to "Sonar Settings" on page 27.

Sonar Operation

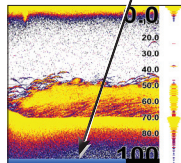
This unit supports two types of sonar: Conventional and DownScan.



The features described in this section are for conventional sonar.

Refer to the “DownScan operation” section for information on DownScan features.

Blue sonar history bar



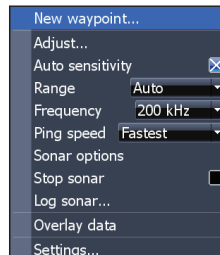
Trackback

You can review your recent sonar history by moving the cursor to the left until the screen starts to move in reverse.

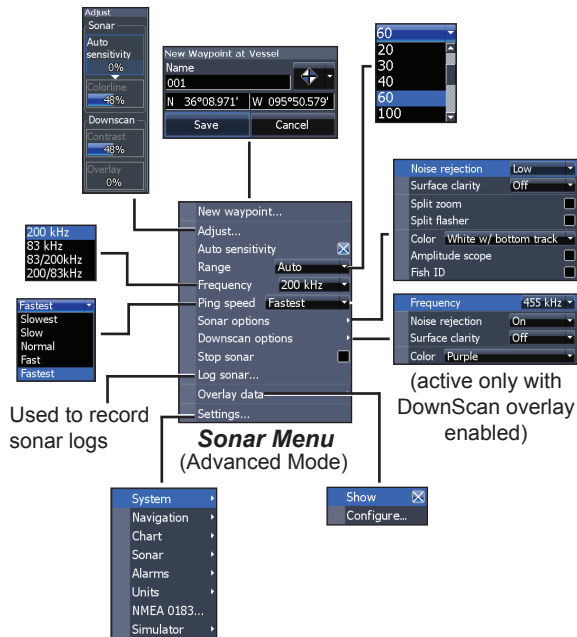
Move the sonar history bar all the way to the right to resume normal sonar scrolling, or press **MENU** and select *Exit cursor mode*.

Sonar Menu

Press **MENU** from any sonar page to access the Sonar menu.

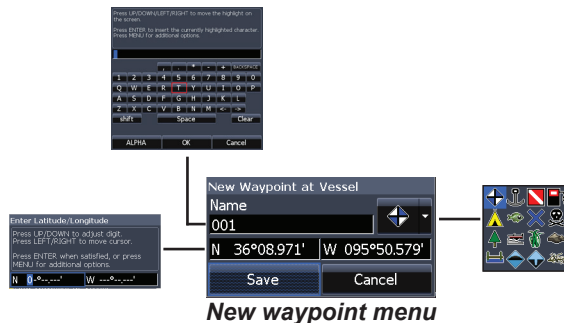


Shown with DownScan overlay enabled



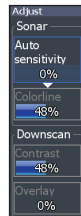
New Waypoint

Places a waypoint at your current position or at the cursor position. From the new waypoint menu, you can input a waypoint name, select an icon and input a desired latitude/longitude.



Adjust

You can make adjustments to Sensitivity and Colorline from the Adjust menu. Contrast and Overlay options will only be active on the Adjust menu with DownScan Overlay enabled.



Sensitivity

Controls the level of detail shown on the display. Too much detail will clutter the screen. If Sensitivity is set too low, desired echoes may not be displayed.



NOTE: You can make changes (+/-40%) to sensitivity with Auto Sensitivity turned on. You will have to turn it off to make significant adjustments.

Colorline

Separates strong sonar echoes from weak sonar echoes. That makes it easier for you to distinguish fish or structure from the bottom. A hard return will be shown as a wide, bright yellow area, whereas a soft return will be a narrow reddish-blue area.

Auto Sensitivity

Keeps sensitivity at a level that works well under most conditions, reducing the need for adjustments. Auto Sensitivity is turned on by default.

Range

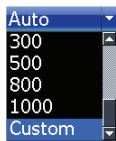
Selects the deepest range shown on the display. Range settings display the section of the water column from the water surface to the selected depth range.



If you select too shallow a depth range, the unit will not be able to lock onto the bottom.

Custom Range — Upper and Lower Limits

Used to select the upper limit and lower limit of a section of the water column. That allows you to view a section of the water column that does not include the water surface. Upper and lower limits must be at least 5 ft (2m) apart.



Custom range menu



NOTE: *When using a custom range, you may not receive any digital depth readings, or you may receive incorrect depth information.*

Frequency

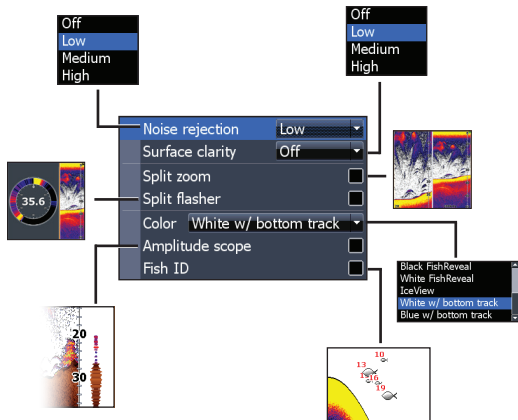
Controls the transducer frequency used by the unit. This unit supports three conventional three frequencies: 50kHz, 83kHz and 200kHz.

200 kHz has the highest sensitivity and best target discrimination in shallow water. 83 kHz offers a wider cone angle for more water coverage. 50 kHz provides the best depth penetration.

Ping Speed

Controls the rate the transducer uses to send sonar waves into the water. Ping speed adjustments can help reduce interference from other transducers. When using fishing modes, ping speed settings are optimized for the selected fishing conditions, so in most cases, adjustments are not necessary.

Sonar Options

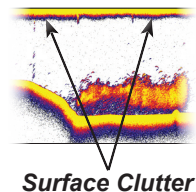


Noise Rejection

Uses advanced signal processing to monitor the effects noise (boat pumps, water conditions, engine ignition systems, etc.) has on your display, and then filters out undesired signals.

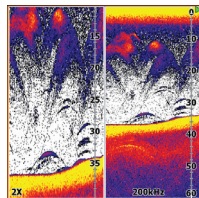
Surface Clarity

Surface Clarity reduces surface clutter by decreasing the sensitivity of the receiver near the surface.

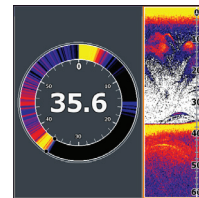


Split Zoom and Split Flasher

Switches the sonar display from full screen sonar to a split screen view.



Split Zoom



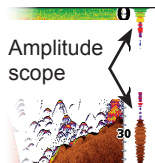
Split Flasher

Color

Allows you to change the look of the display using palettes with varying degrees of color/brightness.

Amplitude Scope

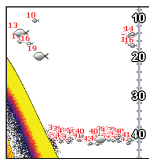
Displays the amplitude of the most recent echo.



Fish ID

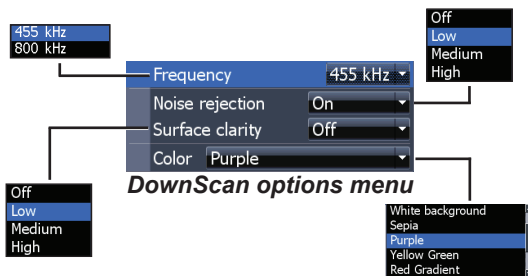
Displays fish echoes as fish symbols instead of fish arches.

Fish ID is not the most accurate method of fish detection since structure and suspended debris may be shown as a fish symbol on the display.



DownScan options

You can make adjustments to DownScan overlay settings from the sonar page. DownScan options are covered in more detail in the "DownScan Operation" section.



NOTE: *The DownScan options menu will only be available when DownScan overlay is enabled.*

Stop Sonar

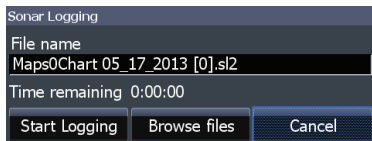
Pauses the unit's sonar, allowing you to get a closer look at suspended targets. Stop Sonar also can be used to prevent/stop interference between two sonar units running on the boat at the same time.



NOTE: *Sonar history will not be recorded when sonar is stopped.*

Logging Sonar

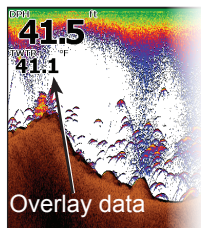
You can record sonar data and save the file on a microSD card inserted into the unit's card reader.



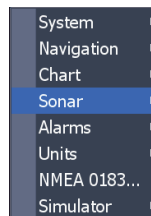
View previously saved sonar logs

Overlay Data

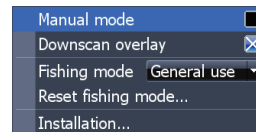
Allows you to select data to be displayed on top of the Sonar page. Overlay data setup is covered in the "Pages" section.



Sonar Settings



ENTER

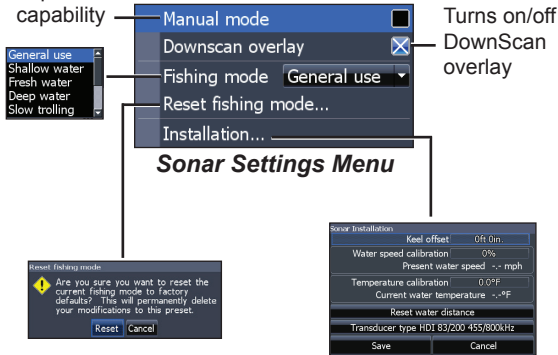


Conventional settings/DownScan Settings

You can adjust settings for both Conventional sonar and DownScan sonar modes from the Sonar Settings menu.

Only adjustments made to conventional sonar settings will be visible on the sonar page.

Restricts unit's digital depth search capability

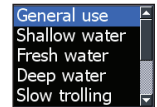


Sonar Settings Menu

When the unit is in manual mode, you may not receive any depth readings, or you may receive incorrect depth information.

Fishing Mode

Enhances the performance of your unit by providing preset packages of sonar settings geared to specific fishing conditions. For more information about fishing modes, refer to the “Basic Operation” section.



Manual Mode

Restricts digital depth capability, so the unit will only send sonar signals to the selected depth range. That allows the display to continue smooth scrolling if the bottom depth is out of transducer range.

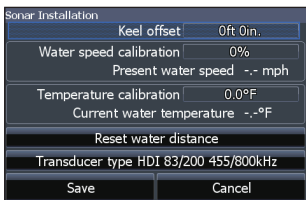


WARNING: Manual mode should only be used by advanced sonar users.

Reset Fishing Mode

Resets selected fishing mode to default settings. That is useful when you want to clear settings adjustments made while using a fishing mode.

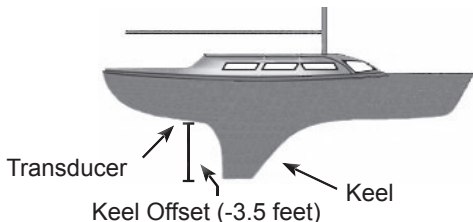
Installation



Installation menu

Keel Offset

All transducers measure water depth from the transducer to the bottom. As a result, water depth readings do not account for the distance from the transducer to the keel or from the transducer to the water surface. Before setting keel offset, measure the distance from the transducer to the lowest part



of the keel. If, for example, the keel is 3.5 feet below the transducer, it will be input as -3.5 feet.

Water speed calibration

Calibrates a paddlewheel speed sensor with speed data from a GPS source.

Temperature calibration

Calibrates data from the transducer temperature sensor with data from a known temperature source to ensure the accuracy of temperature information.

Reset water distance

Resets the Water Distance value to zero.

Transducer Type

Selects the transducer model attached to your unit. You must select the correct transducer type to get the best sonar performance from your unit.

Chart Operation

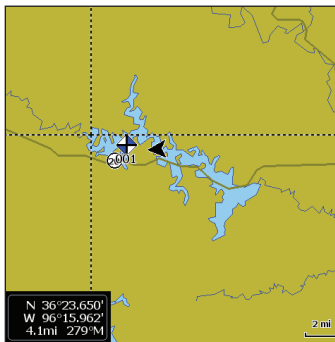
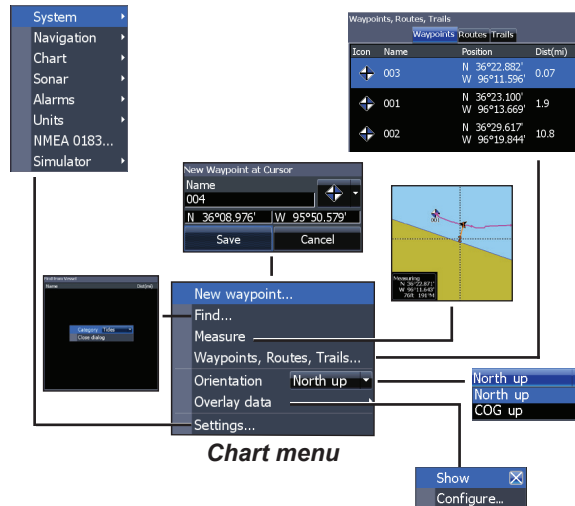


Chart Menu

Press **MENU** from the Chart page to open the Chart menu. Press **ENTER** to launch the New waypoint dialog.

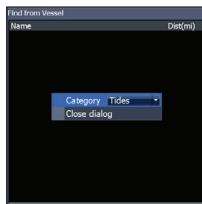


New Waypoint

Creates a waypoint at your current location or at the cursor position. When the cursor is on the screen, waypoints will be saved at the cursor position. If the cursor is not active, waypoints will be saved at your current position.

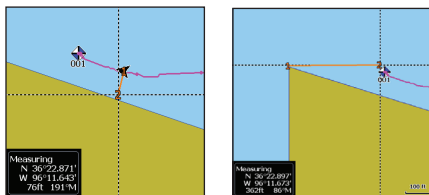
Find

Used to search for chart categories from the cursor position or from the vessel position.



Measure

The cursor can be used to measure the distance between two items on the chart.



To measure distance:

1. Select *Measure* and press **ENTER**.
2. Move the cursor to the desired location. The distance will be shown in the measuring dialog.

3. To measure from the cursor position to a new location, press **ENTER** and move the cursor to a new location.
4. To stop measuring, press **MENU** and select *Stop measuring*.

Waypoints, Routes, Trails

Used to create, edit, navigate and delete waypoints, routes and trails.

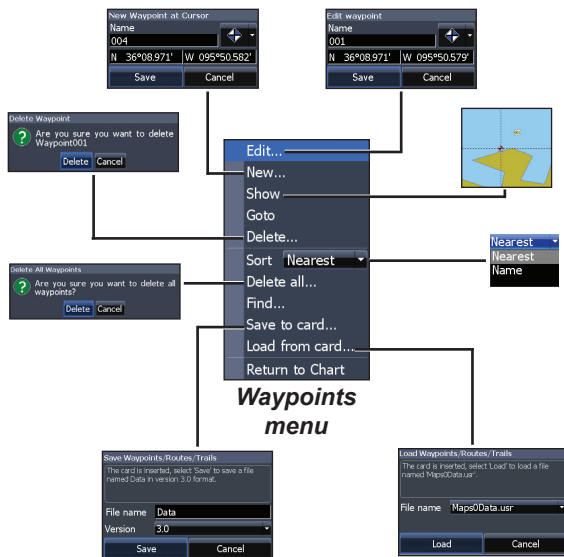
Press the keypad left/right to toggle between waypoints, routes and trails tabs.

Icon	Name	Position	Dist(m)
↕	003	N 36°22.882' W 96°11.596'	0.07
↕	001	N 36°23.100' W 96°13.669'	1.9
↕	002	N 36°29.617' W 96°19.844'	10.8

Waypoints Screen



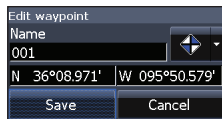
Waypoints menu



Waypoints menu

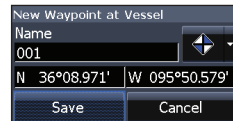
Edit

Allows you to edit the name, icon and latitude/longitude of a selected waypoint.



New

Creates a new waypoint at the cursor or vessel position. You can also select waypoint name, icon and latitude/longitude from the new waypoint dialog.



Show

Displays the selected waypoint on the map.

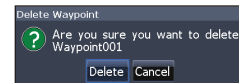


Goto

Allows you to navigate to a waypoint.

Delete and Delete All

Delete is used to delete a selected waypoint. Delete All deletes all waypoints.



Sort

Controls how the waypoints list will be sorted — by name or by nearest.

Routes Screen

Used to create, edit, navigate and delete routes. Use the keypad to highlight the Routes tab to access the Routes screen.

Name	Start	End	Legs	Dist(m)
Route 1	003	(3)	2	3.7

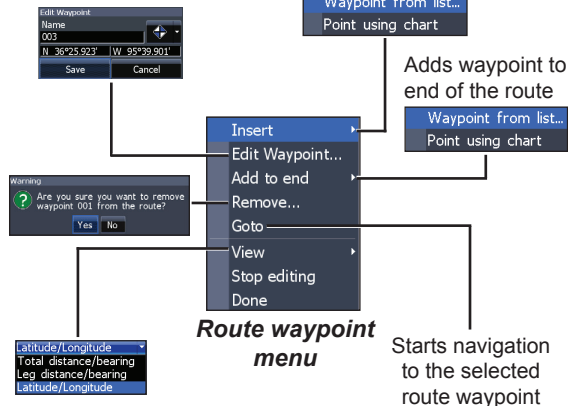
Routes screen



Edit...
New...
Show
Start...
Delete...
Delete all...
Save to card...
Load from card...
Return to Chart

Routes menu

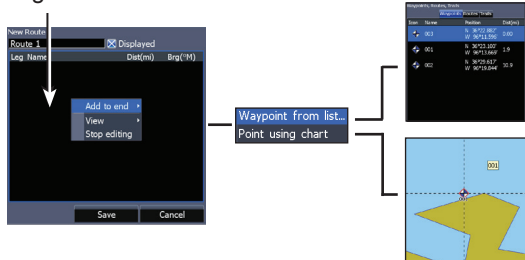
Inserts waypoint between existing route waypoints



Creating a route

Routes can be created by inserting waypoints from the waypoints list or by using the cursor to position points on the chart. You also can add waypoints to a route by selecting them from the chart screen.

Leg Name field



To create a route from waypoint list:

1. Press **MENU** from the Routes screen.
2. Select *New...* and press **ENTER**.
3. Press the keypad down to highlight the Leg Name field and press **ENTER**.
4. Press **MENU**, select *Add to End* and press **ENTER**.
5. Select *Waypoint from list* and press **ENTER**.
6. Select the desired waypoint and press **ENTER**.

7. Press **MENU** and select *Add to end* to add another waypoint to the route.
8. Repeat Steps 5-7 until the route is complete, press **MENU**, select *Stop Editing* and press **ENTER**.
9. Select *Save* and press **ENTER**.

Creating a route using points from chart:

1. Repeat Steps 1-4 from the instructions for Creating a route from waypoint list.
2. Select *Points using chart* and press **ENTER**. The chart page will appear.
3. Move the cursor to the desired location. Press **ENTER** to set a point.
4. Repeat Step 3 to add more points.
5. Press **MENU** and select *Stop adding*. Press **ENTER**.
6. Select *Save* and press **ENTER**.

Navigating a route

Routes can be navigated in forward or reverse.

1. Highlight the desired route on the Route screen and press **MENU**.
2. Select *Start* and press **ENTER**.



3. Select *Forward* or *Reverse* and press **ENTER**.
4. Press **MENU** and select *Return to Chart*. Press **ENTER**.

To cancel navigation:

1. Press *Menu* from the chart screen.
2. Select *Navigation* and press **ENTER**.
3. Highlight *Cancel* and press **ENTER**.
4. Select *Yes* and press **ENTER**.

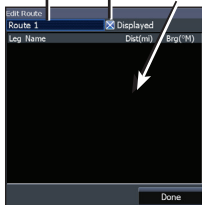
Edit and New Route dialogs

Used to edit/create routes, route names and to turn on/off the route display.



Displays/hides route on the map

To edit/create a route, use the keypad to select the Route Leg Name field and press **ENTER**.



To access the “Edit” or “New Route” dialog, select **Edit** or **New** on the Routes menu and press **ENTER**.

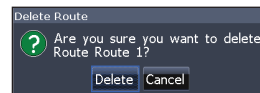
To finalize changes on the “Edit” or “New Route” dialogs, highlight the **Done** button and press **ENTER**.

Displayed

Used to show/hide a route on the display, which prevents the screen from being cluttered by too many routes

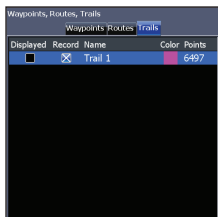
Delete and Delete All

Delete is used to delete individual routes. Delete All, removes all routes.

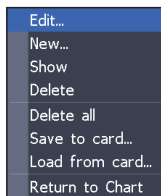


Trails Screen

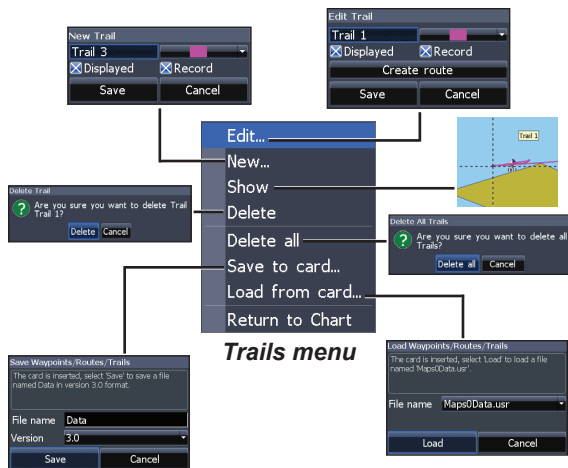
Used to create, edit, navigate and delete trails. Use the keypad to highlight the Trails tab to access the Trails screen.



Trails screen



Trails menu



Trails menu

Creating trails

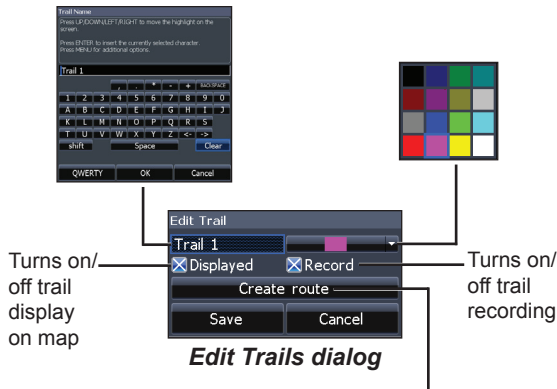
When creating a trail you can customize the trail name and color from the New Trail.

To create a trail:

1. Select *New* and press **ENTER**. The New Trail dialog will appear.
2. Select *Save* and press **ENTER**.

Edit and New Trail dialogs

Allows you to edit/create trails, select trails names, trail color, trail display and the trail being recorded. You can also convert a trail into a route from the Edit Trails dialog.



Navigating a trail

A trail must be saved as a route before it can be navigated.

To save a trail as a route:

1. Highlight the desired trail on the Trails screen and press **ENTER**. The Edit Trail menu will appear.
2. Highlight *Create Route* and press **ENTER**. The Edit Route menu will appear.
3. Highlight *Done* and press **ENTER**.
4. For navigation instructions refer to the “Navigating a route” segment.

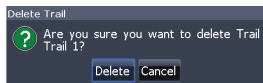
Displayed and Record

Displayed allows you to show/hide trails on the map display, preventing the screen from being cluttered with trails.

The Record command allows you to record or resume recording a desired trail.

Delete and Delete All

Delete is used to remove individual trails. Delete All removes all trails.

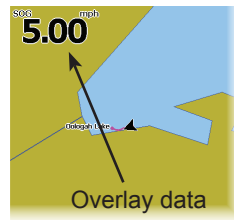


Orientation

Allows you to select North Up or Course Over Ground (COG) as the map orientation.

Overlay Data

Allows you to select data to be displayed on top of the Chart page.



Overlay data setup is covered in the "Pages" section.

Settings

Accesses the "Chart settings" menu.

Chart Settings

Controls map data used on the chart screen as well as display settings like grid lines, waypoints, routes and trails.

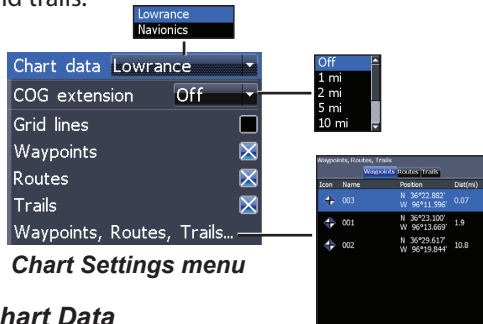


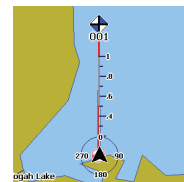
Chart Settings menu

Chart Data

Selects map data that will be used on the Chart display (Lowrance or Navionics regional map). Go to Navionics.com to see a full selection of available charts.

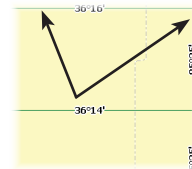
COG Extension

A line extending from the front of the current position icon that estimates the time and distance to areas in front of you.



Grid Lines

Displays base values for latitude and longitude, making it easier to get a general idea of your location on the latitude/longitude scale.



Waypoints, Routes and Trail displays

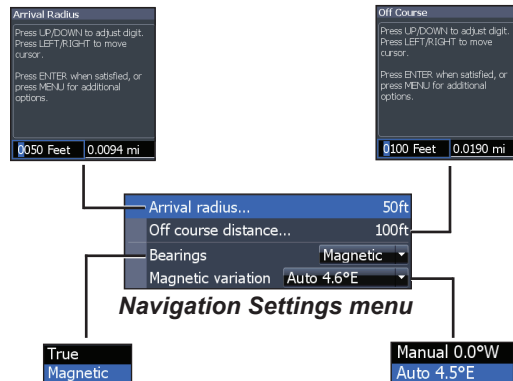
From the Chart Settings menu, you can turn on/off waypoint, route and trail display properties. Turning off display properties allows you to get a better view of the map, if the screen becomes cluttered with waypoints, routes and/or trails.

Waypoints, Routes, Trails

Accesses the Waypoints, Routes & Trails screen. Waypoints, Routes and Trails are covered in the “Chart operation” section.

Navigation Settings (Advanced mode only)

Controls Arrival Radius and Off Course distance settings and is used to turn on/off WAAS/MSAS/EGNOS.



Arrival Radius

Sets the arrival radius threshold for the Arrival alarm. The arrival alarm will sound when your vessel comes within a selected distance (arrival radius) of the destination waypoint.

Off Course Distance

Sets Off Course Distance threshold for the Off Course alarm. When the selected off course distance is exceeded, the Off Course alarm will sound when the alarm is enabled.

Bearings

Controls whether bearing will be calculated using True North or Magnetic North. Magnetic North should be used when navigating with a compass course or heading; otherwise use the default setting, True North.

Magnetic Variation

Controls whether magnetic variation will be calculated using Automatic or Manual settings. Magnetic variation is the angle between magnetic north and true north. The automatic setting reconciles the variation for you.

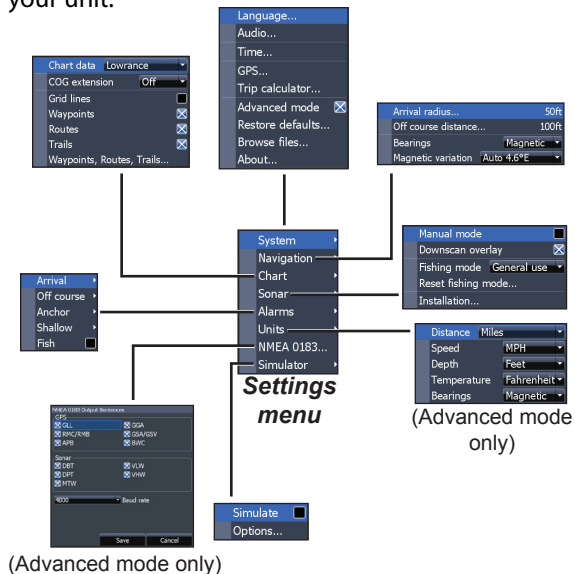


WARNING: *You should only use the Manual magnetic variation setting if you have variation information from a verified source.*

Settings

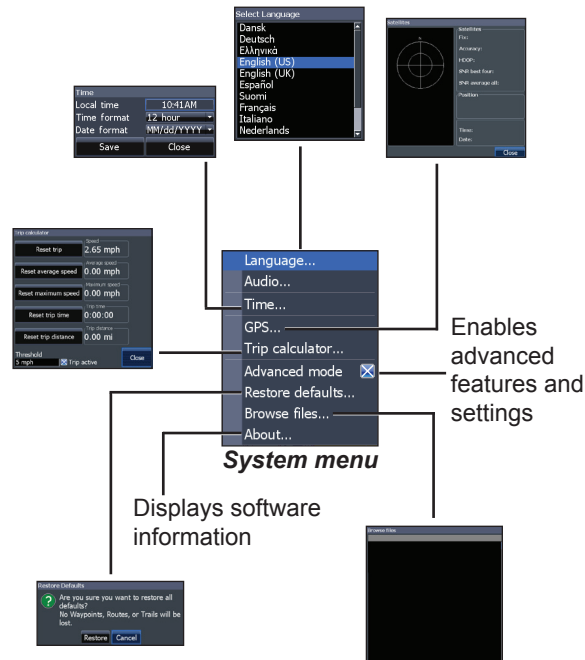
Settings menu

Accesses installation and configuration settings for your unit.



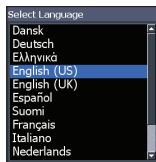
System

Adjusts unit settings like language, mute audio and advanced mode.



Set Language

Selects the language used on menus and text boxes.

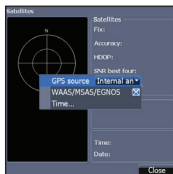


Audio

Adjusts volume and turns on/off unit audio, like key beeps, alarm sounds, etc.

GPS

Monitors the location of satellites in view and the quality of the unit's satellite lock-on. GPS Source, WAAS/MSAS/EGNOS and Time features are accessed from the GPS dialog.



GPS Source

Selects the antenna your unit will use for GPS. You will use the built-in GPS antenna unless you have a LGC-16W external antenna (p/n: 000-00146-001).

WAAS/MSAS/EGNOS

Turns on/off WAAS, MSAS and EGNOS.

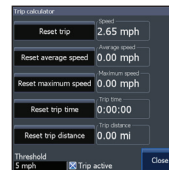
All three systems help increase GPS accuracy for different parts of the world.

Time

Used to set local time, and time and date formats for your unit.

Trip Calculator

Tracks trip time, speed and distance when you are moving faster than the selected threshold.



Advanced Mode

Enables features and settings only available with unit in Advanced Mode.

Restore Defaults

Switches the unit back to default settings.

Browse Files

Allows you to view a list of the files saved to the microSD card.

Saving Screenshots

You can save screenshots to a microSD card by inserting a microSD card into the card slot and pressing Power and then Zoom (+).

You must view files on a computer or other microSD compatible device.

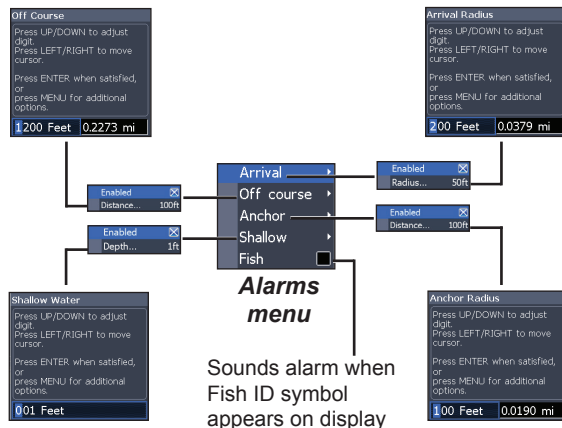
About

Displays software information about this unit. Before attempting a software update, you can check the version of software your unit is using by accessing the About screen.

Lowrance periodically updates unit software to add features and improve functionality. To see the latest available software version go to www.lowrance.com.

Alarms

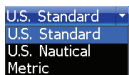
Enables alarms and selects alarm thresholds. "Arrival," "Off Course" and "Anchor" alarms are only available in Advanced mode.



Alarms	
Arrival	sounds alarm when you are within a selected distance of your destination (Advanced Mode only)
Off Course	sounds alarm when course exceeds a selected off-course threshold (Advanced Mode only)
Anchor	sounds alarm when vessel moves a selected distance (Advanced Mode only)
Shallow	sounds alarm when vessel enters water shallower than the selected shallow threshold
Fish	sounds alarm when a fish symbol (Fish ID) appears on the sonar screen

Units

Allows you to select the unit of measure used by the unit. Unit options vary depending on whether the unit is in basic or advanced mode.



Basic Mode



Advanced Mode

NMEA 0183 Output

You can select the NMEA 0183 sentences the unit will use when connected to a VHF radio or other NMEA 0183 device.



You can also adjust the Baud rate, but the default setting works best under most conditions.

Simulator

Simulates GPS and/or sonar activity. Simulations can be customized on the Simulator options menu.

Elite-5 HDI	
General	
Case Size	5.4" H (136 mm) x 6.9" W (174 mm); 5.9" H (151 mm) with bracket
Display	(5" diagonal) 16-bit color Full color VGA Solar MAX™ Plus TFT
Waterproof standard	IPX7
Backlight	LED (11 levels)
Communications	NMEA 0183 Output
Declaration of Conformity	Part 15.103 FCC rules & CE RTTE directive 1999/5/EC
Power	
Transmit Power	250W RMS; 30,000 PTP
Power Requirement	12V
Voltage Input	10 to 17V
Current drain	Typical: 1.1A
Fuse type	3-amp Automotive

Sonar	
Max depth	300ft (91 m) 455/800Khz 1000ft (305 m) 83/200kHz 2500ft (762 m) 50/200kHz
Transducer Frequency	455/800kHz and 83/200kHz or 50/200kHz
Max speed	70mph
Transducer	HDI 50/200kHz HDI 83/200kHz 83/200kHz
Transducer cable	20ft (6m)
GPS	
Mapping card slot	microSD and microSDHC
GPS Antenna	High accuracy GPS antenna (internal); optional external GPS antenna sold separately
Mapping compatibility	Fishing Hot Spots & Navionics (Hotmaps, Premium and Gold)
Waypoints, Routes & Trails	Up to 3000 waypoints, 100 routes/100 waypoints per route, 100 retracable plot trails/up to 10,000 points per trail

Index

- A**
 - About 46
 - Adjust menu 23
 - Advanced Mode 11
 - Alarms 46
 - Amplitude Scope 27
 - Anchor alarm 47
 - Arrival alarm 47
 - Arrival Radius 43
 - Auto Sensitivity 24
- B**
 - Bearings 43
 - Browse Files 46
- C**
 - Cancel navigation 36
 - Chart 41
 - Chart Data 41
 - Chart menu 41
 - Chart Page 13
 - COG Extension 41
 - Color 20, 26
 - Colorline 24
 - Contrast 18
 - Creating a route 34
 - Creating trails 38
 - Cursor 10
 - Custom Range 19, 24
- D**
 - Data Port 45
 - Depth Range 19
 - Dialogs 8
 - DownScan menu 17
 - Dropdown menus 8
- E**
 - Editing waypoints 33
- F**
 - Fish alarm 47
 - Fish ID 27
 - Fishing Mode 9
 - Fishing Modes
 - Reset 29
 - Frequency 19, 25
- G**
 - Goto cursor 10
 - Goto waypoint 33
 - GPS Source 45
 - GPS Status 45
 - Grid Lines 41
- I**
 - Installation menu 30
- K**
 - Keel Offset 30
- L**
 - Language 45
- M**
 - Magnetic Variation 43
 - Man Overboard waypoint 4
 - Manual Mode 29
 - microSD cards 5
 - Mute Audio 45
- N**
 - Navigating a route 35
 - Navigating a trail 39
 - Navigation 42

Navigation menu 42
New Waypoint 31
NMEA 0183 47
Noise Rejection 20, 26

O

Off Course alarm 47
Off Course Distance 43
On/Off features 8
Orientation 40
Overlay Data 15, 21, 40
 Configure 15
 Customizing 16
 Show 15

P

Page menus 6
Page selection 6
Ping Speed 25

R

Range 19

Reset Fishing Mode 29
Reset water distance
 30
Route display 42
Routes Screen 34

S

Saving Screenshots 46
Scrollbars 8
Selecting a GPS Source
 4
Sensitivity 24
Setup wizard 6
Shallow alarm 47
Software Updates 46
Sonar Installation 30
Sonar Menu 22
Sonar Options menu
 26
Sonar Page 12
Sonar settings 28
Sort waypoints 34
Split Flasher 26

Split Zoom 26
Standby mode 11
Steer Page 12
Stop Sonar 21, 27
Surface Clarity 20, 26
System settings 44

T

Temperature calibration 30
Text entry 9
Time 45
Trackback 17
Trail display 42
Trails Screen 38
Turn unit on/off 4

U

Unit Controls 4

Units 47
Upper and Lower Limits
 19, 24

W

WAAS/MSAS/EGNOS
 45
Waypoint display 42
Waypoints, Routes,
 Trails 32
Working with menus 8

Navico Databases License Agreement

THIS IS A LEGAL AGREEMENT BETWEEN THE END-USER WHO FIRST PURCHASES THIS PRODUCT AS A CONSUMER ITEM FOR PERSONAL, FAMILY, OR HOUSEHOLD USE ("YOU") AND NAVICO, THE MANUFACTURER OF THIS PRODUCT ("WE", "OUR", OR "US").

USING THE PRODUCT ACCOMPANIED BY THIS LICENSE AGREEMENT CONSTITUTES ACCEPTANCE OF THESE TERMS AND CONDITIONS.

IF YOU DO NOT ACCEPT ALL TERMS AND CONDITIONS, PROMPTLY RETURN THE PRODUCT WITHIN 30 DAYS OF PURCHASE. PLEASE RETURN USING THE ENCLOSED UPS SHIPPING LABEL AND INCLUDE: PROOF OF PURCHASE, NAME, ADDRESS, AND PHONE NUMBER. YOUR PURCHASE PRICE AND ANY APPLICABLE TAXES WILL BE REFUNDED. PLEASE ALLOW 4-6 WEEKS TO PROCESS YOUR REFUND.

1. This License Agreement applies to the one or more databases that your product may contain. We refer to these singly as a "Database" and together as the "Databases." Your product may thus include the "WBS Database" which contains worldwide background surface mapping data, the "Indigo Database" which contains inland mapping data, or other Databases.
2. The Databases that your product may contain are licensed, not sold. We grant to you the nonexclusive, nonassignable right to use these Databases for supplemental navigation reference purposes, but only as long as you comply with the terms and conditions of this License Agreement. We reserve the right to terminate this license if you violate any aspect of this License Agreement. You are responsible for using official government charts and prudent navigation for safe travel.
3. The Databases housed in your product are protected by the copyright notices appearing on the product or its screen(s). You may NOT modify, adapt, translate, reverse engineer, decompile, disassemble, rent, lease, or resell any Database, and you may NOT create derivative works based upon any Database or its contents. Any unauthorized reproduction, use, or transfer of a Database may be a crime and may subject you to damages and attorney fees.
4. This License Agreement will terminate immediately without prior notice from us if you fail to comply with or violate any of the provisions of this Agreement. Upon termination, you will promptly return all products containing one or more Databases to us.
5. Prices and programs are subject to change without notice.
6. This License Agreement shall be governed by the laws of the State of Oklahoma and comprises the complete and exclusive understanding between you and us concerning the above subject matter.

Databases Limited Warranty

"We", "our", or "us" refers to Navico, the manufacturer of this product. "You" or "your" refers to the first person who purchases the product as a consumer item for personal, family, or household use. The Databases Limited Warranty applies to the one or more databases that your product may contain. We refer to each of these as a "Database" or together as the "Databases." Your product may thus include the "WBS Database" which contains worldwide background surface mapping data, the "Indigo Database" which contains inland mapping data, or other Databases.

We warrant to you that we have accurately compiled, processed, and reproduced the portions of the source material on which the Databases are based. However, we are under no obligation to provide updates to the Databases, and the data contained in the Databases may be incomplete when compared to the source material. WE MAKE NO EXPRESS OR IMPLIED WARRANTY OF ANY KIND ABOUT THE ACCURACY OF THE SOURCE MATERIAL ITSELF, INCLUDING BUT NOT LIMITED TO IMPLIED WARRANTIES OF MERCHANTABILITY OR FITNESS FOR A PARTICULAR PURPOSE.

If there is a defect in any Database, your exclusive remedy shall be, at our option, either a refund of the price you paid for the product containing the defective Database or a replacement of such product. WE WILL NOT UNDER ANY CIRCUMSTANCES BE LIABLE TO ANYONE FOR ANY SPECIAL, CONSEQUENTIAL, INCIDENTAL, OR OTHER INDIRECT DAMAGE OF ANY KIND.

Some states do not allow the exclusion or limitation of incidental or consequential damages, so the above limitations or exclusions may not apply to you.

This warranty does NOT apply in the following circumstances: (1) when the product has been serviced or repaired by anyone other than us; (2) when the product has been connected, installed, combined, altered, adjusted, or handled in a manner other than according to the instructions furnished with the product; (3) when any serial number has been effaced, altered, or removed; or (4) when any defect, problem, loss, or damage has resulted from any accident, misuse, negligence, or carelessness, or from any failure to provide reasonable and necessary maintenance in accordance with the instructions of the owner's manual for the product.

We reserve the right to make changes or improvements in our products from time to time without incurring the obligation to install such improvements or changes on equipment or items previously manufactured.

This warranty gives you specific legal rights and you may also have other rights which may vary from state to state.

Your remedies under this warranty will be available so long as you can show in a reasonable manner that the defect occurred within one (1) year from the date of your original purchase, and we must receive your warranty claim no later than 30 days after such 1-year period expires. Your claim must be substantiated by a dated sales receipt or sales slip.

Contact information

Customer Service:

1-800-628-4487

(8 a.m. to 5 p.m. Central Standard Time, M-F)

(Canada)

1-855-361-1564

canada@navico.com

(8 a.m. to 5 p.m. Eastern Standard Time, M-F)

Ordering Accessories

<http://store.navico.com/>

Visit our website

www.lowrance.com

Visit our website:

www.lowrance.com

