

WOODS/RAINY VERSION 4

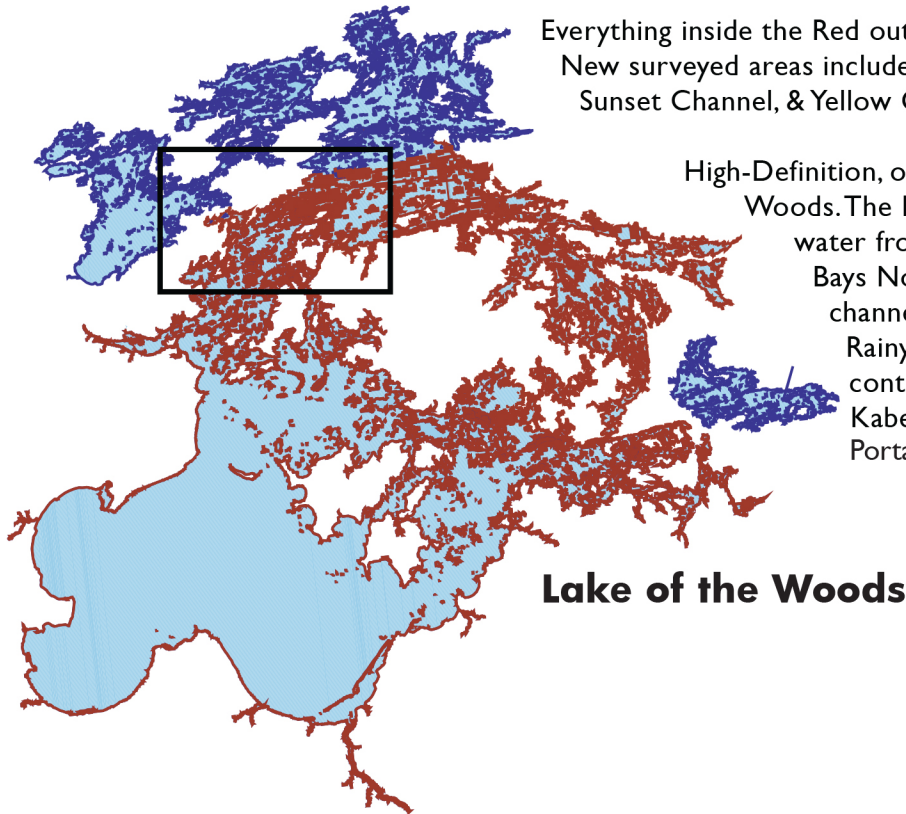
HUMMINBIRD® COMPATIBLE SD CARD COVERAGE



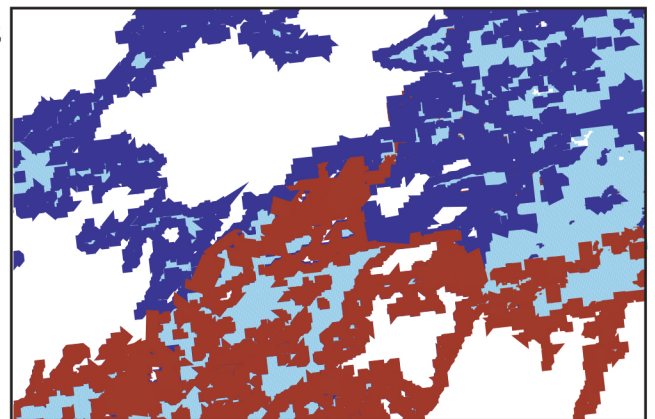
Everything inside the Red outline will display High-Definition, one-foot contours. New surveyed areas include Blueberry Inlet, Deadbroke Channel, Long Bay, Sunset Channel, & Yellow Girl Bay. Also includes detailed roads and base map.

High-Definition, one-foot Contours for nearly all of Lake of the Woods. The High-Definition detail covers all U.S. and Canadian water from Big Narrows through Big Traverse & Sabaskong Bays North to Sioux Narrows and west beyond Deadbroke channel (750,000 total surveyed acres). Rainy Lake & the Rainy River now including High-Definition, one-foot contours for Redgut & Rice Bay, all of Lakes Kabetogama, Namakan, Sand Point, and Crane. Portage Bay and Outer Bay not yet surveyed.

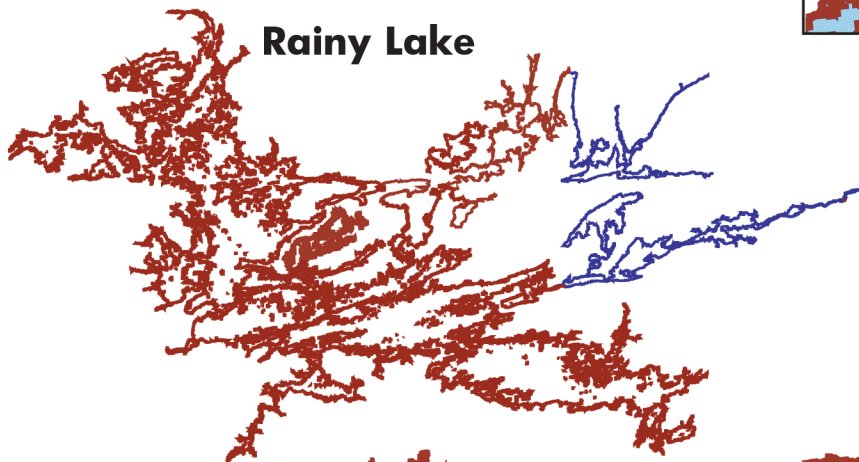
Blue areas not surveyed, no contours.



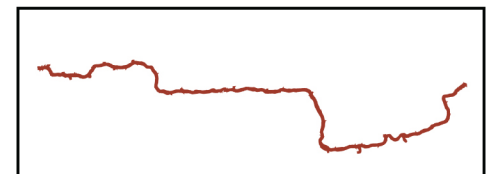
Lake of the Woods



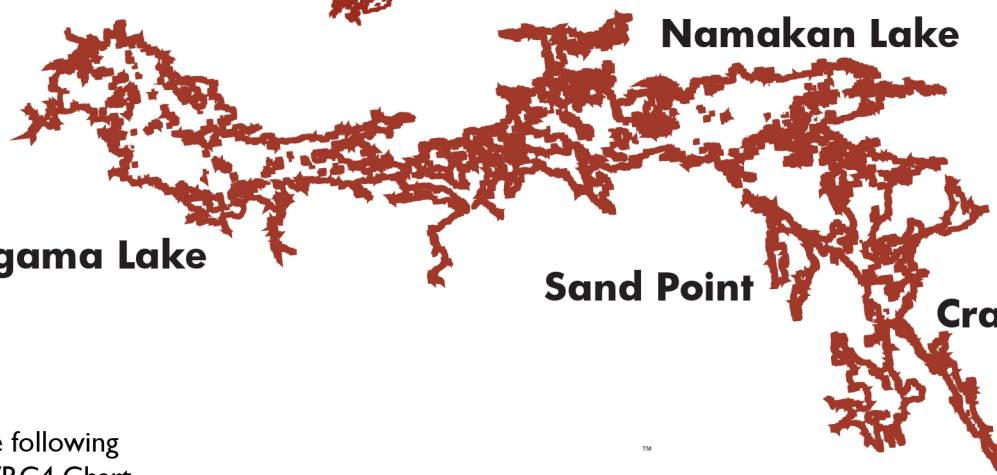
Inset- Big Narrows



Rainy Lake



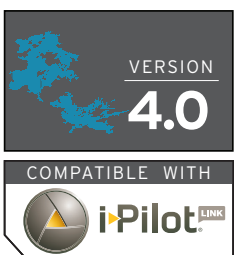
Rainy River



Namakan Lake

Sand Point

Crane Lake



Kabetogama Lake

This coverage map applies to the following LakeMaster® Woods/Rainy HPWRC4 Chart

Woods/Rainy Updated Surveys

Updated water in yellow from version 3.



South East portion of Lake of the Woods

Updated water in yellow.

Note: The lake elevation at the time of survey was 1059 feet