

**LOWRANCE®**

# HOOK-3x DSI

Operation manual

ENGLISH



**HOOK-3x DSI**

**Copyright © 2015 Navico**

**All rights reserved.**

Lowrance® and Navico® are registered trademarks of Navico.

**Navico may find it necessary to change or end our policies, regulations and special offers at any time. We reserve the right to do so without notice. All features and specifications subject to change without notice.**

***Compliance Statement:***

***Lowrance HOOK-3x DSI***

- Comply with CE under EMC directive 2004/108/EC
- Comply with the requirements of level 2 devices of the Radiocommunications (Electromagnetic Compatibility) standard 2008.







The relevant Declaration of Conformity is available in the following website under model documentation section: <http://www.lowrance.com>.



**WARNING:** It is your sole responsibility to install and use this instrument in a manner that will not cause accidents, personal injury or property damage. Always observe safe boating practices.

# Introduction

---

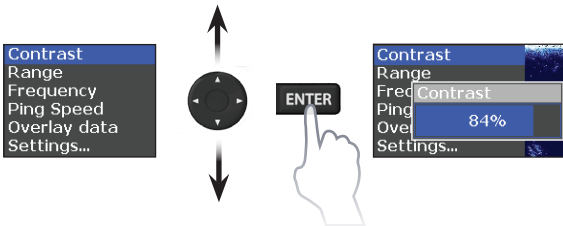
Unit Controls	
	<b>LIGHT/POWER:</b> controls backlight level and turns unit on/off
	<b>KEYPAD:</b> controls cursor & selects items on menus
	<b>FREQUENCY:</b> changes the transducer frequency
	<b>MENU:</b> opens settings and page menus
	<b>ENTER:</b> finalizes menu selections
	<b>ZOOM KEYS:</b> (+) zooms in display; (-) zooms out display

Getting Started	
<b>Turn unit on/off</b>	To turn on/off the unit, press and hold the <b>LIGHT/POWER</b> key for three seconds.
<b>Adjusting the backlight</b>	Press the <b>LIGHT/POWER</b> key to switch backlight levels. This unit has 11 backlight levels.
<b>Muting audio</b>	Select Audio from the Settings menu to turn on/off unit audio.

# Basic Operation

## Accessing menu items

The keypad and **ENTER** key are used to select menu items and open submenus. Use the keypad to highlight the desired item and press **ENTER** to open its submenu or dialog.



**NOTE:** Press the **MENU** key to exit menus.

## Dialogs

Dialogs are used for user input or for presenting information to the user.

Depending on the type of entry, different methods are used to confirm, cancel or close the dialog.

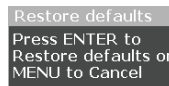


## Cursor

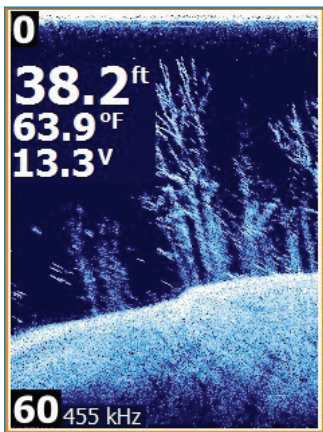
The keypad moves the cursor on the display.

## Restore defaults

Resets the unit to default settings. Restore defaults is accessed on the Settings menu.



# DownScan Operation



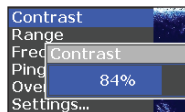
## DownScan menu

Press **MENU** from the DownScan page to view the DownScan menu.

- Contrast
- Range
- Frequency
- Ping Speed
- Overlay data
- Settings...

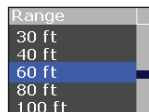
## Contrast

Adjusts the brightness ratio between light and dark areas on the screen, making it easier to distinguish suspended objects from the background.



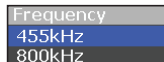
## Range

Range settings display the section of the water column from the water surface to the selected depth range.



## Frequency

Controls the transducer frequency used by the unit. 800 kHz offers the best resolution, while 455 kHz has greater depth coverage.

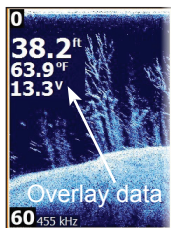


## ***Ping Speed***

Controls the rate the unit uses to send sonar waves into the water. Ping speed adjustments can help reduce interference from other transducers.

## ***Overlay Data***

Allows you to select data to be displayed on top of the DownScan page.



## ***Settings***

Accesses the Settings menu.

# Settings

## Settings menu

MENU



Alarms
Units
Backlight
Audio
Language
Simulator
Restore defaults
About

## Alarms

Enables alarms and selects alarm thresholds.

Alarms	
<b>Deep</b>	Sounds the alarm when the vessel enters water deeper than the selected threshold
<b>Shallow</b>	Sounds the alarm when the vessel enters water shallower than the selected threshold
<b>Low battery</b>	Sounds the alarm when voltage falls below the selected threshold

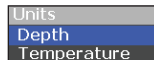
## To input threshold values:

1. Select Set Value
2. Press the keypad up or down to increase/decrease the numerical value.
3. Press the keypad left/right to select the previous/next digit.



## Units

Selects the unit of measure used for depth and temperature (Metric or US Standard).



## Backlight

Adjusts the brightness of the backlight. This unit has 11 backlight levels. The backlight can also be adjusted by tapping the **LIGHT/POWER** key.

## **Audio**

Turns on/off unit audio.

## **Language**

Selects the language used on menus, dialogs and text boxes. The unit will restart when the language is changed.

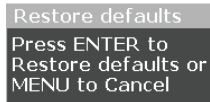
## **Simulator**

Simulates sonar activity allowing you to become familiar with the unit before taking it out on the water.



## **Restore Defaults**

Resets the unit to default settings.



## **About**

Displays software information about the unit.



<b>HOOK-3x DSI</b>	
<b>General</b>	
<b>Case Size</b>	5.4" H (134 mm) x 6.8" W (174 mm); 6" H (152 mm) with bracket
<b>Display</b>	(3.5" (8.9 mm) diagonal) 256 color TFT LCD
<b>Waterproof standard</b>	IPX7
<b>Backlight</b>	LED (11 levels)
<b>Power</b>	
<b>Transmit Power</b>	500 W RMS
<b>Power Requirement</b>	12 V
<b>Voltage Input</b>	10 to 17 V
<b>Fuse type</b>	3-amp Automotive
<b>Sonar</b>	
<b>Max depth</b>	300 ft (91 m)
<b>Transducer Frequency</b>	455/800 kHz
<b>Max speed</b>	70 mph
<b>Transducer</b>	455/800 kHz DSI transducer
<b>Transducer cable</b>	20 ft (6 m)



## **Contact information**

### **Customer Service**

AMER: 800-628-4487

EMEA: +44 1794 51 0010

APAC: 1300 628426

### **Ordering accessories**

US: <http://store.navico.com>

Other countries: Visit your local dealer or distributor.

### **Visit our website**

For additional regional support information:

[www.lowrance.com/technicalsupport](http://www.lowrance.com/technicalsupport)



**LOWRANCE®**