

## FCC WARNINGS

- **Warning:** Changes or modifications to this unit not expressly approved by the party responsible for compliance could void the user's authority to operate the equipment.

NOTE: This equipment has been tested and found to comply with the limits for a Class B digital device, pursuant to Part 15 of the FCC Rules. These limits are designed to provide reasonable protection against harmful interference in a residential installation. This equipment generates, uses, and can radiate radio frequency energy and, if not installed and used in accordance with the instructions, may cause harmful interference to radio communications. However, there is no guarantee that interference will not occur in a particular installation. If this equipment does cause harmful interference to radio or television reception, which can be determined by turning the equipment off and on, the user is encouraged to try to correct the interference by one or more of the following measures:

- Reorient or relocate the receiving antenna.
- Increase the separation between the equipment and receiver.
- Connect the equipment into an outlet on a circuit different from that to which the receiver is connected.
- Consult the dealer or an experienced radio/TV technician for help.

## ADDITIONAL WARNINGS

- **WARNING:** To prevent fire or shock hazards, do not expose this unit to rain or moisture.
- **WARNING :** Where the mains plug or appliance coupler is used as the disconnect device, such disconnect device shall remain readily operable.
- Lithium batteries, like all rechargeable batteries, are recyclable and should be recycled or disposed of according to state and local guidelines. They should never be disposed of in normal household waste and they should never be incinerated, as they might explode. Contact your local government for disposal or recycling practices in your area.
- **WARNING:** This product may contain chemicals known to the State of California to cause birth defects, or other reproductive harm (California Prop 65). Wash hands after handling.
- This product meets and complies with all Federal regulations.
- **To avoid hearing damage,** make sure that the volume on your music player is turned down before connecting your earbuds. After placing earbuds in/on your ears, gradually turn up the volume until you reach a comfortable listening level.



**WARNING:** This product can expose you to chemicals including lead, which is known to the State of California to cause cancer. For more information go to: [www.P65Warnings.ca.gov](http://www.P65Warnings.ca.gov)

## International Support

To download this User's Guide in English, Spanish, or French, or to get answers to frequently asked questions, visit the support section at: [www.iLiveElectronics.com](http://www.iLiveElectronics.com)

Para descargar este Manual del Usuario en Inglés, Español y Francés, o para obtener respuestas a preguntas frecuentes, visite la sección de apoyo en: [www.iLiveElectronics.com](http://www.iLiveElectronics.com)

Pour télécharger ce guide de l'utilisateur en Anglais, Espagnol ou Français, ou pour obtenir des réponses à des questions fréquemment posées, consultez la rubrique d'assistance sur: [www.iLiveElectronics.com](http://www.iLiveElectronics.com)

## Contact Information

**Website:** [www.iLiveElectronics.com](http://www.iLiveElectronics.com)  
**Email Support:** [proinfo@dpiinc.com](mailto:proinfo@dpiinc.com)  
**Email Parts:** [partsinfo@dpiinc.com](mailto:partsinfo@dpiinc.com)  
**Phone Support:** 1-888-999-4215

## Warranty

For Warranty Information and the most up-to-date version of this User's Guide, go to: [www.iLiveElectronics.com](http://www.iLiveElectronics.com).



Specifications are subject to change without notice.

Copyright © 2017 Digital Products International (DPI, Inc.)

All other trademarks appearing herein are the property of their respective owners.



## Wireless Stereo Earbuds

User's Guide for Model IAEB07 v1929-01

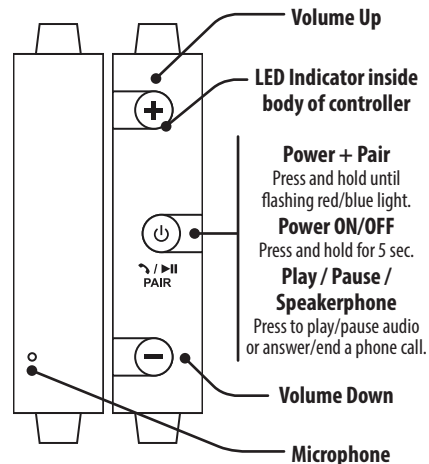
## Features

- Supports Bluetooth
- Wireless range: 33 feet
- Supports profile A2DP (Advanced Audio Distribution Profile)
- Voice prompts announce earbud operations
- Digital volume control
- Micro-USB port for battery recharge
- DC battery power: built-in rechargeable lithium ion battery

## Includes

- 3 pairs of eartips: 1 small, 1 medium, 1 large
- Micro-USB to USB charging cable

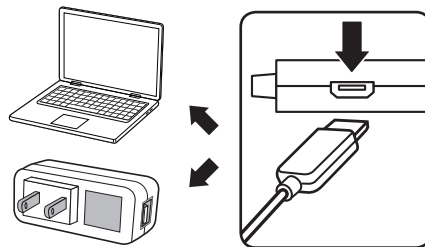
## Overview & Controls



## Charging the Battery

Initial charge time is approximately 2 hours. Charge fully before use. The low battery indicator will flash for 1 minute and a voice will announce "Low Battery," then the unit will automatically power OFF.

- Using a **Micro-USB to USB** cable (included), connect to the USB port of a powered on computer or USB power adaptor to charge.






Power Status	Indicator Light
Power ON	Flashing blue light
Low Battery	Flashing red light
Charging	Solid Red light
Finished Charging	Solid Blue light

## Initial Bluetooth Connection

1. With the earbuds powered OFF, **press and hold**  until they power ON and the indicator light begins flashing red and blue. *When pairing, remain within 3 feet of the Bluetooth device.*
2. Using the controls on your Bluetooth device, select **IAEB07** in the Bluetooth Settings to pair. *If need be, refer to the user's manual for your specific device for more information.*
3. When successfully paired, a voice will announce "Bluetooth is connected" and the LED indicator will begin slowly flashing blue. Audio from the connected Bluetooth device will now be heard through the earbuds.
4. Use the controls on the connected Bluetooth device to select and play audio. Use the earbud controls or the connected Bluetooth device to play, pause, and adjust the volume level.
5. After initial pairing, **press and hold**  for **approximately 5 seconds**. The earbuds will power ON and automatically connect to the Bluetooth device.

Bluetooth Status	Indicator Light
Pairing Bluetooth	Flashing red and blue lights
Successfully Paired	Slowly flashing blue light

## Using the Speakerphone

1. To accept a call, press the  button or use the controls on the connected phone.
2. To end a call, press the  button or use the controls on the connected phone.
3. To re-dial the last dialed number, press the  button twice.

## Previously Connected Devices

- The earbuds can remember multiple Bluetooth devices and will always try to re-connect to the last device used.
- To re-connect to a different device, turn off Bluetooth on unwanted devices, then access the Bluetooth settings menu on the device you wish to use and select **IAEB07**.

## Troubleshooting

If the earbuds should become unpaired or will not connect normally, follow these steps in your device's Bluetooth Settings Menu.

1. Delete the earbuds ("Forget This Device").
2. Turn Bluetooth OFF then ON again, and repeat the **Initial Bluetooth Connection** steps.