

# Lite-Flush Electric Toilet

## Product Update

### Re-launch of Lite-Flush Electric Toilet

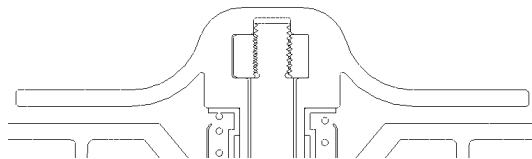
This bulletin is to inform you of some improvements that have been made to the Jabsco Lite-Flush Electric Toilet. Over the past 6-8 months our product engineering and management team have been working to address some customer concerns relating to the performance of the product.

#### Summary of changes made

- The two plastic drive gears have been upgraded to aluminum to address a potential issue where gears can be damaged when overloaded.



- The clearance between the impeller and shaft has been reduced to address a potential issue where material can become trapped under the impeller which can result in poor performance.



Please Note: The Jabsco Lite-Flush is designed to flush standard grade toilet tissue and waste only. It is not designed to pass wet wipes, wet strength kitchen towel, baby wipes or sanitary products. Failure to follow these instructions may cause damage to the drive belt resulting in the need to replace the belt.

#### Product Availability

The Jabsco Lite-Flush is now available to order. To ensure stock allocation, please contact your customer service representative.

Description	Part Number	UPC
Footswitch Variant – 12V	58500-0012	671880594189
Footswitch Variant – 24V	58500-0024	671880594196
Control Panel Variant – 12V	58500-1012	671880594202
Control Panel Variant – 24V	58500-1024	671880594219