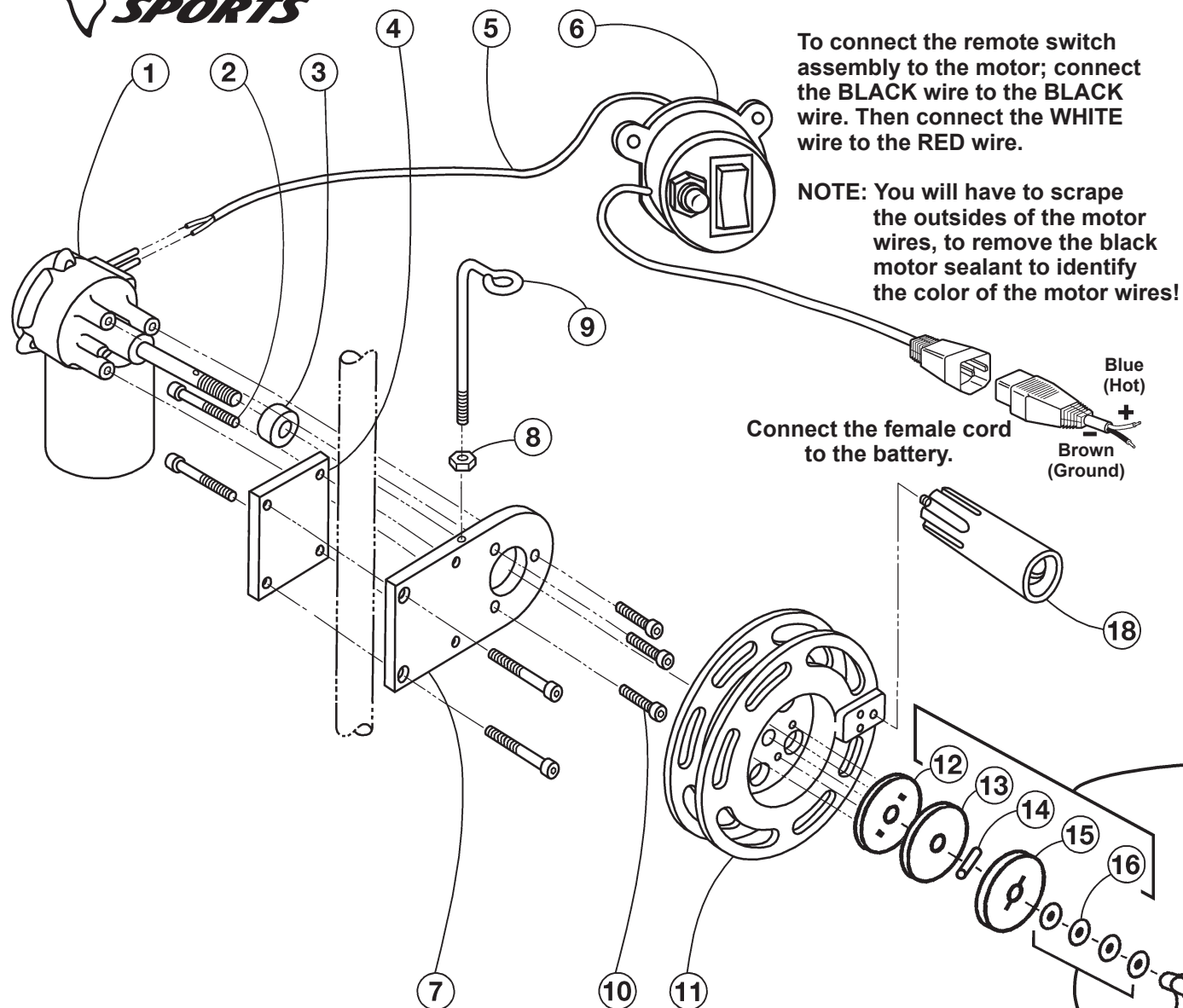




Single Electric Planer Reel



To connect the remote switch assembly to the motor; connect the BLACK wire to the BLACK wire. Then connect the WHITE wire to the RED wire.

NOTE: You will have to scrape the outsides of the motor wires, to remove the black motor sealant to identify the color of the motor wires!

Connect the female cord to the battery.

Blue (Hot)
Brown (Ground)

Parts List PM00001

Detail No.	Description	Qty.	Order By Part No.
1	Motor Assembly	1	2205
2	1/4-20 x 2-1/4 in. SH Cap Screws	4	2145
3	Hardened Spacer	1	51059
4	4 Hole Clamp Plate	1	53002
5	20 ft. Power Cord	1	2550
6	Remote Switch Assembly	1	51145ASM2
7	Reel Clamp Plate	1	53000
8	1/4-20 SS Hex Nut	1	2133
9	Guide / Eye	1	2500
10	1/4-28 x 1 in. SH Screws	3	2007
11	6 in. Reel	1	51174B
12	Inner Clutch Disk	1	51098
13	Graphite Pad	1	2308
14	Shaft Dowel Pin	1	2163
15	Outer Clutch Disk	1	51094
16	Belleville Washers	4	2232
17	Jr. Clutch Knob	1	51153
18	Handle Assembly	1	HA101

NOTICE:
This Improved Clutch System
Replaces All Clutch Systems
(With Disk And Clutch Plugs)
Built Before April, 2013



Correct Arrangement
Of Belleville Washers