

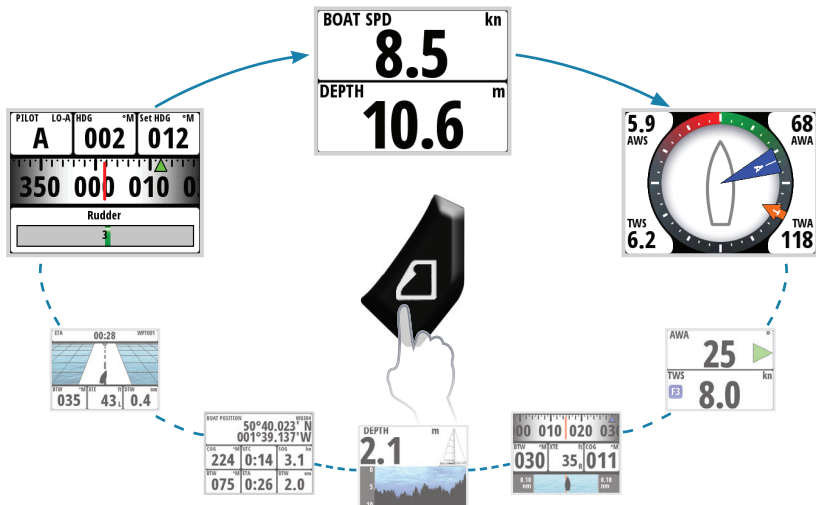
Triton Display & Pilot Controller

Quick Reference Guide



Display Keys	
	Menu / Enter / Lighting: Used to enter the main menu, select sub menus and confirm selection. Note: Press and holding the Enter key for 3 seconds takes you directly to the display setup lighting level screen. If the lighting level is set below 5 it will automatically increase to 5. Use the up and down keys to set the desired level and press Enter to confirm.
	Page: Scrolls through the eight default display pages and navigates back a step in menus. Note: the eight default display pages including Pilot page can be customized to display the required data.
	Directional keys: Scrolls up and down through selected menus / set values.
Pilot Controller Keys	
	Mode: Changes the Pilot mode. When in Auto mode pressing the mode key will change the Pilot to Wind mode. A long key press will change to Navigation mode which will require confirmation via the display before it is engaged.
	Off: Disengages the autopilot. Places the autopilot into 'Standby' mode.
	Left 1°: Adjust the set course or wind angle 1 degree / steer to Port in Non follow up mode. When pressed in Standby mode this will enter the Pilot into Non Follow Up Mode.
	Right 1°: Adjust the set course or wind angle 1 degree / steer to Starboard in Non follow up mode. When pressed in Standby mode this will enter the Pilot into Non Follow Up Mode.
	Left 10°: Adjust the set course or wind angle 10 degrees / steer to Port in Non follow up mode. When pressed in Standby mode this will enter the Pilot into Non Follow Up Mode.
	Right 10°: Adjust the set course or wind angle 10 degree / steer to Starboard in Non follow up mode. When pressed in Standby mode this will enter the Pilot into Non Follow Up Mode.
	Auto: Engage the autopilot.

Page navigation



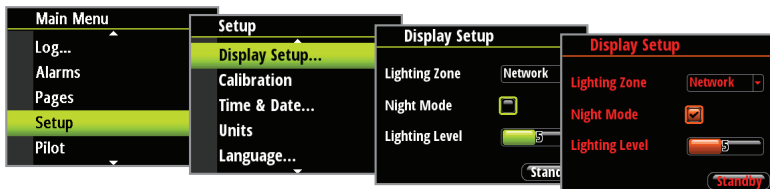
Menu navigation



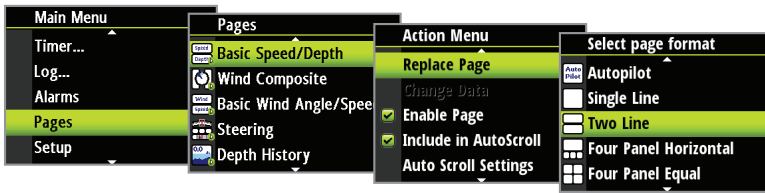
Back lighting



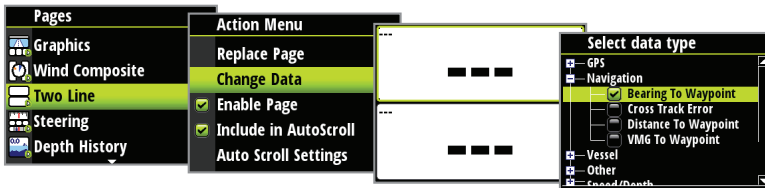
Night mode



Replacing a data page



Customizing a template page



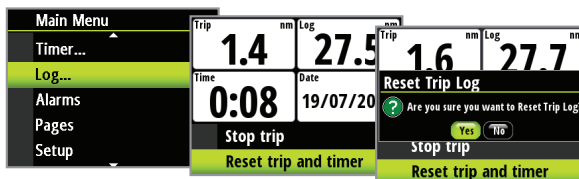
Disable / Enable a data page



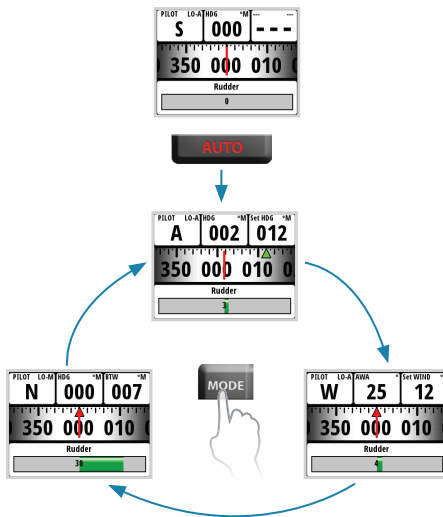
Start / Stop timer



Reset trip log



Changing the Pilot mode



Mode Symbol	Function / Mode
S	Standby
A	Auto (Compass)
W	Wind
N	Navigation
NFU	Non Follow Up (Power steer)

Tack & Gybe in wind mode

To tack or gybe in wind mode press both 1° course keys on the Pilot controller.

