

# LOWRANCE®

## HDS-8/8m & HDS-10/10m

### Quick Start Guide



#### Function keys



**Arrow Keypad** Activates cursor. Press up, down, left or right to move the cursor.

**ZOUT** Zooms out the Radar, Sonar and Chart pages.

**ZIN** Zooms in the Radar, Sonar and Chart pages.

**EXIT** Press to return to a previous screen, clear data and close menus. Pressing **EXIT** on the Chart page will quickly switch between displaying the boat symbol and the last cursor position.

**ENTER** Press to save data, change values and accept menu commands; also acts as a short cut key for important functions such as saving a waypoint at the cursor position on the Chart page.

**MENU** Accesses the features available on each page.

**PAGES** Press to select the page (screen) to display or to access utilities such as the waypoints list and celestial table. Press and hold to switch control between the panels and combo (split screen) pages.

**WPT FIND** Press to save a waypoint at your current GPS position. Press and hold to search for waypoints and other points of interest (POI's) or quickly access waypoints, routes and trails..

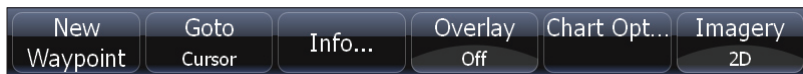
**LIGHT POWER** Press to turn the unit on, adjust the backlight or place the unit in low power (standby) mode. Press and hold to turn the unit off.

#### Creating a Man Overboard (MOB) position

Press the **ZOUT** and **ZIN** keys at the same time to create a MOB waypoint with a line to your boat position.

## Softkeys

To access softkey features, press the button below the softkey. When you have finished making adjustments press the softkey button again to close the menu.



*Chart page softkeys*

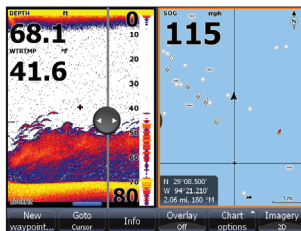
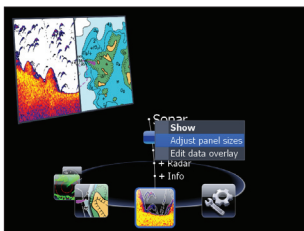
## Pages screen

**To view a page:**

1. From any screen press **PAGES** to access the Pages screen.
2. Select the the desired page display.

**To adjust Panel sizes on a Combo page:**

1. From the Pages screen select the desired combo page and press the **MENU** key. Selecting Sonar + Chart will display a Sonar and Chart combo page.
2. Select *Adjust panel sizes*. and press **ENTER**.
3. Use the keypad to adjust the panel size.

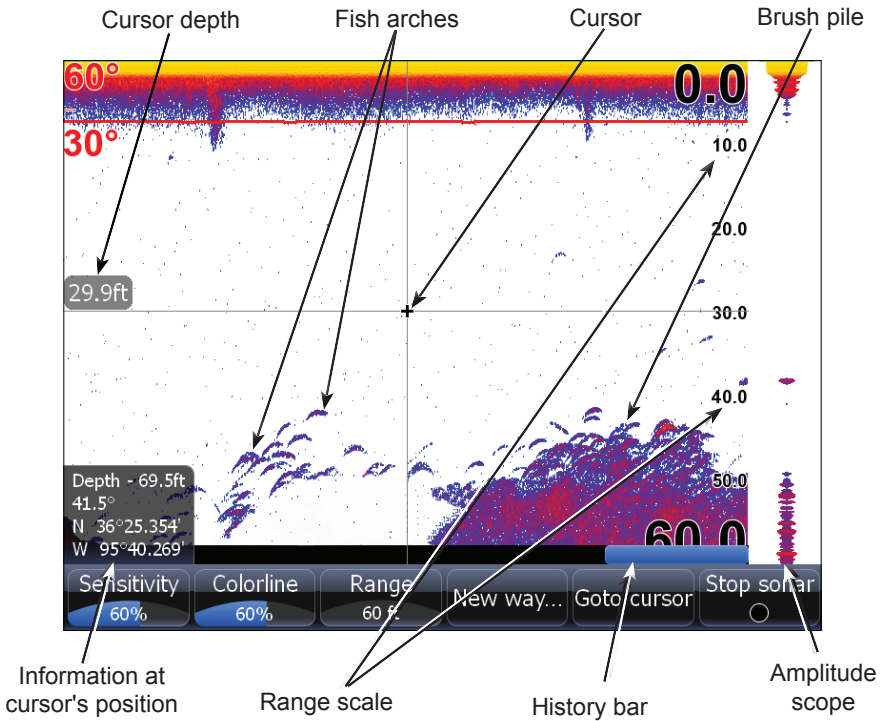


**NOTE:** Hold down the **PAGES** key to switch active panels when viewing a combo page.

**To add a Data or Gauge overlay to a page:**

1. To add/edit data overlay, select the desired page from the pages screen and press **MENU**.
2. Select *Edit data overlay* and press **ENTER**.
3. When the page appears press **ENTER** to select data or **MENU** to access the edit overlay menu.

## Sonar (Sonar units only)



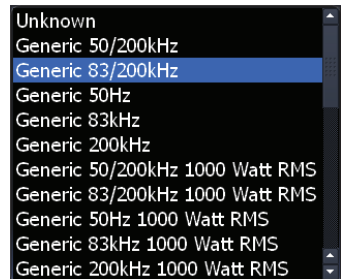
**Press the keypad to the left to scroll the Sonar page back to view previous sonar returns. When the cursor is onscreen the sonar does not show real time sonar returns. Press EXIT to return to normal operation.**

## Transducer Type

Selecting the proper transducer type from the sonar installation menu helps optimize HDS performance by enabling settings (temperature and frequency) and menu options specific to your transducer.

### To select a Transducer Type:

1. Press **MENU** twice.
2. Select *Sonar* and press **ENTER**.
3. Select *Installation* and press **ENTER**.
4. Select the desired transducer type and press **ENTER**.
5. Highlight *Save* and press **ENTER**.



*Transducer type menu*

## Fishing Modes

Enhances the performance of your unit by providing preset packages of sonar settings geared to specific fishing conditions.

Fishing Mode	Depth	Settings	Palette
General Use	≤1,000 ft	50% Ping speed	Bottom brown/ blue background
Shallow Water	≤ 60 ft	75% Ping speed	bottom brown/white background
Fresh Water	≤ 400 ft	50% Ping speed	bottom brown/white background
Deep Water	≥ 1,000 ft	50% Ping speed	Deep Blue
Slow Trolling	≤ 400 ft	50% Ping speed	Bottom brown/white background
Fast Trolling	≤ 400 ft	Lower chart speed	Bottom brown/white background
Clear Water	≤ 400 ft	50% Ping speed	Bottom brown/white background
Ice Fishing	≤ 400 ft	Settings optimized to reduce interference from other sonar units	

***\*Ping speed settings in the table are shown as a percentage of the maximum value. Ping speed values will look different on your unit.***

### Selecting a fishing mode:

1. Press **MENU** twice.
2. Select *Sonar* and press **ENTER**.
3. Highlight *Fishing Mode* and press **ENTER**.
4. Select the desired fishing mode and press **ENTER**.

## Sonar display settings/options

### To adjust Sensitivity:

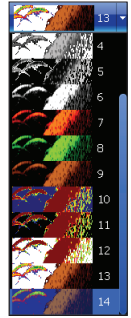
1. From the Sonar page press the **Sensitivity** softkey. The Sensitivity adjustment softkey will appear on screen. Use the left and right arrows on the keypad to make adjustments.

### To adjust Colorline:

1. From the Sonar page press the **Colorline** softkey. The Colorline adjustment softkey will appear on screen. Use the left and right arrows on the keypad to make adjustments.

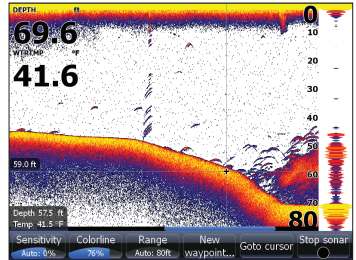
### To select a Sonar color palette:

1. From the Sonar page press the **MENU** key.
2. Select *Sonar Options* and press **ENTER**.
3. Select *Palette* and press **ENTER**.
4. Select the desired palette and press **ENTER**.



### To mark an underwater object with a waypoint:

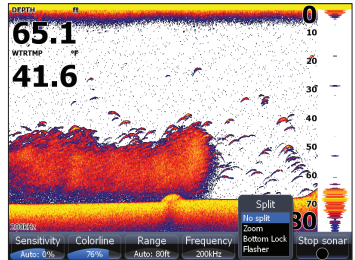
1. From the Sonar page, press the keypad to activate the cursor.
2. Use the keypad to center the cursor over the underwater object and press **ENTER**. A waypoint will be created at the cursor's position on the Sonar page.



### Sonar page Split screen options

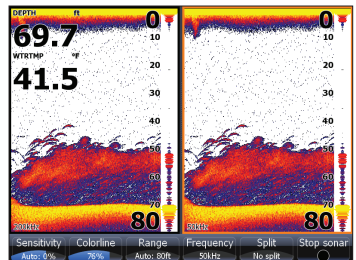
#### To select a split screen display:

1. From the Sonar page press the **Split/No Split** softkey.
2. Select the desired split screen option.



#### To view two sonar Frequencies:

1. Press **PAGES** to access the Pages screen.
2. From the Pages screen, select *Sonar + Sonar* and press **ENTER**.



## Waypoints

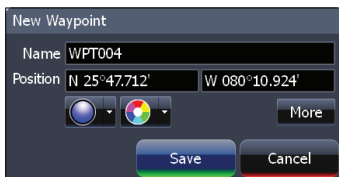
### To Create Waypoint at current position:

1. Press the **WPT/Find** key to create a waypoint at the your current position.

### To Create Waypoint at the Cursor position on Chart page:

1. Place the cursor on the Chart page where you want to set the waypoint, press the **New Waypoint** softkey. The New Waypoint menu will appear.

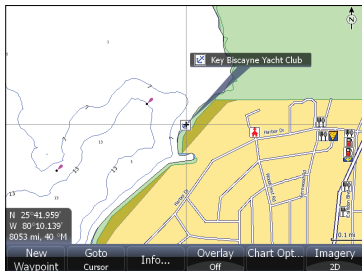
2. Select **Save** from the New Waypoint menu and press **ENTER**.



## Go To Cursor/Cancel Navigation

### To Navigate to a Point of Interest on the Chart page:

1. From the Chart page center the cursor over a point of interest, press the **Go to Cursor** softkey. The unit will create a straight line navigation course to the cursor position on the Chart page.



### To stop Navigating:

1. From the Chart page, press the **Cancel navigation** softkey.

## MMC/SD card slot

The MMC/SD card slot allows you to view mapping charts and save/view route, trail and sonar log data.

Make sure the MMC card slot door is always closed to prevent moisture from getting into the card slot compartment. To prevent damage to the card slots, use care when inserting cards in the card slots.

