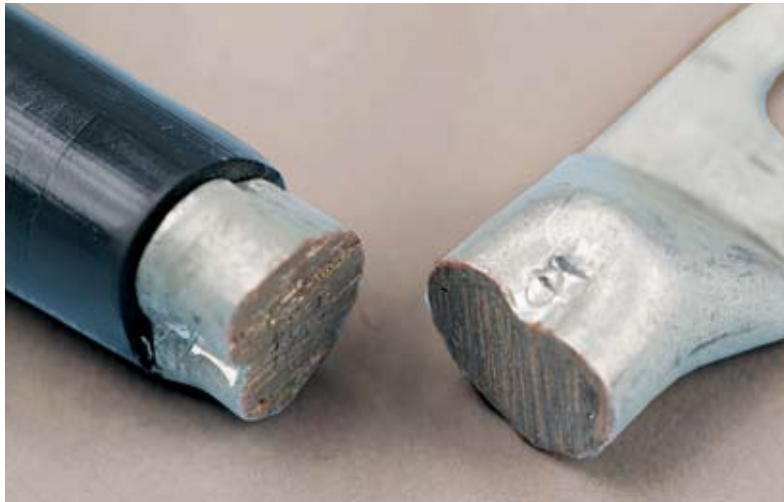


HEAVY DUTY LUGS



- **ANCOR** Marine Grade™ lugs are manufactured from heavy duty annealed tinned copper, providing for maximum current flow.
- 100% tin plated copper resists corrosion from salt and moisture.
- Seamless barrel design allows for maximum strength when crimped.
- Closed end design seals out moisture so cables stay dry and corrosion free.

HEAVY DUTY LUGS 100% Tinned Copper • UL 486A

Cable Range	Screw Size (in)	Screw Size (mm)	Qty/Pkg	Item Number
8 8 mm ²	10	4.8	2	252233
			25	242233
			100	244233
	1/4	6.4	2	252234
			25	242234
			100	244234
	5/16	7.9	2	252235
			25	242235
			100	244235
	3/8	9.5	2	252236
			25	242236
			100	244236
1/2	12.7	2	252237	
		10	242237	
		100	244237	
	5/16 & 3/8 & 9.5	7.9	1/1	252231
6 13 mm ²	10	4.8	2	252243
			25	242243
			100	244243
	1/4	6.4	2	252244
			25	242244
			100	244244
	5/16	7.9	2	252245
			25	242245
			100	244245
	3/8	9.5	2	252246
			25	242246
			100	244246
1/2	12.7	2	252247	
		10	242247	
		100	244247	
5/16 & 3/8 & 9.5	7.9	1/1	252241	
4 21 mm ²	10	4.8	2	252253
			25	242253
			100	244253
	1/4	6.4	2	252254
			25	242254
			100	244254

Cable Range	Screw Size (in)	Screw Size (mm)	Qty/Pkg	Item Number	
4 21 mm ²	5/16	7.9	2	252255	
			25	242255	
			100	244255	
	3/8	9.5	2	252256	
			25	242256	
			100	244256	
1/2	12.7	2	252257		
		10	242257		
		100	244257		
5/16 & 3/8 & 9.5	7.9	9.5	1/1	252251	
2 34 mm ²	1/4	6.4	2	252264	
			25	242264	
			100	244264	
	5/16	7.9	2	252265	
			25	242265	
			100	244265	
3/8	9.5	2	252266		
		25	242266		
		100	244266		
1/2	12.7	2	252267		
		10	242267		
		100	244267		
	5/16 & 3/8 & 9.5	7.9	9.5	1/1	252261
1 42 mm ²	1/4	6.4	2	252274	
			25	242274	
			100	244274	
	5/16	7.9	2	252275	
			25	242275	
			100	244275	
3/8	9.5	2	252276		
		25	242276		
		100	244276		
1/2	12.7	2	252277		
		10	242277		
		100	244277		
5/16 & 3/8 & 9.5	7.9	9.5	1/1	252271	



HEAVY DUTY LUGS

100% Tinned Copper • UL 486A

Cable Range	Screw Size (in)	(mm)	Qty/ Pkg	Item Number
1/0 53 mm ²	1/4	6.4	2	252284
			25	242284
			100	244284
	5/16	7.9	2	252285
			25	242285
			100	244285
	3/8	9.5	2	252286
			25	242286
			100	244286
1/2	12.7	2	252287	
		10	242287	
		100	244287	
5/16 & 3/8	7.9 & 9.5	1/1	252281	
2/0 68 mm ²	1/4	6.4	2	252294
			25	242294
			100	244294
	5/16	7.9	2	252295
			25	242295
			100	244295
	3/8	9.5	2	252296
			25	242296
			100	244296
	1/2	12.7	2	252297
			10	242297
			100	244297
	5/16 & 3/8	7.9 & 9.5	1/1	252291
3/0 85 mm ²	5/16	7.9	2	252715
			10	242715
	3/8	9.5	2	252716
			10	242716
	1/2	12.7	2	252717
			10	242717
4/0 107 mm ²	5/16	7.9	2	252725
			10	242725
			100	244725
	3/8	9.5	2	252726
			10	242726
			100	244726
	1/2	12.7	2	252727
			10	242727
			100	244727

CRIMPING FACTS:

Fine stranded cables, those with a large quantity of small-diameter strands, will improve a crimped joint's performance. Finer strands more readily fill the inside contour of a terminal as it is crimped. This even distribution of strands allows imposed loads to be distributed more evenly.

Air pockets or voids in a crimp joint with coarse stranding increases resistance and temperature which in turn leads to a faster rate of corrosion.

PROFESSIONAL LUG CRIMPER

Item Number: 702040

- Calibrated adjustment screw.
- Compound lever action prevents operator fatigue.
- Capacity: Crimps 8 - 4/0 AWG /8-103 mm² lugs and terminals.



ANTI-CORROSION RINGS

Item Number: 260405

- Chemically treated to prevent terminal corrosion caused by acid leaks.
- Fit top or side battery posts.
- Place one on each post.



BATTERY TERMINAL CLEANER

Item Number: 700103

- High-impact construction.
- Wide, easy grip.
- Excellent for hard-to-reach batteries.

