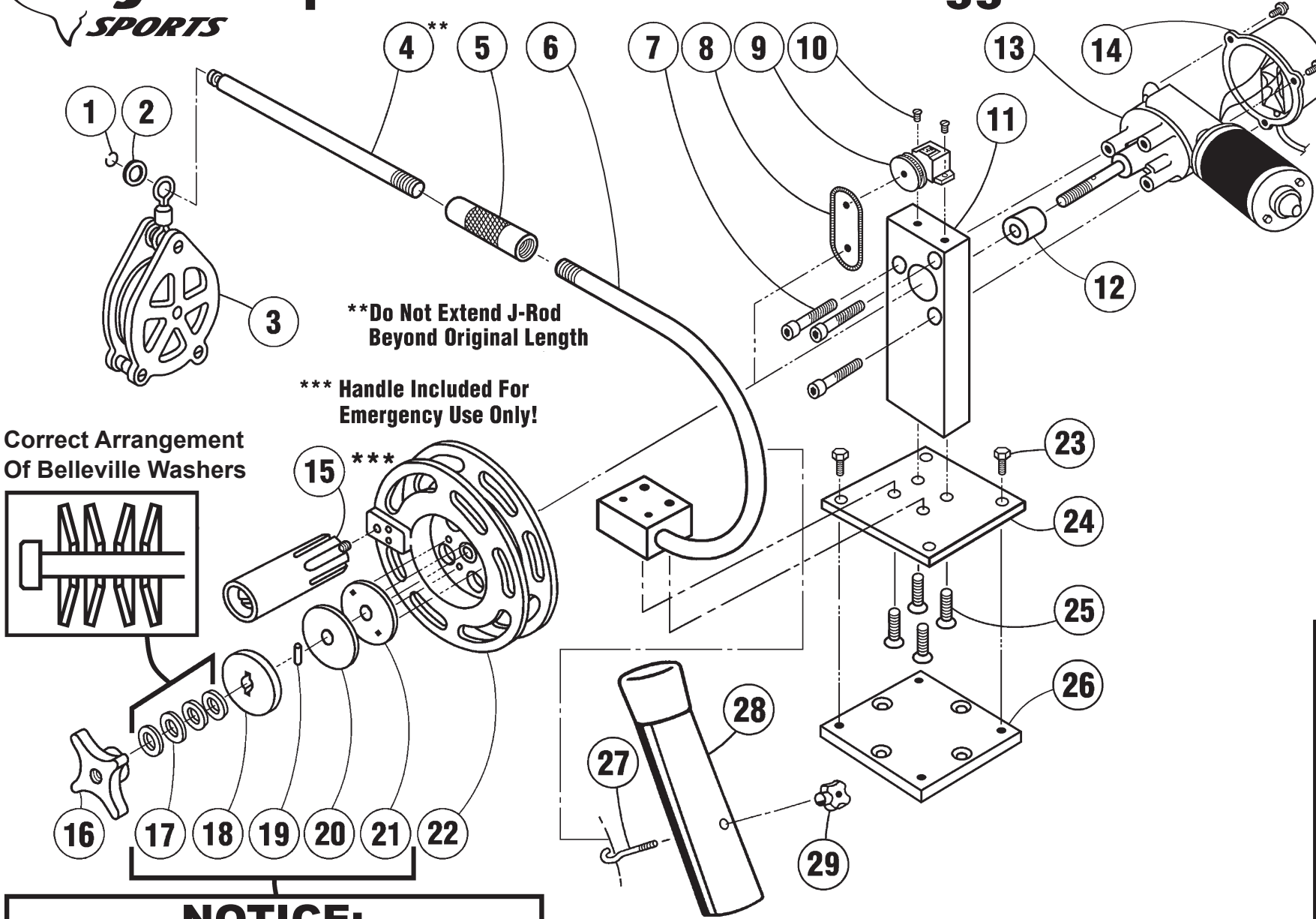




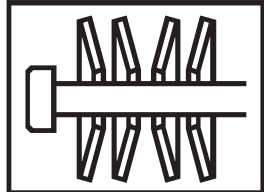
Sportsman Electric Downrigger



****Do Not Extend J-Rod Beyond Original Length**

***** Handle Included For Emergency Use Only!**

Correct Arrangement Of Belleville Washers



NOTICE:
This Improved Clutch System Replaces All Clutch Systems (With Disk And Clutch Plugs) Built Before April, 2013

Parts List ED02012L

Detail No.	Description	Qty.	Order By Part No.
1	Tip Retainer Ring	1	2181
2	Aluminum Tip Retainer	1	51043
3	5 Spoke Tip Assembly	1	BJ3049
4	10-1/2 in. End Rods	2	51123
5	Rod Collars	2	51044
6	5/8 in. Dia. J-Rod w/ Block	1	2012JROD/ASM
7	1/4-28 x 1-1/2 in. SH Cap Screws	3	2007
8	Large Counter Spring	1	2283
9	Counter w/ Med. Lg. Wheel	1	FC600JR86
10	Counter Screws	2	2014
11	Jr. Upright	1	51014
12	Hardened Spacer	1	51059
13	Motor Assembly	1	2205
14	Switch Box Assembly	1	51145ASM
15	Handle w/ Bolt & Sleeve**	1	HA101
16	Jr. Clutch Knob	1	51153
17	Jr. Belleville Washers	4	2232
18	Outer Clutch Disk	1	51094
19	Shaft Dowel Pin	1	2163
20	Graphite Pad	1	2308
21	Inner Clutch Disk	1	51098
22	Reel	1	51184
23	1/4-20 x 3/4 in. SS Bolts	4	2017
24	Universal Base Plate	1	51002
25	1/4-20 x 3/4 in. Flat Head Screws	4	2009
26	8 Hole Mounting Plate	1	51001
27	Mounting Hook	1	2501
28	Rod Holder & Cap	1	51045
29	Mounting Knob	1	51172

