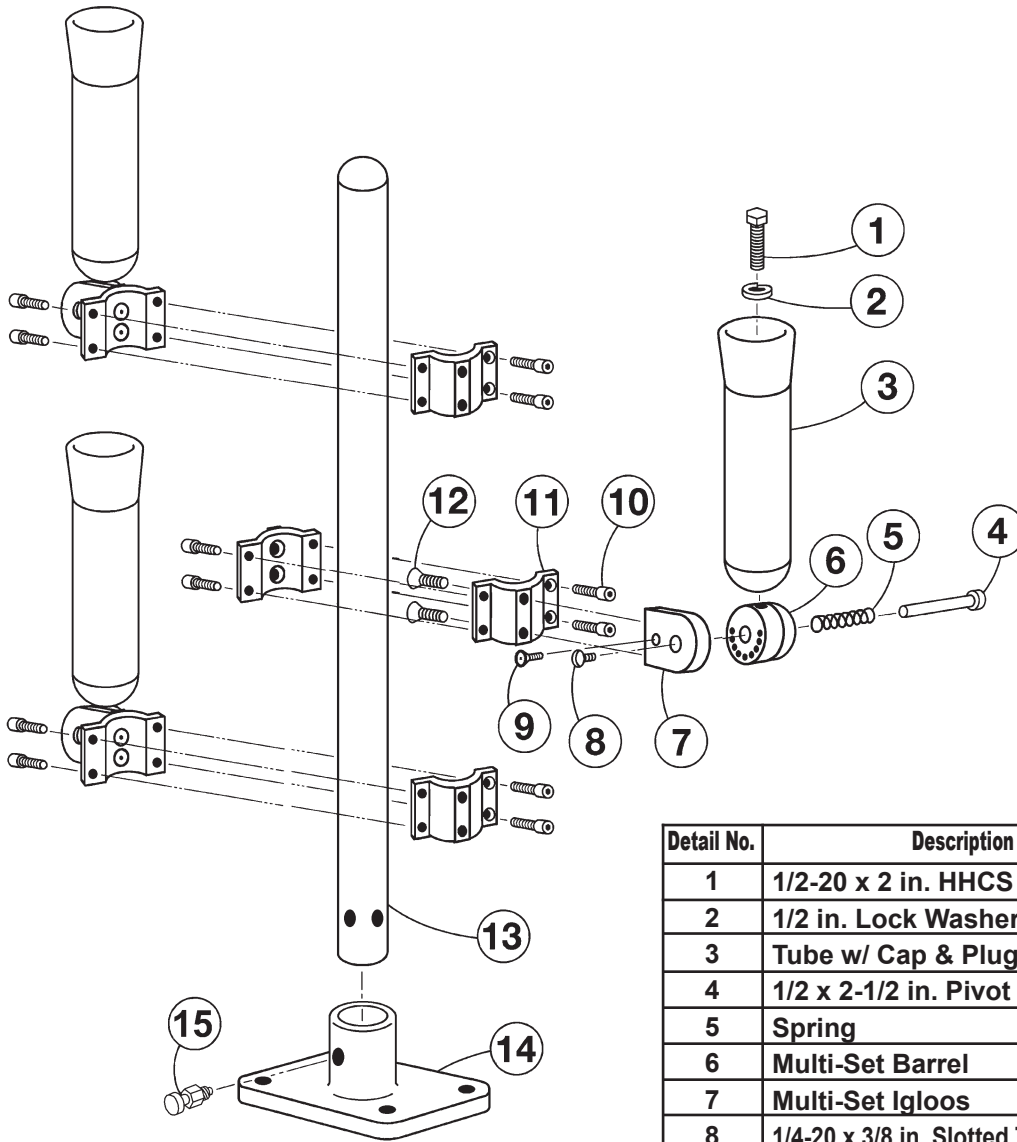




# Triple Multi-Set<sup>®</sup> Rod Holder Tree



## Parts List TR3

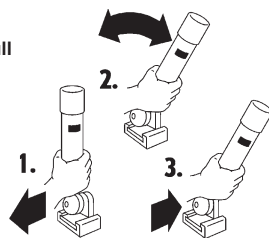
Detail No.	Description	Qty.	Order By Part No.
1	1/2-20 x 2 in. HHCS Bolt	3	2351
2	1/2 in. Lock Washer	3	2241
3	Tube w/ Cap & Plug	3	51221
4	1/2 x 2-1/2 in. Pivot Pin	3	55555
5	Spring	3	2600
6	Multi-Set Barrel	3	55551
7	Multi-Set Igloos	3	55550
8	1/4-20 x 3/8 in. Slotted Truss Hd Screws	3	2158
9	1/4-20 x 3/4 in. Flat Head Screws	3	2009
10	1/4-20 x 3/4 in. SHCS Screws	12	2002
11	Tree Clamps	6	55572
12	1/4-20 x 3/4 in. Flat Head Screws	6	2009
13	36 in. Tree Tube	1	51284
14	Mounting Base	1	58407
15	Latch Pin Assembly	1	51226

To order these two parts as an assembly, order: KT58407

Also, check the schematics in the Service Department on our web site at [www.bigjon.com](http://www.bigjon.com)

### Operating Instructions...

1. Hold the rod holder tube at the base and pull out from the locking pin.
2. Rotate the rod holder to any of the nine locking positions.
3. Reset the rod holder onto the locking pin.



### Mounting Instructions...

1. Make sure all wires below the mounting surface are clear of the area to be drilled.
2. Use the mounting base as a template to locate and mark holes.
3. Drill the holes in the mounting surface and backing plate together.
4. Bolt the mounting base to the surface and backing board and secure with a flat washer and nut.
5. Pull out the knob of the latch pin in the mounting base and insert the mast.

