

smartAIS[®]

It could save your life



SAFETY UNDERWAY
Collision Prevention



SAFETY AT ANCHOR
Anchor Watch



SAFETY FOR YOUR CREW
Man Overboard

INNOVATIVE MARINE AIS TECHNOLOGY

Vesper Marine is dedicated to safety on the water for sail, power and work boats. Our award-winning *smartAIS* transponders are designed by the Vesper Marine engineering team with an unwavering focus on quality, exceptional value and outstanding customer support.



NEW WatchMate Vision²
smartAIS transponder

vespermarine



WatchMate XB-8000
smartAIS transponder

vespermarine
smartAIS[®]
OFFICIAL SUPPLIER

VOLVO
OCEAN
RACE
ROUND THE WORLD

THE *smartAIS* ADVANTAGE

AIS transponders send and receive AIS data making vessels visible to others with AIS equipment. But *smartAIS* transponders from Vesper Marine have an active safety system that proactively alerts you when you have potential collision situations, it plots your anchor position and alerts you if your anchor drags and continuously watches for a man overboard and triggers an alarm on your transponder for quick retrieval.



SAFETY UNDERWAY Collision prevention

smartAIS combines GPS data such as position, course and speed with AIS data and smart alert logic to continually determine safety implications and alert you. It computes the closest point of approach and time until the closest point of approach and proactively triggers alarms to warn you of vessels posing a threat. Its intelligent filtering prioritizes and shows only those targets which have a collision risk. In case of a potential collision, an audible alarm sounds on the transponder and your connected mobile devices.

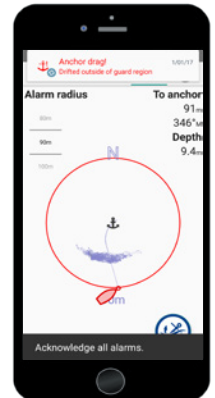
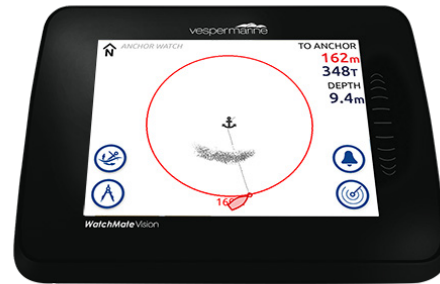


smartAIS transponders are WiFi enabled allowing you to manage your transponder remotely using a smartphone, tablet or smartwatch. Receive *smartAIS* alarms, monitor navigation information, change transponder settings and more from anywhere on board.



SAFETY AT ANCHOR Anchor Watch

smartAIS plots your position in relation to the anchor and marks your positions over time to determine if you are dragging. The alarm sounds if you drag outside a circular zone configured around your anchor position. On Vision², you can also set customized alarms for change in wind speed, wind direction or water depth at anchor.



SAFETY FOR YOUR CREW Man Overboard

smartAIS silently and continuously watches for a man overboard (MOB) and sounds the alarm as soon as it detects one. Equip your crew members with any manufacturer's AIS MOB device and when your crew activate it, see their continuously updated location, bearing and range for easy retrieval. *smartAIS* on Vision² can associate the devices to names of your crew members. When an alarm is triggered, it displays the name of your crew member which is quicker and easier to recognize rather than a string of MMSI numbers.

EXCLUSIVE VESPER MARINE ADVANTAGES



BUILT-IN WIFI

Manage your transponder using your smartphone, tablet and smartwatch



HIGHER RESOLUTION GPS

Fast 5Hz 50 channel GPS receiver



NMEA 2000 GATEWAY

Translates NMEA 2000 navigation data and routes it over WiFi, USB or NMEA 0183



UNIVERSAL COMPATIBILITY

Compatible with all AIS enabled MFDs and marine equipment



LOW POWER CONSUMPTION

Always on, always visible, always watching



SECURE PORTS

Galvanically isolated ports protect your equipment from high current damage



WATERPROOF

IPx7 rating - can be mounted anywhere



UPGRADABLE AIS PLATFORM

Get the latest transponder features automatically using your smartphone or tablet



WATCHMATE APP

Monitor navigation data, AIS and GPS, manage alarms from your smartphone or tablet



DECKWATCH APP

Monitor navigation data, AIS and GPS, view alarms, manage settings from your smartwatch

NEW *WatchMate Vision²* smartAIS transponder

The world's first touchscreen *smartAIS* transponder is here, packed with the latest, most advanced features. Its large 5.7" bright color touchscreen is highly responsive and easy to use. The screen comes with worldwide coastal outlines for better situational awareness. Its intelligent filtering prioritizes and shows only those targets which have a collision risk. *Vision²* has a built-in GPS antenna with an optional external antenna when a view of the sky is not available. Use it as a standalone transponder or integrate it with your network of chart plotters, MFDs and NMEA instruments.



WatchMate XB-8000 smartAIS transponder

The world's first blackbox *smartAIS* transponder has built-in safety alarms and WiFi. View AIS data and navigation information on your tablet, smartphone, smartwatch or computer, but it is continuously watching and alerting you even when your screen is off. It comes with an alarm and silence switch that can be mounted anywhere on board. Easy to integrate with your network of chart plotters, MFDs and NMEA instruments, Vesper Marine transponders are compatible with all brands of marine equipment and AIS enabled MFDs including Raymarine, Garmin, Furuno, Simrad and many more. XB-8000 has been awarded Practical Sailor Gear of the Year and Vancouver Boat Show Best in Show in 2017.



ALWAYS
ON
ALWAYS
VISIBLE
ALWAYS
WATCHING



New WatchMate Vision²
smartAIS TRANSPONDER



XB-8000
smartAIS TRANSPONDER



WatchMate 850
AIS TRANSPONDER



XB-6000
AIS TRANSPONDER



SP-160
AIS VHF SPLITTER

THIS IS A FANTASTIC PIECE OF KIT. THE MENUS ARE SIMPLE AND EASY TO USE. EVEN WHILE IN A HEAVY SEAWAY, IT'S INCREDIBLY SMART ABOUT CONSERVING POWER AND BEST OF ALL IT HAS THE SMARTEST ALARMS I'VE EVER SEEN ON AN AIS DEVICE.

Daniel Collins, USA

THE WATCHMATE VISION IS A TRULY MAGNIFICENT INSTRUMENT WITH INTELLIGENT IN-BUILT SOFTWARE. ONE MAY COMPARE ITS FEATURES TO SOME SORT OF 'ABS FOR A CAR'. NOTHING LESS! IT PROVED TO BE A TRUE 'ANTI-COLLISION' DEVICE. I CONSIDER MYSELF A HAPPY OWNER AND FOR THE RECORD, I HAVE NEVER GIVEN SUCH FEEDBACK TO ANYONE YET.

Arie Vermeiden, France

vespermarine

WatchMate
smartAIS Transponders

45 Sale St, Freemans Bay, Auckland, New Zealand
www.vespermarine.com | +64 9 950 4848