

# ECHOMAP™ UHD2 CHARTPLOTTERS



## PRODUCT OVERVIEW:

The ECHOMAP™ UHD2 touchscreen with keyed-assist chartplotter knows the water better than a local. Its bright, sunlight-readable display offers improved detail and clarity. See clear, sharp fish arches with Garmin traditional sonar. ClearVü™ and SideVü™ scanning sonars feature vivid color palettes for clear, high-contrast views all around your boat. ECHOMAP UHD2 also supports LiveScope™ sonar systems. Navigate the waters with built-in Garmin Navionics+™ cartography, which comes with a 1-year subscription to daily chart updates. Built-in Wi-Fi® connectivity lets you wirelessly share sonar, waypoints and routes with another ECHOMAP UHD2 chartplotter. Wherever you drop your line, get improved position accuracy, particularly in areas where signals are reflected or weak, with multi-band GPS. You can also pair with the free all-in-one ActiveCaptain® app on your compatible smartphone for access to the OneChart™ feature, software updates and more. The chartplotter supports NMEA 2000® networks to connect your compatible autopilots, digital switching, music and more to view all on one screen.





# ECHOMAP™ UHD2 CHARTPLOTTERS

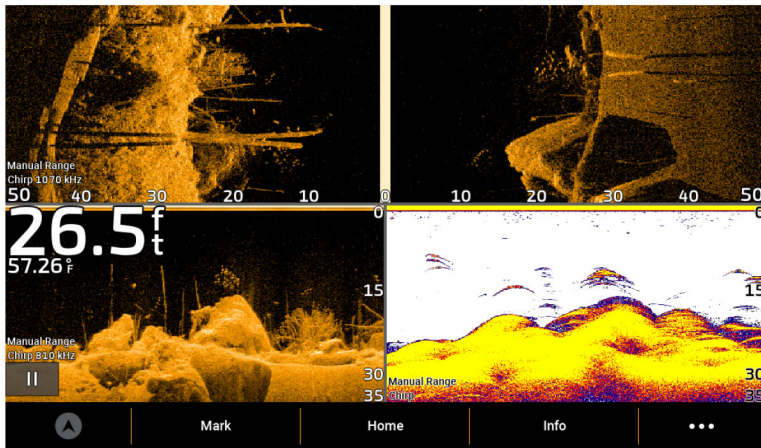
## KEY FEATURES:

|            |                                     |   |
|------------|-------------------------------------|---|
|            | <b>DISPLAY</b>                      | Easy-to-use touchscreen with keyed assist with a bright, sunlight-readable display  |
| <b>NEW</b> | <b>IMPROVED SCREEN RESOLUTION</b>   | 9" units now feature increased screen resolution (1024 x 600) when compared to previous models  |
| <b>NEW</b> | <b>ULTRA HIGH- DEFINITION SONAR</b> | See below your boat with Garmin traditional, ClearVü™ and SideVü™ scanning sonars with vivid color palettes. Compatible with LiveScope™ live scanning sonar   |
| <b>NEW</b> | <b>WIRELESS NETWORKING</b>          | Built-in Wi-Fi® connectivity lets you wirelessly share sonar, waypoints and routes with another ECHOMAP UHD2 chartplotter   |
| <b>NEW</b> | <b>BUILT-IN MAPPING</b>             | Select chartplotters come with built-in Garmin Navionics+ mapping with an included one year subscription to daily updates. Auto Guidance+ technology <sup>1</sup> available to download via the Active Captain app for chartplotters with built in maps |
|            | <b>MULTI-BAND GPS</b>               | Includes multi-band GPS, which utilizes multiple frequencies for improved position accuracy, particularly in areas where signals are reflected or weak  |
|            | <b>EXPAND YOUR SYSTEM</b>           | Supports wired NMEA 2000® network connectivity  |
|            | <b>ACTIVECAPTAIN® APP</b>           | Pair with the free all-in-one ActiveCaptain® app on your compatible smartphone for access to the OneChart™ feature, software updates and more   |
|            | <b>TROLLING MOTOR INTEGRATION</b>   | Wirelessly connects to your Force® trolling motor to create and follow routes, navigate to waypoints, control speed, check battery life and more  |

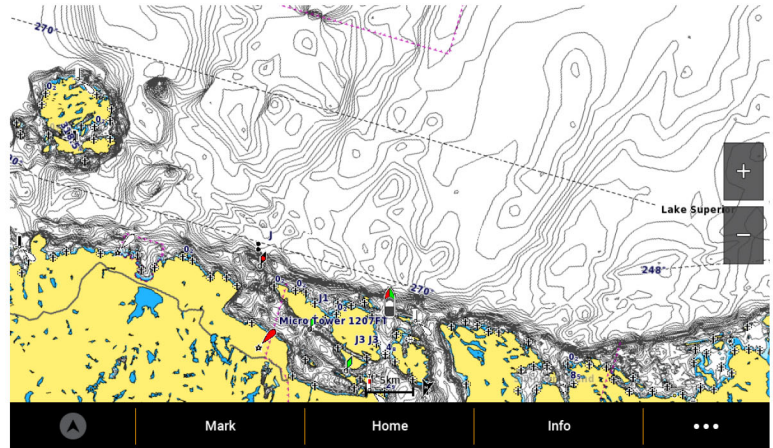
<sup>1</sup>Auto Guidance+ is for planning purposes only and does not replace safe navigation operations

## SCREENSHOTS:

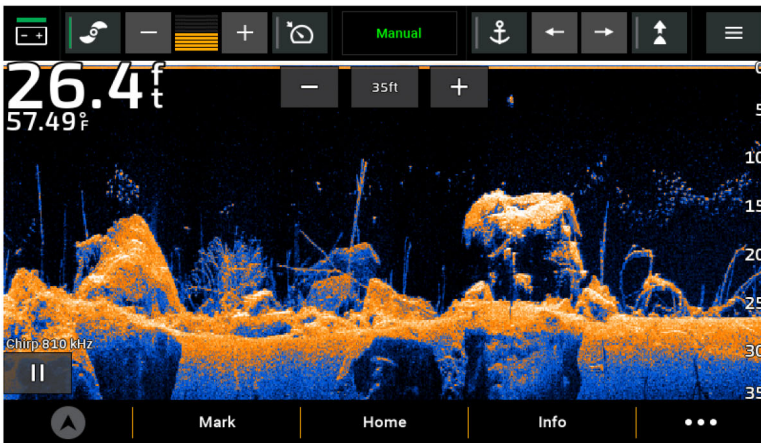
Ultra High-Definition Sonar



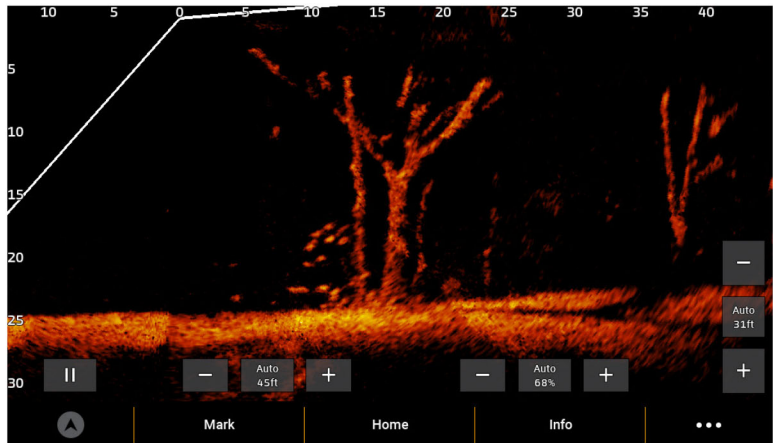
Garmin Navionics+ Mapping



Force Trolling Motor Compatible



LiveScope Compatible



# ECHOMAP™ UHD2 CHARTPLOTTERS

## PRODUCT SPECIFICATIONS:

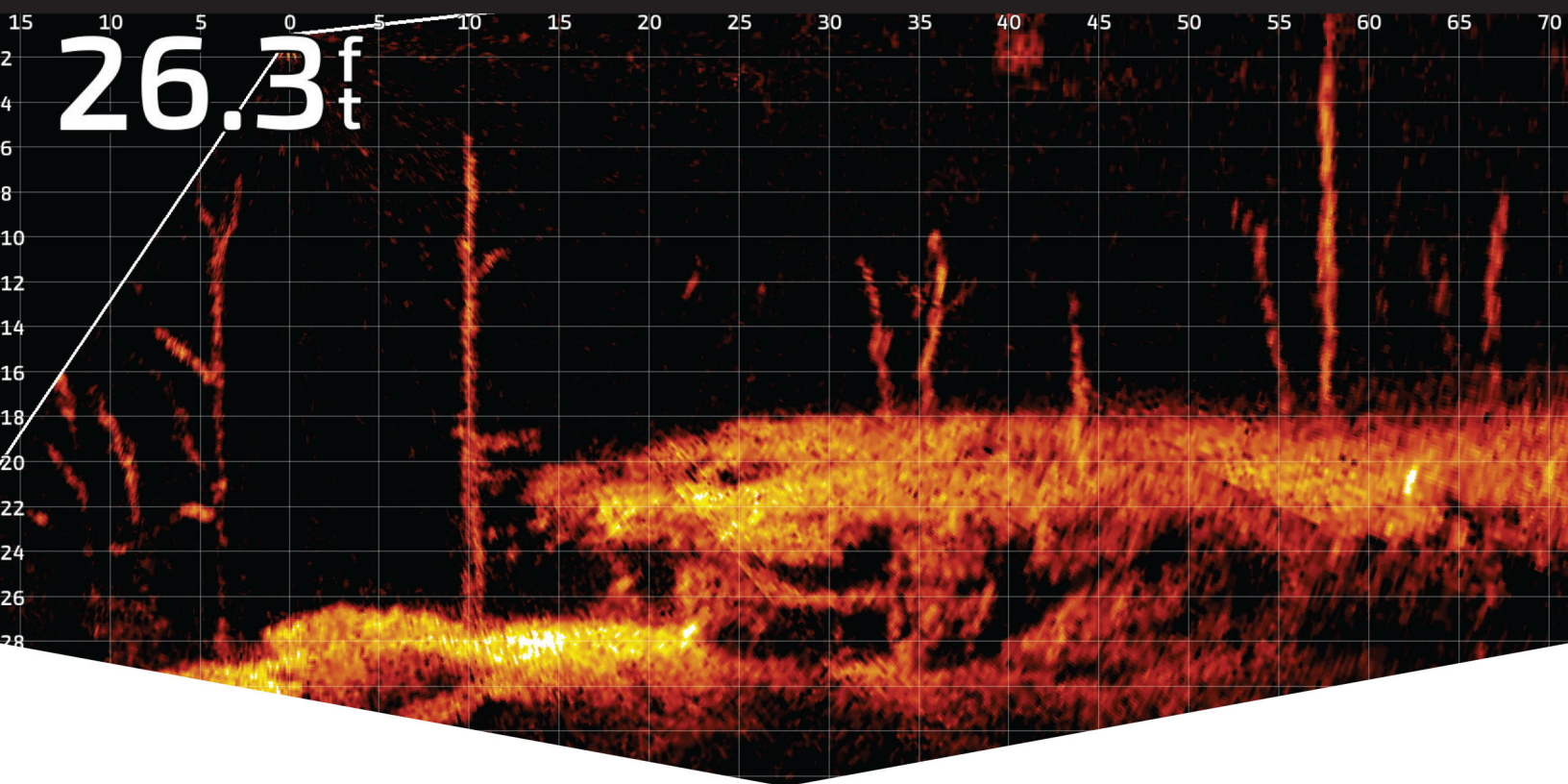
|   | ECHOMAP™ UHD2 6"   | ECHOMAP™ UHD2 7"   | ECHOMAP™ UHD2 9"   |
|---|--|--|--|
| Physical dimensions (W x H x D)               | 8.1" x 5.2" x 2.6" (20.6 x 13.1 x 6.7 cm)  | 8.6" x 5.6" x 3.2" (21.8 x 14.2 x 8.1 cm)  | 10.4" x 6.5" x 3.2" (26.4 x 16.6 x 8.0cm)  |
| Display size (W x H, Diagonal)                | 5.4" x 3.1", 6.2" (13.8 x 7.8, 15.7 cm)  | 6.1" x 3.4", 7.0" (15.5 x 8.7, 17.8 cm)  | 7.8" x 4.5", 9.0" (19.8 x 11.5, 22.9 cm)   |
| Resolution                                    | 800 x 480 pixels   | 800 x 480 pixels   | 1024 x 600 pixels  |
| Weight  | 1.8 lbs (0.8 kg)   | 2.2 lbs (1.0 kg)   | 2.9 lbs (1.3 kg)   |
| Water rating                                  | IPX7   | IPX7   | IPX7   |
| Built-in receiver                             | Yes  | Yes  | Yes  |
| Built-in receiver Hz                          | 10 Hz  | 10 Hz  | 10 Hz  |
| BlueChart® g3 and Bluechart® g3 Vision        | No   | No   | No   |
| Garmin LakeVü™ g3 and Garmin LakeVü™ g3 Ultra | No   | No   | No   |
| Garmin Navionics+™                            | Yes  | Yes  | Yes  |
| Auto Guidance technology                      | Yes, with supported mapping  | Yes, with supported mapping  | Yes, with supported mapping  |
| Card slot                                     | 1 microSD card; 32 GB maximum size   | 1 microSD card; 32 GB maximum size   | 1 microSD card; 32 GB maximum size   |
| Waypoints                                     | 5,000  | 5,000  | 5,000  |
| Track points                                  | 50,000   | 50,000   | 50,000   |
| Tracks  | 50 saved tracks  | 50 saved tracks  | 50 saved tracks  |
| Routes  | 100  | 100  | 100  |
| Sailing features                              | Yes  | Yes  | Yes  |
| Built-in sonar                                | Yes  | Yes  | Yes  |
| Traditional                                   | Yes  | Yes  | Yes  |
| ClearVü™ and SideVü™ sonar                    | Yes  | Yes  | Yes  |
| Sonar frequencies                             | Traditional: Single Channel CHIRP, 50/77/83/200 kHz, L, M, H CHIRP<br>Garmin ClearVü and SideVü: 260/455/800/1000/1200 kHz | Traditional: Single Channel CHIRP, 50/77/83/200 kHz, L, M, H CHIRP<br>Garmin ClearVü and SideVü: 260/455/800/1000/1200 kHz | Traditional: Single Channel CHIRP, 50/77/83/200 kHz, L, M, H CHIRP<br>Garmin ClearVü and SideVü: 260/455/800/1000/1200 kHz |
| 4-pin transducer ports                        | No   | No   | No   |
| Wi-Fi® connectivity (local)                   | Yes  | Yes  | Yes  |

## PACKAGING SPECIFICATIONS:

|   | ECHOMAP UHD2<br>6" chartplotter without<br>transducer | ECHOMAP UHD2<br>6" chartplotter with<br>transducer | ECHOMAP UHD2<br>7" chartplotter without<br>transducer | ECHOMAP UHD2<br>7" chartplotter with<br>transducer | ECHOMAP UHD2<br>9" chartplotter without<br>transducer | ECHOMAP UHD2<br>9" chartplotter with<br>transducer |
|---|---|--|---|--|---|--|
| Gift box dimensions:<br>(W x H x D)         | 11.4" x 7.9" x 8.2"<br>(28.9 x 20.1 x 20.8 cm)        | 13.7 x 7.9" x 8.2"<br>(34.8 x 20.1 x 20.8 cm)      | 11.4" x 7.9" x 8.2"<br>(28.9 x 20.1 x 20.8 cm)        | 13.7 x 7.9" x 8.2"<br>(34.8 x 20.1 x 20.8 cm)      | 13.3 x 7.9" x 10.1"<br>(33.8 x 20.1 x 52.8 cm)        | 13.7 x 7.9" x 10.1"<br>(34.8 x 20.1 x 52.8 cm)     |
| Gift box weight:                            | 3.9 lbs (1.8 kg)                                      | 5.8 lbs (2.6 kg)                                   | 4.3 lbs (1.9 kg)                                      | 6.2 lbs (2.8 kg)                                   | 5.3 lbs (2.4 kg)                                      | 7.9 lbs (3.6 kg)                                   |
| Master carton<br>dimensions:<br>(W x H x D) | 24.6" x 17.3" x 12.3"<br>(62.5 x 43.9 x 31.2 cm)      | 24.6" x 17.3" x 14.6"<br>(62.5 x 43.9 x 37.1 cm)   | 24.6" x 17.3" x 12.3"<br>(62.5 x 43.9 x 31.2 cm)      | 24.6" x 17.3" x 14.6"<br>(62.5 x 43.9 x 37.1 cm)   | 21.1" x 13.9" x 17.2"<br>(53.6 x 35.3 x 43.7 cm)      | 21.1" x 15.8" x 17.2"<br>(53.6 x 40.1 x 43.7 cm)   |
| Master carton weight:                       | 23.4 lbs (10.6 kg)                                    | 34.8 lbs (15.8 kg)                                 | 25.8 lbs (11.7 kg)                                    | 37.2 lbs (16.9 kg)                                 | 21.2 lbs (9.6 kg)                                     | 31.6 lbs (14.3 kg)                                 |
| Master carton quantity:                     | 6   |  |   |  | 4   |  |



# ▶ LiveScope™ Plus system



## PRODUCT OVERVIEW:

The best of the best just got better with the LiveScope Plus System. It's the latest in LiveScope technology, offering improved resolution, reduced noise, clearer images and better target separation. Now it's easier than ever to see structure, bait and fish swimming around your boat in real time. Adjust the transducer to fit where you fish; Forward mode shows what's out in front of your boat and slightly below, Down mode gives you a view of what's directly below, and Perspective mode is great for a top-down view. The view automatically changes on your compatible Garmin chartplotter<sup>1</sup> screen. Attitude heading reference system stabilization keeps your sonar view steady, even in rough conditions. LiveScope Plus includes a trolling motor shaft and barrel mounts plus Perspective Mode Mount.



# LiveScope™ Plus system

## KEY FEATURES:

|            |   |   |
|------------|---|---|
| <b>NEW</b> | <b>HIGH RESOLUTION</b>                  | 35% improved target separation over existing LiveScope™ System.   |
| <b>NEW</b> | <b>IMAGE SHARPNESS</b>                  | Brilliantly clear sonar returns, minimal noise and on-screen artifacts (less “ghost tree”).               |
|            | <b>EASY UPGRADE</b>                     | The new transducer can be used with an existing LiveScope System black box (GLS™ 10) for an easy upgrade. |
|            | <b>VIVID COLOR</b>                      | Compatible with the vivid color palettes for enhanced detail and clarity.                                 |
|            | <b>FORCE® TROLLING MOTOR COMPATIBLE</b> | Sized to fit the Force trolling motor as well as other leading trolling motors.                           |
| <b>NEW</b> | <b>PERSPECTIVE MODE MOUNT</b>           | Use all three modes with the included Perspective Mode Mount.   |

## PRODUCT COMPARISON:

LiveScope Plus



LiveScope



|  |  |  |
|--|--|--|
| Transmit power                             | 500 watts                                | 500 watts                                |
| Frequencies supported                      | 530–1,100 kHz                            | 530–1,100 kHz                            |
| Max depth forward range                    | 200'                                     | 200'                                     |
| Target separation (at 100' (30.5 m) range) | 14" (35.6 cm)                            | 22" (55.9 cm)                            |
| Beamwidth                                  | 20–135 degrees                           | 20–135 degrees                           |
| Arrays                                     | 3  | 3  |
| Dimensions                                 | 6.4" x 2.9" x 1.7"<br>(162 x 75 x 43 mm) | 5.6" x 3.8" x 1.7"<br>(136 x 96 x 43 mm) |
| Perspective Mode Mount included            | Yes                                      | No                                       |
| AHRS                                       | Yes                                      | Yes                                      |
| Install options                            | Trolling motor/transom                   | Trolling motor/transom/thru-hull         |
| Transom mount included                     | No                                       | Yes                                      |
| Transducer cable length                    | 20'                                      | 20'                                      |

## SCREENS

