

ECHOMAP™ UHD2 CHARTPLOTTERS



PRODUCT OVERVIEW:

The ECHOMAP™ UHD2 touchscreen with keyed-assist chartplotter knows the water better than a local. Its bright, sunlight-readable display offers improved detail and clarity. See clear, sharp fish arches with Garmin traditional sonar. ClearVü™ and SideVü™ scanning sonars feature vivid color palettes for clear, high-contrast views all around your boat. ECHOMAP UHD2 also supports LiveScope™ sonar systems. Navigate the waters with built-in Garmin Navionics+™ cartography, which comes with a 1-year subscription to daily chart updates. Built-in Wi-Fi® connectivity lets you wirelessly share sonar, waypoints and routes with another ECHOMAP UHD2 chartplotter. Wherever you drop your line, get improved position accuracy, particularly in areas where signals are reflected or weak, with multi-band GPS. You can also pair with the free all-in-one ActiveCaptain® app on your compatible smartphone for access to the OneChart™ feature, software updates and more. The chartplotter supports NMEA 2000® networks to connect your compatible autopilots, digital switching, music and more to view all on one screen.



ECHOMAP™ UHD2 CHARTPLOTTERS

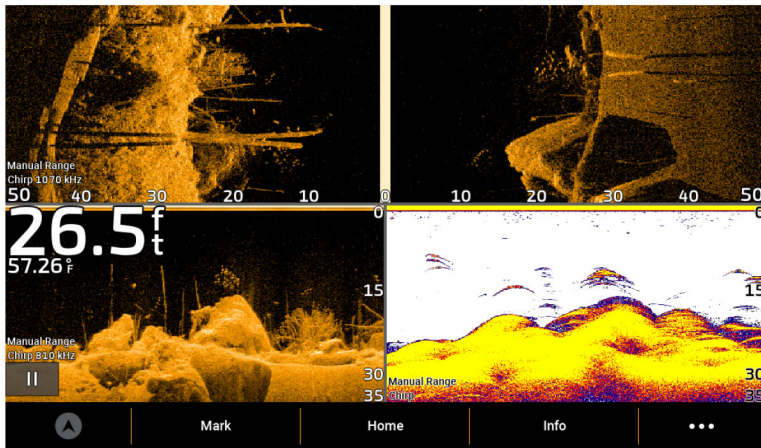
KEY FEATURES:

	DISPLAY	Easy-to-use touchscreen with keyed assist with a bright, sunlight-readable display
NEW	IMPROVED SCREEN RESOLUTION	9" units now feature increased screen resolution (1024 x 600) when compared to previous models
NEW	ULTRA HIGH- DEFINITION SONAR	See below your boat with Garmin traditional, ClearVü™ and SideVü™ scanning sonars with vivid color palettes. Compatible with LiveScope™ live scanning sonar
NEW	WIRELESS NETWORKING	Built-in Wi-Fi® connectivity lets you wirelessly share sonar, waypoints and routes with another ECHOMAP UHD2 chartplotter
NEW	BUILT-IN MAPPING	Select chartplotters come with built-in Garmin Navionics+ mapping with an included one year subscription to daily updates. Auto Guidance+ technology ¹ available to download via the Active Captain app for chartplotters with built in maps
	MULTI-BAND GPS	Includes multi-band GPS, which utilizes multiple frequencies for improved position accuracy, particularly in areas where signals are reflected or weak
	EXPAND YOUR SYSTEM	Supports wired NMEA 2000® network connectivity
	ACTIVECAPTAIN® APP	Pair with the free all-in-one ActiveCaptain® app on your compatible smartphone for access to the OneChart™ feature, software updates and more
	TROLLING MOTOR INTEGRATION	Wirelessly connects to your Force® trolling motor to create and follow routes, navigate to waypoints, control speed, check battery life and more

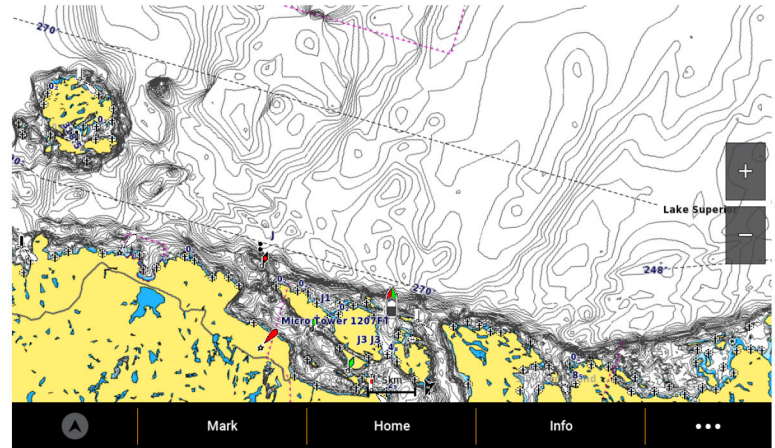
¹Auto Guidance+ is for planning purposes only and does not replace safe navigation operations

SCREENSHOTS:

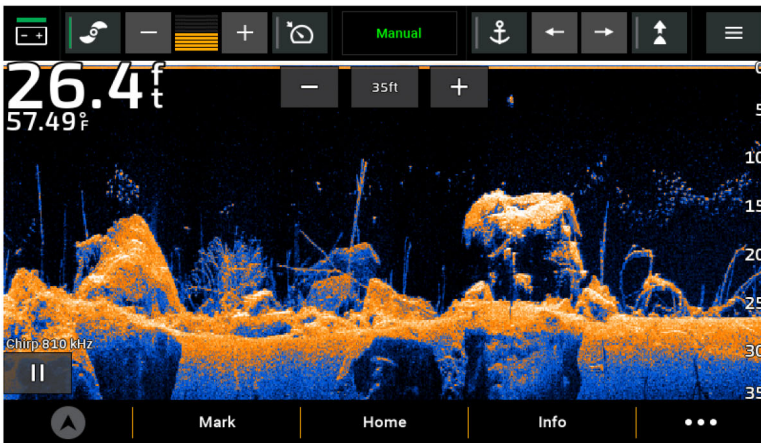
Ultra High-Definition Sonar



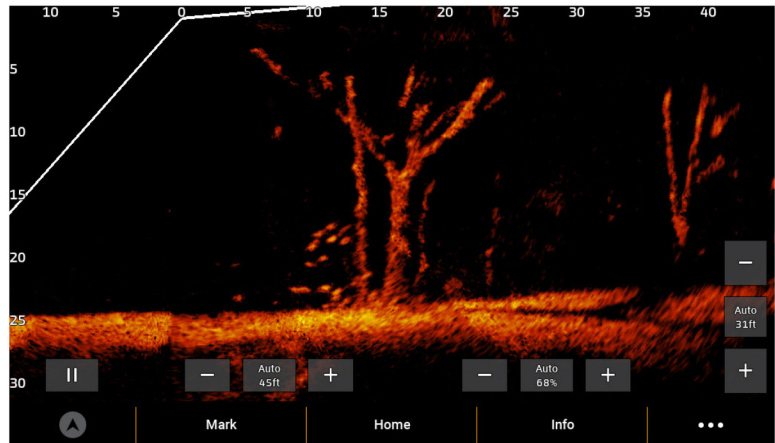
Garmin Navionics+ Mapping



Force Trolling Motor Compatible



LiveScope Compatible



ECHOMAP™ UHD2 CHARTPLOTTERS

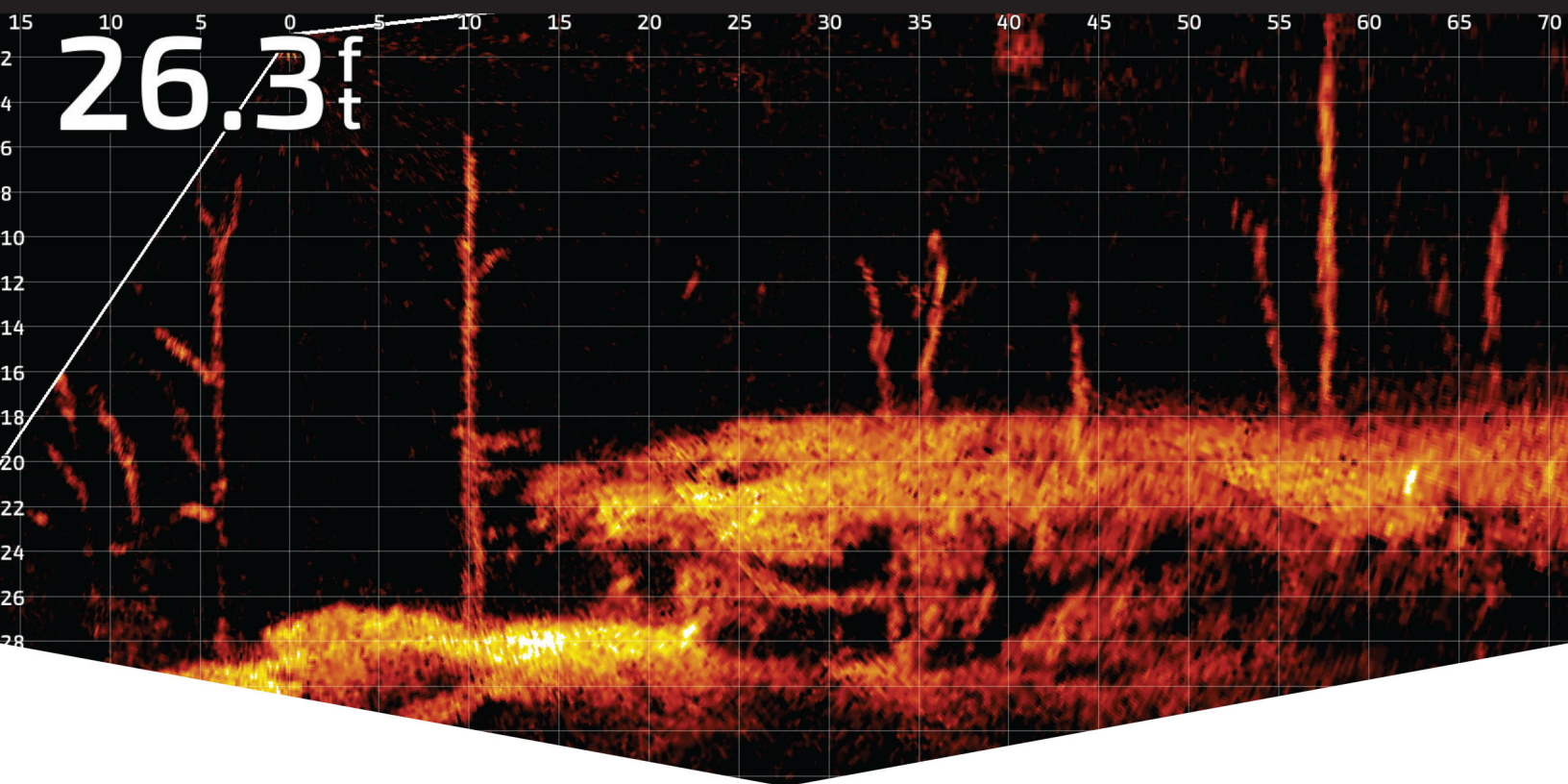
PRODUCT SPECIFICATIONS:

	ECHOMAP™ UHD2 6"	ECHOMAP™ UHD2 7"	ECHOMAP™ UHD2 9"
Physical dimensions (W x H x D)	8.1" x 5.2" x 2.6" (20.6 x 13.1 x 6.7 cm)	8.6" x 5.6" x 3.2" (21.8 x 14.2 x 8.1 cm)	10.4" x 6.5" x 3.2" (26.4 x 16.6 x 8.0cm)
Display size (W x H, Diagonal)	5.4" x 3.1", 6.2" (13.8 x 7.8, 15.7 cm)	6.1" x 3.4", 7.0" (15.5 x 8.7, 17.8 cm)	7.8" x 4.5", 9.0" (19.8 x 11.5, 22.9 cm)
Resolution	800 x 480 pixels	800 x 480 pixels	1024 x 600 pixels
Weight	1.8 lbs (0.8 kg)	2.2 lbs (1.0 kg)	2.9 lbs (1.3 kg)
Water rating	IPX7	IPX7	IPX7
Built-in receiver	Yes	Yes	Yes
Built-in receiver Hz	10 Hz	10 Hz	10 Hz
BlueChart® g3 and Bluechart® g3 Vision	No	No	No
Garmin LakeVü™ g3 and Garmin LakeVü™ g3 Ultra	No	No	No
Garmin Navionics+™	Yes	Yes	Yes
Auto Guidance technology	Yes, with supported mapping	Yes, with supported mapping	Yes, with supported mapping
Card slot	1 microSD card; 32 GB maximum size	1 microSD card; 32 GB maximum size	1 microSD card; 32 GB maximum size
Waypoints	5,000	5,000	5,000
Track points	50,000	50,000	50,000
Tracks	50 saved tracks	50 saved tracks	50 saved tracks
Routes	100	100	100
Sailing features	Yes	Yes	Yes
Built-in sonar	Yes	Yes	Yes
Traditional	Yes	Yes	Yes
ClearVü™ and SideVü™ sonar	Yes	Yes	Yes
Sonar frequencies	Traditional: Single Channel CHIRP, 50/77/83/200 kHz, L, M, H CHIRP Garmin ClearVü and SideVü: 260/455/800/1000/1200 kHz	Traditional: Single Channel CHIRP, 50/77/83/200 kHz, L, M, H CHIRP Garmin ClearVü and SideVü: 260/455/800/1000/1200 kHz	Traditional: Single Channel CHIRP, 50/77/83/200 kHz, L, M, H CHIRP Garmin ClearVü and SideVü: 260/455/800/1000/1200 kHz
4-pin transducer ports	No	No	No
Wi-Fi® connectivity (local)	Yes	Yes	Yes

PACKAGING SPECIFICATIONS:

	ECHOMAP UHD2 6" chartplotter without transducer	ECHOMAP UHD2 6" chartplotter with transducer	ECHOMAP UHD2 7" chartplotter without transducer	ECHOMAP UHD2 7" chartplotter with transducer	ECHOMAP UHD2 9" chartplotter without transducer	ECHOMAP UHD2 9" chartplotter with transducer
Gift box dimensions: (W x H x D)	11.4" x 7.9" x 8.2" (28.9 x 20.1 x 20.8 cm)	13.7 x 7.9" x 8.2" (34.8 x 20.1 x 20.8 cm)	11.4" x 7.9" x 8.2" (28.9 x 20.1 x 20.8 cm)	13.7 x 7.9" x 8.2" (34.8 x 20.1 x 20.8 cm)	13.3 x 7.9" x 10.1" (33.8 x 20.1 x 52.8 cm)	13.7 x 7.9" x 10.1" (34.8 x 20.1 x 52.8 cm)
Gift box weight:	3.9 lbs (1.8 kg)	5.8 lbs (2.6 kg)	4.3 lbs (1.9 kg)	6.2 lbs (2.8 kg)	5.3 lbs (2.4 kg)	7.9 lbs (3.6 kg)
Master carton dimensions: (W x H x D)	24.6" x 17.3" x 12.3" (62.5 x 43.9 x 31.2 cm)	24.6" x 17.3" x 14.6" (62.5 x 43.9 x 37.1 cm)	24.6" x 17.3" x 12.3" (62.5 x 43.9 x 31.2 cm)	24.6" x 17.3" x 14.6" (62.5 x 43.9 x 37.1 cm)	21.1" x 13.9" x 17.2" (53.6 x 35.3 x 43.7 cm)	21.1" x 15.8" x 17.2" (53.6 x 40.1 x 43.7 cm)
Master carton weight:	23.4 lbs (10.6 kg)	34.8 lbs (15.8 kg)	25.8 lbs (11.7 kg)	37.2 lbs (16.9 kg)	21.2 lbs (9.6 kg)	31.6 lbs (14.3 kg)
Master carton quantity:	6				4	

▶ LiveScope™ Plus system



PRODUCT OVERVIEW:

The best of the best just got better with the LiveScope Plus System. It's the latest in LiveScope technology, offering improved resolution, reduced noise, clearer images and better target separation. Now it's easier than ever to see structure, bait and fish swimming around your boat in real time. Adjust the transducer to fit where you fish; Forward mode shows what's out in front of your boat and slightly below, Down mode gives you a view of what's directly below, and Perspective mode is great for a top-down view. The view automatically changes on your compatible Garmin chartplotter¹ screen. Attitude heading reference system stabilization keeps your sonar view steady, even in rough conditions. LiveScope Plus includes a trolling motor shaft and barrel mounts plus Perspective Mode Mount.



LiveScope™ Plus system

KEY FEATURES:

NEW	HIGH RESOLUTION	35% improved target separation over existing LiveScope™ System.
NEW	IMAGE SHARPNESS	Brilliantly clear sonar returns, minimal noise and on-screen artifacts (less “ghost tree”).
	EASY UPGRADE	The new transducer can be used with an existing LiveScope System black box (GLS™ 10) for an easy upgrade.
	VIVID COLOR	Compatible with the vivid color palettes for enhanced detail and clarity.
	FORCE® TROLLING MOTOR COMPATIBLE	Sized to fit the Force trolling motor as well as other leading trolling motors.
NEW	PERSPECTIVE MODE MOUNT	Use all three modes with the included Perspective Mode Mount.

PRODUCT COMPARISON:



	LiveScope Plus	LiveScope
Transmit power	500 watts	500 watts
Frequencies supported	530–1,100 kHz	530–1,100 kHz
Max depth forward range	200'	200'
Target separation (at 100' (30.5 m) range)	14" (35.6 cm)	22" (55.9 cm)
Beamwidth	20–135 degrees	20–135 degrees
Arrays	3	3
Dimensions	6.4" x 2.9" x 1.7" (162 x 75 x 43 mm)	5.6" x 3.8" x 1.7" (136 x 96 x 43 mm)
Perspective Mode Mount included	Yes	No
AHRS	Yes	Yes
Install options	Trolling motor/transom	Trolling motor/transom/thru-hull
Transom mount included	No	Yes
Transducer cable length	20'	20'

SCREENS

