

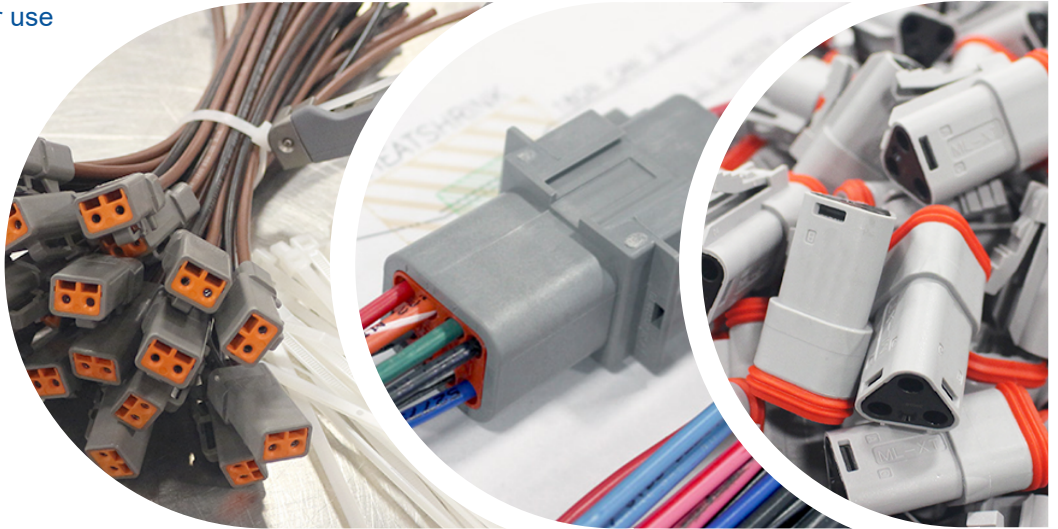
## Deutsch Connectors - DTP



Deutsch DTP series connectors are built for use in the most demanding power requirement applications. Each circuit is capable of 25 amp continuous service.

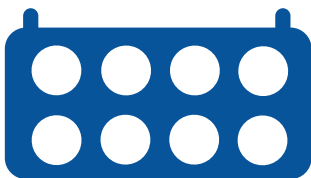
Their thermoplastic housing offers reliability, durability, and longevity in the toughest marine conditions.

Pacer offers repair packs, wedgelock kits, pins and sockets, and even the tools needed to get the job done right.







### Construction

Built from quality plastic that has been reinforced with glass.

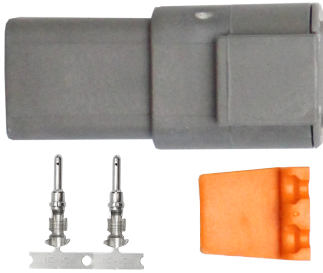


### Features

-  For use with size 12 Pins & Sockets
-  For use with 14-12 AWG wire
-  25 Amp Continuous Power
-  Easy to install

### Benefits

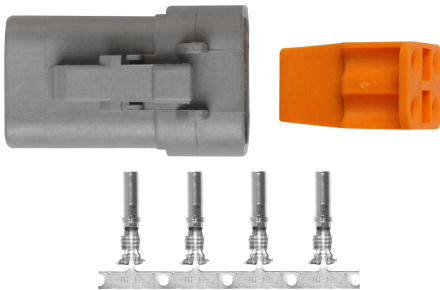
-  Field Serviceable
-  Durable in tough conditions
-  Long-lasting
-  Flame Resistant
-  Oil Resistant



TDTP04F-2RS

**DTP RECEPTACLE REPAIR PACKS (14-12 AWG APPLICATIONS)**

# OF CAVITIES	PART NUMBER RECEPTACLES	CONTENTS
2	TDTP04F-2RP	(1) 2 POS. RECEPTACLE, (1) 2 POS. WEDGE LOCK, (2) STAMPED AND FORMED PINS
4	TDTP04F-4RP	(1) 4 POS. RECEPTACLE, (1) 4 POS. WEDGE LOCK, (4) STAMPED AND FORMED PINS



TDTP06F-4RS

**DTP PLUG REPAIR PACKS (14-12 AWG APPLICATIONS)**

# OF CAVITIES	PART NUMBER PLUGS	CONTENTS
2	TDTP06F-2RS	(1) 2 POS. PLUG, (1) 2 POS. WEDGE LOCK, (3) STAMPED AND FORMED CONTACTS
4	TDTP06F-4RS	(1) 4 POS. PLUG, (1) 4 POS. WEDGE LOCK, (5) STAMPED AND FORMED CONTACTS

**ADDITIONAL FEATURES:** \*Economical harsh environment protection \*Protects against corrosion and lengthens the serviceable life of wire \*Common contact system  
 \*Increased socket-terminal performance \*Hand insertable/removable contacts \*Redundant silicone seals \*High-performance molded shells

**COMPLIANCES:** \*UL recognized \*RoHS \*IP 6K9K \*J1939/11, J1939/13 and J1939/15

**CHARACTERISTICS:** \*Oper. Temp.: -55°C to 125°C \*Durability: No defects after 100 cycles of engagement/disengagement



**DEUTSCH TOOLS**

**PART NUMBER**

**DESCRIPTION**

Wedglock Removal Tool

VT-DT/RT

DEUTSCH Wedglock removal tool



- Works with DTM, DT, and DTP series connectors
- One side is a flat head screwdriver, one side carries a straight hook
- Use to quickly and easily remove or secure wedgelocks as well as releasing the locking fingers of the connector

