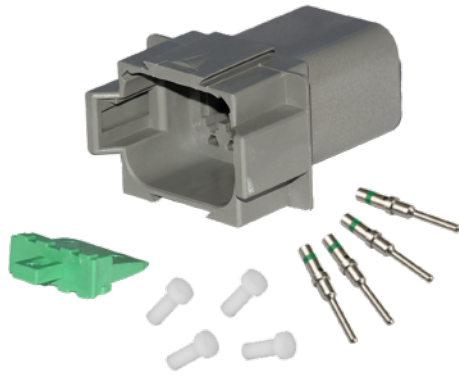




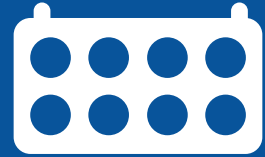
# Pacer

## DT Connectors

Deutsch DT series connectors are built for use in the harshest environmental conditions. Their thermoplastic housing offers rugged durability and reliability. As environmentally sealed connectors, the DT series is built for some of the toughest conditions out there. The DT series was designed so that each size 16 contact (20-14 AWG) can handle 13 amps of continuous power. This is the standard size in the Deutsch family of connectors. Some of the benefits of the DT series include; field serviceability, rugged design, and longevity. Deutsch DT series connectors are ideal for the harsh marine environment.



Pacer is a Proud Member of:



## Construction

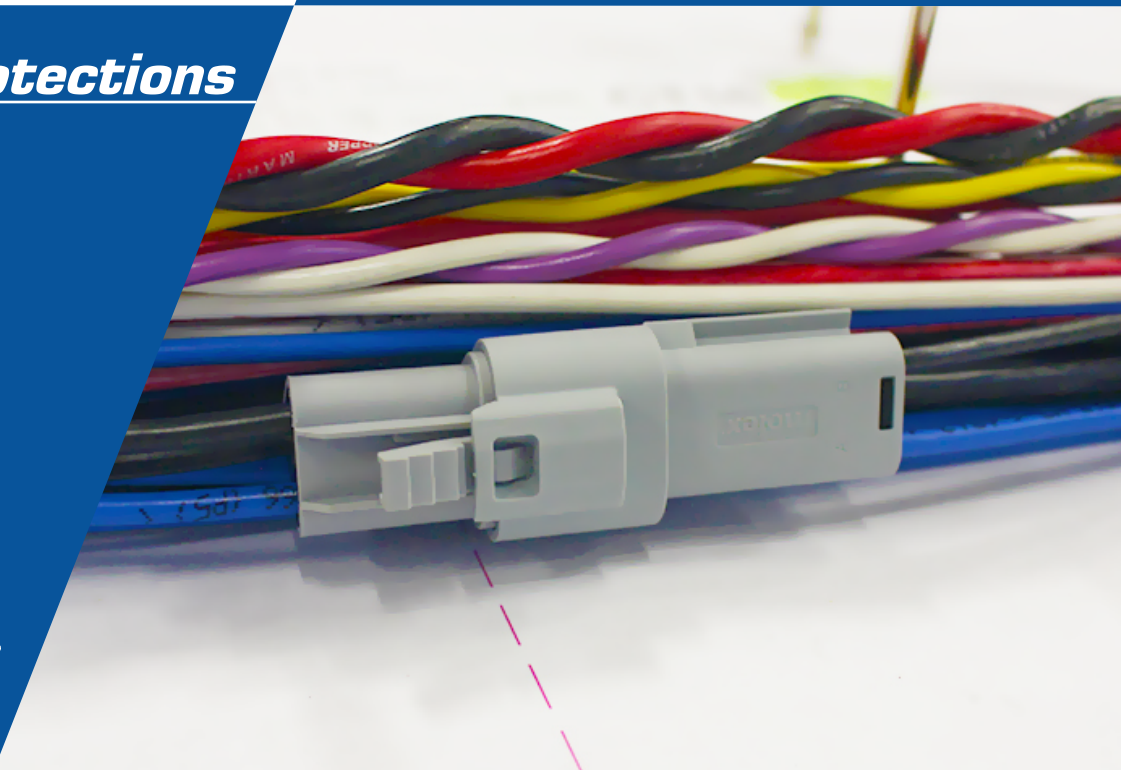
Built from quality plastic reinforced with glass fiber

## Features of DT

- For use with size 16 Contacts
- For use with 20-14 AWG Wire
- 13 Amp Continuous Power
- Easy to Install
- Cavity Plugs to Seal
- Specialized Tools for Accuracy

## Benefits & Protections

- Field Serviceable
- Durable
- Long-Lasting
- Flame Resistance
- Oil Resistance



## DT RECEPTACLE REPAIR PACKS (14 AWG APPLICATIONS)

# OF CAVITIES	PART NUMBER - RECEPTACLES	CONTENTS
2	TDT04-2RP	(1) 2 POS. RECEPTACLE, (1) 2 POS. WEDGE LOCK, (3) PINS
3	TDT04-3RP	(1) 3 POS. RECEPTACLE, (1) 3 POS. WEDGE LOCK, (4) PINS, (1) CAVITY PLUG
4	TDT04-4RP	(1) 4 POS. RECEPTACLE, (1) 4 POS. WEDGE LOCK, (5) PINS, (2) CAVITY PLUGS
6	TDT04-6RP	(1) 6 POS. RECEPTACLE, (1) 6 POS. WEDGE LOCK, (8) PINS, (3) CAVITY PLUGS
8	TDT04-8RP	(1) 8 POS. RECEPTACLE, (1) 8 POS. WEDGE LOCK, (10) PINS, (4) CAVITY PLUGS

## DT PLUG REPAIR PACKS (14 AWG APPLICATIONS)

# OF CAVITIES	PART NUMBER - RECEPTACLES	CONTENTS
2	TDT06-2RS	(1) 2 POS. PLUG, (1) 2 POS. WEDGE LOCK, (3) SOCKETS
3	TDT06-3RS	(1) 3 POS. PLUG, (1) 3 POS. WEDGE LOCK, (4) SOCKETS, (1) CAVITY PLUG
4	TDT06-4RS	(1) 4 POS. PLUG, (1) 4 POS. WEDGE LOCK, (5) SOCKETS, (2) CAVITY PLUGS
6	TDT06-6RS	(1) 6 POS. PLUG, (1) 6 POS. WEDGE LOCK, (8) SOCKETS, (3) CAVITY PLUGS
8	TDT06-8RS	(1) 8 POS. PLUG, (1) 8 POS. WEDGE LOCK, (10) SOCKETS, (4) CAVITY PLUGS

## DT KITS (20-14 AWG)

NO. OF CAVITIES	RECEPTACLE (PIN)	PLUG (SOCKET)	PACKAGE SIZE
2	TDT04-2P-10	TDT06-2S-10	10
3	TDT04-3P-10	TDT06-3S-10	10
4	TDT04-4P-10	TDT06-4S-10	10
6	TDT04-6P-5	TDT06-6S-5	5
8	TDT04-8P-5	TDT06-8S-5	5

*DTM kits and DTP kits contain Ladd Distribution (Deutsch) connectors. DT kits contain Molex connectors.*

*Kits contain housing & wedgelock only. Pins and sockets sold separately.*



**DT Series** connectors are designed for 20-14 wire gauge applications. The DT series offers electrical designers the ability to use multiple size 16 contacts (20-14 AWG), each with 13 amp continuous capacity, within a single shell. Pacer's DT repair kits use the larger size 16 contacts (Deutsch Pin P/N 0460-215-16141, Socket P/N 0462-209-16141) for applications using 14 AWG wire.