



Pacer

Cable Ties & Mounts

Cable ties are the most versatile product in use today for bundling and harnessing. Cable ties have a flexible body with teeth that engage with the pawl in the head of the tie to form a ratchet. It is this ratcheting effect which ensures that as you pull the tail, the cable tie tightens. What should they be used on? They are perfect for wire, cable, hoses, etc. Cable ties are easy to use, quick to install and are low cost. Pacer carries standard and mounting ring cable ties in natural and black. Use cable ties with adhesive backed mounts or screw down mounts to secure bundles to a surface.



Construction

High quality Nylon 6.6 or
AISI 316 stainless stain

Benefits



Versatile



Easy to use



Self-locking



Long lasting



Low thread force



RoHS and CE compliant

Pacer is a Proud Member of:



Applications



Commercial Usage



Residential Usage




Industrial Usage




Marine Usage



STANDARD CABLE TIES

| | STANDARD PKG PART NUMBER | | | BULK PKG PART NUMBER | | | LENGTH (IN.) | BUNDLE DIA (IN.) | MAX TENSILE STRENGTH LB(TYPE) |
|---|-----------------------------|-----------|-------------|-------------------------|-----------|-------------|-----------------|------------------------|--|
| | NATURAL | BLACK | PKG SIZE | NATURAL | BLACK | PKG SIZE | | | |
|  | CT1M-C | CT1M-C0 | 100 | CT1M-M | CT1M-M0 | 1000 | 3.9 | 0.87 | 18 (M) |
| | CT1.5I-C | CT1.5I-C0 | 100 | CT1.5I-M | CT1.5I-M0 | 1000 | 5.6 | 1.38 | 40 (I) |
| | CT2S-C | CT2S-C0 | 100 | CT2S-M | CT2S-M0 | 1000 | 7.4 | 1.88 | 50 (S) |
| | CT3S-C | CT3S-C0 | 100 | CT3S-M | CT3S-M0 | 1000 | 11.5 | 3.00 | 50 (S) |
| | CT3H-L | CT3H-L0 | 50 | CT3H-TL | CT3H-TL0 | 250 | 11.4 | 3.00 | 120 (LH) |
| | CT4S-C | CT4S-C0 | 100 | CT4S-M | CT4S-M0 | 1000 | 14.5 | 4.00 | 50 (S) |
| | CT4H-L | CT4H-L0 | 50 | CT4H-TL | CT4H-TL0 | 250 | 14.5 | 4.00 | 120 (LH) |
| | CT7LH-L | CT7LH-L0 | 50 | - | - | - | 24.7 | 7.00 | 120 (LH) |
| | CT9LH-L | CT9LH-L0 | 50 | - | - | - | 30.5 | 9.00 | 120 (LH) |

CABLE TIES WITH MOUNTING RING


| | | | | | | | | | |
|--|------------|-------------|-----|------------|-------------|------|------|------|----------|
|  | CTMR1M-C | CTMR1M-C0 | 100 | CTMR1M-M | CTMR1M-M0 | 1000 | 4.3 | 0.75 | 18 (M) |
| | CTMR1.5I-C | CTMR1.5I-C0 | 100 | CTMR1.5I-M | CTMR1.5I-M0 | 1000 | 6.1 | 1.25 | 40 (I) |
| | CTMR2S-C | CTMR2S-C0 | 100 | - | CTMR2S-M0 | 1000 | 7.9 | 1.84 | 50 (S) |
| | CTMR4S-C | CTMR4S-C0 | 100 | CTMR4S-M | CTMR4S-M0 | 1000 | 15.0 | 4.00 | 50 (S) |
| | CTMR4H-L | CTMR4H-L0 | 50 | CTMR4H-TL | CTMR4H-TL0 | 250 | 15.1 | 4.00 | 120 (LH) |

FEATURES: *For indoor use *Curved tip is easy to pick up off flat surfaces & allows faster initial threading to speed installation


COMPLIANCES: *UL Compliant *Flammability UL 94V-2 *RoHS & CE compliant

CHARACTERISTICS: *6/6 Nylon (Nat. & UV res. Blk) *Max. Cont. Temp. 185°F (85°C) *Min. Cont. Temp. -20°F (85°C)

DOME TOP CABLE TIES

| | STANDARD PKG PART NUMBER | | | BULK PKG PART NUMBER | | | LENGTH (IN.) | BUNDLE DIA (IN.) | MAX TENSILE STRENGTH LB(TYPE) |
|---|-----------------------------|------------|-------------|-------------------------|------------|-------------|-----------------|------------------------|--|
| | NATURAL | BLACK | PKG SIZE | NATURAL | BLACK | PKG SIZE | | | |
|  | CTB1M-C | CTB1M-C0 | 100 | CTB1M-M | CTB1M-M0 | 1000 | 4.0 | 0.90 | 18 (M) |
| | CTB1.5I-C | CTB1.5I-C0 | 100 | CTB1.5I-M | CTB1.5I-M0 | 1000 | 6.1 | 1.50 | 40 (I) |
| | CTB2S-C | CTB2S-C0 | 100 | CTB2S-M | CTB2S-M0 | 1000 | 8.0 | 2.00 | 50 (S) |
| | CTB3S-C | CTB3S-C0 | 100 | CTB3S-M | CTB3S-M0 | 1000 | 12.0 | 3.00 | 50 (S) |
| | CTB4S-C | CTB4S-C0 | 100 | CTB4S-M | CTB4S-M0 | 1000 | 15.1 | 4.00 | 50 (S) |
| | CTB4LH-L | CTB4LH-L0 | 50 | CTB4LH-TL | CTB4LH-TL0 | 250 | 14.9 | 4.00 | 120 (LH) |
| | CTB7LH-L | CTB7LH-L0 | 50 | - | - | - | 24.4 | 7.00 | 120 (LH) |
| | CTB9LH-L | CTB9LH-L0 | 50 | - | - | - | 30.7 | 9.00 | 120 (LH) |

DOME TOP CABLE TIES WITH MOUNTING RING

| | | | | | | | | | |
|---|---|-------------|-----|-----------|--------------|------|------|------|----------|
|  | - | - | - | - | CTBMR1M-M0 | 1000 | 4.0 | 0.90 | 18 (M) |
| | - | - | - | - | CTBMR1.5I-M0 | 1000 | 6.1 | 1.50 | 40 (I) |
| | - | CTBMR2S-C0 | 100 | CTBMR2S-D | - | 500 | 8.0 | 2.00 | 50 (S) |
| | - | CTBMR4S-C0 | 100 | CTBMR4S-D | - | 500 | 15.1 | 4.00 | 50 (S) |
| | - | CTBMR4LH-L0 | 50 | - | CTBMR4LH-TL0 | 250 | 15.1 | 4.00 | 120 (LH) |

FEATURES: *Stainless steel locking barb provides consistent performance, reliability, and infinite adjustability through the entire bundle. *High strength low tread force *Dome-top head features unique patented design with round smooth edges.

*Maintains the same compliances and characteristics as standard cable ties.

LOOP TENSILE STR.

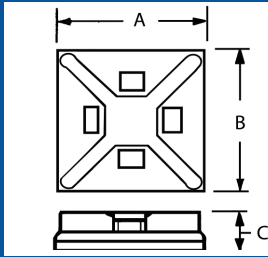
M = Mini (18 Lbs.)

I = Intermediate (40 Lbs.)

S = Standard (50 Lbs.)

LH = Heavy Duty (120 Lbs.)

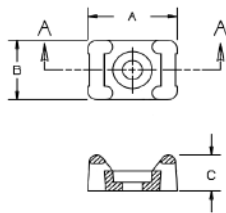
ADHESIVE BACKED MOUNTS



| PART NUMBER NATURAL | PART NUMBER BLACK | A (IN.) | B (IN.) | C (IN.) | USE WITH CABLE TIE TYPE | MAX STATIC LOAD LB | PACKAGE SIZE |
|------------------------|----------------------|------------|------------|------------|----------------------------|-----------------------|-----------------|
| CABM.5 | - | 0.50 | 0.50 | 0.16 | M | 0.13 | 100 |
| CABM.75 | CABM.75BK | 0.75 | 0.75 | 0.18 | M, I | 0.30 | 100 |
| CABM1 | CABM1BK | 1.00 | 1.00 | 0.16 | M, I, S | 0.50 | 100 |

FEATURES: *Superior adhesive for long term reliability *4-way cable tie entry *Available in multiple sizes to match application load *Fast and easy to use, applies to any clean, dry, smooth, grease-free surface
*Available in white or UV resistant black

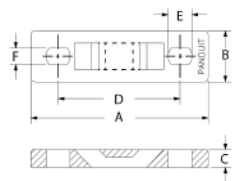
SCREW DOWN MOUNTS



| PART NUMBER NATURAL | PART NUMBER BLACK | A (IN.) | B (IN.) | C (IN.) | USE WITH CABLE TIE TYPE | MOUNT METHOD | PACKAGE SIZE |
|------------------------|----------------------|------------|------------|------------|----------------------------|-----------------|-----------------|
| CTM1S6 | CTM1S6BK | 0.51 | 0.32 | 0.23 | M | #6 Screw | 100 |
| CTM2S8 | CTM2S8BK | 0.63 | 0.43 | 0.28 | M, I, S | #8 Screw | 100, 1000 |
| CTM3S10 | CTM3S10BK-100 | 0.86 | 0.61 | 0.37 | M, I, S, LH | #10 Screw | 100 |
| - | CTMEH25BK | 1.62 | 0.72 | 0.61 | I, S, LH | 1/4" Screw | 25 |

FEATURES: *Screw fastened nylon cradles *Low profile *Excellent stability and rigidity
*Available in natural or UV resistant black

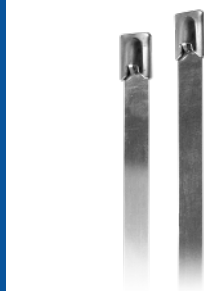
MULTIPLE TIE MOUNTING PLATES



| PART NUMBER | A (IN.) | B (IN.) | C (IN.) | D (IN.) | E (IN.) | F (IN.) | USE WITH CABLE TIE TYPE | MOUNT METHOD | PACKAGE SIZE |
|-------------|------------|------------|------------|------------|------------|------------|----------------------------|-----------------|-----------------|
| CTMTP3-10 | 4.25 | 0.50 | 0.13 | 1.25 | 0.30 | 0.20 | M, I, S | #10 Screw | PC |
| CTMTP6-10 | 9.59 | 0.63 | 0.20 | 1.50 | 0.30 | 0.20 | M, I, S, LH | #10 Screw | PC |

FEATURES: *Uniformly anchors parallel wire bundles, cables and tubing *Reduces the number of fasteners

STAINLESS STEEL CABLE TIES



| PART NUMBER | LENGTH (Inches) | WIDTH (Inches) | MAX BUNDLE | MIN. LOOP TENSILE STRENGTH | PACKAGE SIZE |
|----------------|--------------------|-------------------|---------------|-------------------------------|-----------------|
| CMLT1S-CP316 | 5.00 | 0.18 | 1.00 | 200 | 100 |
| CMLT2S-CP316 | 7.90 | 0.18 | 2.00 | 200 | 100 |
| CMLT2.7S-CP316 | 10.2 | 0.18 | 2.70 | 200 | 100 |
| CMLT4S-CP316 | 14.3 | 0.18 | 4.00 | 200 | 100 |
| CMLT4H-LP316 | 14.3 | 0.31 | 4.00 | 450 | 50 |
| CMLT6S-CP316 | 20.5 | 0.18 | 6.00 | 200 | 100 |

FEATURES: *Self-locking head design speeds installation *Provides a strong and durable method of cable bundling
*Smooth surface and rounded edges assures cable protection and worker safety *AISI 316 stainless steel for the most corrosive environments

STAINLESS STEEL CABLE TIE CUSHION SLEEVES



| PART NUMBER | FOR USE WITH TIE WIDTH (Inches) | SLEEVE WIDTH (Inches) | PACKAGE SIZE |
|-------------|------------------------------------|--------------------------|--------------|
| CM-PCSS | 0.18 | 0.33 | 100 FT REEL |
| CM-PCSH | 0.31 | 0.47 | 100 FT REEL |

COMPLIANCES: AISI 316 stainless steel

High quality, black cushion sleeve series is used with stainless steel cable ties. It is used in applications requiring improved gripping, separation of dissimilar metals and added bundle protection. It has excellent ultraviolet resistance.