

QUATIX® 8 PRO

PREMIUM MARINE GPS WATCH



PRODUCT OVERVIEW

When home is an ocean away, the quatix 8 Pro nautical smartwatch brings it closer. Leave your phone behind and stay connected on the water with built-in inReach® technology¹ for satellite and LTE connectivity. Quickly take command with boat mode, which brings vessel-connected apps to the forefront. And stay on course with up to 15 days of battery life in smartwatch mode.



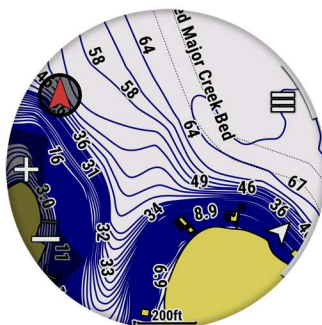
QUATIX® 8 PRO

PREMIUM MARINE GPS WATCH

KEY FEATURES

MARINIZED DESIGN

Built for life at the helm, this premium design is dive-rated and features leakproof buttons, a metal sensor guard and bright 1.4" AMOLED display with a scratch-resistant lens and durable titanium bezel.



SOS AND GARMIN RESPONSESM

NEW

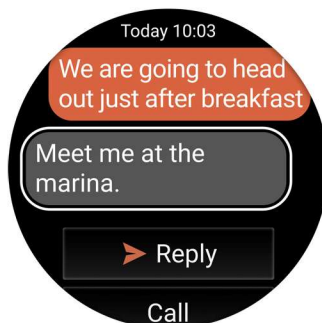
With inReach® technology¹ for satellite and LTE connectivity, quatix 8 Pro brings peace of mind to your adventures on and off the water. Need help? Trigger an interactive SOS message for emergency support from the 24/7-staffed [Garmin Response coordination center](#).



SATELLITE MESSAGING

NEW

When you're venturing into off-grid locations, including up to 50 miles offshore, the watch's inReach technology allows you to send messages and get location check-ins — once you establish a satellite link — with no phone connection required¹.



LTE CONNECTIVITY

NEW

Going for a run? Taking a swim? Leave your phone behind, and use your watch's LTE connection¹ to exchange messages and make voice calls — plus let friends follow along with LiveTrack™ location sharing and location check-ins. Even get access to weather conditions and forecasts.



BOAT MODE

Bring the helm onto your wrist with boat mode. It brings your vessel-connected apps to the forefront that let you control your autopilot and give you access to trolling motor and other boat data.



COMPREHENSIVE HELM CONTROL

Use the built-in speaker and mic on your quatix 8 Pro nautical smartwatch to control your compatible chartplotter with voice commands via Bluetooth® technology. Enjoy remote control capabilities with select compatible Garmin chartplotters, autopilots, Force® trolling motors, Fusion® stereos and more.



QUATIX® 8 PRO

PREMIUM MARINE GPS WATCH

KEY FEATURES CONTINUED

PHONE-FREE VOICE CALLS NEW

When you have an LTE connection, the Messenger Calls app on your watch lets you initiate and receive voice calls with other Garmin Messenger™ app users — without carrying your smartphone along.

MESSAGING ON THE GO NEW

Through satellite or LTE connection, messages can be shared with other Garmin Messenger app users directly from your watch. quatix 8 Pro will automatically sync with the Messenger app contacts when your watch is paired with your smartphone.

NO NEED TO SWITCH PROVIDERS NEW

You'll activate your [subscription](#) through Garmin, not your cellular provider, so access to inReach® services is a seamless connection through your watch.

SAVE POWER WITH LTE-M NEW

quatix 8 Pro connects to the LTE-M network, which is designed to use less power than standard LTE communications — minimizing battery drain on your watch to keep your adventures going longer and stronger.

LIVETRACK™ LOCATION SHARING NEW

LTE network connectivity¹ lets friends follow your adventures with LiveTrack location sharing. Alert your friends that you have started a LiveTrack session, in case they want to follow or reach you during your activity.

WEATHER FORECASTS NEW

Access to current weather conditions and multiday forecasts to help you stay prepared for what's ahead on your route.

LOCATION CHECK-INS NEW

Over satellite or LTE, user-initiated location updates can be sent to family and friends, keeping them apprised of your progress on trips and adventures.

CHARTS AND MAPS

This smartwatch comes with TopoActive maps with relief shading and supports optional BlueChart® g3 [coastal charts](#) and LakeVü™ g3 [inland maps](#).

SURF-READY FEATURES

This quatix smartwatch works with the [Surfline Sessions™](#) technology, which creates a video of every wave you ride in front of a Surfline® camera². With your Surfline Sessions subscription, watch them later to see how you did.

MARINE FOCUSED

Expanded marine apps now include wakesports and sail expedition in addition to familiar boating, sailing, and fishing activities.

FISH FORECAST APP

Using a celestial database to track sun and moon rise/set times, relative position to your location and more, this app offers suggestions for the best days and times for fishing success.

ANCHOR DRAG ALARM APP

The preloaded anchor drag app lets you customize your drift radius and now includes a mapping screen for visual reference.

TIDE DATA

Integrated tide data is now easier to view on the watch face using glances.

GARMIN SAILASSIST™ FEATURES

When it comes to sailing, don't just time your start — visualize it. Create a virtual starting line to time the perfect start. You can also, use tack assist to see whether you are headed or lifted.

ENDURANCE SCORE

Using your VO2 max, training loads and other factors, this feature helps gauge your ability to [sustain prolonged effort](#).

RECREATIONAL DIVING

A 40-meter dive rating and leakproof metal buttons let you reach new depths with support for scuba and apnea dive activities.

WAKESPORTS ACTIVITIES

Track your stats for water skiing, wakeboarding, wakesurfing and kiteboarding.

QUATIX® 8 PRO

PREMIUM MARINE GPS WATCH

PRODUCT COMPARISON

QUATIX 8 – AMOLED		QUATIX 8 PRO – AMOLED
		
SPECIFICATIONS AND HARDWARE		
PHYSICAL SIZE	47 mm: 47 x 47 x 14 mm 51 mm: 51 x 51 x 15 mm	47 x 47 x 16 mm
DISPLAY TYPE	AMOLED	AMOLED
DISPLAY SIZE	1.4"	1.4"
DISPLAY RESOLUTION	454 x 454 pixels	454 x 454 pixels
LENS MATERIAL	Sapphire crystal	Sapphire crystal
BATTERY LIFE	47 mm: Smartwatch: up to 16 days (7 days always-on) GPS only: up to 47 hours (37 hours always-on) 51 mm: Smartwatch: up to 29 days (13 days always-on) GPS only: up to 84 hours (65 hours always-on)	Smartwatch: up to 15 days (8 days always-on) GPS only: up to 44 hours (33 hours always-on)
WELLNESS FEATURES		
ECG APP ³	•	•
BUILT-IN LED FLASHLIGHT	•	•
SMART NOTIFICATIONS	•	•
HEALTH MONITORING	•	•
SLEEP SCORE AND INSIGHTS	•	•
GARMIN COACH	•	•
VO2 MAX	•	•
STAMINA	•	•
HILL SCORE	•	•
KEY FEATURES		
GARMIN PAY™ ⁴ CONTACTLESS PAYMENTS	•	•
MUSIC (SPOTIFY, DEEZER AND AMAZON MUSIC)	•	•
PRELOADED TOPOACTIVE MAPS WITH WI-FI® TECHNOLOGY	•	•
UP AHEAD MAP INTEGRATION	•	•
PRELOADED SKIVIEW™ MAPS	•	•
PRELOADED GOLF MAPS	•	•
RECREATIONAL DIVE	•	•
LEAKPROOF BUTTONS	•	•
SPEAKER AND MICROPHONE	•	•
VOICE ASSISTANT AND VOICE COMMAND	•	•
CONNECTED FEATURES		
INTERACTIVE SOS (LTE + SATELLITE)		•
VOICE MESSAGING AND CALLING (LTE)		•
SATELLITE MESSAGING		•
LIVETRACK™ LOCATION SHARING (LTE)		•
LOCATION CHECK-INS (LTE + SATELLITE)		•
WEATHER FORECAST (LTE + SATELLITE)		•