

THE DC GOLD ADVANTAGE

- 100% Waterproof and UV Resistant
- **3 Year Warranty** for All Speakers
- Speakers can be Rebuilt for Years
- Full Range - Single Voice Coil
- High Energy Neodymium Magnet
- Two Versions: Classic & Reference
- Ferro-Fluid Cooled Voice-Coil
- Aluminum/Magnesium Alloy Cone
- Optional Truextent® Beryllium Foil
- Speakers Hand Built in the USA
- 15 Years Building & Improving

Proudly made in the USA
by music lovers, for music lovers



Tech Support	Sales Manager
David Chaffey	Laurie Chaffey
Ph: 661-618-0221	Ph: 661-618-2050

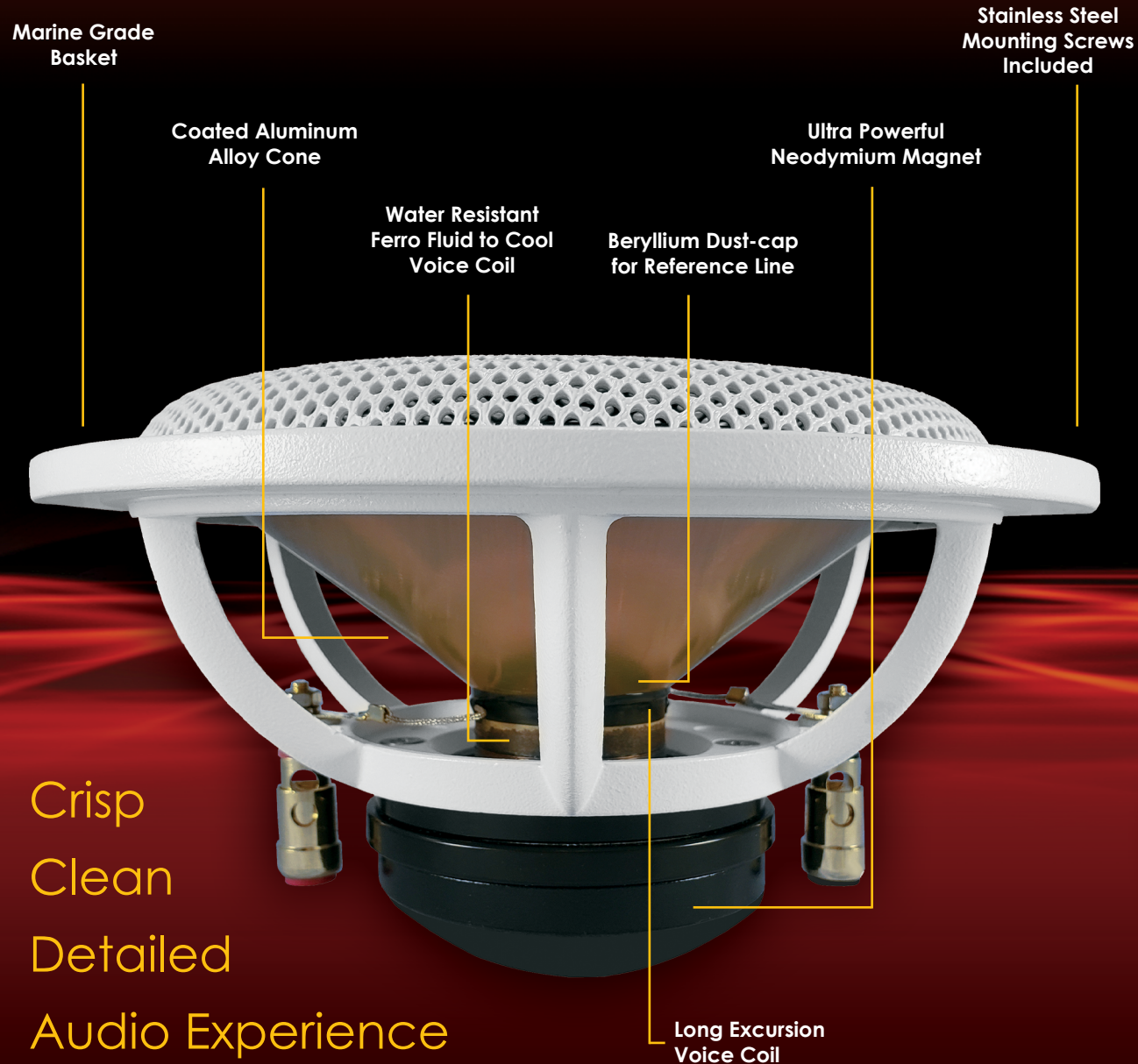
Email: dcgold@dcgold.com

www.dcgold.com

California, USA

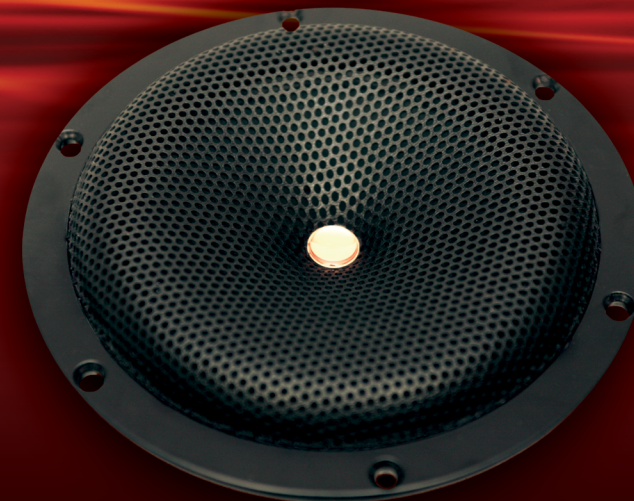


This is what makes us
better than the rest



Crisp
Clean
Detailed
Audio Experience

THE GOLD STANDARD
OF SOUND REPRODUCTION



Why Choose ----- DC GOLD AUDIO?

Our speakers are an excellent choice for marine, outdoor and home theater systems. Whenever you need crisp, clean, detailed sound, DC GOLD AUDIO™ has the perfect speaker to maximize your audio experience. Our speakers are completely waterproof and UV resistant with over 20 years of delivering high quality sound (previously Babb Speakers). Speakers got dirty? Don't worry! Just hose them off and you are back in action. Our speakers are top quality and can withstand the harshest environments. Easy installation – with no crossover components to interfere with the sound or wiring; ours are a plug and play speaker. From the quality of the build to the clarity of the sound, these speakers are sure to leave you speechless!

Crisp
Clean
Detailed
Audio Experience

4": N4C – Classic | N4R – Reference. Both sport a 1.5" voice-coil, very unique in a speaker this size. It has the volume and power to be utilized in environments that speakers are not typically used; jet-skis, motorcycles, snowmobiles, spas, etc. Although its bass is limited by its size (laws of physics), it has the best bass of any 4" on the market. With a true linear excursion of 0.2" (one-way), the speaker will move more air than many 5" speakers. The speaker would be equally at home in a home theater application or mid-range in a high-end multi-way system.

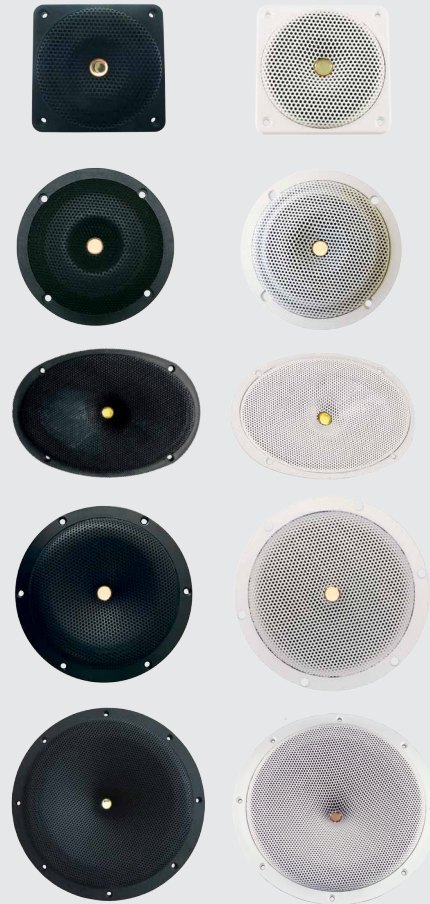
5": N5C – Classic | N5R – Reference. These are extremely fast, detailed speakers. They will play loudly and cleanly, with uses ranging from boating, recreational vehicles of all sorts, home theater and high-end home stereo. This is one of our most popular speakers for a reason – they sound great.

6x9": N69C - Classic | N69R - Reference. The 6x9" is a great speaker, allowing placement that will take advantage of its unique dispersion pattern. The N69C is an awesome speaker for your boat or patio. Many have used it as a replacement for the stock Lexus as it cleanly outperforms the OEM speaker. Our Reference Line N69R has been compared to speakers from Europe costing upwards of \$2000 / pair. These speakers play loud and clear, with depth that will surprise you. Many people have forgone subwoofers after hearing a set of these.

7": N7C - Classic | N7R - Reference. The concept behind the 7" was to be the highest end, full-range in the world, built to be durable enough for the marine market and have the finesse to fit in a high-end home system. This speaker has been compared to and exceeds some of the finest speakers in the world. In a home stereo setting it can convey the live event like no other. In your car or boat it will exceed your expectations.

9.5": N9.5C - Classic | N9.5R - Reference. If you want the deepest bass we offer, then the 9.5" is for you. It is not a subwoofer, but a full-range driver that will impress you with its depth and clarity. It plays loudly with very few watts of power, but put a decent amplifier behind it and it crank out the tunes. The Reference adds finesse to the mid-range and treble, making it suitable for those seeking a single driver, full-range for home applications without the need of a separate subwoofer.

9.5": W10C - Classic | W10R - Reference. Upon request, our 9.5" woofer is available with a longer Voice-coil for a combined load of 5 Ohms. Between the long throw VC and low moving mass, they deliver a clean, tight, extended bass.



Model	Size	Power	Efficiency	Freq.	Dimensions			Weight
					A	B	C	
N4C	4"	80W cont/300W max	90dB	50Hz - 19kHz	4.33"	3.9"	2.47"	2lb 5oz
N5C	5 1/4"	80W cont/300W max	91dB	40Hz - 19kHz	6.2"	4.7"	2.75"	2lb 5oz
N69C	6x9"	80W cont/300W max	92dB	35Hz - 19kHz	9.9"x6.9"	8.8x6"	3.3"	2lb 7oz
N7C	7"	80W cont/300W max	92dB	35Hz - 19kHz	7.4"	6.23"	3.25"	2lb 12oz
N9.5C	9 1/2"	80W cont/300W max	94dB	30Hz - 16k Hz	10.3"	8.85"	4.38"	3lb 8oz
Reference Line - for the connoisseur - smooth mids and extended highs								
N4R	4"	80W cont/300W max	90dB	50Hz - 20kHz	4.33"	3.9"	2.47"	2lb 5oz
N5R	5 1/4"	80W cont/300W max	91dB	40Hz - 20kHz	6.2"	4.7"	2.75"	2lb 5oz
N69R	6x9"	80W cont/300W max	92dB	35Hz - 20kHz	9.9"x6.9"	8.8x6"	3.3"	2lb 7oz
N7R	7"	80W cont/300W max	92dB	35Hz - 20kHz	7.4"	6.23"	3.25"	2lb 12oz
N9.5R	9 1/2"	80W cont/300W max	94dB	30Hz - 19kHz	10.3"	8.85"	4.38"	3lb 8oz
W10R	9 1/2"	150W cont/300W max	94dB	30Hz - 2kHz	10.3"	8.85"	4.38"	3lb 8oz

ALL SPEAKERS ARE VENTED NEODYMIUM MAGNETS AND NEED 1/4" MINIMUM CLEARANCE BEHIND THE MAGNET • SPEAKERS ARE SOLD IN PAIRS, COME IN BLACK OR WHITE WITH 4 OR 8 Ohm IMPEDANCE • 20 WATTS RMS MINIMUM PER CHANNEL RECOMMENDED

Dimensions Legend

