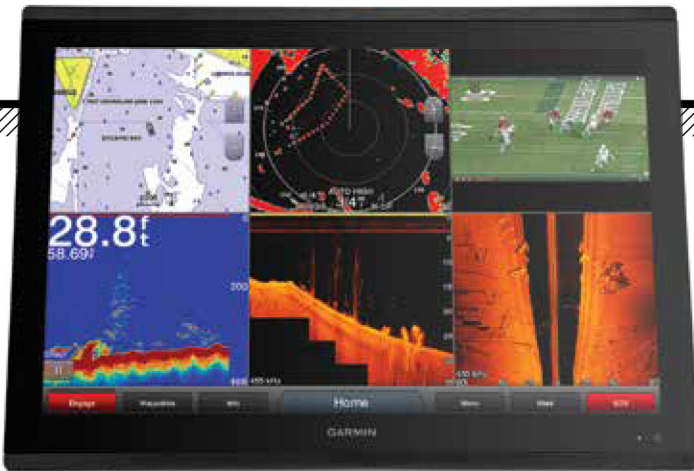


GPSMAP® 8600 MFD SERIES



GPSMAP 8617: 010-01510-01



GPSMAP 8622: 010-01511-01



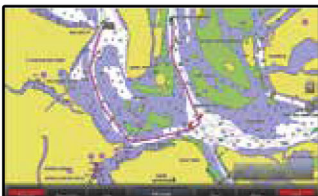
GPSMAP 8624: 010-01512-01

Large-format multifunction displays feature full HD in-plane switching (IPS) touchscreens that provide consistent, accurate colors from all viewing angles even while wearing polarized sunglasses.



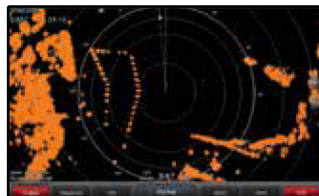
» PINCH TO ZOOM TOUCHSCREEN
 HIGH RESOLUTION, IPS DISPLAY
HIGH PERFORMANCE PROCESSOR
FULLY NETWORKABLE
«

BLUECHART G3 CHARTS



Highly detailed maps and cartography featuring Navionics data and Auto Guidance technology¹.

FANTOM RADAR



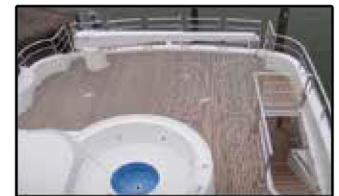
Supports Fantom™ radar with MotionScope™ technology.

DIGITAL SWITCHING SUPPORT



Nearly all your controls are available right at your fingertips.

CAMERA INTEGRATION



Supports camera integration for Garmin marine cameras, select Axis cameras, FLIR® thermal vision cameras and VIRB® action cameras.

ADDITIONAL SERIES FEATURES

- SmartMode™ provides one-touch access to docking, cruising, fishing, anchoring and more
- Install multiple displays either flush or flat mounted edge-to-edge
- Supports Garmin black box sonar systems; view multiple sources simultaneously
- Enhanced video processing with up to 4 IP (internet protocol) camera streams at the same time
- Built-in Wi-Fi® pairs with free ActiveCaptain™ app for access to OneChart™ to purchase and download new charts, smart notifications², software updates, Garmin Quickdraw™ Community data and more
- Presets for sonar, radar, cameras, media and digital switching can be independent or incorporated into SmartMode™ station controls
- Built-in Garmin SailAssist™ feature provides data, displays and pre-race guidance needed to gain a competitive edge
- Network compatible connectivity includes Wi-Fi®, ANT® technology, 4-wired Ethernet ports, NMEA 2000, HDMI and USB ports, Fusion-Link integration
- OneHelm and EmpirBus bring full control of all your onboard boat systems, such as digital switching, lighting, propulsion, pumps, air conditioning and infotainment, to your MFD screen

GRID 20 REMOTE INPUT DEVICE

Landscape: 010-02011-01
Portrait: 010-02011-00

The easy-to-use remote input device provides access and control of your entire Garmin marine system. It features a 360-degree joystick with a rotary knob and push-to-select button for easy chartplotter menu/setting navigation and fine control, even in the worst conditions. You can designate 4 favorite keys to restore your system to a previously saved configuration.



¹Auto Guidance is for planning purposes only and does not replace safe navigation operations

²When paired with a compatible smartphone; see Garmin.com/ble • Wi-Fi® is a registered trademark of the Wi-Fi Alliance.

MFD Chartplotters

GPSMAP 8624/8424



GPSMAP 8622/8422

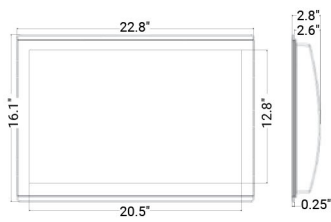


GPSMAP 8617/8417

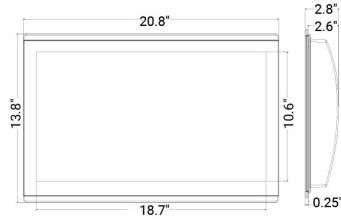


Display Size (diagonal)	24"	22"	17"
Display Type and Resolution (pixels)	WUXGA - 1920 x 1200	FHD - 1920 x 1080	WUXGA - 1920 x 1200
Touch- or Keyed Panel	Multitouch	Multitouch	Multitouch
GPS Receiver	10 Hz GPS/GLONASS, external	10 Hz GPS/GLONASS, external	10 Hz GPS/GLONASS, external
Standard GPS Antenna	External	External	External
Number of Waypoints	5,000	5,000	5,000
Number of Routes	100	100	100
J1939 Support	Yes	Yes	Yes
Garmin SmartMode™	Yes	Yes	Yes
Digital Switching support	Yes	Yes	Yes
NMEA 2000® Compatible	Yes	Yes	Yes
NMEA 0183® Compatible	Yes	Yes	Yes
Garmin Marine Network Compatible	Yes	Yes	Yes
Preloaded Map	Built-in BlueChart G3 and LakeVu g3	Worldwide Basemap	Worldwide Basemap
BlueChart® g3 Vision® Compatible	Yes	Yes	Yes
Auto Guidance	Yes	Yes	Yes
ActiveCaptain® Support	Yes	Yes	Yes
Sailing Features	Yes	Yes	Yes
Wi-Fi® and ANT™ Wireless Technology	Yes, built-in	Yes, built-in	Yes, built-in
GRID™ 20 (Garmin Remote Input Device) Compatible	Yes	Yes	Yes
FLIR® and Axis® IP Camera Support	Yes	Yes	Yes
Fusion-Link™ Support	Yes	Yes	Yes
Video Input	1 BNC composite 1 HDMI (HDCP compliant)	1 BNC composite 1 HDMI (HDCP compliant)	1 BNC composite 1 HDMI (HDCP compliant)
Video Output	1 HDMI	1 HDMI	1 HDMI
AIS and DSC Support	Yes	Yes	Yes
Sonar Module Support	Yes	Yes	Yes
Supported Frequency (sonar)	Dependent on optional sonar module	Dependent on optional sonar module	Dependent on optional sonar module
Transmit Power	Dependent on optional sonar module	Dependent on optional sonar module	Dependent on optional sonar module
Panoptix™ Support	Yes	Yes	Yes
Data Card Slots	2 SD™ cards (requires optional card reader)	2 SD™ cards (requires optional card reader)	2 SD™ cards (requires optional card reader)
Water Rating	IPX7	IPX7	IPX7
Mounting Options	Flat or Flush	Flat or Flush	Flat or Flush
Power Supply	10-35 V	10-35 V	10-35 V
Typical Current Draw at 12 Vdc:	6.1 A	3.9 A	2.8 A
Connections	Built-in wireless connectivity, NMEA 2000: 1 port, NMEA 0183: 4 in and 2 out, Marine network: 4 ports, USB: 1 port, Video in: 1 BNC composite and 1 HDMI (HDCP compliant), Video out: 1 HDMI, J1939: 1 port	Built-in wireless connectivity, NMEA 2000: 1 port, NMEA 0183: 4 in and 2 out, Marine network: 4 ports, USB: 1 port, Video in: 1 BNC composite and 1 HDMI (HDCP compliant), Video out: 1 HDMI, J1939: 1 port	Built-in wireless connectivity, NMEA 2000: 1 port, NMEA 0183: 4 in and 2 out, Marine network: 4 ports, USB: 1 port, Video in: 1 BNC composite and 1 HDMI (HDCP compliant), Video out: 1 HDMI, J1939: 1 port

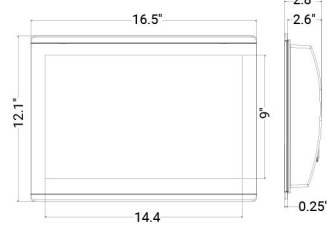
GPSMAP 8624



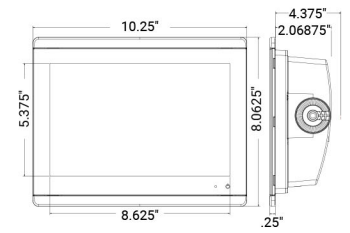
GPSMAP 8622



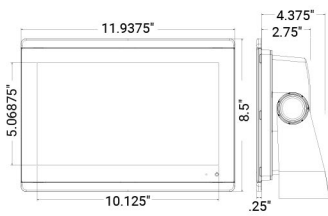
GPSMAP 8617



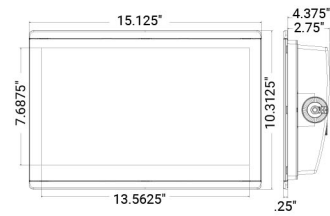
GPSMAP 8610 / 8610XSV



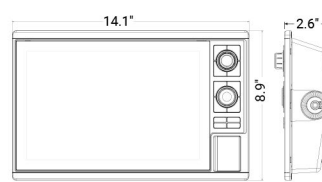
GPSMAP 8612 / 8612XSV



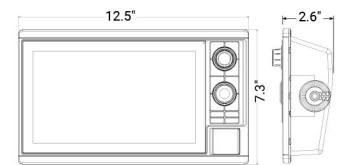
GPSMAP 8616 / 8616XSV



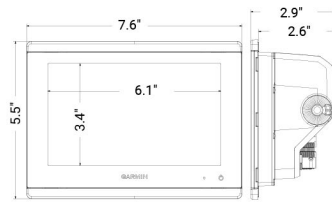
GPSMAP I242 SERIES



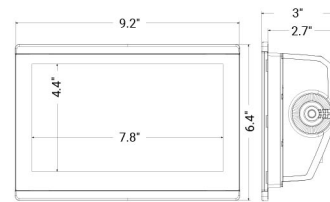
GPSMAP I042 SERIES



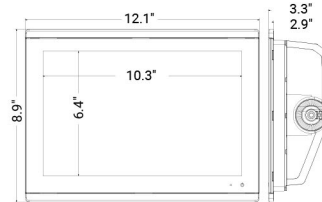
GPSMAP 743/743XSV



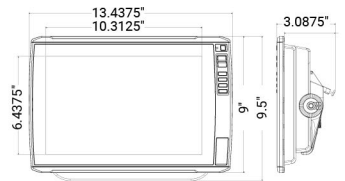
GPSMAP 943/943XSV



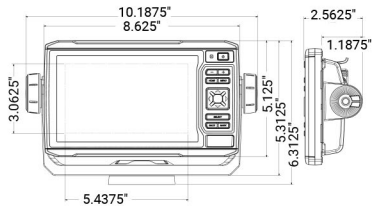
GPSMAP I243/I243XSV



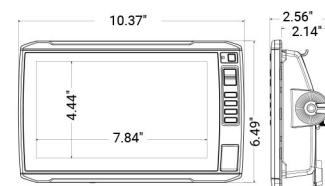
ECHOMAP ULTRA I26/I26XS



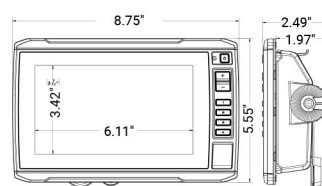
ECHOMAP ULTRA I06/I06XS



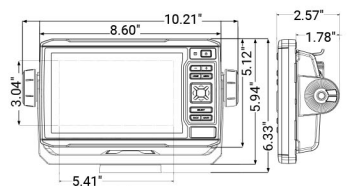
ECHOMAP UHD 94SV/93SV



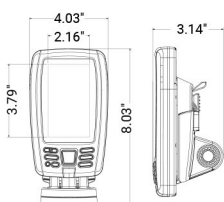
ECHOMAP UHD 74SV/73SV & 74CV/73CV



ECHOMAP UHD 64CV/63CV



ECHOMAP PLUS 44CV/43CV



GARMIN GRID 20

