

NEW



i-PILOT LINK

NOW WE'RE REALLY TALKING.

Redesigned with new features, a new remote, and Bluetooth connectivity, the new i-Pilot Link system communicates better than ever before to give you even more control of your trolling motor from your Humminbird or i-Pilot Link remote.



REDESIGNED REMOTE

A more compact remote with a bigger, full-color touchscreen featuring a fully-customizable menu. A keypad with commonly used navigation functions gives you the best of both worlds.



BLUETOOTH COMMUNICATION

The new i-Pilot system connects via Bluetooth, allowing for easy software updates to add new features to your system via your smartphone.



i-PILOT LINK PHONE APP

Bluetooth communication allows new i-Pilot to pair with your smartphone, allowing for easy software updates and quick command of speed, steering, Spot-Lock, high speed bypass, and Advanced AutoPilot.



HEADING SENSOR

A new Heading Sensor recognizes changes in the boat's heading due to wind and current, and communicates with the i-Pilot Link system to minimize boat swing.



COMPATIBILITY

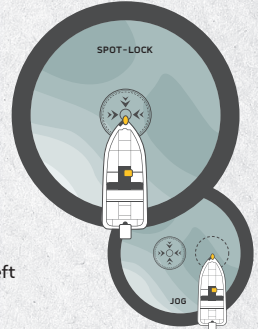
i-Pilot Link is available pre-installed on:

- Ultrex™
- Ulterra™ / Riptide® Ulterra™
- Terrova® / Riptide® Terrova®



REINVENTED SPOT-LOCK

Enhanced with new hardware and software algorithms, Spot-Lock works holds you tighter to your fishing spot than ever before, making it the most accurate electronic GPS anchor ever.

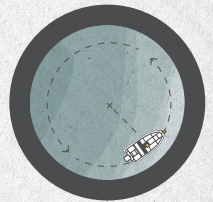


SPOT-LOCK JOG

Move your Spot-Lock five feet forward, backward, left or right - just by pushing a button.

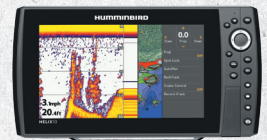
CIRCLE MODE

Cast to a spot while orbiting in a circle around it with Circle Mode. Just choose the spot and how far from it you want to be, and your boat will circle the spot while you drop the hammer.



HUMMINBIRD VIRTUAL REMOTE

Control speed, steering, Spot-Lock, and Advanced AutoPilot, directly from a new virtual remote on the Humminbird screen.



ADDITIONAL FEATURES

- Follow the Contour
- iTrack Record/Playback
- Cruise Control
- Contour Offset
- BackTrack
- CoPilot
- GoTo
- Advanced AutoPilot