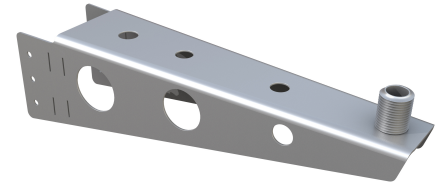


# 4366-R

## STAINLESS STEEL MAST MOUNT

### Product Number: 4366-R

The Shakespeare® 4366-R is a new and improved version of the 4366 mast mount. It features a stainless steel design with a standard 1"-14 thread to allow mast mounting of the Shakespeare SeaWatch® TV antennas 3019, 3015, 3004, the WebWhip®, and a host of other stainless steel whip antennas like the 5215<sup>1</sup>.



Kit Includes:  
Stainless Steel mast mount (mounting hardware not included)

#### Features:


- Made from Stainless Steel
- Two installation options
- Two product mounting options

#### Benefits:

- Corrosion resistant, durable
- Versatile mounting options- screw holes, banding slots
- A 1"-14 threaded stud & 2 mounting holes support a variety of Shakespeare products such as the SeaWatch 3019, 3015, or 3004, the WebWhip, the 5215, and other SS whip antennas<sup>1</sup>



 Easy Set Up

 Beautiful and Durable

 Flexibility in Mounting

 Universal Compatibility

## TECHNICAL SPECIFICATIONS

Product Number: 4366-R	
Dimensions (L x W x H)	15 3/4" x 3 5/8" x 4 5/32" (400 x 92 x 106 mm)
Weight	1.7 lbs (0.8kg) Approximately
Mounting options	6 x Screws, 2 x Banding Straps, or both (Up to 3/4" (19mm) banding straps and 1/4" (6.4mm) dia. holes)
Mast diameter	3 5/8" (92mm) dia. or larger
RoHS Compliant	Yes

## PRODUCT MOUNTING OPTIONS

Mounting Feature	Compatible Styles
Mounting stub with hollow channel to pass cable:	
1 x 1"-14 male threaded stub	SeaWatch 3019, 3015, or 3004
Ideal for antennas mounted through SO-239 type connector:	5215-AIS, 5215-C-X, 5216 US Only: 5215, 5242-A EU only: 5215-D, 5242-A, 5247-A-D
2 x 5/8" (15.9mm) dia. holes	WebWhip WIFI-1 or WIFI-2

<sup>1</sup>See product mounting options section.