

GPSMAP® 8600 CHARTPLOTTER SERIES



010-02091-01 | 8610
010-02091-03 | 8610xsv



010-02092-01 | 8612
010-02092-03 | 8612xsv



010-02093-01 | 8616
010-02093-03 | 8616xsv

Chartplotter and chartplotter/sonar combos featuring full HD in-plane switching (IPS) touchscreen displays for wider viewing angles, superior clarity and sunlight readability even with polarized sunglasses. Preloaded BlueChart® g3 U.S. coastal charts and LakeVü g3 inland maps each featuring Navionics® data and Auto Guidance¹ technology.

» HIGH-RESOLUTION,
IPS TOUCHSCREEN DISPLAY

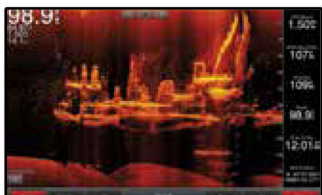
..... HIGH-PERFORMANCE PROCESSOR

..... FULLY NETWORKABLE

..... XSV MODELS INCLUDE BUILT-IN SUPPORT FOR
THE FULL SUITE OF GARMIN SONAR OPTIONS



ULTRA HIGH-DEFINITION SONAR



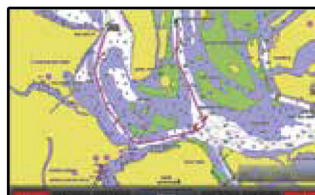
Built-in support for the Ultra High-Definition scanning sonar system, no black box needed.

PANOPTIX LIVESCOPE™



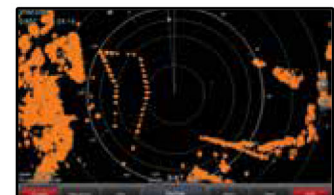
Supports all Panoptix sonar, including Panoptix LiveScope system.

BLUECHART G3 CHARTS



Highly detailed maps and cartography featuring Navionics data and Auto Guidance technology¹.

GMR FANTOM™ RADAR



Supports Fantom radar with MotionScope™ technology.

ADDITIONAL SERIES FEATURES

Full HD IPS touchscreen display for wider viewing angles, superior clarity and sunlight readability even with polarized sunglasses

Built-in support for the full suite of Garmin sonar capabilities: CHIRP traditional, ClearVü and SideVü scanning sonars, Ultra-High Definition scanning sonar (no black box needed), the Panoptix LiveScope system, Panoptix LiveScope™ LVS12 and the full line of Panoptix sonars (transducers sold separately)

Adds a stunning appearance with ability to install multiple displays either flat mounted edge to edge to create a sleek glass helm look or mounted flush

Fully NMEA 2000® and Garmin Marine Network capable to easily build your marine system, from sonar, radar and autopilots to instruments, cameras and multimedia

BLUETOOTH®, ANT®, Wi-Fi® connectivity for quatix® smartwatches, VIRB® 360, gWind™ Wireless 2 and more

Use exclusive OneHelm™ feature to connect to many third-party devices for full control of your boat on your chartplotter screen

Preloaded with Garmin exclusive BlueChart g3 coastal charts and LakeVü g3 inland maps, which have integrated Navionics data, as well as Auto Guidance¹

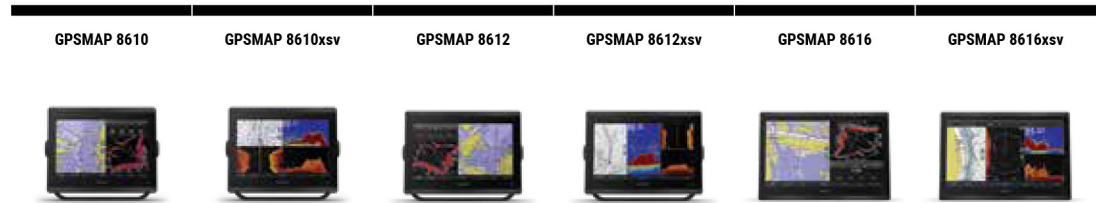
SmartMode™ station controls enable presets for one-touch access to docking, cruising, fishing, anchoring and more

Built-in SailAssist provides data, displays and prerace guidance needed to gain a competitive edge

Use built-in Wi-Fi to pair with the free ActiveCaptain® app for access to OneChart™, smart notifications², Garmin Quickdraw™ Community data and more

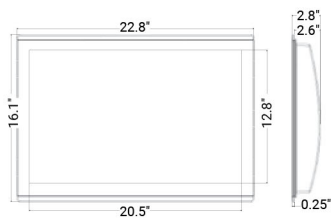
Compatible with Force™ trolling motor for full control of the motor from the chartplotter screen, plus the ability to route to waypoints, follow tracks and more.

Chartplotters and Combos

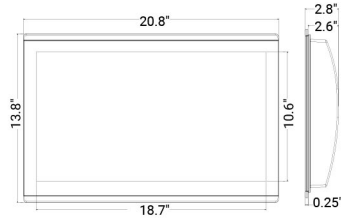


	GPSMAP 8610	GPSMAP 8610xsv	GPSMAP 8612	GPSMAP 8612xsv	GPSMAP 8616	GPSMAP 8616xsv
Display Size (diagonal)	10"	10"	12"	12"	16"	16"
Display Type and Resolution (pixels)	WUXGA - 1920 x 1200	WUXGA - 1920 x 1200	FHD - 1920 x 1080	FHD - 1920 x 1080	FHD - 1920 x 1080	FHD - 1920 x 1080
Touch- or Keyed Panel	Multitouch	Multitouch	Multitouch	Multitouch	Multitouch	Multitouch
GPS Receiver	10 Hz GPS/GLONASS/Galileo	10 Hz GPS/GLONASS/Galileo	10 Hz GPS/GLONASS/Galileo	10 Hz GPS/GLONASS/Galileo	10 Hz GPS/GLONASS/Galileo	10 Hz GPS/GLONASS/Galileo
Standard GPS Antenna	Internal (input for external)	Internal (input for external)	Internal (input for external)	Internal (input for external)	Internal (input for external)	Internal (input for external)
Number of Waypoints	5,000	5,000	5,000	5,000	5,000	5,000
Number of Routes	100	100	100	100	100	100
J1939 Support	Yes	Yes	Yes	Yes	Yes	Yes
NMEA 2000® Compatible	Yes	Yes	Yes	Yes	Yes	Yes
NMEA 0183® Compatible	Yes	Yes	Yes	Yes	Yes	Yes
Garmin Marine Network Compatible	Yes	Yes	Yes	Yes	Yes	Yes
Preloaded Map	BlueChart g3 & LakeVu g3	BlueChart g3 & LakeVu g3	BlueChart g3 & LakeVu g3	BlueChart g3 & LakeVu g3	BlueChart g3 & LakeVu g3	BlueChart g3 & LakeVu g3
Auto Guidance	Yes	Yes	Yes	Yes	Yes	Yes
ActiveCaptain® Support	Yes	Yes	Yes	Yes	Yes	Yes
SailAssist	Yes	Yes	Yes	Yes	Yes	Yes
Wi-Fi® and ANT™ Wireless Technology	Yes	Yes	Yes	Yes	Yes	Yes
GRID™ 20 (Garmin Remote Input Device) Compatible	Yes	Yes	Yes	Yes	Yes	Yes
Wireless Remote Compatible	Yes	Yes	Yes	Yes	Yes	Yes
FLIR® Camera Support	Yes	Yes	Yes	Yes	Yes	Yes
Fusion-Link™ Support	Yes	Yes	Yes	Yes	Yes	Yes
Video Input	1 HDMI	1 HDMI	1 HDMI	1 HDMI	1 HDMI	1 HDMI
Video Output	1 HDMI	1 HDMI	1 HDMI	1 HDMI	1 HDMI	1 HDMI
AIS and DSC Support	Yes	Yes	Yes	Yes	Yes	Yes
Sonar module Support	Yes	Yes	Yes	Yes	Yes	Yes
Supported Frequency (sonar) ¹		40 kHz-250 kHz CHIRP, 260/455/800/1200 kHz CHIRP scanning (ClearVü and SideVü)		40 kHz-250 kHz CHIRP, 260/455/800/1200 kHz CHIRP scanning (ClearVü and SideVü)		40 kHz-250 kHz CHIRP, 260/455/800/1200 kHz CHIRP scanning (ClearVü and SideVü)
Transmit Power		1 kW traditional, 1 kW CHIRP		1 kW traditional, 1 kW CHIRP		1 kW traditional, 1 kW CHIRP
Panoptix™ Support	Yes	Yes	Yes	Yes	Yes	Yes
Preloaded Quickdraw Contours Software	Yes	Yes	Yes	Yes	Yes	Yes
Data Card Slots	2 micro SD	2 micro SD	2 micro SD	2 micro SD	2 micro SD	2 micro SD
Water Rating	IPX7	IPX7	IPX7	IPX7	IPX7	IPX7
Mounting Options	Bail, Flush or Flat	Bail, Flush or Flat	Bail, Flush or Flat	Bail, Flush or Flat	Bail, Flush or Flat	Bail, Flush or Flat
Power Supply	10-32 V	10-32 V	10-32 V	10-32 V	10-32 V	10-32 V
Typical Supply at 12 Vdc:	2.0 A	2.7 A	2.4 A	3.1 A	3.5 A	4.2 A
Connections	Build-in wireless connectivity, NMEA 2000: 1 port, J1939, NMEA0183: 1 port, Marine Network: 2 ports, Video in: 1 BNC, 1 HDMI, Video out: 1 HDMI, USB	Build-in wireless connectivity, NMEA 2000: 1 port, J1939, NMEA0183: 1 port, Marine Network: 2 ports, Video in: 1 BNC, 1 HDMI, Video out: 1 HDMI, USB	Build-in wireless connectivity, NMEA 2000: 1 port, J1939, NMEA0183: 1 port, Marine Network: 2 ports, Video in: 1 BNC, 1 HDMI, Video out: 1 HDMI, USB	Build-in wireless connectivity, NMEA 2000: 1 port, J1939, NMEA0183: 1 port, Marine Network: 2 ports, Video in: 1 BNC, 1 HDMI, Video out: 1 HDMI, USB	Build-in wireless connectivity, NMEA 2000: 1 port, J1939, NMEA0183: 1 port, Marine Network: 2 ports, Video in: 1 BNC, 1 HDMI, Video out: 1 HDMI, USB	Build-in wireless connectivity, NMEA 2000: 1 port, J1939, NMEA0183: 1 port, Marine Network: 2 ports, Video in: 1 BNC, 1 HDMI, Video out: 1 HDMI, USB

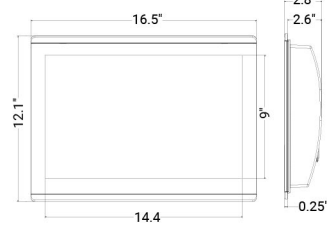
GPSMAP 8624



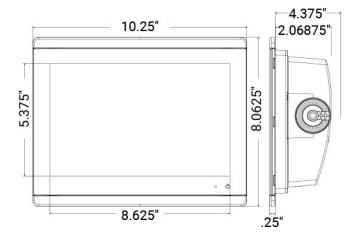
GPSMAP 8622



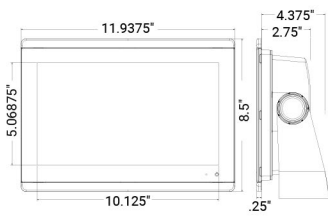
GPSMAP 8617



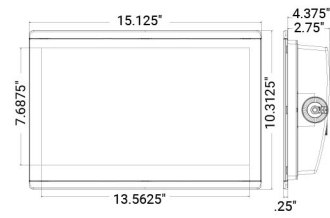
GPSMAP 8610 / 8610XSV



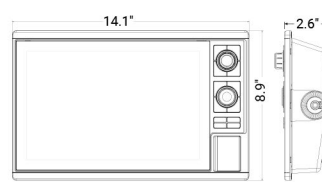
GPSMAP 8612 / 8612XSV



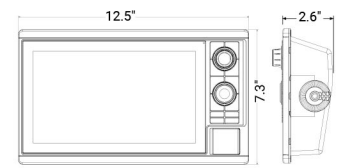
GPSMAP 8616 / 8616XSV



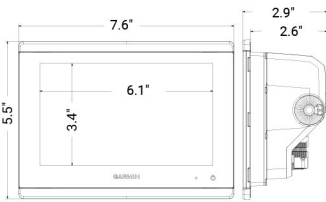
GPSMAP I242 SERIES



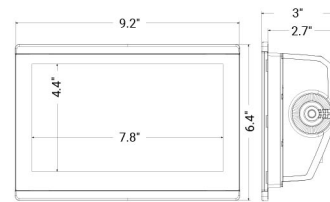
GPSMAP I042 SERIES



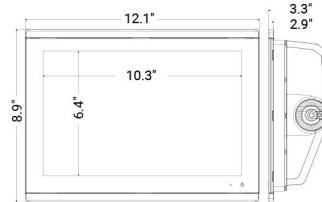
GPSMAP 743/743XSV



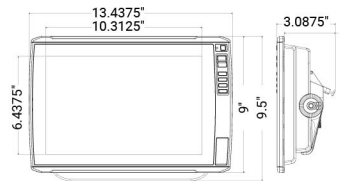
GPSMAP 943/943XSV



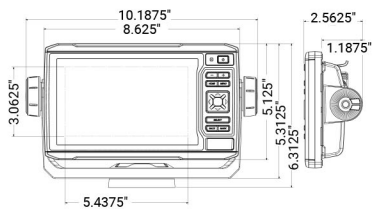
GPSMAP I243/I243XSV



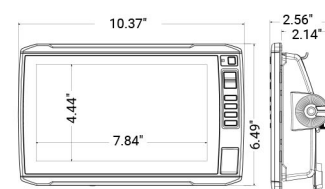
ECHOMAP ULTRA I26/I26XS



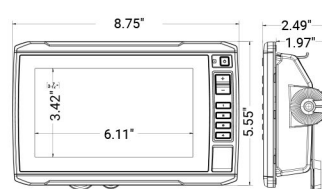
ECHOMAP ULTRA I06/I06XS



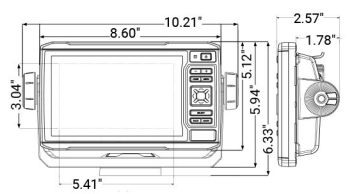
ECHOMAP UHD 94SV/93SV



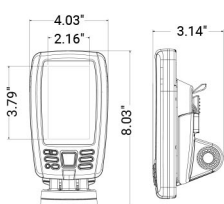
ECHOMAP UHD 74SV/73SV & 74CV/73CV



ECHOMAP UHD 64CV/63CV



ECHOMAP PLUS 44CV/43CV



GARMIN GRID 20

