

ECHOMAP® ULTRA SERIES



010-02112-00 | 106
010-02112-01 | 106sv + transducer



010-02114-00 | 126
010-02529-01 | 126sv + transducer

All the fishing tools are built-in. Chartplotter/sonar combos with keyed-assist touchscreen displays. Built-in CHIRP traditional and Ultra High-Definition ClearVü and SideVü scanning sonar¹. Supports our full line of Panoptix™ sonars. Preloaded BlueChart® g3 coastal charts and LakeVü g3 inland maps each featuring Navionics® data and Auto Guidance technology².

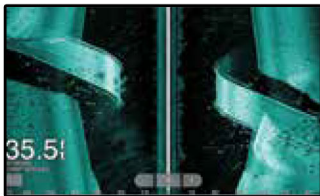
KEYED-ASSIST
TOUCHSCREEN DISPLAY

BUILT-IN CHIRP TRADITIONAL AND
ULTRA HIGH-DEFINITION, CLEARVÜ
AND SIDEVÜ SCANNING SONAR¹

PRELOADED BLUECHART G3 CHARTS AND
LAKEVÜ G3 MAPS FEATURING NAVIONICS
DATA AND AUTO GUIDANCE²

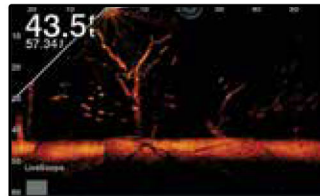
SHARE SONAR,
WAYPOINTS, MAPS
AND ROUTES³

ULTRA HIGH-DEFINITION SONAR



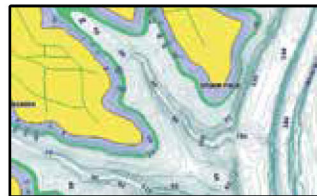
Built-in support for the Ultra High-Definition scanning sonar system, no black box needed.

PANOPTIX LIVESCOPE™



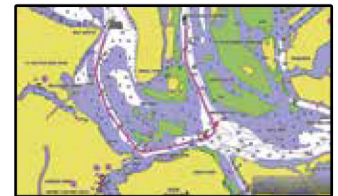
Supports all Panoptix™ sonar, including Panoptix LiveScope™ System and Panoptix LiveScope™ LVST2 (sold separately).

LAKEVÜ G3 MAPS



Highly detailed inland maps featuring Navionics data.

BLUECHART G3 CHARTS



Highly detailed maps and cartography featuring Navionics data.

ADDITIONAL SERIES FEATURES

Built-in Quickdraw Contours mapping software instantly creates personalized fishing maps on-screen with 1' contours as you fish

Built-in Wi-Fi® connectivity pairs with free ActiveCaptain® app for access to OneChart™ to purchase and download new charts; also receive smart notifications³, software updates, Garmin Quickdraw™ Community data and more

Network capable with NMEA 2000® connectivity and support for heading sensors, autopilots, digital switching and Fusion-Link™ audio system and more






Quick-disconnect bail mount

Compatible with Force™ trolling motor for full control of the motor from the chartplotter screen, plus the ability to route to waypoints, follow tracks and more

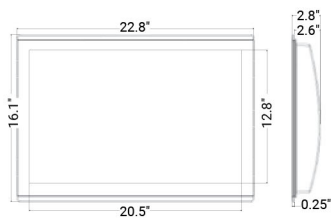
Share sonar, waypoints and routes with other ECHOMAP Ultra 10" and 12" units, ECHOMAP UHD 7" and 9" units and ECHOMAP Plus 7" and 9" units.

¹Available with or without included transducer • ²Auto Guidance is for planning purposes only and does not replace safe navigation operations • ³When paired with a compatible smartphone; see Garmin.com/ble • Wi-Fi is a registered trademark of the Wi-Fi Alliance.

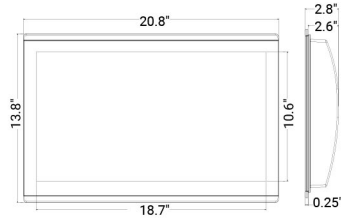
Combos

	GPSMAP 1242xsv/1242 and GPSMAP 1042xsv/1042	GPSMAP 1243xsv/1243 and GPSMAP 943xsv/943 and GPSMAP 743xsv/743	ECHOMAP Ultra 106xs/106 and 126xs/126	ECHOMAP UHD 94sv/93sv and ECHOMAP UHD 74sv/73sv & 74cv/73cv and ECHOMAP UHD 64cv/63cv	ECHOMAP Plus 64cv/63cv and 44cv/43cv
					
Display Size (diagonal)	12" (1242xsv/1242) 10" (1042xsv/1042)	12" (1243xsv/1243) 9" (943xsv/943) 7" (743xsv/743)	10" (106xs/106) 12" (126xs/126)	9", 7" and 6"	6.2" (64cv/63cv) 4.3" (44cv/43cv)
Display Type and Resolution (pixels)	WXGA - 1280 x 800 (1242xsv/1242) WSVGA - 1024 x 600 (1042xsv/1042)	WXGA - 1280x800 (1243xsv/1243) WXGA - 1280x720 (943xsv/943) WSVGA - 1014x600 (743xsv/743)	1280 x 800	WVGA - 800 x 480	WVGA - 800 x 480 (64cv/63cv) QVGA - 272 x 480 (44cv/43cv)
Touch- or Keyed Panel	Keyed	Multitouch	Keyed Assist Multitouch	Keyed Assist Multitouch	Keyed
GPS Receiver	10 Hz GPS/GLONASS, internal	10 Hz GPS/GLONASS, internal	10 Hz	5 Hz GPS/GLONASS, internal	5 Hz GPS/GLONASS, internal
Standard GPS Antenna	Internal (input for external)	Internal (input for external)	Internal (input for external)	Internal (input for external)	Internal (input for external)
Number of Waypoints	5,000	5,000	5,000	5,000	5,000
Number of Routes	100	100	100	100	100
NMEA 2000® Compatible	Yes	Yes	Yes	Yes	Yes (64cv/63cv)
NMEA 0183® Compatible	Yes	Yes	Yes	Yes	Yes
Garmin Marine Network Compatible	Yes	Yes	Yes, with other 7" and 9" ECHOMAP UHD, ECHOMAP Plus and ECHOMAP Ultra models only	Yes, with other 7" and 9" ECHOMAP UHD, ECHOMAP Plus and ECHOMAP Ultra models only	No
OneHelm	No	Yes	No	No	No
Preloaded Map	BlueChart® g3 & LakeVü g3	BlueChart® g3 & LakeVü g3	BlueChart® g3 & LakeVü g3	BlueChart® g3 & LakeVü g3	BlueChart® g2 (64cv, 44cv) LakeVü HD (63cv, 43cv)
BlueChart® g3 Vision® Compatible	Yes	Yes	Yes	Yes	Yes
Auto Guidance	Yes	Yes	Yes	When paired with a Vision or Ultra card	When paired with a Vision or Ultra card
ActiveCaptain® Support	Yes	Yes	Yes	Yes	No
SailAssist	Yes	Yes	Yes	Yes	Yes (64cv/63cv only)
Wi-Fi® Wireless Connectivity	Yes	Yes	Yes	Yes	Yes (64cv/63cv) No (44cv/43cv)
ANT® Wireless Connectivity	Yes	Yes	Yes	No	No
GRID™ 20 (Garmin Remote Input Device) Compatible	Yes	Yes	No	No	No
Wireless Remote Compatible	Yes	Yes	No	No	No
FLIR® Camera Support	Yes	Yes	No	No	No
Fusion-Link™ Support	Yes	Yes	Yes	Yes	Yes (64cv/63cv) No (44cv/43cv)
Video Input/Output	1 BNC	1 BNC Video Output: 1 HDMI 1243xsv/1243	No	No	No
AIS and DSC Support	Yes	Yes	Yes	Yes	No (64cv/63cv)
Traditional HD ID 77/200	Yes (xsv)	Yes (xsv)	Yes	Yes	Yes
Traditional HD ID 50/200	Yes (xsv)	Yes (xsv)	Yes	Yes	Yes
Traditional CHIRP	Yes (xsv)	Yes (xsv)	Yes	Yes	Yes
CHIRP ClearVü	Yes (xsv)	Yes (xsv)	Yes	Yes	Yes
CHIRP SideVü	Yes (xsv)	Yes (xsv)	Yes	Yes	No
Dual Channel CHIRP	No	No	No	No	No
Ultra High-Definition scanning sonar	No	Yes	Yes	Yes	No
Optional Sonar Support	Yes	Yes	Yes	No	No
Internal Sonar Sharing	Yes (xsv)	Yes (xsv)	Yes, with other 7" and 9" ECHOMAP Plus models and ECHOMAP Ultra models only	Yes, with other 7" and 9" ECHOMAP UHD and ECHOMAP Ultra models only	No
Transmit Power	1 kW traditional, 1 kW CHIRP (xsv)	1 kW traditional, 1 kW CHIRP (xsv)	600 W	Up to 500 W (RMS)	Up to 500 W (RMS)
Panoptix™ Support	Yes	Yes	Yes	Yes	No
Preloaded Quickdraw Contours Software	Yes	Yes	Yes	Yes	Yes
Data Card Slots	2 SD™ cards	2 MicroSD™ cards	2 MicroSD™ cards	1 MicroSD™ card	1 MicroSD™ card
Water Rating	IPX7	IPX7	IPX7	IPX7	IPX7
Mounting Options	Bail or Flush	Bail, Flush or Flat	Bail or Flush	Bail or Flush	Bail or Flush
Power Supply	10-32 V	10-32 V	10-20 V	10-20 V	10-20 V
Typical Current Draw at 12 Vdc:	2.5 A	2.2 A (1243xsv/1243) 1.8 A (943xsv/943) 1.5 A (743xsv/743)	2.2 A (106xs/106) 2.5 A (126xs/126)	1.95 A	1.5 A
Connections	Built-in wireless connectivity, NMEA 2000: 1 port, NMEA 0183: 1 port, Marine Network: 2 ports, Video in: 1 BNC	Built-in wireless connectivity, USB: 1 port, NMEA 2000: 1 port, NMEA 0183: 1 port, Marine Network: 2 ports (1243xsv/1243), 1 port (943xsv/943 and 743xsv/743), Video in: 1 BNC, J1939 (1243xsv/1243)	NMEA 2000: 1 port, NMEA 0183: 1 in and 1 out Marine Network: 2 ports	NMEA 2000: 1 port, NMEA 0183: 1 in and 1 out Marine Network: 1 port	NMEA 2000: 1 port (64cv/63cv), NMEA 0183: 1 in and 1 out

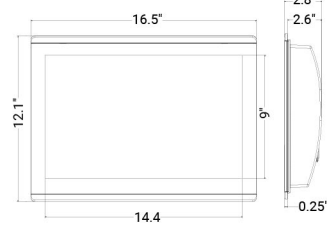
GPSMAP 8624



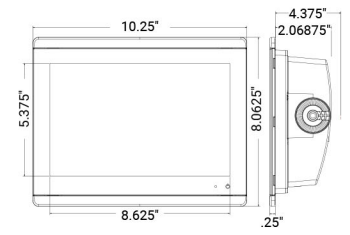
GPSMAP 8622



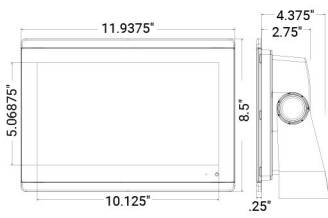
GPSMAP 8617



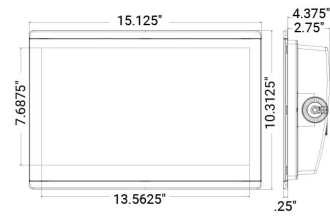
GPSMAP 8610 / 8610XSV



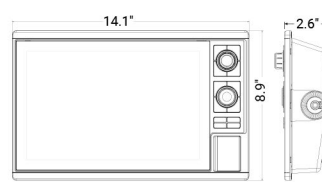
GPSMAP 8612 / 8612XSV



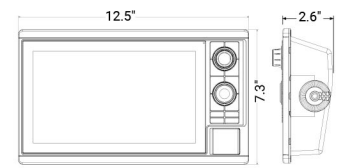
GPSMAP 8616 / 8616XSV



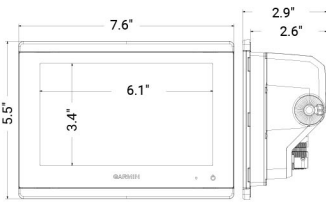
GPSMAP I242 SERIES



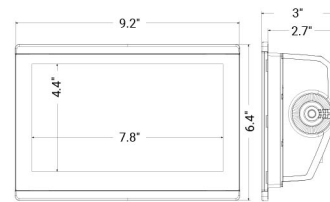
GPSMAP I042 SERIES



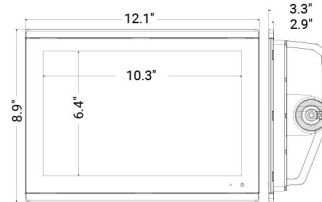
GPSMAP 743/743XSV



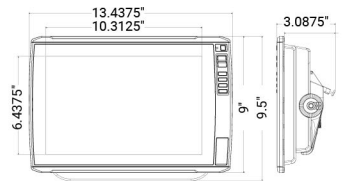
GPSMAP 943/943XSV



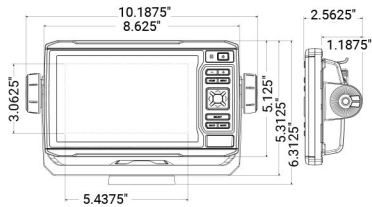
GPSMAP I243/I243XSV



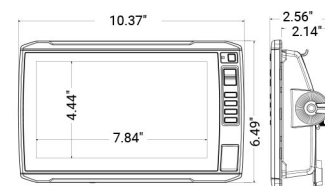
ECHOMAP ULTRA I26/I26XS



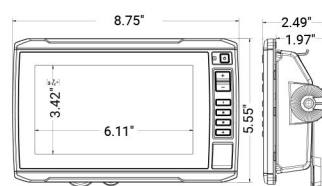
ECHOMAP ULTRA I06/I06XS



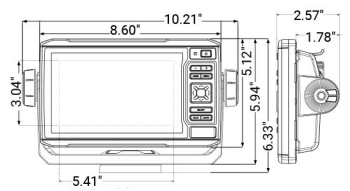
ECHOMAP UHD 94SV/93SV



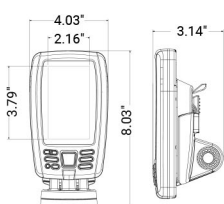
ECHOMAP UHD 74SV/73SV & 74CV/73CV



ECHOMAP UHD 64CV/63CV



ECHOMAP PLUS 44CV/43CV



GARMIN GRID 20

