

▶ GARMIN BOAT SWITCH

ENTRY LEVEL DIGITAL SWITCHING SOLUTION



PRODUCT OVERVIEW:

Get the integrated boat experience with Garmin Boat Switch. This all-in-one digital switching solution is ready to go out of the box with no custom design or configuration loading required. It lets you operate up to 20 circuits right from your compatible GPSMAP® or ECHOMAP™ chartplotter instead of using physical buttons or switches. It offers four different switch types, including on/off for bilge pumps and nav lights, press-and-hold dimmers for cabin lights, momentary outputs for horns and timer to circulate your livewell pump. Plus, it provides built-in tank monitoring and calibration for as many as four tanks — including fuel, fresh water, gray water, black water and livewell. It installs without special tools and allows you to easily add and name switches on your chartplotter display.



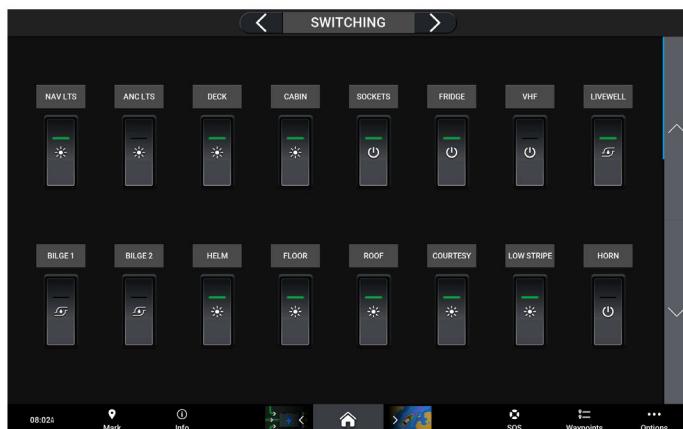
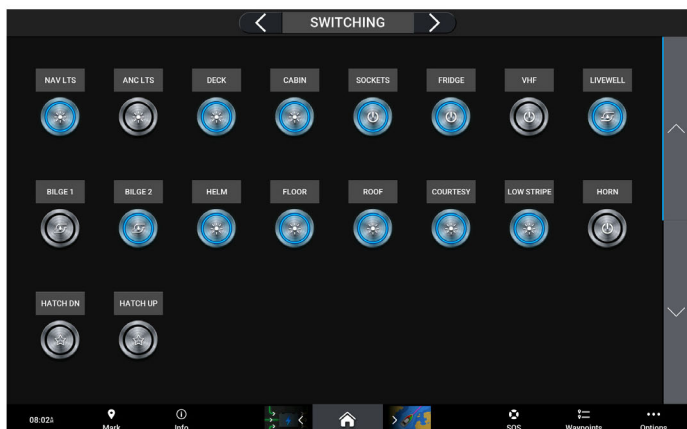
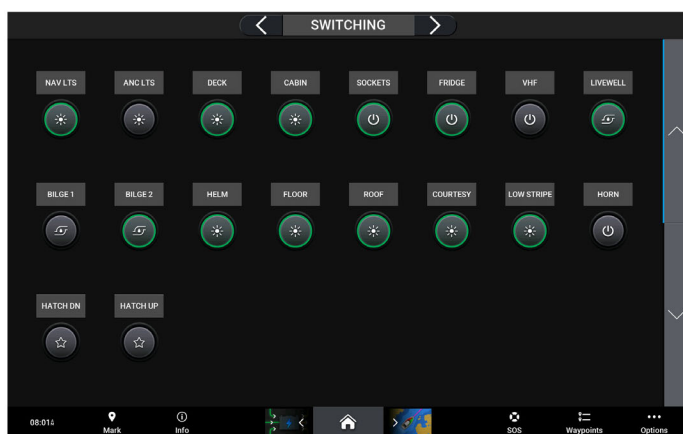
GARMIN BOAT SWITCH

DIGITAL SWITCHING SOLUTION

KEY FEATURES:

NEW	ALL-IN-ONE	All-in-one system replaces existing fuse box and switches on boats for easier control and operation of onboard functions
NEW	CONTROL AND PROTECTION	Offers control and protection of up to 20 circuits from your compatible GPSMAP® or ECHOMAP™ chartplotter rather than a physical button or switch
NEW	MANAGE MULTIPLE OUTPUT TYPES	Manage four different output types, including on/off toggle, dimming, momentary on and built-in timer for livewell pumps and bilge pumps
NEW	CUSTOMIZABLE	Position, name and remove switches on the easy-to-use chartplotter interface
NEW	TANK MONITORING	Built-in tank monitoring and calibration for as many as four tanks, including fuel, fresh water, gray water, black water and livewell
NEW	EASILY RETROFIT	Easily retrofit into existing boats without special tools, training or configuration by using included 18" flying leads and color-coded channel wires

SCREENSHOT EXAMPLES:



GARMIN BOAT SWITCH

DIGITAL SWITCHING SOLUTION

INCLUDED ACCESSORIES:



DESCRIPTION

Garmin Boat Switch Harness X1
for channels 1-16



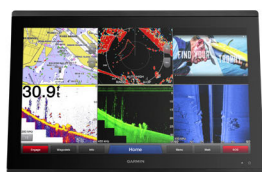
Garmin Boat Switch Harness X2
for channels 17-32

SPECIFICATIONS:

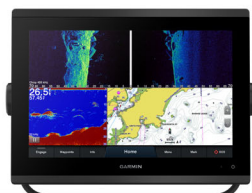
General	Unit only Dimensions (WxHxD):	9.1" x 4.2" x 1.5" (230x106x38 mm)	Analog input	Volt	3 @ 0-16 V +/-1%
	Unit only Weight :	14.1 oz (400 g)		Resistance	2 @ 0-1500 ohm +/- 5%
	Ambient temperature:	-20° C to +55° C	Power supply	Maximum current:	50A
	Enclosure water rating:	IP65		Power off current consumption:	60 mA
	Communication:	CAN-bus NMEA 2000® network, LEN-0		Supply voltage (12V)	9-16 VDC
Output	High side	13 ch 10A, 7 ch 5A	Connector	NMEA 2000	Micro 5-pin M12 male
Digital input	Ground contact switch input	15		Channels	Molex MX150 L 16 circuits
	Bilge pump monitor	2		Power terminal	M6 bolt

COMPATIBLE PRODUCT OVERVIEW:

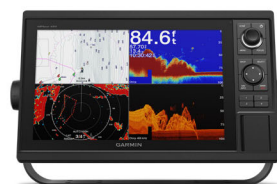
**GPSMAP® 8400/GPSMAP
8600 CHARTPLOTTER
SERIES**



**GPSMAP 7X3/GPSMAP
9X3/GPSMAP 12X3
CHARTPLOTTERS**



**GPSMAP 10X2/GPSMAP
12X2 CHARTPLOTTERS**



**ECHOMAP ULTRA
CHARTPLOTTER SERIES**



NMEA 2000 is a registered trademark of the National Marine Electronics Association.