

ECHOMAP™ UHD2 CHARTPLOTTERS



PRODUCT OVERVIEW:

Fish like a local with the 5" or 7" ECHOMAP UHD2 chartplotters. See clear, sharp fish arches with Garmin traditional sonar. Use ClearVü™ scanning sonar featuring vivid color palettes for clear, high-contrast views below your boat. Know the waters you're in as if you grew up fishing them by using built-in LakeVü™ g3 inland maps or BlueChart® g3 coastal charts. It also supports Garmin Navionics+™ and Garmin Navionics Vision+™ marine cartography. Use built-in Wi-Fi® connectivity to share sonar, waypoints and routes with another compatible Garmin chartplotter. You can also pair with the free all-in-one ActiveCaptain® app on a compatible smartphone for access to the OneChart™ feature, software updates and more.



IMAGE SHOWN IS USING NAVIONICS+ MAPPING

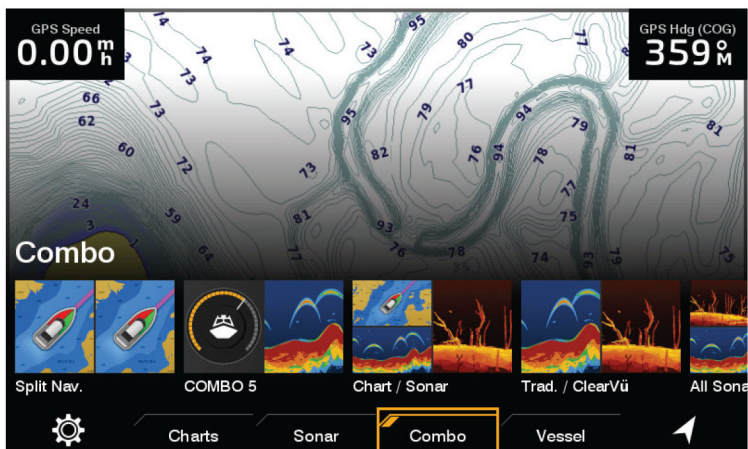
ECHOMAP™ UHD2 CHARTPLOTTERS

KEY FEATURES:

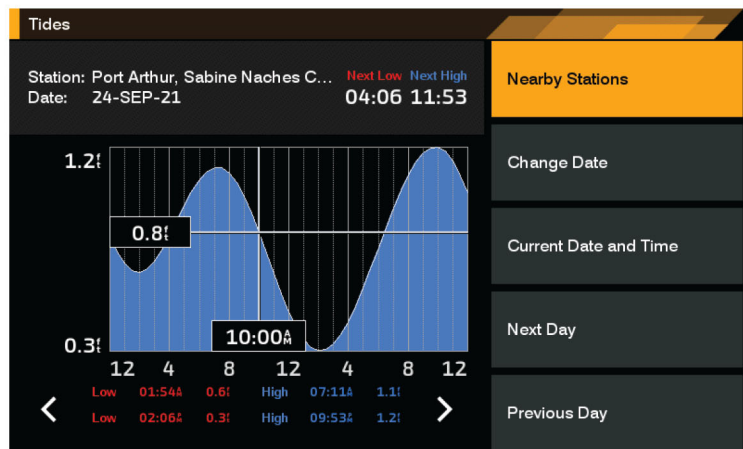
NEW	DESIGN	A new industrial design resembles the full ECHOMAP aesthetic of the higher-end ECHOMAP products.
NEW	USER INTERFACE (UI)	Both the 5" and 7" keyed products have a brand new UI with new, improved graphics and homepage, which look more modern and include additional features, settings and capabilities.
NEW	BUILT-IN Wi-Fi® CONNECTIVITY	Built-in Wi-Fi provides wireless sharing of sonar (traditional and ClearVü™) and user data (waypoints, routes) from one unit to another.
	VIVID SONAR	High-contrast scanning sonar color palettes make it easier to better distinguish fish and structure.
NEW	MAPPING	Enjoy built-in BlueChart® or LakeVü™ g3 cartography with Navionics® data; also supports Garmin Navionics+™ and Garmin Navionics Vision+™ mapping and daily updates.
	QUICKDRAW CONTOURS SOFTWARE	Quickdraw Contours software creates user-generated mapping for always-on fishing contours and bottom structure of users' favorite fishing spots.
	ACTIVECAPTAIN® APP	Get easy software updates and chart updates/upgrades via the ActiveCaptain app.

SCREENSHOTS:

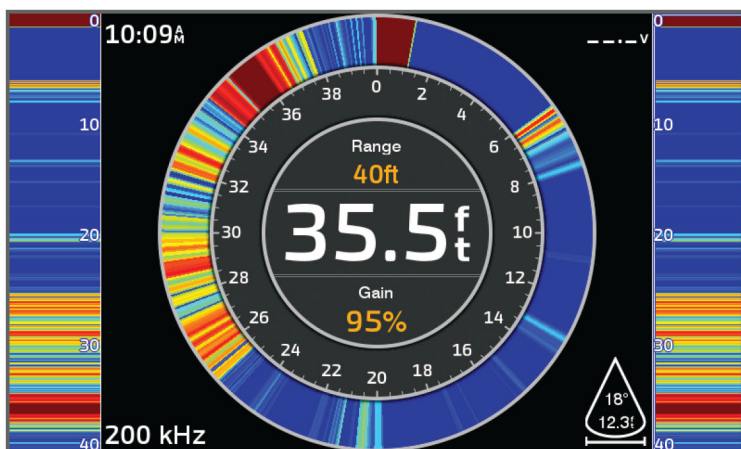
New UI



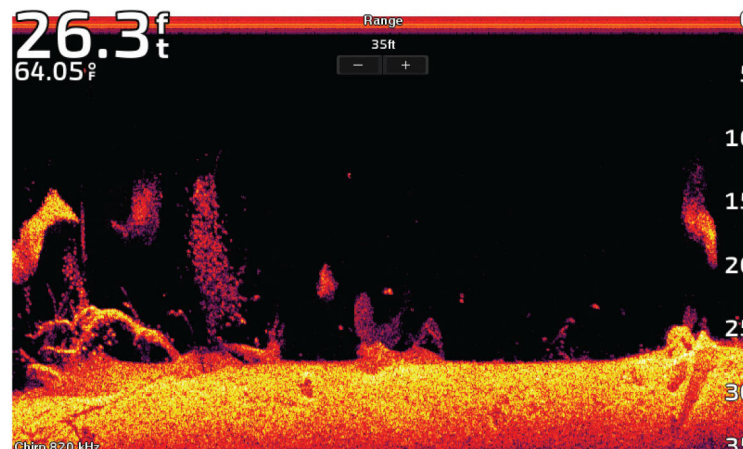
Tide Data



Flasher



Full-screen ClearVü



ECHOMAP™ UHD2 CHARTPLOTTERS

PRODUCT CONFIGURATIONS:

ECHOMAP UHD2 5" series

INCLUDES

ECHOMAP UHD2 5" chartplotter, GT20 transducer where noted, power/data cable, tilt/swivel mount, flush mount, hardware and documentation.



DESCRIPTION	SKU	UPC
ECHOMAP UHD2 52cv With worldwide basemap	010-02589-00	753759284558
ECHOMAP UHD2 52cv With worldwide basemap and GT20	010-02589-01	753759284565
ECHOMAP UHD2 53cv With U.S. LakeVü™ and GT20	010-02590-01	753759284589
ECHOMAP UHD2 54cv With BlueChart® g3	010-02591-00	753759284596
ECHOMAP UHD2 54cv With BlueChart g3 and GT20	010-02591-01	753759284602
ECHOMAP UHD2 55cv With Canada LakeVü and GT20	010-02592-00	753759284619

ECHOMAP UHD2 7" series

INCLUDES

ECHOMAP UHD2 7" chartplotter, GT20 transducer where noted, power/data cable, tilt/swivel mount, flush mount, hardware and documentation.



DESCRIPTION	SKU	UPC
ECHOMAP UHD2 72cv With worldwide basemap	010-02593-00	753759284640
ECHOMAP UHD2 72cv With worldwide basemap and GT20	010-02593-01	753759284657
ECHOMAP UHD2 73cv With U.S. LakeVü and GT20	010-02594-01	753759284664
ECHOMAP UHD2 74cv With BlueChart® g3 and GT20	010-02595-01	753759284671
ECHOMAP UHD2 75cv With Canada LakeVü and GT20	010-02596-00	753759284688

PRODUCT SPECIFICATIONS:

	ECHOMAP UHD2 5	ECHOMAP UHD2 7
Physical dimensions	188 x 122 x 61.5 mm (7.8" x 4.8" x 2.4")	232 x 143.1 x 67 mm (9.1" x 5.6" x 2.6")
Display size	5" dia 109 x 65.8 mm (4.3" x 2.7")	7" dia 109 x 65.8 mm (4.3" x 2.6")
Resolution	800 x 480 pixels	
Weight	1.1 lbs (0.5 kg)	1.5 lbs (0.7 kg)
Water rating	IPX7	
Has built-in receiver	Yes	
Built-in receiver Hz	5 Hz	
BlueChart g3 and Bluechart® g3 Vision	Yes	
LakeVü g3 and LakeVü g3 Ultra	Yes	
Garmin Navionics+™ and Garmin Navionics Vision+™	Yes	
Auto Guidance technology	Yes, with supported mapping	
Card slot	1 microSD™ card; 32 GB maximum size	
Waypoints	5,000	
Track points	50,000	
Tracks	50 saved tracks	
Routes	100	
Sailing features	Yes	
Built-in sonar	Yes	
Traditional	Yes	
ClearVü™ sonar	Yes	
Sonar frequencies	Traditional: 50/200, 77/200, 83/200 kHz Single channel CHIRP: from 40 to 250 kHz Garmin ClearVü: 260/455/800/1200 kHz	
4-pin transducer ports	Yes, 1	
Wi-Fi® connectivity (local)	Yes	