

ECHOMAP™ UHD2 CHARTPLOTTERS



PRODUCT OVERVIEW:

The ECHOMAP™ UHD2 touchscreen with keyed-assist chartplotter knows the water better than a local. Its bright, sunlight-readable display offers improved detail and clarity. See clear, sharp fish arches with Garmin traditional sonar. ClearVü™ and SideVü™ scanning sonars feature vivid color palettes for clear, high-contrast views all around your boat. ECHOMAP UHD2 also supports LiveScope™ sonar systems. Navigate the waters with built-in Garmin Navionics+™ cartography, which comes with a 1-year subscription to daily chart updates. Built-in Wi-Fi® connectivity lets you wirelessly share sonar, waypoints and routes with another ECHOMAP UHD2 chartplotter. Wherever you drop your line, get improved position accuracy, particularly in areas where signals are reflected or weak, with multi-band GPS. You can also pair with the free all-in-one ActiveCaptain® app on your compatible smartphone for access to the OneChart™ feature, software updates and more. The chartplotter supports NMEA 2000® networks to connect your compatible autopilots, digital switching, music and more to view all on one screen.



ECHOMAP™ UHD2 CHARTPLOTTERS

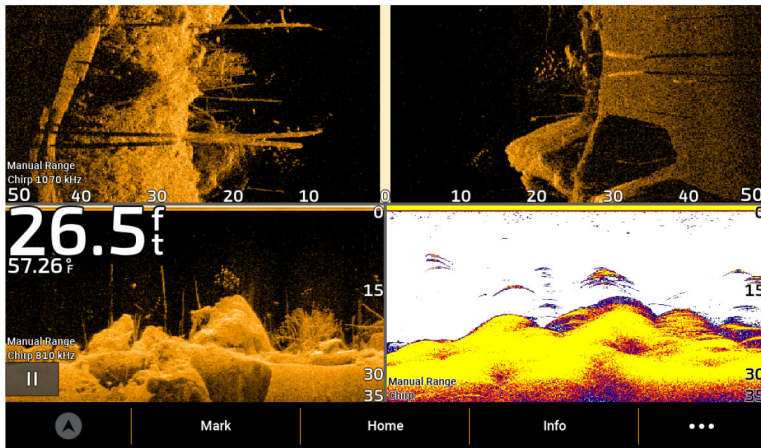
KEY FEATURES:

	DISPLAY	Easy-to-use touchscreen with keyed assist with a bright, sunlight-readable display
NEW	IMPROVED SCREEN RESOLUTION	9" units now feature increased screen resolution (1024 x 600) when compared to previous models
NEW	ULTRA HIGH- DEFINITION SONAR	See below your boat with Garmin traditional, ClearVü™ and SideVü™ scanning sonars with vivid color palettes. Compatible with LiveScope™ live scanning sonar
NEW	WIRELESS NETWORKING	Built-in Wi-Fi® connectivity lets you wirelessly share sonar, waypoints and routes with another ECHOMAP UHD2 chartplotter
NEW	BUILT-IN MAPPING	Select chartplotters come with built-in Garmin Navionics+ mapping with an included one year subscription to daily updates. Auto Guidance+ technology ¹ available to download via the Active Captain app for chartplotters with built in maps
	MULTI-BAND GPS	Includes multi-band GPS, which utilizes multiple frequencies for improved position accuracy, particularly in areas where signals are reflected or weak
	EXPAND YOUR SYSTEM	Supports wired NMEA 2000® network connectivity
	ACTIVECAPTAIN® APP	Pair with the free all-in-one ActiveCaptain® app on your compatible smartphone for access to the OneChart™ feature, software updates and more
	TROLLING MOTOR INTEGRATION	Wirelessly connects to your Force® trolling motor to create and follow routes, navigate to waypoints, control speed, check battery life and more

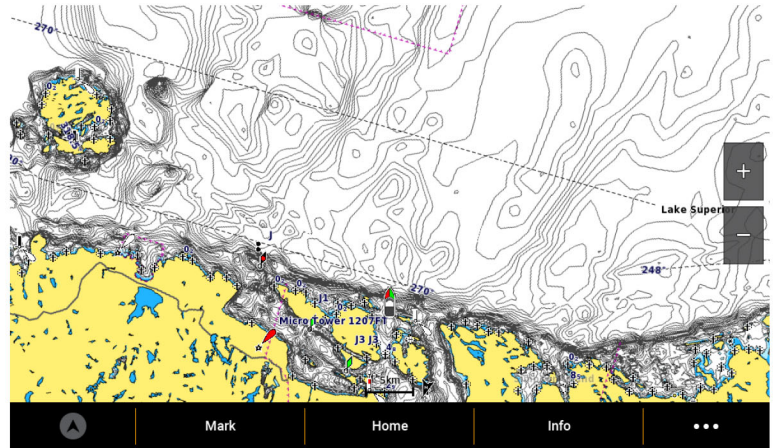
¹Auto Guidance+ is for planning purposes only and does not replace safe navigation operations

SCREENSHOTS:

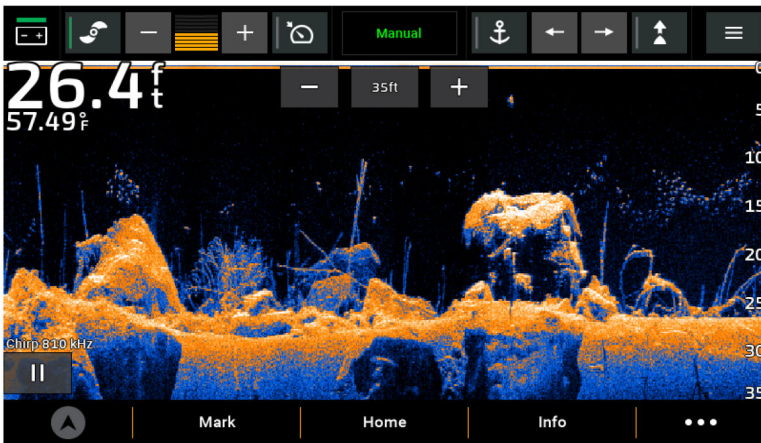
Ultra High-Definition Sonar



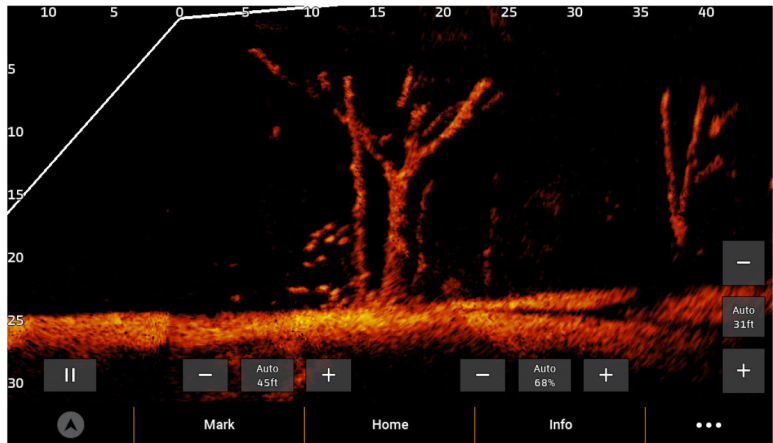
Garmin Navionics+ Mapping



Force Trolling Motor Compatible



LiveScope Compatible



ECHOMAP™ UHD2 CHARTPLOTTERS

PRODUCT SPECIFICATIONS:

	ECHOMAP™ UHD2 6"	ECHOMAP™ UHD2 7"	ECHOMAP™ UHD2 9"
Physical dimensions (W x H x D)	8.1" x 5.2" x 2.6" (20.6 x 13.1 x 6.7 cm)	8.6" x 5.6" x 3.2" (21.8 x 14.2 x 8.1 cm)	10.4" x 6.5" x 3.2" (26.4 x 16.6 x 8.0cm)
Display size (W x H, Diagonal)	5.4" x 3.1", 6.2" (13.8 x 7.8, 15.7 cm)	6.1" x 3.4", 7.0" (15.5 x 8.7, 17.8 cm)	7.8" x 4.5", 9.0" (19.8 x 11.5, 22.9 cm)
Resolution	800 x 480 pixels	800 x 480 pixels	1024 x 600 pixels
Weight	1.8 lbs (0.8 kg)	2.2 lbs (1.0 kg)	2.9 lbs (1.3 kg)
Water rating	IPX7	IPX7	IPX7
Built-in receiver	Yes	Yes	Yes
Built-in receiver Hz	10 Hz	10 Hz	10 Hz
BlueChart® g3 and Bluechart® g3 Vision	No	No	No
Garmin LakeVü™ g3 and Garmin LakeVü™ g3 Ultra	No	No	No
Garmin Navionics+™	Yes	Yes	Yes
Auto Guidance technology	Yes, with supported mapping	Yes, with supported mapping	Yes, with supported mapping
Card slot	1 microSD card; 32 GB maximum size	1 microSD card; 32 GB maximum size	1 microSD card; 32 GB maximum size
Waypoints	5,000	5,000	5,000
Track points	50,000	50,000	50,000
Tracks	50 saved tracks	50 saved tracks	50 saved tracks
Routes	100	100	100
Sailing features	Yes	Yes	Yes
Built-in sonar	Yes	Yes	Yes
Traditional	Yes	Yes	Yes
ClearVü™ and SideVü™ sonar	Yes	Yes	Yes
Sonar frequencies	Traditional: Single Channel CHIRP, 50/77/83/200 kHz, L, M, H CHIRP Garmin ClearVü and SideVü: 260/455/800/1000/1200 kHz	Traditional: Single Channel CHIRP, 50/77/83/200 kHz, L, M, H CHIRP Garmin ClearVü and SideVü: 260/455/800/1000/1200 kHz	Traditional: Single Channel CHIRP, 50/77/83/200 kHz, L, M, H CHIRP Garmin ClearVü and SideVü: 260/455/800/1000/1200 kHz
4-pin transducer ports	No	No	No
Wi-Fi® connectivity (local)	Yes	Yes	Yes

PACKAGING SPECIFICATIONS:

	ECHOMAP UHD2 6" chartplotter without transducer	ECHOMAP UHD2 6" chartplotter with transducer	ECHOMAP UHD2 7" chartplotter without transducer	ECHOMAP UHD2 7" chartplotter with transducer	ECHOMAP UHD2 9" chartplotter without transducer	ECHOMAP UHD2 9" chartplotter with transducer
Gift box dimensions: (W x H x D)	11.4" x 7.9" x 8.2" (28.9 x 20.1 x 20.8 cm)	13.7 x 7.9" x 8.2" (34.8 x 20.1 x 20.8 cm)	11.4" x 7.9" x 8.2" (28.9 x 20.1 x 20.8 cm)	13.7 x 7.9" x 8.2" (34.8 x 20.1 x 20.8 cm)	13.3 x 7.9" x 10.1" (33.8 x 20.1 x 52.8 cm)	13.7 x 7.9" x 10.1" (34.8 x 20.1 x 52.8 cm)
Gift box weight:	3.9 lbs (1.8 kg)	5.8 lbs (2.6 kg)	4.3 lbs (1.9 kg)	6.2 lbs (2.8 kg)	5.3 lbs (2.4 kg)	7.9 lbs (3.6 kg)
Master carton dimensions: (W x H x D)	24.6" x 17.3" x 12.3" (62.5 x 43.9 x 31.2 cm)	24.6" x 17.3" x 14.6" (62.5 x 43.9 x 37.1 cm)	24.6" x 17.3" x 12.3" (62.5 x 43.9 x 31.2 cm)	24.6" x 17.3" x 14.6" (62.5 x 43.9 x 37.1 cm)	21.1" x 13.9" x 17.2" (53.6 x 35.3 x 43.7 cm)	21.1" x 15.8" x 17.2" (53.6 x 40.1 x 43.7 cm)
Master carton weight:	23.4 lbs (10.6 kg)	34.8 lbs (15.8 kg)	25.8 lbs (11.7 kg)	37.2 lbs (16.9 kg)	21.2 lbs (9.6 kg)	31.6 lbs (14.3 kg)
Master carton quantity:	6				4	