



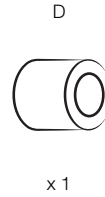
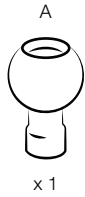
**Please read through these instructions
Carefully prior to installation.**



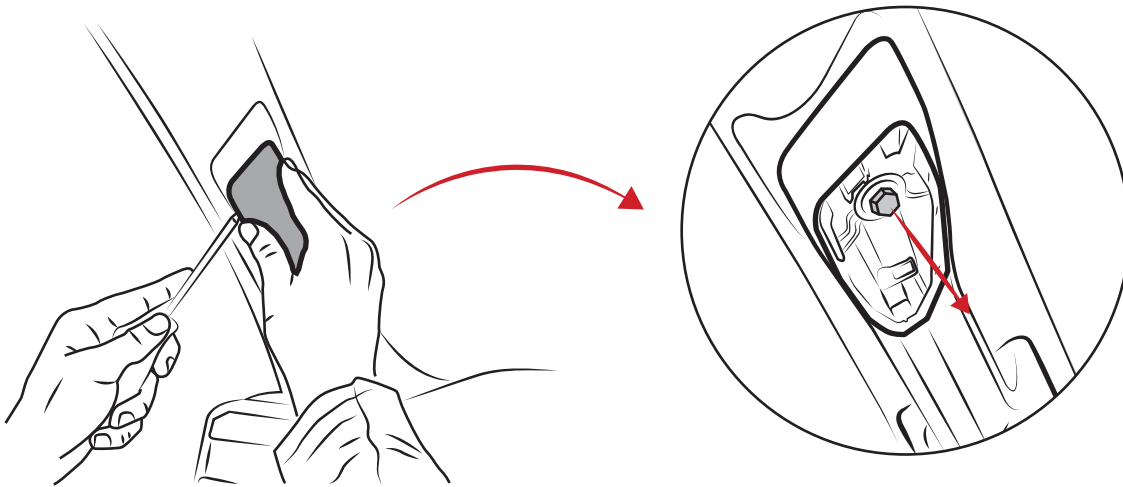
Scan or click to watch the video instructions

Parts Index

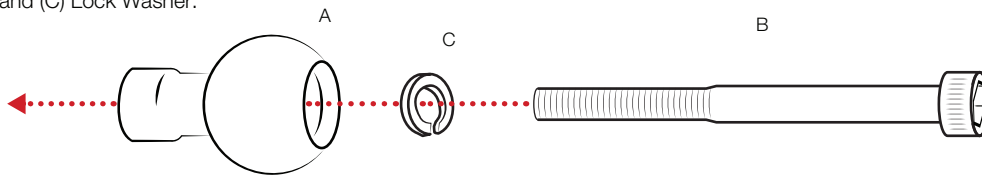
* Not to scale



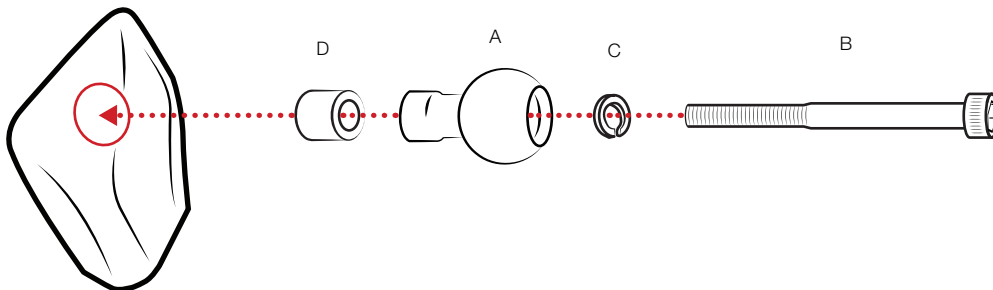
- 1 With a plastic pry tool, carefully pry the grab handle panel open to gain access to the existing grab handle bolt. Remove the existing bolt with a 10mm socket.



- 2 With the original grab handle bolt removed, attach the (A) RAM® Ball with (B) Bolt and (C) Lock Washer.



For a cleaner look, drill a hole into the grab handle panel to accommodate the (D) Spacer.



RMR-INS-B-367-M6



Safety Precaution

Do not install this product near or over an airbag deployment area or in a location that obstructs the driver's vision or interferes with vehicle operation. National Products, Inc does not assume responsibility or liability for any such personal injury, death or property damage.