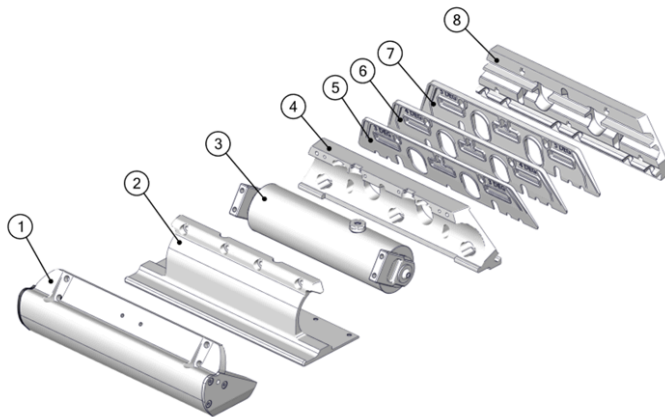


## 4. Inventory Parts

Please review all parts included before proceeding. The following figure and table describe all parts included in the assembly. Review parts and ensure all parts are present before starting the installation procedure.

Components shown are per Controller. Dual Actuator systems will have two (2) times the components listed, and Quad Actuator systems will have four (4) times the components listed.



1. Blade

2. Seal Plate

3. Actuator

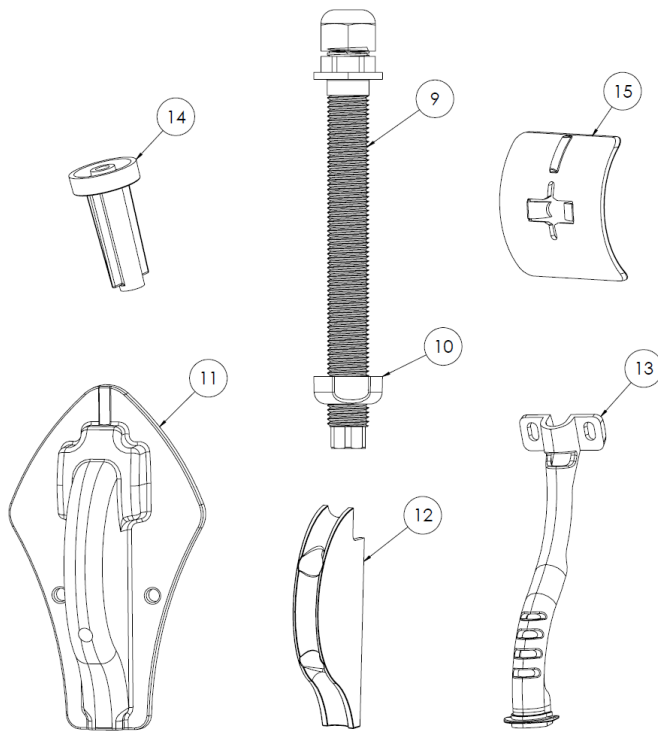
4. Actuator Plate

5. 3 Degree Wedge Plate

6. 4 Degree Wedge Plate

7. 5 Degree Wedge Plate

8. Transom Plate



9. Cable Gland Tube

10. Cable Gland Nut

11. Outer Cable Guide

12. Inner Cable Guide

13. Cable Support Guide

14. Drill Guide Tube

15. Drill Guide Follower

Hardware counts below are given in the format: **x[QUAD ACTUATOR] / [DUAL ACTUATOR]**

#### Wedge Pack Hardware

#### Positioning Screws



**x3 / 5**

M8-1.25 X 35 mm  
Hex Head Bolt



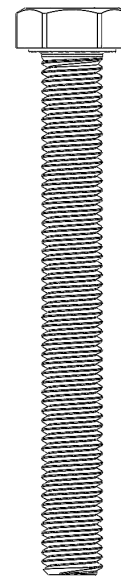
**x3 / 5**

M8-1.25 X 40 mm  
Hex Head Bolt



**x2 / 4**

M8-1.25 X 55 mm  
Hex Head Bolt



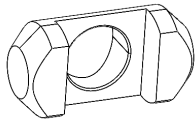
**x2 / 4**

M8-1.25 X 75 mm  
Hex Head Bolt



**x3**

Phillips No. 8 x  
1.25 in. Screw



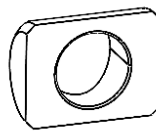
**x5 / 9**

M8 Cylindrical  
Washer for Hex  
Head



**x5 / 9**

Transom Plate  
Bolt Cover



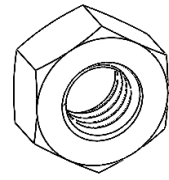
**x5 / 9**

M8 Cylindrical  
Washer



**x5 / 9**

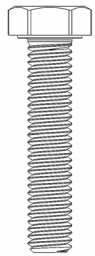
M8 Wedglock  
Washer



**x5 / 9**

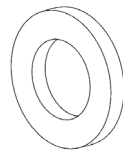
M8-1.25 Hex Nut

### Seal Plate Hardware



**x4 / 6**

M6-1.0 x 30 mm  
Hex Head Bolt



**x4 / 6**

M6 Washer



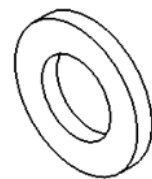
**x6 / 10**

M6-1.0 x 16 mm  
Flathead Screw



**x4**

M8-1.25 X 30 mm  
Hex Head Bolt



**x4**

M8 Washer

### Cable Routing Hardware



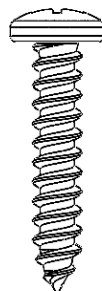
**x2**

Phillips No. 8 x  
0.75 in. Screw



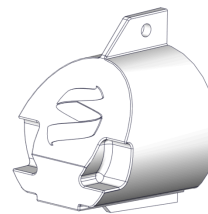
**x2**

Phillips No. 8 x 1.5  
in. Screw



**x2**

Phillips No. 10 x  
1.0 in. Screw



**x0 / 2**

Endcaps (Only  
included with  
Dual Actuator  
systems)

**Note: Vibra-tite 122 threadlocker will also be included in the packaging.**