

INSTALLATION INSTRUCTIONS

SEMI-RIGID RUB RAIL KIT

Removal of Old Rub Rail and Hull Preparation

- 1) Remove the end caps.
- 2) Remove the insert and the stiffening strip if there is one.
- 3) Remove the screws or rivets that attach the rub rail to the hull. If the rub rail is fastened with pop rivets, drill out the rivet head and push the shaft in, to prevent rattling.
- 4) Remove the rub rail.
- 5) Use a putty knife to scrape off any old sealant, being careful not to scratch the gelcoat (it is unnecessary to remove all the old sealant, just the excess).
- 6) Fill all holes with sealant/3M 5200 (you will be drilling new holes for the new rub rail).
- 7) Let the sealant cure according to the manufacturers suggestions.



Step 1



Step 2



Step 3



Step 4



Step 5



Step 6

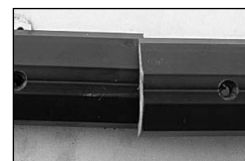
Semi-Rigid Vinyl Rub Rail Installation

Semi-Rigid Rub Rail kits are available in 30', 50' and 70' kits and include insert, screws and end caps. When cutting, use a miter box to ensure the rub rail you are installing has a straight end.

- 1) Place masking tape above or below where the rub rail will go and mark for the new holes.
Note: When a screw is properly installed into the hole, the screw head should sit just below the surface.
- 2) Start in the middle of the transom, or if you are not going around the transom, start at the corner of the transom. Have a helper unroll about 4' of rub rail and take the curve out of it.
- 3) Starting 12" from the end, drill through the predrilled rub rail holes into the boat, or drill and countersink the rub rail. Coat the screw threads with Silicone or 3M 5200 and install the screw.
- 4) Continue uncoiling, straightening and drilling or drilling and countersinking. Coat the threads and work in one direction around the boat until you have installed the first coil. Leave the last 12" unfastened. We will finish this in step 8.
- 5) When you have to bend the rub rail around a corner, move the heat gun back and forth to prevent overheating the rub rail.
- 6) Straighten out about 4' of the next coil. Overlap the end of the last coil by 1/8" and attach the first screw approximately 12" from the end. Leave these two ends loose for now.
- 7) Continue installing the rub rail until you come to where you started at the transom or at the corner of the transom leaving the last 12" unfastened. If you are ending the rub rail at the corner of the transom or motor well, you can now install the corner end caps.
- 8) To make splices, pull the two sections towards you until they meet and push in until they snap into place. Drill through the rub rail and install a screw 1" & 6" from each end.



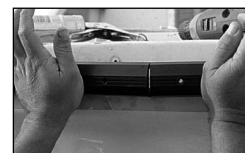
Step 5



Step 6



Step 7



Step 8



TACO PRO TIPS:
Once the rub rail comes in contact with the hull stop tightening the screw!

TACO PRO TIPS:
When making splices, make sure the ends are cut straight and smooth.

Flexible Vinyl Insert Installation

V12-4144, V12-9809

- 1) These flexible vinyl inserts can be installed at room temperature.
- 2) Squeeze the insert between your fingers and insert it into the channel of the rub rail until the entire insert has been installed.
- 3) Tapping it with a rubber mallet will help set the insert.

End Cap Installation

There are two types of end caps.

- 1) In-line end caps are installed on the same surface as the rub rail.
- 2) Corner end caps are used when a rub rail ends at the transom. Corner end caps are installed on the transom with the cap extending out the side to cap the rub rail.

