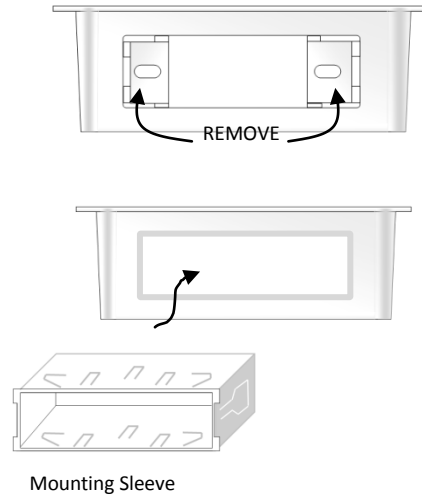


Mounting instructions

For DIN style Radios with Sleeve Mount:

Use a utility knife to remove the Post Mount inserts.
Insert the Mounting Sleeve and bend the Securing Tabs to hold the Sleeve in place

Follow the Manufactures directions for mounting and electrical hookups



For Post style Mount radios:

Leave the inserts in place. Follow the manufactures directions for mounting and electrical hookup

Mounting Positions

The Poly Planar RH10 can be mounted on any overhead Panel, Shelf top or under dash surface that provides a flat surface of sufficient strength to fasten to .

After mounting the radio, use the Self Tapping screws provided to attach the housing. Make sure the position does not obstruct the operators view or control.

