

# Maxillume x500 Installation Instructions

Models: 101353,

## **WARNING**

**WARNING:** Risk of electric shock, disconnect power at fuse or circuit breaker before installing or servicing

**WARNING:** Risk of fire / electric shock. Installation, inspection and maintenance by a qualified electrician only.

**WARNING:** Risk of fire / electric shock. The floodlight luminaire must be supplied by a wiring system with an equipment grounding conductor. DO NOT use the wall mount bracket as ground.

**WARNING:** For your safety read and understand instructions before starting installation. Before wiring to power supply branch circuit, turn off electricity at the fuse or circuit breaker box. Before attempting any installation check your applicable electric code. This code sets the wiring standards and should be carefully studied before starting.

**Note:** All statements, technical information and recommendations contained herein are based on information and tests we believe to be reliable. The accuracy or completeness thereof are not guaranteed. In accordance with “Terms and Conditions of Sale”, and since conditions of use are outside our control, the purchaser should determine the suitability of the product for his intended use and assumes all risk and liability whatsoever in connection therewith.

### **IMPORTANT:**

Read carefully before installing fixture. Retain for future reference.

**APPLICATION:** Maxillume x500 LED Floodlights are designed for outdoor wet locations, where moisture, dirt, corrosion, vibration may be present. The models listed on the top of this instruction sheet fully meet the requirements of UL1598 Luminaires.

Listed models of Maxillume x500 LED Floodlights can be operated at the following voltages:

100VAC - 240VAC 50/60Hz

## Installation

Note: This fixture is suitable for installation in wet locations.

1. Determine the mounting location of the bracket using the bolt hole pattern (Figure 1.).
2. Mount the bracket using four (3) 1/2" bolts or (4) 3/8" carriage bolts.

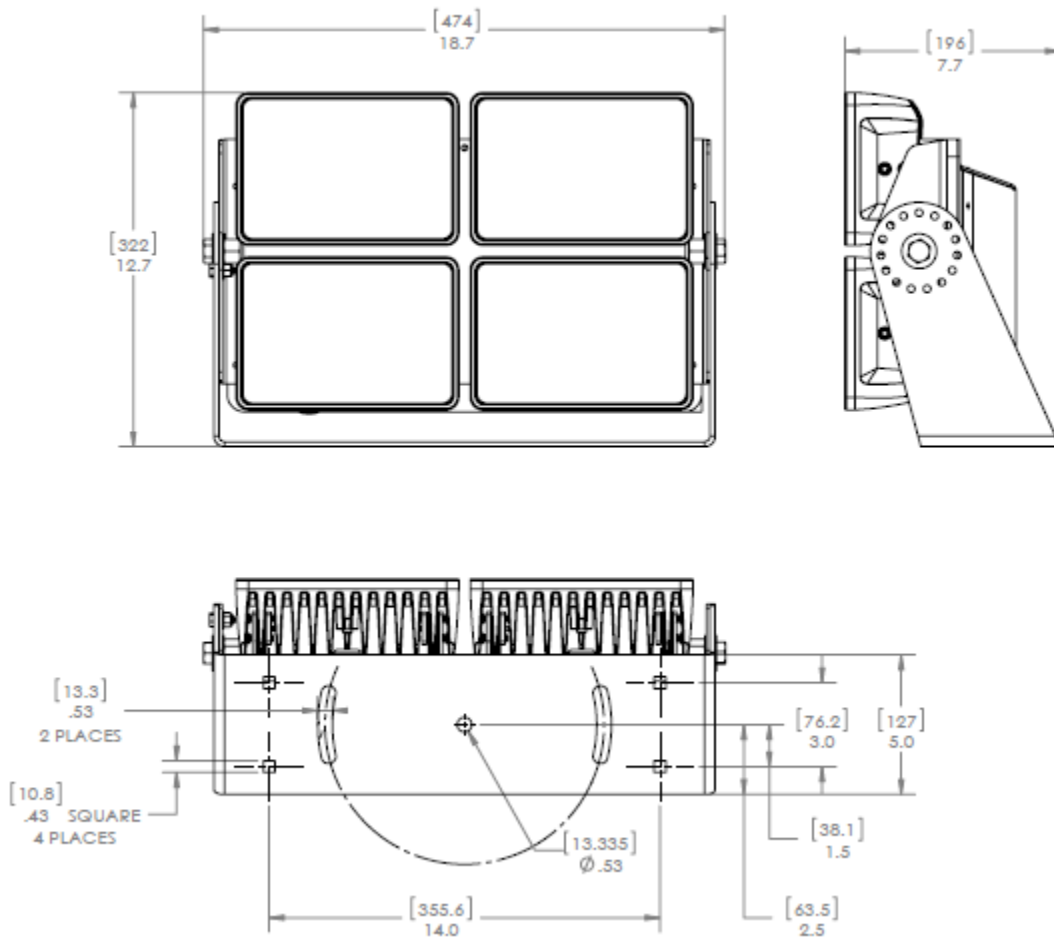


Figure 1

3. To make vertical adjustment, remove the smaller ¼-20 hex bolt on each side of the yoke. Adjust rotation for desired angle. Find nearest hole combination that lines up to replace bolt and lock angle in place. Reinstall bolts on both sides of luminaire and tighten to 80-100 in-lbs.

Maxillume x500 LED Floodlights are designed to be oriented as shown in Figures 2 and 3. Do not install in recessed or enclosed space. Due to the heat generated from the light the installation location must allow for the free movement of air on all sides of the light.

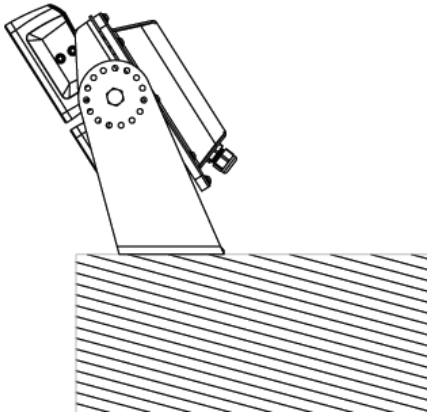


Figure 3

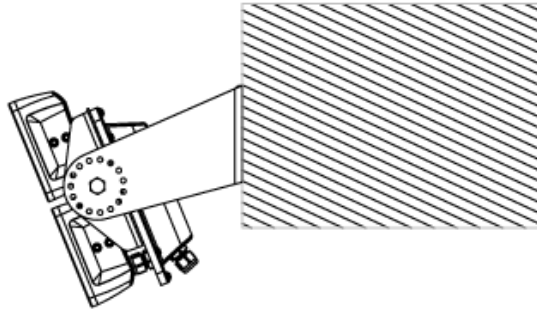


Figure 2

### Electrical Connection

**Note:** If fixture is to be switched, make sure black supply wire (Line in Conductor) is properly connected to the switch. DO NOT connect the white wire (Neutral Conductor) to the switch. DO NOT connect light to a dimmer.

**Note:** Provide electrical service according to the electric code for your specific application from a suitable junction box.

1. All components in the fixture are prewired so connection only needs to be made at the end of the supplied pigtail. The supplied pigtail cable may be shortened to fit the application. Pigtail must be terminated within junction box.

1. Route pigtail from luminaire to supply junction box leaving appropriate service and rotation loop while securing in place according to applicable electrical code.

2. Supply cable diameter is .370 inches [9.4 mm]. Use correctly sized sealed cord grip to seal and strain relief supply connection.

3. First wire ground (green conductor), then the neutral (white conductor), and finally the line in (black conductor) to branch circuit lead wires (or terminals) using methods that comply with all applicable electric codes. Ensure the equipment grounding conductor is terminated. Tighten all electrical connections.

## **MAINTENANCE**

- Perform visual, electrical, and mechanical inspections on a regular basis. The environment and frequency of use should determine this. However, it is recommended that checks be made at least once a year. We recommend an Electrical Preventive Maintenance Program as described in the National Fire Protection Association Bulletin NFPA 70B: Recommended Practice for Electrical Equipment Maintenance ([www.nfpa.org](http://www.nfpa.org)).
- The lens should be cleaned periodically to ensure continued lighting performance. To clean, wipe the lens with a clean damp cloth. If this is not sufficient, use a mild soap or a liquid cleaner. Do not use an abrasive, strong alkaline, or acid cleaner. Damage may result.
- Visually check for undue heating evidenced by discoloration of wires or other components, damaged parts, or leakage evidenced by water or corrosion in the interior. Replace all worn, damaged, or malfunctioning components and clean gasket seals before putting the luminaire back into service.
- Electrically check to make sure that all connections are clean and tight.
- Mechanically check that all parts are properly assembled.

## Replacement Parts

Lumitec LED Floodlights are designed to provide years of reliable lighting performance. However, should the need for replacement parts arise, they are available through Lumitec Lighting. Contact us at [www.lumiteclighting.com](http://www.lumiteclighting.com).

Please refer to <http://lumiteclighting.com/support/warranty/> for warranties and claims.

The product is warranted to be free from defects in workmanship and materials for a period of three (3) years from the date of original purchase.

Lumitec is not responsible for product failure caused by abuse, neglect, improper installation, or failure in applications other than those for which it was designed, intended, and marketed. Lumitec, Inc. assumes no responsibility whatsoever for any damage, loss, or injury that may result from the incorrect installation of this product, including but not limited to structural damage due to water intrusion, electrical malfunction or vessel sinking when used in marine applications.

Should your Lumitec product prove defective during the warranty period, promptly notify Lumitec for a return authorization number and return product with freight prepaid. Lumitec will, at its option, repair or replace the product or defective portion without charge for parts or labor, or, at Lumitec's option, refund purchase price. Products repaired or replaced under this warranty shall be warranted for the unexpired portion of the warranty applying to the original product(s). No warranty or affirmation of fact, express or implied, other than as set forth in the limited warranty statement above is made or authorized by Lumitec, Inc. Any liability for consequential and incidental damages is expressly disclaimed. Lumitec liability in all events is limited to, and shall not exceed, the purchase price paid.

Any alterations, modifications or changes of any type made to the Maxillume X500 or to any component thereof will void the warranty.

Manufacture Corporate Headquarters:

Lumitec

1405 Poinsettia Drive, Suite 10

Delray Beach, FL 33444

Phone: (561) 272-9840

Fax: (561) 272-9839

Email: [info@lumiteclighting.com](mailto:info@lumiteclighting.com)

Web: [www.lumiteclighting.com](http://www.lumiteclighting.com)