



Accent Pod RGB Kit

HE-4TLRGBK / HE-8TLRGBK

(4 Pod Kit)

(8 Pod Kit)

HE-4MLRGBK / HE-8MLRGBK

(4 Pod Kit)

(8 Pod Kit)



Instructions:

Mount RGB pods and control box in a secure location. Control box has to be wired into a 12V system. RED wire is 12V positive, BLACK wire is to be grounded to a metal surface free of paint.

Ensure extension cables are free of moving parts and pinching points.

Attach RGB pods to the connectors coming from the control box and secure them by hand tightening the waterproof connectors.

Download app from the App Store or the Play Store to control the pods.

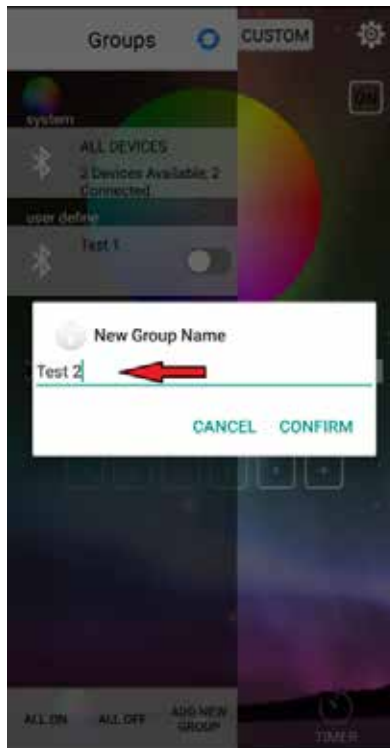
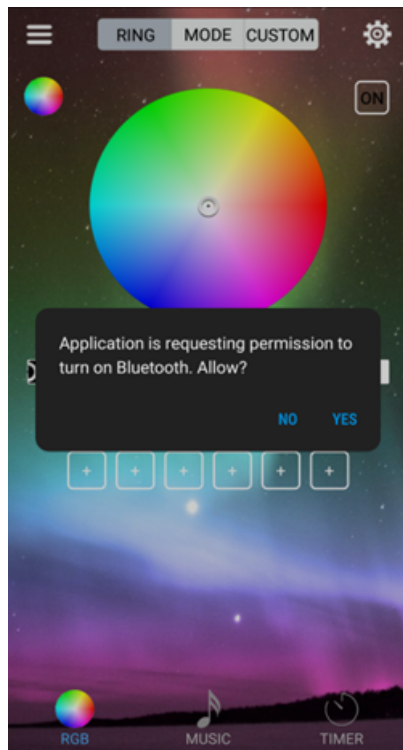
ANDROID users - Turn Bluetooth **OFF** on your device if on; the app will prompt you to enable it through the app.

IOS users –Turn **ON** Bluetooth before entering app; if not the app will prompt you to do so and controls will not work.

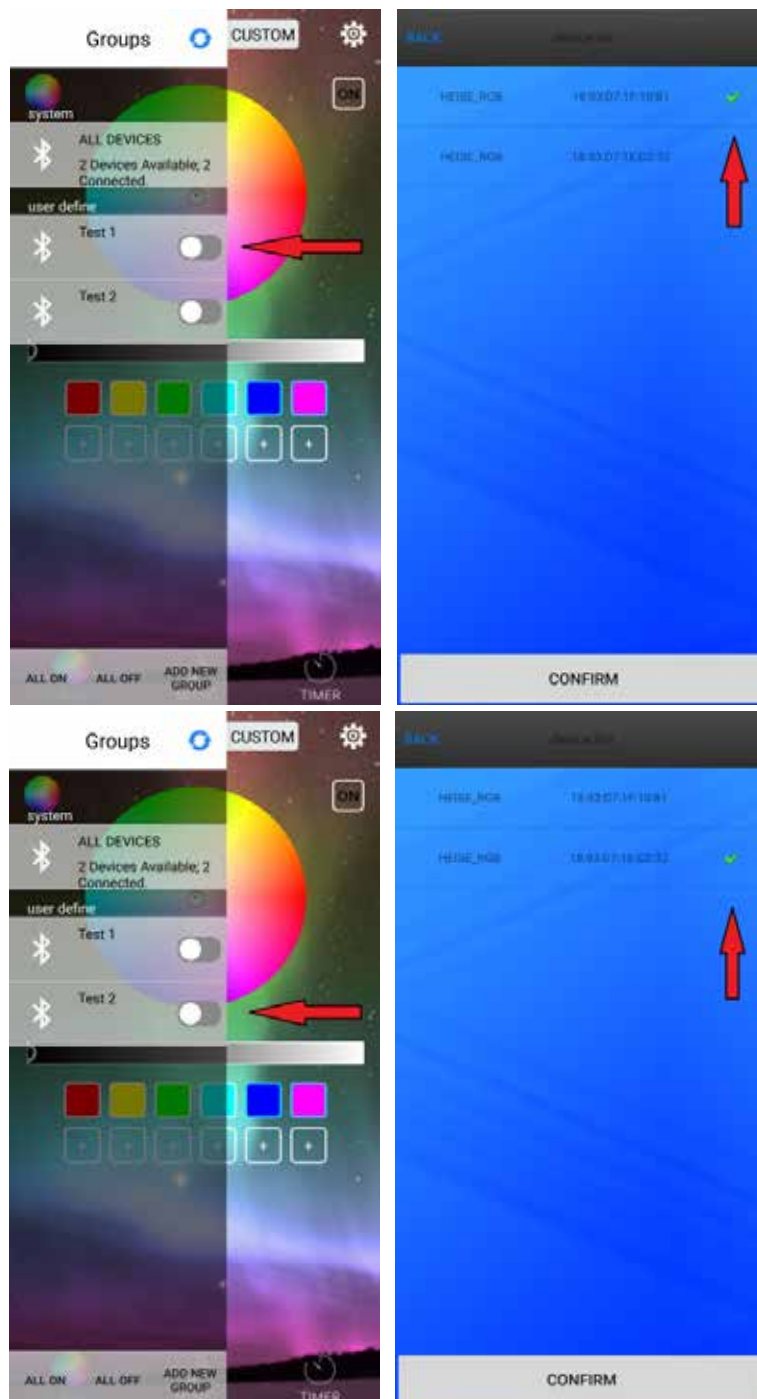
The app, when connected will control single or multiple control boxes without setting up a “GROUP”. A group is ONLY needed when multiple control boxes are connected and the user wants separate control over those boxes.

Without a “GROUP” the control boxes will all work together under the same connection.

When adding a “GROUP” to control **MULTIPLE CONTROL BOXES**, open app and select “Add New Group” (located at the bottom of the app), app will request permission to turn on Bluetooth, click YES. Also give the new group(s) a name and confirm it.

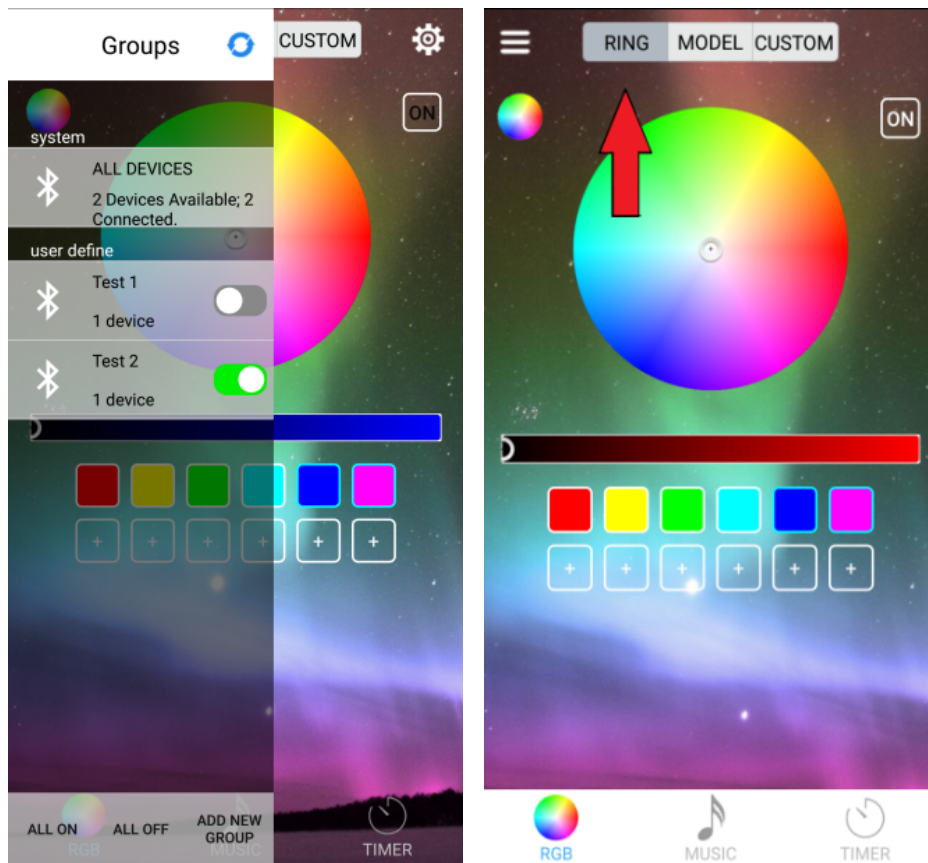


11. Click on the name that was previously assigned to the new group(s) and select the HEISE RGB from the device list that matches the first group.



12. You should now see under the All Devices section that connection was made and how many devices are connected.
13. Select the desired group name. Then click on the color wheel to illuminate the Accent Pod lights, this will confirm that the Bluetooth connection is made with that group. **Repeat those steps for each group.**

14. To the right side of the screen a color wheel icon will be seen, select it to open the “Ring” tab which contains a brightness slider and color wheel with six preset colors as well as six more custom colors spots that can be added by user. **NOTE:** on **IOS** there are ONLY six custom color spots that can be added by user.



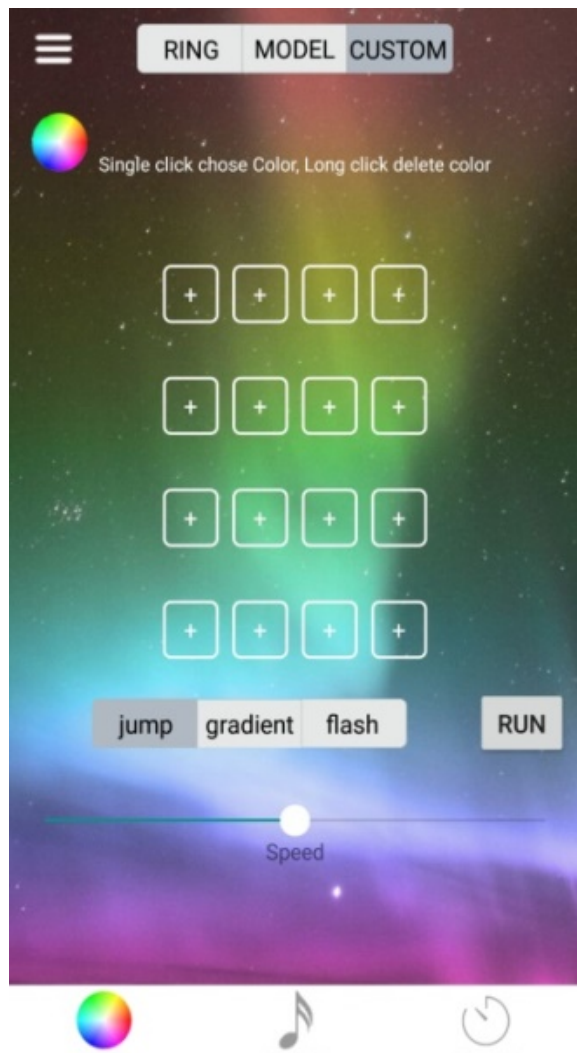
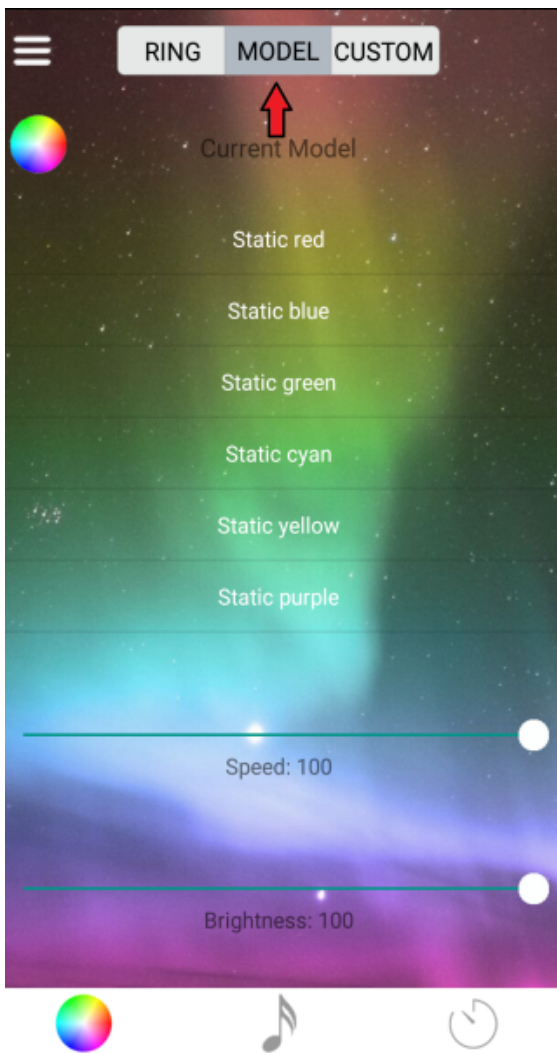
15. If the color wheel icon is clicked for a **second time** it will open up a “**Brightness**” menu. In this menu there are two tabs to select from a “**Ring**” and “**Model**” mode.
16. The “**Ring**” mode contains a black and white color wheel which can be adjusted in 1% increments. The “**Model**” mode contains a quick percentage menu ranging from 0% to 100% in 10% increments.



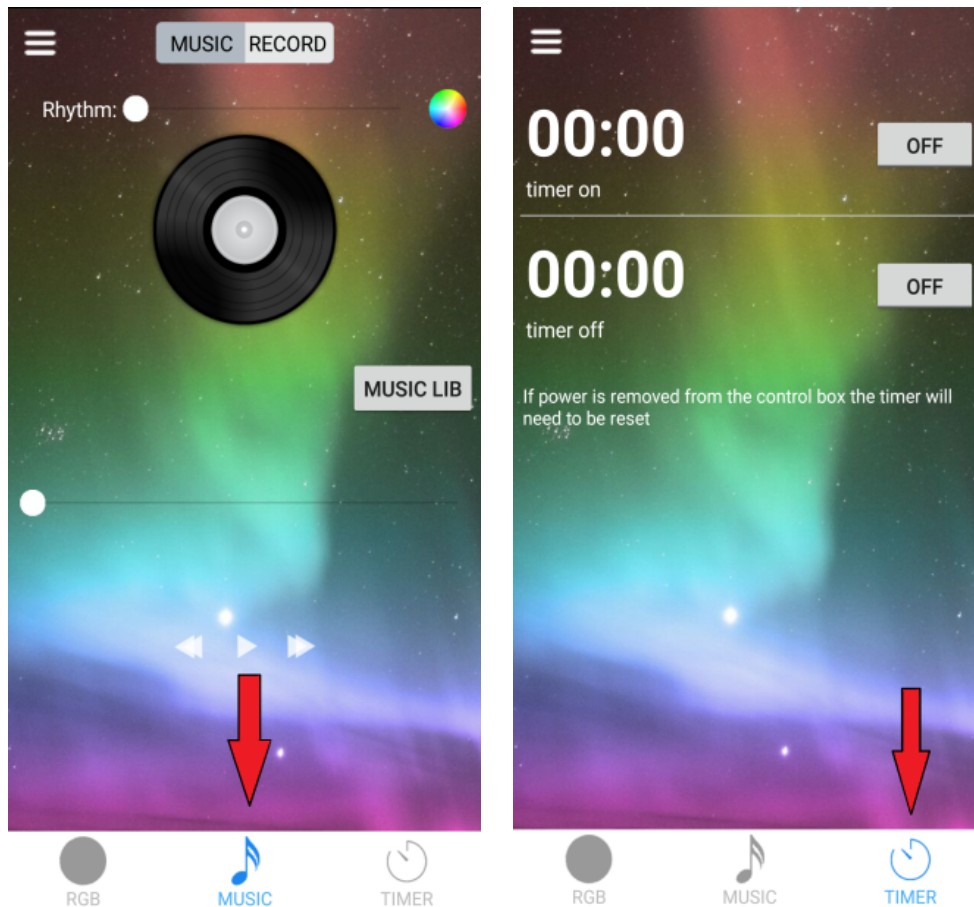
17. If the color wheel icon is clicked for a **third time** it will open up a “Warm/Cool” menu. In this menu there is two tabs to select from a “Ring” and “Model” mode.
18. The “Ring” mode contains a warm/cool color wheel that can be adjusted in 1% increments and brightness slider. The “Model” mode contains a quick percentage menu of warm to cool options as well as a brightness slider.



19. Select the “**Model**” tab to reveal twenty nine preset modes that range from static, gradient and flashing patterns, as well as a speed and brightness controller.
20. Select the “**Custom**” tab to reveal sixteen spots for custom colors to be added by the user that will also be able to be controlled by jump, gradient and flash mode. Speed can also be controlled here.



21. At the bottom of the screen (regardless of which tab is selected) a quick menu will be seen, which contains the **RGB**, **MUSIC** and **TIMER** mode.
22. Music mode will allow RGB's to flash according to the music played from library storage on the phone.
23. Timer mode has a timer on and timer off function.



1-800-221-0932

www.HeiseLED.com

460 Walker Street, Holly Hill, FL 32117