

Scan to save a copy



## Active Imaging™ 3-in-1 Nose Cone Transducer Installation Guide

**⚠ WARNING:** This product must be installed in accordance with the instructions provided. Failure to do so could result in personal injury, damage to your vessel and/or poor product performance.

**⚠ WARNING:** Performing service or maintenance without first disconnecting the battery can cause product damage, personal injury, or death due to fire, explosion, electrical shock, or unexpected motor starting. Always disconnect the battery cables from the battery before maintaining, servicing, installing, or removing motor components.

### In the box

- Active Imaging™ 3-in-1 nose cone transducer
- 1x nose cone bolt O-ring
- 1x nose cone O-ring
- 2x lower unit O-ring
- 1x nose cone cap

### Tools needed

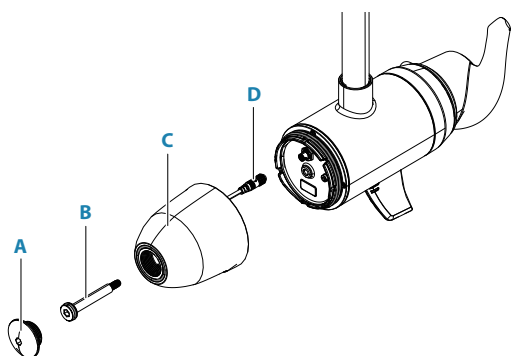
- 8 mm hex key

### Installation

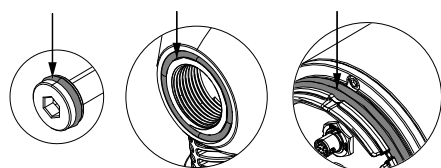
If a nose cone or nose cone transducer is already installed on your trolling motor, remove it:

- 1 Disconnect the trolling motor power cable from the battery (or unplug the power cable if using a plug and receptacle).
- 2 Unscrew the nose cone cap (A), then the nose cone bolt (B).
- 3 Gently detach the nose cone (C) from the lower unit.
- 4 Rotate the connector nut on the sonar cable anti-clockwise to unlock and detach the cable (D).

→ **Note:** Make sure you don't loosen the plastic nut behind the 9-pin connector on the lower unit.



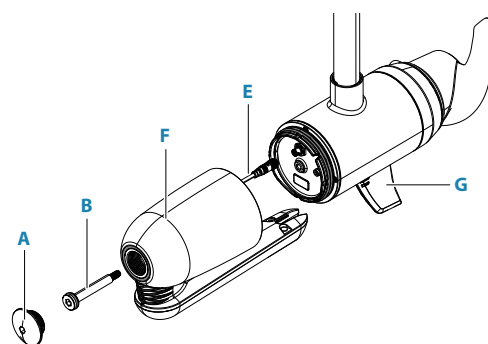
- 5 Check the O-rings on the nose cone bolt, Active Imaging™ 3-in-1 nose cone and trolling motor lower unit to make sure they are in usable condition and properly installed. If they show damage (cracks, rough edges, voids or discoloration), discard and replace with the supplied O-rings.



**⚠ WARNING:** Do not operate the trolling motor without a nose cone transducer (or blank nose cone) installed on the lower unit.

To attach the Active Imaging™ 3-in-1 nose cone transducer to your Ghost® Series trolling motor:

- 6 Align the arrow on the sonar cable connector (E) with the mark on the socket. Connect the sonar cable and rotate the connector nut until locked (a quarter turn).
- 7 Attach the nose cone (F) to the lower unit, underside aligned with the skeg (G).
- 8 Insert the nose cone bolt (B) and tighten to torque 7.5 Nm (5.5 lb-ft).
- 9 Screw on the nose cone cap (A) and tighten to torque 3.5 Nm (2.5 lb-ft). A new nose cone cap is supplied if your existing cap is damaged.



Environmental	
<b>Operating temperature</b>	-15°C to 55° C (+5°F to 131°F)
<b>Storage temperature</b>	-30°C to 70°C (-22°F to 158°F)
Sonar	
<b>Output</b>	Traditional, SideScan imaging, DownScan imaging, Temperature
<b>Frequency</b>	
Traditional	200 kHz High Chirp 83 kHz Medium Chirp
DownScan / SideScan	455 kHz / 800 kHz
<b>Maximum depth*</b>	
Traditional	305 m (1000 ft) at 200 kHz / High CHIRP and 83 kHz / Medium CHIRP
DownScan	91 m (300 ft)
SideScan	91 m (300 ft) at 455 kHz 46 m (150 ft) side range at 800 kHz

\* The maximum depth can vary depending on the output power of the equipment the transducer is connected to.