

## AcquaLink Battery Gauges

### Description

The AcquaLink® ammeter and voltage gauges provide an overview of the entire electrical system. The gauges receive the information from an Easylink Master which is connected to the VDO Bus. Gauges can easily be daisy-chained to any other Easylink gauge using the attached harness.

### Battery Charge



A2C59501942



A2C59501943



A2C1338540001



A2C1338550001

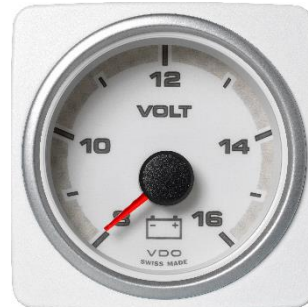
### Battery Voltage



A2C59501940



A2C59501941



A2C1338740001



A2C1338750001

## Available Gauges:

Gauge PN	Gauge Type	Colour	Measurement range	Diameter (mm)
A2C59501942	Battery Charge	Black / Silver with white numbering	- 60 / + 60 A	52
A2C1338540001	Battery Charge	White / Silver with black numbering	- 60 / + 60 A	52
A2C59501943	Battery Charge	Black / Silver with white numbering	- 150 / + 150 A	52
A2C1338550001	Battery Charge	White / Silver with black numbering	- 150 / + 150 A	52
A2C59501940	Battery Voltage	Black / Silver with white numbering	8 – 16 V	52
A2C1338740001	Battery Voltage	White / Silver with black numbering	8 – 16 V	52
A2C59501941	Battery Voltage	Black / Silver with white numbering	16 – 32 V	52
A2C1338750001	Battery Voltage	White / Silver with black numbering	16 – 32 V	52

## Features

- AMP Superseal Easylink connector
- < 100 mA
- 240° pointer deflection angle
- Reverse polarity protection
- Anti-fog mineral glass lens
- 52 mm Installation Diameter
- 50 mm installation depth
- Operating temperature range -20 °C / +70 °C
- Storage temperature range -30 °C / +80 °C

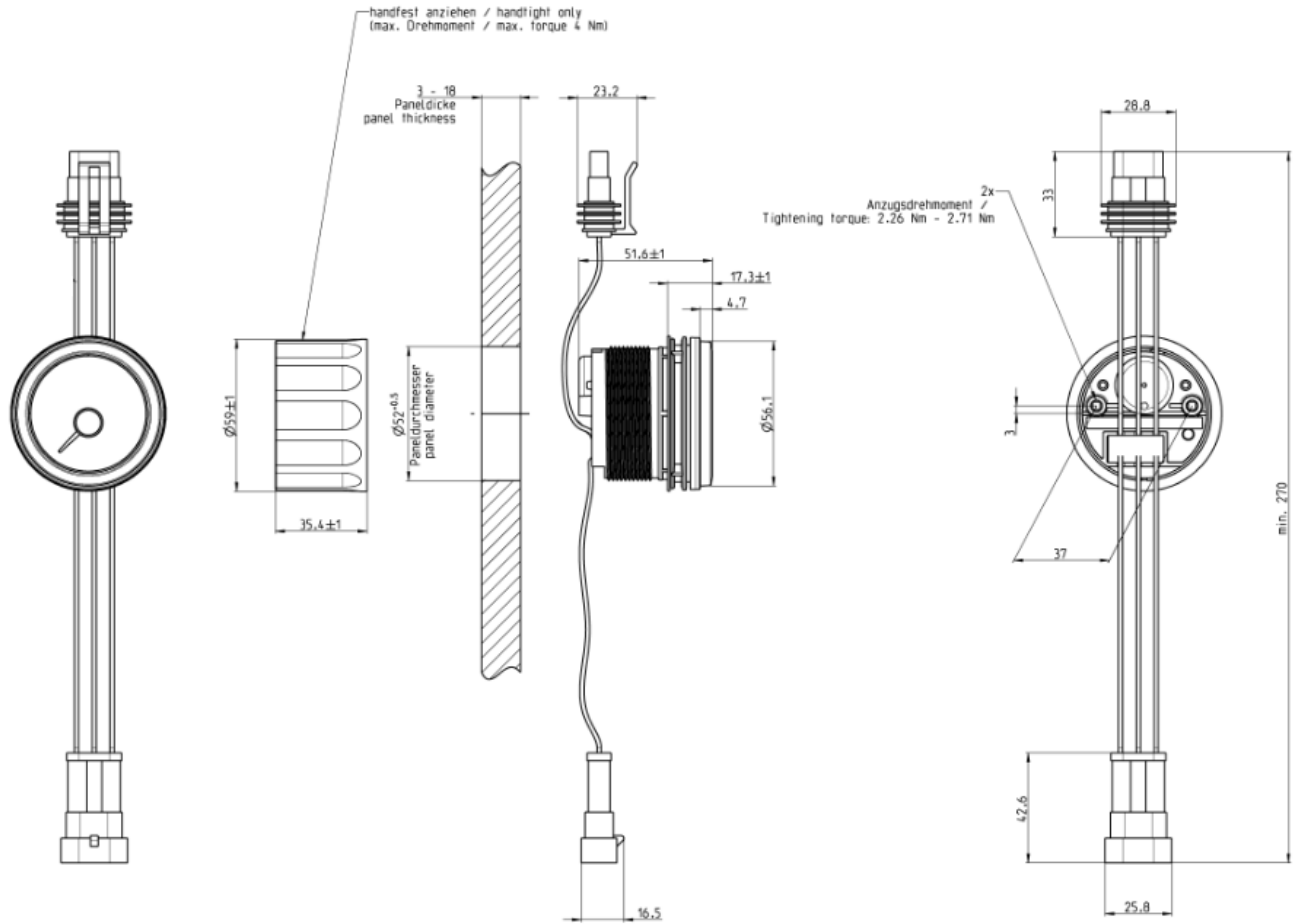
Technical Data	
<b>Housing</b>	Material: PBT- FR Bezel: Black, White in Single or Double version
<b>Dimensions</b>	Installation Depth: 50mm (w/o connector) Installation Diameter: 52mm
<b>Display</b>	Viewing Area: 180° (+/-1° tolerance)
<b>Operating Voltage</b>	8.5-30 VDC
<b>Current Consumption</b>	100mA
<b>Operating Temperature</b>	-20°C to +70°C
<b>Storage Temperature</b>	-30°C to +80°C
<b>Nominal Position</b>	NL 0 to NL 85; According to DIN 16257
<b>Mounting/Fixing</b>	Top or flush mount
<b>Protection Class</b>	IEC60945 exposed equipment Front: IPX6 extended Rear: IPX4
<b>Flammability</b>	UL-94
<b>EMC</b>	IEC 60945:2002
<b>Reverse Polarity Protection</b>	Yes, 1 minute
<b>Short Circuit Protection</b>	Yes, 1 minute
<b>Approval</b>	CE

## Connectors

AMP Superseal 3 Pol

Pin	Signal
1	Easylink – Power
2	Easylink – Data
3	Easylink – GND

Mechanical Design



Accessories

Part Number	Item specifics
A2C59501965	Black bezel 52 single
A2C59501966	Black bezel 52 double
A2C52059471	Spinlock nut 52 mm
A2C1650700001	Silicone instrument cover 52 mm single
A2C59501971	Silicone instrument cover 52 mm double
A2C1650700001	Easylink extension Cable