



What This Lifetime Warranty Covers. This Limited Lifetime Warranty covers defects in materials and workmanship for the practical lifetime of *HydroPlane* brand manufactured by Nauticus Inc or its affiliates. Only original, unaltered, and unmodified materials and workmanship are covered by this policy. This lifetime warranty does not cover damage caused by normal wear and tear, improper care, misuse, accident, neglect, or the natural breakdown of materials over time. Products should be returned to us for evaluation. Items with defects in materials and workmanship will be replaced. This policy is applicable to United States customers only and limited to the original factory (msrp) purchase price.

How Long This Warranty Lasts. This Limited Lifetime Warranty lasts for the expected lifetime of the product from date of purchase. For more information please visit our FAQ. Coverage ends if you sell or transfer the product.

Shipping Information. Nauticus will cover the cost of return shipping. Nauticus will ship your product with a reputable carrier that can provide tracking information and proof of delivery, such as FedEx or UPS. Nauticus cannot be held responsible for packages lost in transit.

How Local Law Applies. This Limited Lifetime Warranty gives you specific legal rights, and you may also have other rights which vary from jurisdiction to jurisdiction.

Limitation of Liability. Nauticus shall be under no obligation to furnish service under this Warranty. In no event shall Nauticus (including its subsidiaries, affiliates, officers, directors, employees, or agents) be liable for any special, consequential, incidental or exemplary damages arising out of or in any way connected with the equipment or otherwise, including but not limited to damages for lost profits, cost of substitute or replacement equipment or parts, down time, injury to property or any damages or sums paid by Purchaser to third parties, even if Nauticus has been advised of the possibility of such damages. The foregoing limitation of liability shall apply whether any claim is based upon principles of contract, tort, statutory duty, indemnity, contribution, or otherwise. In no event shall Nauticus be liable to Purchaser or any other party for loss, damage, or injury of any kind or nature arising out of or in connection with this Warranty in excess of the purchase price of the equipment actually delivered to and paid for by the Purchaser.



Installation & Owner Manual Designed for boats 8' - 16' in length with up to 40 HP

The *HydroPlane* system features dynamic hinge technology that reacts to water pressure and boat speed to produce a smoother ride and better handling. Thermo-molded composite construction provides superior strength and resilience in any water conditions. The autonomous trim plates become an extension of the boat's running surface and require no external activation. For overall stability, faster time to plane, and elimination of common problems like porpoising and chine walking, *HydroPlane* provides the port-to-starboard balance that hydrofoils cannot.

“ We Make The Best Boats Better”



Follow us on:



© 2022

8080 Snowville Rd. - Brecksville - Ohio - 44141
PH: 440-746-1290 .Toll Free: 800-233-0194 . email: info@nauticusinc.com

Web Site: www.nauticusinc.com



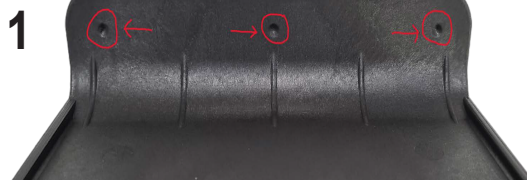
8080 Snowville Rd
Brecksville, OH 44141

Phone
440-746-1290
800-233-0194

Web
info@nauticusinc.com
www.nauticusinc.com

Assembly and Installation Instructions

Step By Step Guide



1 Locate the 3 location markers on the hinge.



2 Using a 7/32 drill bit, drill out the location markers. **NOTE:** Run the drill bit in and out 2-3 times to smooth out the hole.



3 Find the proper location for the *HydroPlane*. Measure 3-5" in from the outside edge of the boat or position just inside the first chine.



4 Mark the holes using the plate as a template. You will mount the tab 1/2" up from the bottom of the boat. Note you want the bottom side of the dynamic hinge to be at the 1/2" mark.



5 Using a 7/32" drill bit for fiberglass and a 3/16" drill bit for aluminum and wood transoms, drill out the marked holes. Put a piece of tape 3/4" up on drill bit to get the correct depth.



6 Use any marine grade silicone, adhesive or sealant and fill in the holes. Apply just enough to fill the holes. There is no need to apply any to the back of the product.



7 Using the 1/4 x 1 sheet metal screw, Slide the screw through the black washer and then install the plate using a Phillips head screw driver. **DO NOT** use a drill gun as you risk breaking the screw head. **IMPORTANT NOTE:** Make sure you tighten down the screws all the way, as tight as you can get them **by hand**.



8 Finished Install

