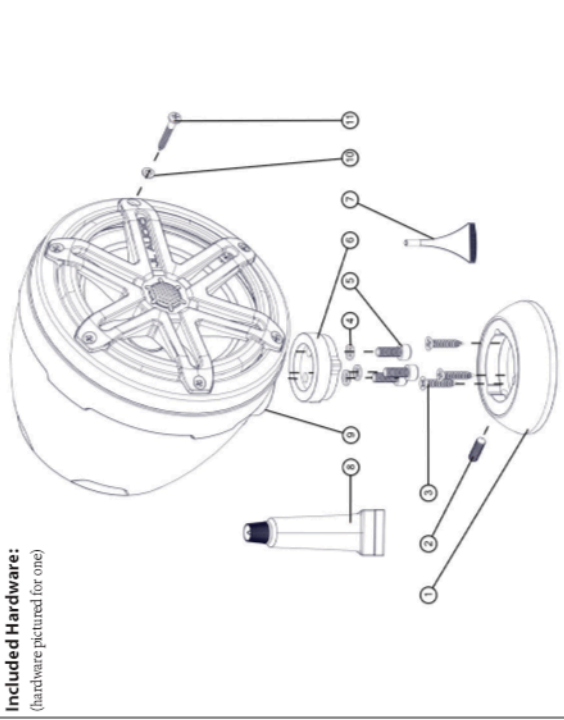


**Included Hardware:**  
(hardware pictured for one)



**NOTE:** The PS-SWMCP-B-SM Fixture and PS650-VeX-SG-TMB Enclosed Speaker System are used in this manual for illustrative purposes only. The fixture installation steps are the same for all PS650-VeX Enclosed Speaker Systems and all PS-SWMCP swivel fixtures for flat surfaces.

BOM ID	Quantity	Description
1	2	Mounting Receiver
2	2	M6 x 20 mm Set Screw
3	6	#10 x 1" Flat Head Phillips Sheet Metal Screw
4	6	M6 Split Lock Washer
5	6	M6 x 16 mm Socket Cap Machine Screw
6	2	Mounting Base
7	1	Loctite® Red Thread-Locking Compound
8*	1	Silicone Adhesive
9*	2	Fixture Base
10*	1.2	#8 Flat Washer
11*	1.2	#8 x 1-1/4" Pan Head Screw

\* Included with VeX™ speaker enclosures.

**For Standard Models:**

Wire Size	Wire Label	Use
16 AWG	"+"	Speaker Positive (+)
	N/A	Speaker Negative (-)

**For Premium Models:**

Wire Size	Wire Color	Use
16 AWG	Red/Stripe	Speaker Positive (+)
	Black/Stripe	Speaker Negative (-)
20 AWG	Red	Not Used
	Green	Not Used
	Blue	LED Positive (+)
	Yellow	LED Negative (-)

Note: Not all wires may be used in normal applications.

**LIMITED WARRANTY - MARINE PRODUCTS (USA)**

JL AUDIO warrants this product to be free of defects in materials and workmanship for a period of two (2) years from the original date of purchase.

This warranty is not transferable and applies only to the original purchaser from an authorized JL AUDIO dealer. Should service be necessary under this warranty for any reason due to manufacturing defect or malfunction, JL AUDIO will (at its discretion), repair or replace the defective product with new or remanufactured product at no charge. Damage caused by the following is not covered under warranty: accident, misuse, abuse, product modification or neglect, failure to follow installation instructions, unauthorized repair attempts, misrepresentations by the seller. This warranty does not cover incidental or consequential damages and does not cover the cost of removing or reinstalling the unit(s). Cosmetic damage due to accident or normal wear and tear is not covered under warranty.

Any applicable implied warranties are limited in duration to the period of the express warranty as provided herein beginning with the date of the original purchase at retail, and no warranties, whether express or implied, shall apply to this product thereafter. Some states do not allow limitations on implied warranties, therefore these exclusions may not apply to you. This warranty gives you specific legal rights, and you may also have other rights which vary from state to state.

**For Service Information in the U.S.A. please call**  
**JL Audio Customer Service: (954) 443-1100**  
 9:00 AM – 5:30 PM (Eastern Time Zone)

**JL Audio, Inc**  
 10369 North Commerce Pkwy.  
 Miramar, FL 33025, USA

**International Warranties:**  
 Products purchased outside the United States of America are covered only by that country's distributor and not by JL Audio, Inc.

**JL AUDIO® | How we play.™**  
[www.jlaudio.com](http://www.jlaudio.com)

JL Audio® and the JL Audio logo are registered trademarks of JL Audio, Inc. "How we play.™" and its respective logo is a trademark of JL Audio, Inc.

©2016 JL Audio, Inc. • For more detailed information please visit us online at [www.jlaudio.com](http://www.jlaudio.com). Due to our policy of continuous product development, all specifications are subject to change without notice.



**SKU# 011499**  
 Printed in U.S.A. • 092817



Installation Instructions for all  
**PS-SWMCP**  
 swivel fixtures for flat surfaces

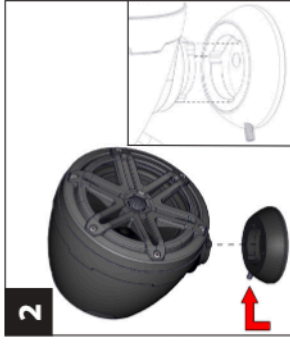


**SURFACE MOUNTING FIXTURES (SWIVEL)**  
**FOR PS650-VeX™ ENCLOSED SPEAKER SYSTEMS**

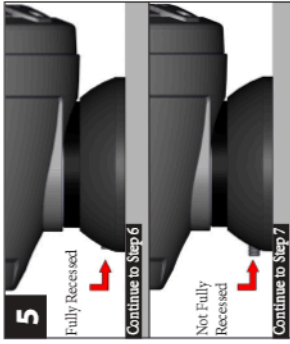




Hand-tighten one M6 x 16 mm Socket Cap Machine Screw and Split Lock Washer to temporarily secure the Mounting Base to the Fixture Base of the enclosure, as illustrated.



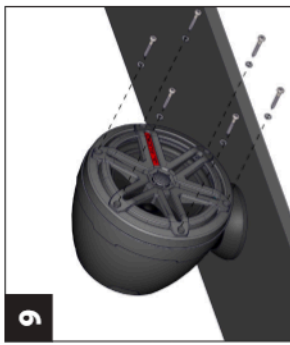
Partially thread the M6 x 20 mm Set Screw into the Mounting Receiver. Align the keys of the Mounting Base with the keyways in the Mounting Receiver, then insert fully.



Place the enclosure at its desired location with the speaker and Set Screw aimed in the desired direction. Use a pencil to draw an outline of the Mounting Receiver's base and location of the Set Screw on the mounting surface. Next, while holding the Mounting Receiver with one hand, rotate and pull the enclosure away to separate it.



Mark the three mounting hole locations with a pencil, and drill pilot holes on the marks with an appropriate drill bit. Install the Mounting Receiver with three #10 x 1" Flat Head Phillips Sheet Metal Screws. Insert the Mounting Base into the Mounting Receiver, rotate the enclosure to the desired position, and tighten the Set Screw.



Remove the fasteners from Step 1, and rotate the Mounting Base to align with either the next or previous mounting hole in the Fixture Base. Slide a Split Lock Washer over each of three: M6 x 16 mm Socket Cap Machine Screws, apply Loctite® Red Thread Locking Compound to the Mounting Receiver, and install the JL Audio logo badge.



Align the keys of the Mounting Base with the keyways in the Mounting Receiver, then insert fully. Aim the speaker in the desired direction, and tighten the Set Screw in the Mounting Receiver. Remove adhesive backing and install the JL Audio logo badge.



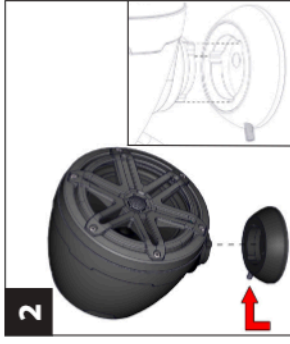
Remove the fasteners from the rear logo appliqué. With the logo positioned at the desired angle, attach the appliqué to the back of the enclosure.



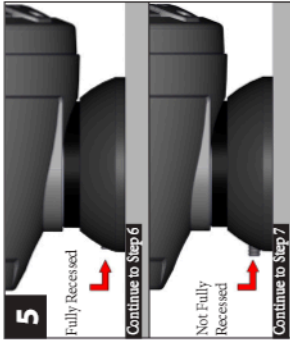
Remove the keys of the Mounting Base with the keyways in the Mounting Receiver, then insert fully. Aim the speaker in the desired direction, and tighten the Set Screw in the Mounting Receiver. Remove adhesive backing and install the JL Audio logo badge.



Rotate the speaker to the desired angle. Reinsert the speaker and speaker mounting screws and washers. Hand-tighten in a criss-cross pattern.



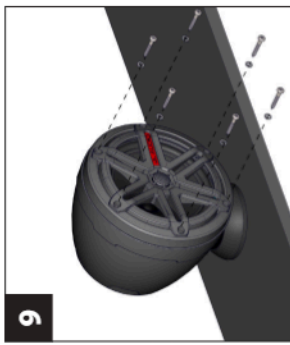
Gently press on the appliqué from the center out to remove any air pockets.



Remove the backing from the rear logo appliqué. With the logo positioned at the desired angle, attach the appliqué to the back of the enclosure.



Clean the inside of the aluminum cap with acetone (not included) prior to attaching it to the enclosure. Apply a circular bead of silicone adhesive to the inside of the aluminum logo cap, 1/2-inch (13 mm) from the outer edge.



Align the aluminum logo cap to the desired angle of rotation, and press it onto the back of the enclosure. Apply masking tape (not included) to hold the cap in place until the silicone cures (at least 24 hours).



Steps 13-14 are for Premium Models Only



Steps 11-12 are for Standard Models Only



- For marine installations, do not connect the speaker's LED lights to the vessel's navigational lighting circuits.
- For short-circuit protection, install a supplied fuseholder onto EACH speaker's BLUE (+12V) LED power connection lead.
- Connect all BLUE (+12V) leads together (parallel) and connect to a switched +12V supply. Connect all YELLOW (GND) leads together and connect to a negative ground or to the NEGATIVE battery post.
- We recommend activating the speakers' LEDs thru a lighting circuit that supplies +12V via an existing switch. If an existing switched circuit is not available, you may install a dedicated toggle/rocker style switch that will supply positive (+12V) power. Fuse this connection according to how many LED circuits you have (LED circuits x 150 mA).