



## AC PLUG PORT INSTRUCTIONS

CH-PLUG-12-AC\_EA • CH-PLUG-6-AC\_EA • CH-PLUG-RECEPT\_EA

### Installation Tools:

- 1/8" Drill Bit
- 2" Hole Saw
- Electric Drill

### Included Hardware:

- (1) AC Plug Port Assembly
- (4) Mounting Screws
- (1) Drill Template
- (2) Assembly Bolts

#### **IMPORTANT!**

- Only compatible with Power-Pole extension cords or the AC cord from the CHARGE.
- Always use cover when not in use.



## Drilling Instructions

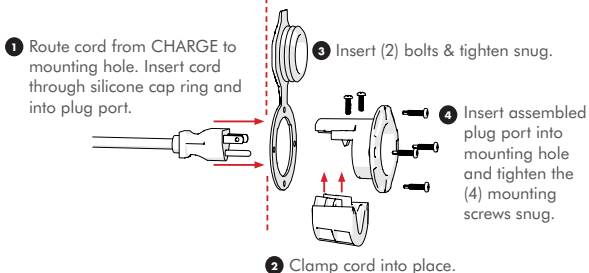
**STEP 1:** Mounting location: at least 21" away from all batteries, fuel lines, & integral support structures.

**STEP 2:** Align template with mounting location & drill a pilot hole for the hole saw using a 1/8" drill bit. If installing into a gel-coat, use the template to drill four pilot holes for mounting screws.

**STEP 3:** Drill mounting hole with a 2" hole saw.

### Installation Instructions

Mounting Surface



9010 Palm River Road, Tampa, Florida 33619 • phone 813.689.9932  
fax 813.689.8883 • power-pole.com | Power-Pole is a registered trademark of  
JL Marine Systems, Inc. © Copyright 2021 JL Marine Systems, Inc. All Rights Reserved.

21878931