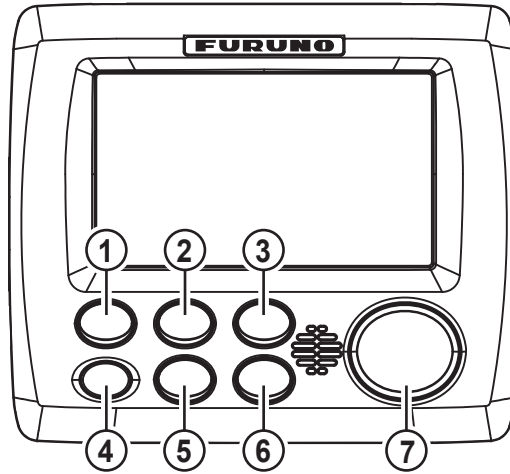


English

Description of controls

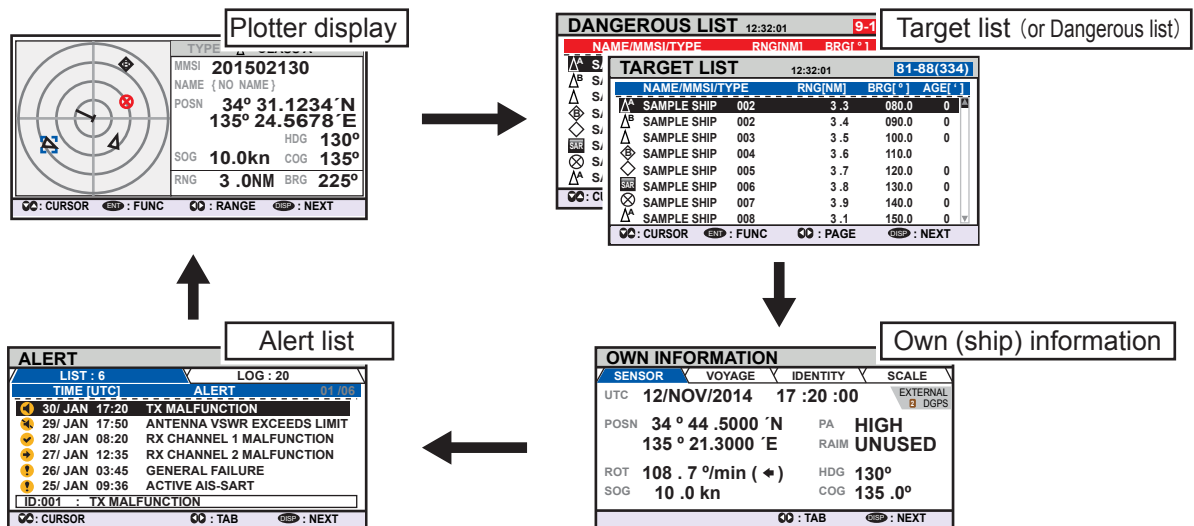


No.	Key name	Description
1	BRILL	<ul style="list-style-type: none"> Displays brilliance setting pop-up window. Switches between Day and Night modes.
2	DISP	<ul style="list-style-type: none"> Cycles through display screens. Switches between Day and Night display modes when brilliance pop-up window is open. Closes all active menu windows and returns to the last displayed screen.
3	MENU/ESC	<ul style="list-style-type: none"> Opens the menu. Goes back one layer in the menu. Closes the settings screen, when displayed, and returns to the menu.
4	Power key	<ul style="list-style-type: none"> Short press to turn the unit on. Long press to turn the unit off.

No.	Key name	Description
5	NAV STATUS	<ul style="list-style-type: none"> Opens the [NAV STATUS] settings window.
6	ENT/ACK	<ul style="list-style-type: none"> Selects the currently highlighted item on the menu. Confirms adjusted settings. Acknowledges alerts.
7	Cursorpad	<ul style="list-style-type: none"> Move the selection cursor. Plotter display: ◀ or ▶ changes the display range. [TARGET LIST] display: ◀ or ▶ changes the displayed page. ▲ or ▼ selects a target. [OWN INFORMATION] display: ◀ or ▶ changes the displayed tab. [ALERT display]: ◀ or ▶ changes the displayed tab. ▲ or ▼ selects an alert.

Display screens

Press the **DISP** key to cycle through display screens.



Plotter display

MMSI: 201502130
 NAME (NO NAME)
 POSN: 34° 31.1234' N, 135° 24.5678' E
 HDG: 130°
 SOG: 10.0kn COG: 135°
 RNG: 3.0NM BRG: 225°

⏪: CURSOR ⏩: FUNC ⏪: RANGE ⏩: NEXT

DANGEROUS LIST 12:32:01 9-1

NAME/MMSI/TYPE RGN(NM) BRG(°)

TARGET LIST 12:32:01 81-88(334)

NAME/MMSI/TYPE	RGN(NM)	BRG(°)	AGE(°)
▲ SAMPLE SHIP 002	3.3	080.0	0
▲ SAMPLE SHIP 003	3.5	100.0	0
▲ SAMPLE SHIP 004	3.6	110.0	0
▲ SAMPLE SHIP 005	3.7	120.0	0
▲ SAMPLE SHIP 006	3.8	130.0	0
▲ SAMPLE SHIP 007	3.9	140.0	0
▲ SAMPLE SHIP 008	3.1	150.0	0

⏪: CURSOR ⏩: FUNC ⏪: PAGE ⏩: NEXT

OWN INFORMATION

SENSOR VOYAGE IDENTITY SCALE

UTC 12/NOV/2014 17:20:00 EXTERNAL DGPS

POSN 34° 44.5000' N PA HIGH
 135° 21.3000' E RAIN UNUSED

ROT 108.7°/min (↻) HDG 130°
 SOG 10.0 kn COG 135.0°

⏪: TAB ⏩: NEXT

Alert list

LIST: 6 LOG: 20

TIME [UTC]	ALERT
30/ JAN 17:20	TX MALFUNCTION
29/ JAN 17:50	ANTENNA VSWR EXCEEDS LIMIT
28/ JAN 08:20	RX CHANNEL 1 MALFUNCTION
27/ JAN 12:35	RX CHANNEL 2 MALFUNCTION
26/ JAN 03:45	GENERAL FAILURE
25/ JAN 09:36	ACTIVE AIS-SART

ID:001 : TX MALFUNCTION

⏪: CURSOR ⏩: TAB ⏩: NEXT

How to send and receive messages

How to send a message

This procedure applies to Class A AIS, for Inland AIS see section 2.6 of the operator's manual.

1. Press the **MENU/ESC** key to open the main menu.
2. Select [MSG]→[NEW MSG], then press the **ENT/ACK** key.



3. [MSG TYPE] is selected, press the **ENT/ACK** key.



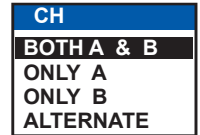
4. Select the appropriate message type, then press the **ENT/ACK** key. For broadcast messages, skip to step 6.

- [BROADCAST]: Message to all vessels.
- [ADDRESSED]: Message to specified vessel only.

5. Select [TO], then press the **ENT/ACK** key. Input the MMSI of the ship you wish to send this message to, then press the **ENT/ACK** key.
6. Select [CH] (Channel), then press the **ENT/ACK** key.

7. Select the appropriate option, then press the **ENT/ACK** key. For broadcast messages, skip to step 9.

- [BOTH A & B]: Sends the message over both channel A and channel B.
- [ONLY A]: Sends the message over channel A only.
- [ONLY B]: Sends the message over channel B only.
- [ALTERNATE]: Sends messages on alternating channels.



8. Select [RETRY], then press the **ENT/ACK** key. Set the retry attempts, then press the **ENT/ACK** key.
9. Press ▼ to highlight the message text, then press the **ENT/ACK** key.
10. Input the new message text, then select [<SEND MSG>] at the top right of the screen, then press the **ENT/ACK** key. A confirmation pop up appears.
11. Select [YES] to send the message, then press the **ENT/ACK** key.

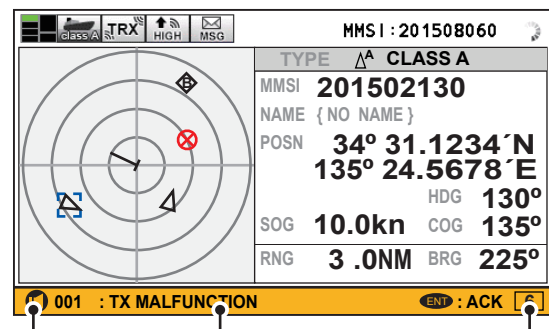
How to receive a message

When a message is received, the equipment beeps and a pop up message appears on the screen. The table below lists the possible messages with a brief description.

Pop up message	Description
[TEXT MESSAGE RECEIVED.]	Displayed when a broadcast message is received.
[TEXT MESSAGE RECEIVED.] MMSI NAME	Displayed when an addressed message is received. MMSI appears by default, however, where name data is available, the vessel name is also displayed.

How to acknowledge alerts

The buzzer sounds for equipment errors and is accompanied by a flashing indication at the bottom of the screen. Press the **ENT/ACK** key to silence the buzzer and acknowledge the alert. If there are multiple alerts, each alert must be acknowledged individually.



Alert icon Alert code/message Number of unacknowledged alerts

