

SAE POWER SOCKET - FRONT MOUNT

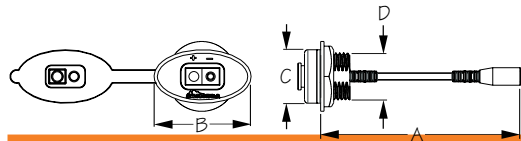
Injection Molded PVC



| Bulk | Display | A | B | C | D | Volts | Max Amps | Wire Gauge | Wt.(lb.) | Std. Pack |
|------|----------|----|--------|----|------|-------|-----------|------------|----------|-----------|
| n/a | 426950-1 | 5" | 1-1/4" | 1" | 3/4" | 12-24 | 20A @ 12V | 14 AWM | .12 | 10 ea |

SAE type Polarized Electrical Connector is a two-prong power socket connector set. Great for solar panel connections and maintaining battery charge. 14-gauge duplex wire. Drill 3/4" hole and install with two #10 RH screws (not included). Maximum: 20A @ 12VDC.

▲WARNING: Cancer and Reproductive Harm - www.P65Warnings.ca.gov



SAE POWER SOCKET - BACK NUT MOUNT

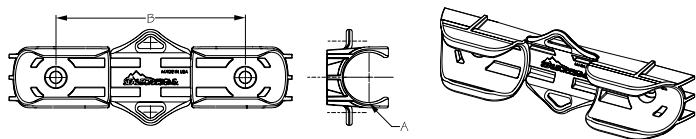
Injection Molded PVC



| Bulk | Display | A | B | C | D | Volts | Max Amps | Wire Gauge | Wt.(lb.) | Std. Pack |
|------|----------|----|----------|----|------|-------|-----------|------------|----------|-----------|
| n/a | 426955-1 | 5" | 1-13/16" | 1" | 7/8" | 12-24 | 20A @ 12V | 14 AWM | .13 | 10 ea |

SAE type Polarized Electrical Connector is a two-prong power socket connector set. Great for Solar panel connections and maintaining wire. Installation is as easy as drilling a 7/8" hole, inserting the socket body, tightening the locking nut and connecting the wires. Maximum: 20A @ 12VDC.

▲WARNING: Cancer and Reproductive Harm - www.P65Warnings.ca.gov



PERFORMANCE PADDLE CLIP KIT

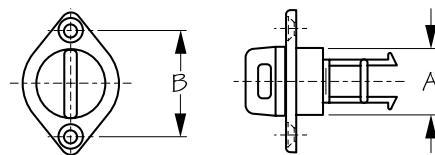
Injection Molded Nylon/Stainless Steel



| Bulk | Display | A | B | Fastener | Wt.(lb.) | Std. Pack |
|------|----------|--------|----|----------|----------|-----------|
| n/a | 491361-9 | 1-1/8" | 4" | 1/4" PH | .18 | 10 kits |

This one-piece Performance Paddle Clip allows for simple, one-handed storage of your paddle. Features an anti-sag ramp to prevent line from getting stuck under the clip when not in use, and leash attachment points for securing a paddle leash. Kit includes: Paddle clip (1), 10-32 X 1" PH machine screws (2), 10-32 Nyloc nuts (2), #10 flat washers (2), and #10 well nuts (2). Proudly constructed in the USA of UV resistant injection molded nylon with stainless steel hardware.

▲WARNING: Cancer and Reproductive Harm - www.P65Warnings.ca.gov



DRAIN PLUG KIT

Injection Molded Nylon



| Bulk | Display | A | B | Fasteners Included | Wt.(lb.) | Std. Pack |
|------|----------|----|--------|--------------------|----------|-----------|
| n/a | 520010-9 | 1" | 1-1/2" | Yes | .08 | 10 kits |

This Drain Plug was designed with a molded-in recess in the base to trap sealant to provide a watertight seal. For transom installations, baitwells, ice chests, tanks, etc. Kit includes: Drain plug and base (1), foam gasket (1), 10-32 X 1" OH machine screws (2), 10-32 Nyloc nuts (2), #10 flat washers (2), and #10 well nuts (2). Proudly constructed in the USA of UV resistant injection molded nylon with stainless steel hardware.

▲WARNING: Cancer and Reproductive Harm - www.P65Warnings.ca.gov



PADDLE & POLE KEEPER KIT

Injection Molded Nylon/Polypropylene



| Bulk | Display | Description | Fasteners Included | Wt.(lb.) | Std. Pack |
|------|----------|--------------------------|--------------------|----------|-----------|
| n/a | 671400-9 | Paddle & Pole Keeper Kit | Yes | .34 | 5 kits |

This Paddle & Pole Keeper Kit lets you easily store your pole or paddle and frees up your hands for other activities! Kit includes: 18" of 1/4" bungee (2), bungee terminal ends w/ sleeve (4), lashing hooks w/ one hole (2), 10-32 X 3/4" PH machine screws (6), 10-32 Nyloc nuts (6), #10 flat washers (6), trifold pop rivets (6), and easy installation instructions. Proudly constructed in the USA of injection molded nylon and polypropylene with stainless steel hardware.

▲WARNING: Cancer and Reproductive Harm - www.P65Warnings.ca.gov