

A close-up, black and white photograph of a speedometer. The needle is positioned between 90 and 120, pointing towards 100. The numbers 60, 90, and 120 are clearly visible on the dial. The background is dark and out of focus.

veratron 

 30<sup>TH</sup>  
**DAME**  
NOMINATED  
2021

# VMH 35 FOR SUZUKI ENGINES

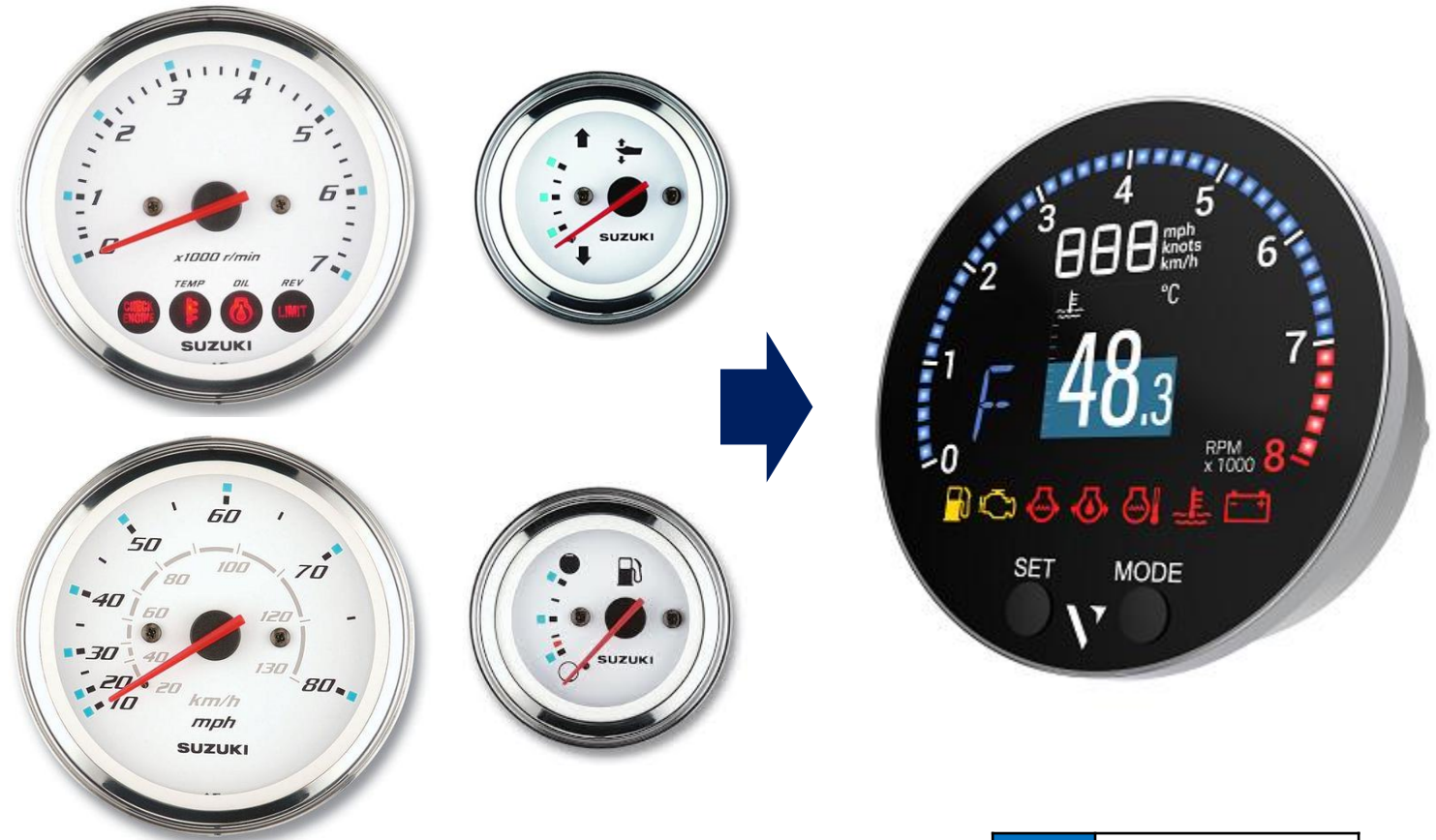
Product introduction

# VMH 35 SUZUKI KIT

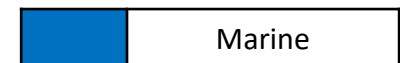
## Analog Engine Connection:

VMH 35-S PWM

- ▼ VMH 35 device for Suzuki engines
- ▼ PWM input for Trim sensor
- ▼ Resistive input for Fuel Level
- ▼ Dedicated input for analog alarms
- ▼ Drop-in replacement for Suzuki analog gauges
- ▼ Sumitomo connectors
- ▼ Embedded GPS



## Digital engine via NMEA Gateway



# SUZUKI ANALOG DISPLAYED DATA

- ▼ Tachometer 8000 RPM
- ▼ Boat speed or Speed Over Ground (SOG)
- ▼ Course Over Ground (COG)
- ▼ GPS position
- ▼ Fuel Level
- ▼ Voltmeter
- ▼ Trim
- ▼ Hour counter: total and trip
- ▼ Clock (UTC)
- ▼ Alarms: Check Engine, Coolant Temp, Oil Pressure
- ▼ Alarms, configured in display: Low Fuel, Low & High Voltage

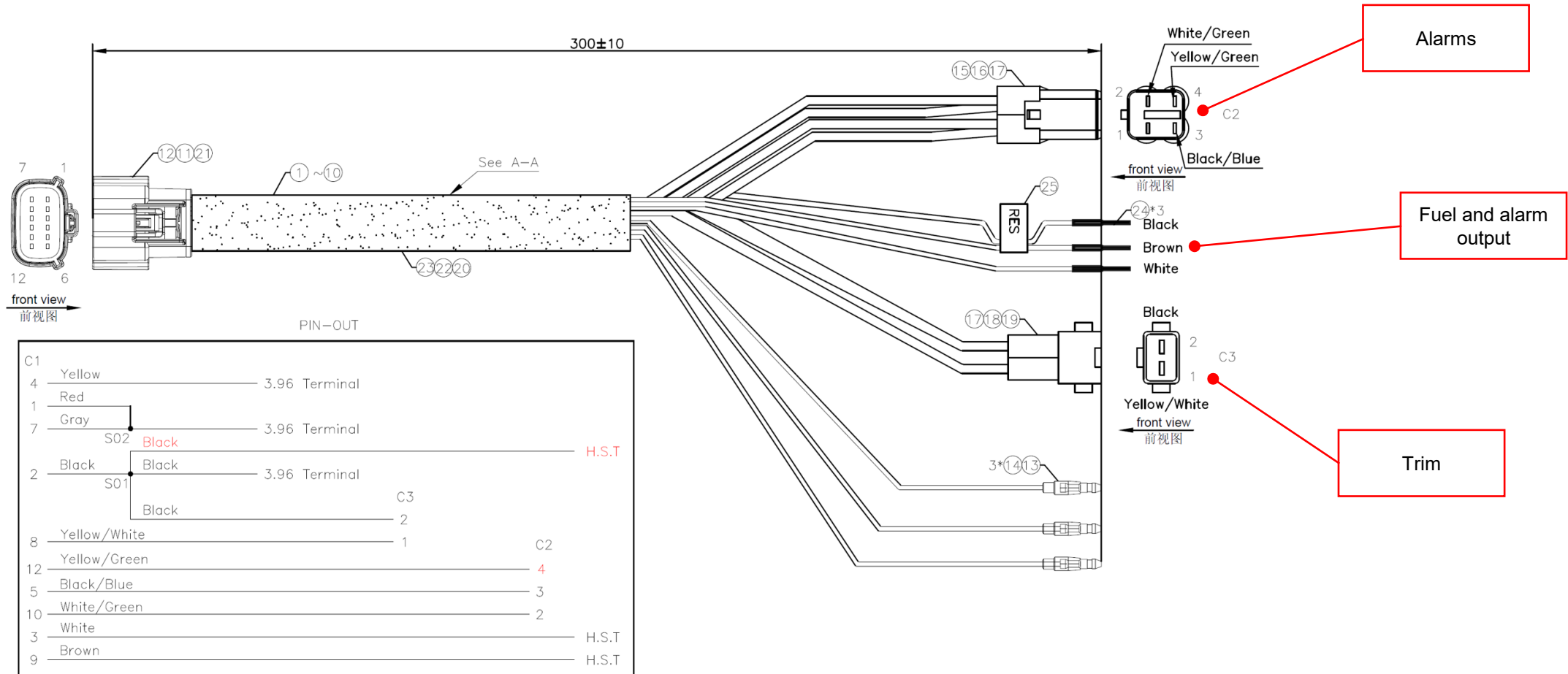


## VMH35-S PWM / B00204101

- ▼ DF40A-60A series
- ▼ DF70A-100B series
- ▼ DF100C-140B series
- ▼ DF150A-200A series
- ▼ DF250AP-300AP series
- ▼ DF300B-350A series
- ▼ Dedicated harness included with plug-and-play Sumitomo connectors
- ▼ Frequency input for **Tachometer**
- ▼ PWM input for **Trim** sensor
- ▼ Resistive input for **Fuel** Level
- ▼ Dedicated input for analog **alarms** (Check Engine, Oil Pressure, Water Temp)
- ▼ NMEA2000 Gateway



# SUZUKI / WIRING HARNESS





**OUTDOOR INSTRUMENTATION  
ENGINEERED IN SWITZERLAND**

[veratron.com](http://veratron.com)