

## HELICOPTER TRANSPORT SUIT MUSTANG MODEL MS2175 TC



The **Mustang MS2175 TC Helicopter Transport Suit** was developed in response to a unique requirement for a durable, dual-purpose solution ideally suited for use by helicopter transport crew and passengers. While the suit is based on the original floater suit concept, used by industrial clients on or over water, this specialized version of the suit has been modified extensively for use in the Helicopter Transportation environment. Careful attention has been paid to features which would assist the wearer in a safe egress from a ditched helicopter and provide increased visibility of the wearer in a Search and Rescue situation. Other design features ensure that the suit is comfortable to wear for a passenger and easy to work in for a crewmember.

The key elements of the suit include its reduced buoyancy, calculated average of 12.75 - 21.45 lbs (56.7 - 95.4 Newtons) size dependant, and its rugged reinforced knee and seat patches for increased abrasion resistance. This special design falls well below the maximum 35 lbs. buoyancy recommended for safe egress in the unlikely event of an emergency helicopter ditching, yet maintains a level of adequate insulation and additional anti-exposure protection that affords the wearer increased in-water survival time.

The reduced buoyancy is accomplished by minimizing the amount of foam inside the suit. The reduced buoyancy and the Mustang Survival Must Move™ Mobility system, gives the wearer more flexibility in movement while working inside the aircraft, and reduces the likelihood of heat stress that may be an issue with a heavier suit. It is advisable to enhance buoyancy by adding a manually inflatable helicopter life preserver, such as the Mustang model MD1127 FAA Approved LP.

While this suit addresses the requirements of the crew and passengers specifically, we have borrowed from the MAC series (Mustang Aviation Coveralls) worn by pilots and added the hood and mitts to this system as standard accessories.

The MS2175 TC's closed cell red neoprene hood (P/N MA7148) provides wetsuit style head and neck insulation during in-water situations. An integrated orange nylon hood folds out easily from the collar for inclement weather. The inflatable survival mitts (P/N MA7149) offer protection from the elements as well as increased visibility with their molten orange colour. SOLAS/IMO approved high visibility reflective tape is affixed to both the shoulders and the neoprene hood. As a precaution, the suit is embroidered with "Helicopter Transport Suit" to clearly differentiate its intended use from that of other higher buoyancy suits it may resemble in design.



# HELICOPTER TRANSPORT SUIT MUSTANG MODEL MS2175 TC

## Pockets

The MS2175 TC has ample storage space, for tools or personal belongings, in the cargo pockets located on the hip area of the suit. Large chest pockets and additional fleece lined hand warmer pockets complete the suit. The closed cell red neoprene hood stores in a lower calf pocket and the inflatable survival mitts fit into a second lower calf pocket.

## Flotation

The MS2175 TC provides inherent buoyancy that is well under the maximum limit recommended for ditched helicopter egress, 35 lbs (156 Newtons).

## Fabric

Shell construction uses coated high tenacity nylon material that retains strength after UV radiation exposure.

## AirSoft™ Foam Thermal Comfort

Engineered to enhance flotation and hypothermia protection, this system consists of ultra-soft closed cell foam that provides the ultimate in everyday wearability.

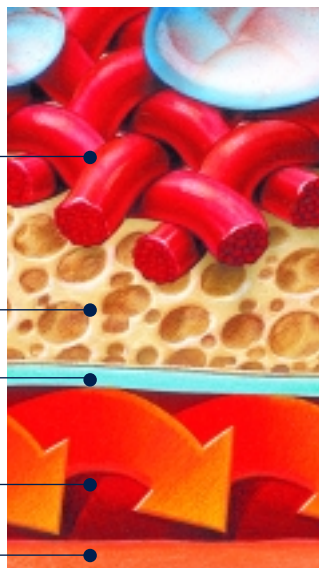
tight-weave high tenacity nylon outer-shell is abrasion and UV resistant

closed cell foam traps air pockets providing both buoyancy and insulation

lining material

body heat stays in

skin



## Size

The MS2175 TC is available in seven sizes (XS, S, M, L, XL, XXL, XXXL) to fit a wide range of users. The cut of the garment is designed for individuals of various body shapes.

SIZE	HEIGHT		CHEST		WEIGHT	
	inches	cm	inches	cm	lbs	kg
XS	64-66	162-167	30-34	76-86	99-154	45-70
S	66-68	167-172	34-38	86-96	99-154	45-70
M	68-70	172-177	38-42	96-107	132-198	60-90
L	70-72	177-182	42-46	107-117	176-242	80-110
XL	72-74	182-187	46-50	117-127	198-276	90-125
XXL	74-76	187-193	50-54	127-137	242-309	110-140
XXXL	76	193	54-58	137-147	275-352	125-160

## Color

Orange is used for high visibility.

*Mustang Survival has a policy of continuous improvement and reserves the right to modify products or features at anytime.*

### Mustang Survival USA

3870 Mustang Way  
Bellingham, WA., USA 98226  
Tel: 360-676-1782  
Fax: 360-676-5014  
Toll Free: 1-800-526-0532



### Mustang Survival CANADA

3810 Jacombs Road  
Richmond, B.C., Canada V6V 1Y6  
Tel: 604-270-8631  
Fax: 604-270-0489

Printed in Canada